



# FACT SHEET



## I-71/SR 665 Interchange

The I-71/State Route 665 (London-Groveport Road) Interchange will be improved and reconstructed in order to handle increasing traffic volumes including trucks transporting goods.

### Quick Facts

**Current Traffic Counts:** 12,500

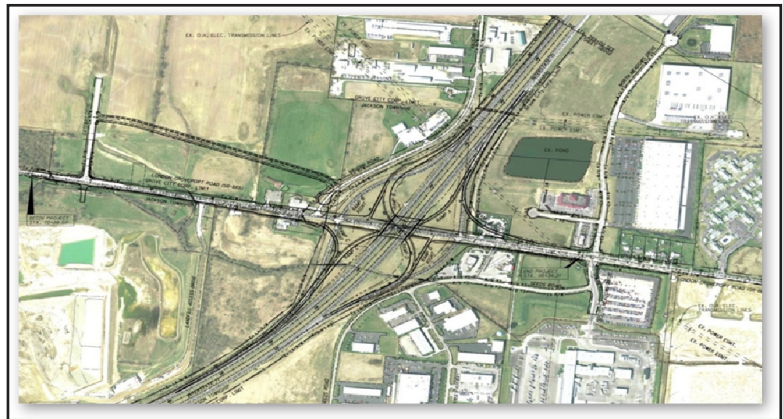
**Projected Traffic Capacity:** 41,600

### Phase 3 Facts

**Construction Start Date:** Nov. 2010

**Completed:** Dec. 2012

**Estimated Cost:** \$22 million



### Frequently Asked Questions

**Q: What will the interchange look like?**

A: The current, diamond configuration will be replaced with a Single Point Urban Interchange (SPUI) similar to the interchange at Sawmill Road and I-270. In order to improve the interchange, SR 665 will be widened from North Meadows Drive to Gateway West Drive.

**Q. Will the bridge ever be closed?**

A: Yes, for two nights from 12 a.m. to 5 a.m. to set beams and SR 665 will be closed to through traffic for 30 days between Gateway West Drive and Old Haughn Road for culvert replacement. Access will be maintained for local businesses and property owners.

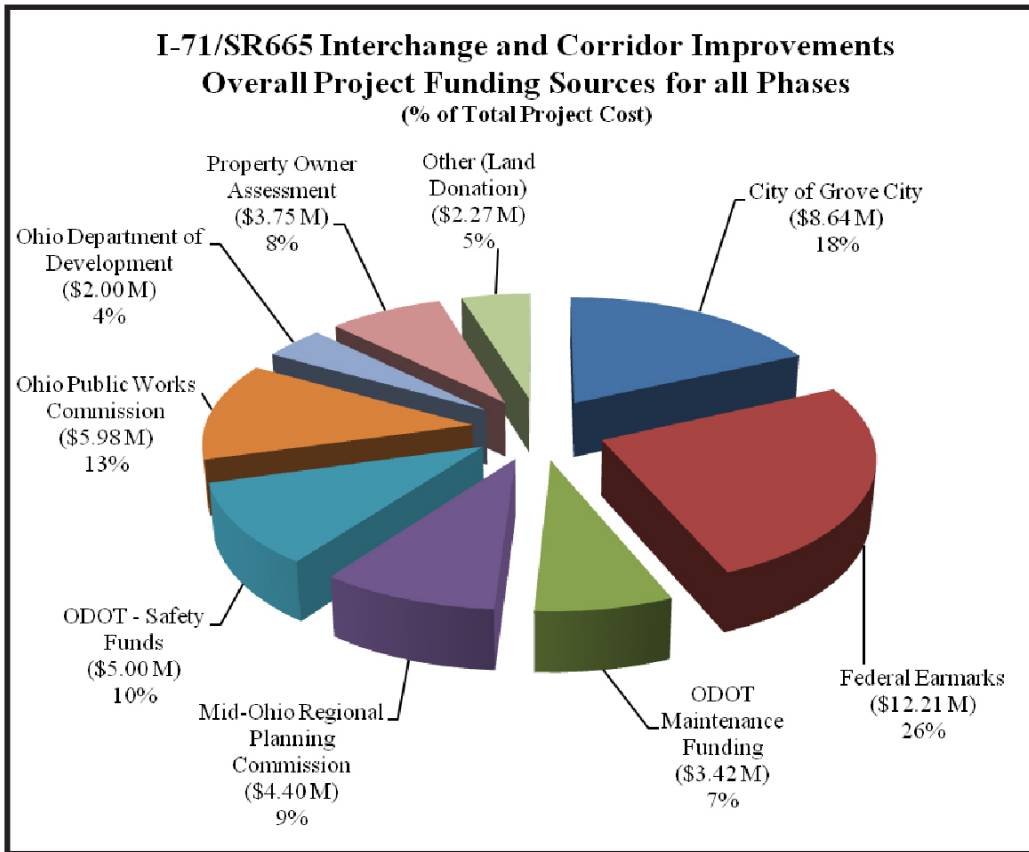
**Q: How will I find out about those lane restrictions or traffic impacts during construction?**

A: Call ODOT at 740-833-8268 or visit: [www.grovecityohio.gov](http://www.grovecityohio.gov). You can also email ODOT at [D06.PIO@dot.state.oh.us](mailto:D06.PIO@dot.state.oh.us) or the City of Grove City at [publicservice@grovecityohio.gov](mailto:publicservice@grovecityohio.gov).

**Q: Will there be sidewalks and bike lanes across the new bridge?**

A: Yes, there will be sidewalks, ADA ramps and a bike path on the south side of the bridge.

# Total Project Funding



The total cost of all three phases is approximately \$47.9 million. The chart above reflects the sources that contributed to the implementation of this overall project.

## Project History

For 10 years, the City of Grove City, ODOT, and many stakeholders have worked together to improve safety and congestion on I-71 and SR 665.



Before Phase 1



After completion of Phase 1

### Phase 1 - SR 665 widening and reconstruction from North Meadows Drive to Hoover Road

- Widened from two to five lanes
- **Constructed:** 2007-2008
- **Project Cost:** \$9.9 million
- **Funding Sources:** City of Grove City, Ohio Public Works Commission (OPWC) and Property Owner Assessment

### Phase 2 - Relocation of Haughn Road

- Relocated 600 feet to connect to Gateway West Drive
- **Constructed:** 2009
- **Project Cost:** \$3.1 million
- **Funding Sources:** City of Grove City Property Owner Assessment