

# OHIO DEPARTMENT OF TRANSPORTATION



District 7 Sidney, Ohio  
Ted Strickland, Governor  
Jolene M. Molitoris, Director  
Rex Dickey, P.E., P.S., District Deputy Director



The update is a general guide to the construction operations on the I-75/SR 4 interchange modernization and the Stanley Ave. project. Any timeframes listed within are subject to change without notice due to changing weather or field conditions. This information will be updated monthly or as needed.

## April 2009

**Interstate 75** - Traffic has been shifted on I-75 southbound to the northbound side just south of the Miami River, approximately 1 mile south of the Main St. exit. I-75 northbound traffic is shifted to the outside shoulder from Riverview to the Miami River Bridge. Traffic is running side by side separated by barrier wall on the existing northbound lanes of travel. Traffic will remain in its current configuration on I-75 until June of 2009. The new Main St. entrance and exit ramps at I-75 are complete and open to traffic. Traffic will access the I-75 southbound ramp to Main St. just north of Leo St.

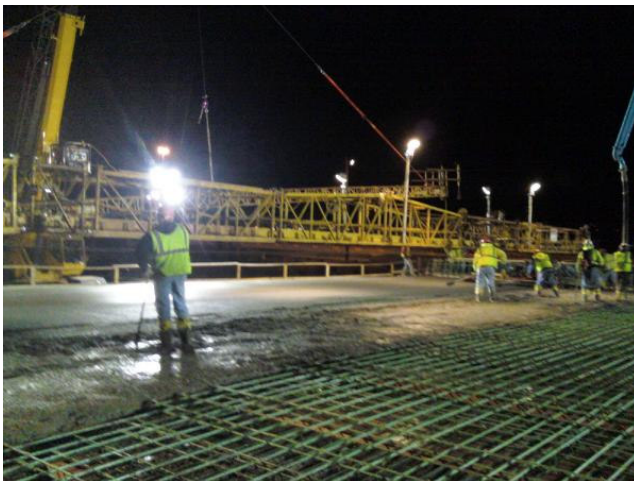
The left "exit only" lane and ramp from I-75 southbound to SR 4 north / Webster Street is closed. The official detour route is I-75 southbound to Stanley Avenue (east) to SR 4. The anticipated opening date is late summer 2009.

**Structures** - Work continues on the I-75 northbound and southbound mainline bridge over the Great Miami River. This bridge, located east of the existing bridge, will eventually carry all through traffic on I-75 over the Great Miami River.

Work continues on the new SR 4 southbound flyover bridge that will carry traffic to I-75 southbound as well as exit to Main St. from SR 4. Work continues on the I-75 southbound bridge over Main St.

The first phase of the full replacement of the Keowee Street Bridge is complete.

Retaining wall construction continues throughout the project at various locations.



The new I-75 southbound over Main St. Bridge



The new flyover bridge from SR 4 southbound to I-75 southbound

## **Ramps**

### **Permanently Closed (Currently)**

I-75 southbound off ramp to Keowee St.  
Grand Avenue to northbound I-75  
I-75 southbound to Grand Avenue  
Grand Avenue to I-75 southbound

### **Permanently Closed (Future)**

Riverside to I-75 northbound

### **Temporary Ramp Closures (Currently)**

SR 4 southbound to I-75 southbound (September 7, 2008 to late summer 2009)  
I-75 southbound exit to Webster Street (September 7, 2008 to late summer 2009)  
I-75 southbound exit to SR 4 northbound (March 4, 2009 to late summer 2009)

## **Estimated Upcoming Milestones**

Re-open southbound SR 4 to I-75: late summer 2009  
Re-open southbound I-75 to Webster Street: late summer 2009  
Re-open southbound I-75 to SR 4 north: late summer 2009  
Current Completion Date: October 2011

The Project is 51% Complete.

## **Stanley Avenue Update – April 2009**

**Interstate 75** – Traffic on I-75 is currently shifted to the median and is reduced to two lanes in each direction. Traffic on I-75 southbound is expected to be shifted to the two outside lanes in mid-April, with northbound traffic shifted to the outside lanes in May.

**Stanley Ave.** – Work is nearing completion on the ramp from I-75 southbound to Stanley Ave. This ramp will open when the outside half of the new I-75 southbound bridge is completed and opened to traffic. Work is expected to begin on the new traffic signal on Stanley Ave. at this ramp, with the existing signal just to the west on Stanley Ave. being removed when the new traffic signal is fully functional. Two lanes of traffic are maintained in each direction on Stanley Ave.

**Structures** – All five spans of the southbound half of the bridge deck have now been poured. After forming the northbound bridge deck and placing the reinforcing steel, the concrete for this deck will be placed in a single pour. This pour will likely take place the first two weeks of this month. When traffic is shifted to the outside portions of the bridge, demolition of the old bridge will begin.

**Ramps** – The following ramps are affected by the project:

- I-75 northbound to Neva Dr. (permanently closed)
- I-75 southbound from Neva Dr. (permanently closed)
- Stanley Ave. to I-75 northbound (temporarily closed – reopens Summer 2009)
  - The following detour is posted: west on Stanley Ave., north on Keowee St., east on Wagner Ford Rd. to I-75.
- Windham St. to I-75 northbound (permanently closed)
- Access between I-75 southbound and Stanley Ave. will be maintained throughout the duration of the project by modifying the existing ramps.
- The ramp from I-75 northbound to Stanley Ave. will not be affected by the project.

### **Upcoming Milestone Dates**

Pour the outside half of the I-75 northbound bridge deck: Spring 2009

Switch I-75 southbound traffic from the inside lanes to new outside lanes: April 2009

Open the new ramp from I-75 southbound to Stanley Ave.: April 2009

Install new traffic signals on Stanley Ave.: Spring 2009

Switch I-75 northbound traffic from the inside lanes to new outside lanes: May 2009

Complete the piers in the center of the bridge: October 2009

---

If you have any questions on this project, please contact: Public Information Officer Denise Heitkamp, [Denise.Heitkamp@dot.state.oh.us](mailto:Denise.Heitkamp@dot.state.oh.us), 937 497-6770 or Public Information Specialist Barbara Elliston, [Barb.Elliston@dot.state.oh.us](mailto:Barb.Elliston@dot.state.oh.us), 937-497-6820. You may pick up a copy of this newsletter at 5994 Poe Avenue (the old state highway patrol post) or visit our website at <http://www.dot.state.oh.us/dist7/Projects/ConstructionUpdates.htm>.

---