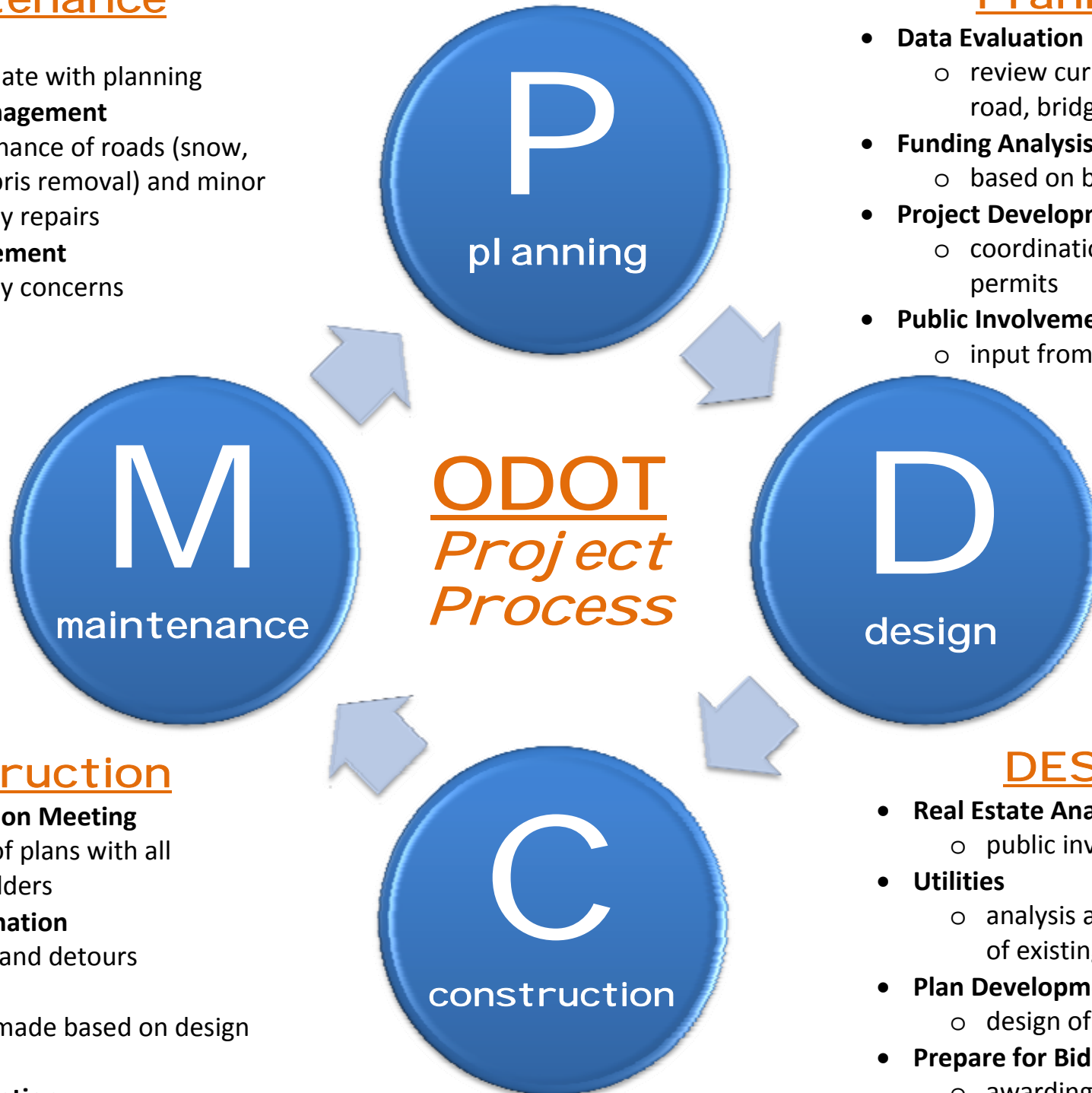


## Maintenance

- **Evaluation**
  - coordinate with planning
- **Highway Management**
  - maintenance of roads (snow, ice, debris removal) and minor roadway repairs
- **Public Involvement**
  - roadway concerns

## Planning

- **Data Evaluation**
  - review current conditions of road, bridge, traffic
- **Funding Analysis**
  - based on budget
- **Project Development**
  - coordination of research and permits
- **Public Involvement**
  - input from public and business



## Construction

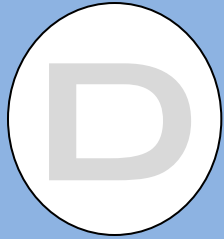
- **Pre-Construction Meeting**
  - review of plans with all stakeholders
- **Traffic Coordination**
  - signage and detours
- **Construction**
  - repairs made based on design plans
- **Project Completion**
  - final evaluation
  - open to travelers

## DESIGN

- **Real Estate Analysis**
  - public involvement
- **Utilities**
  - analysis and coordination of existing and new utilities
- **Plan Development**
  - design of project plans
- **Prepare for Bid**
  - awarding of contract



PLANNING



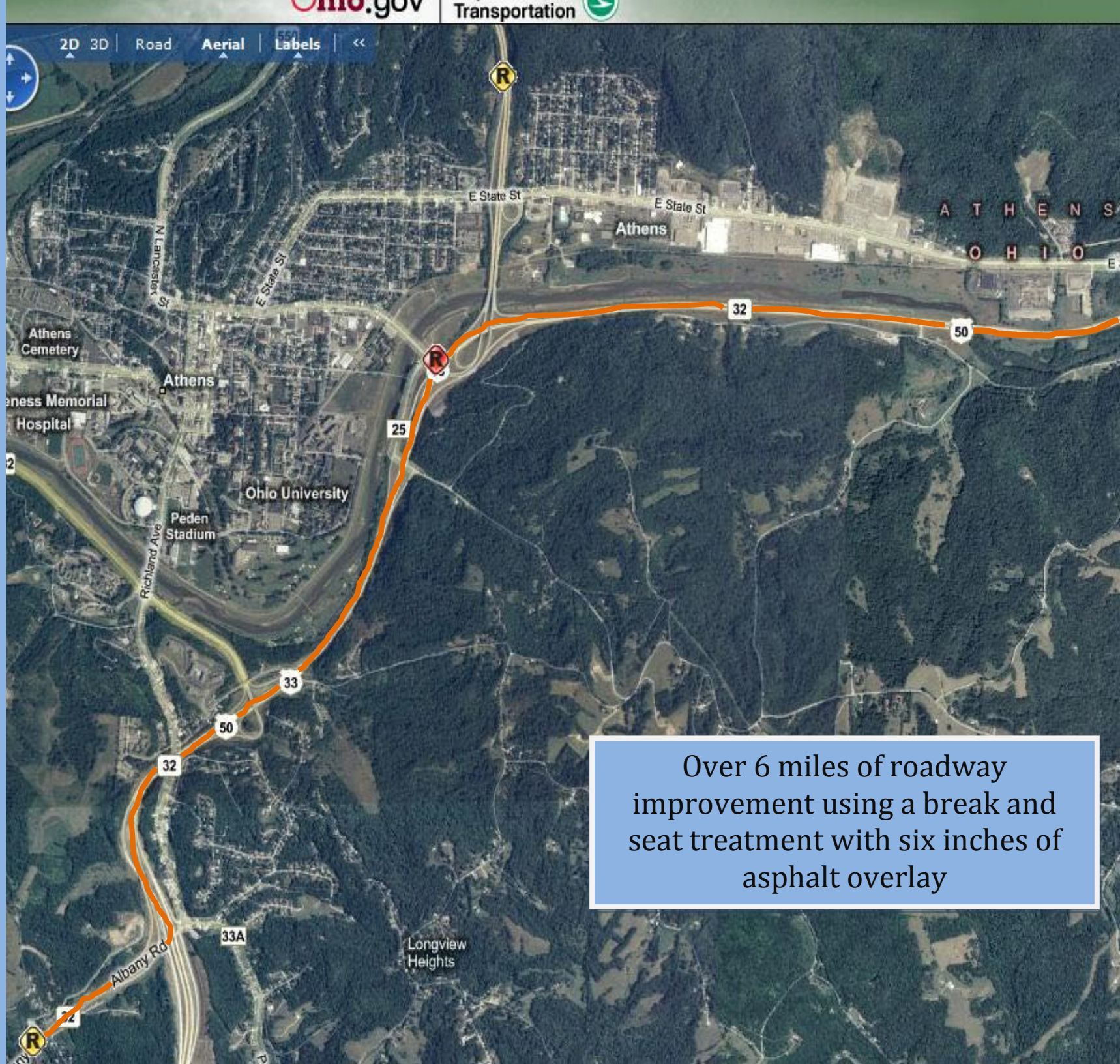
DESIGN



CONSTRUCTION



MAINTENANCE



Over 6 miles of roadway improvement using a break and seat treatment with six inches of asphalt overlay