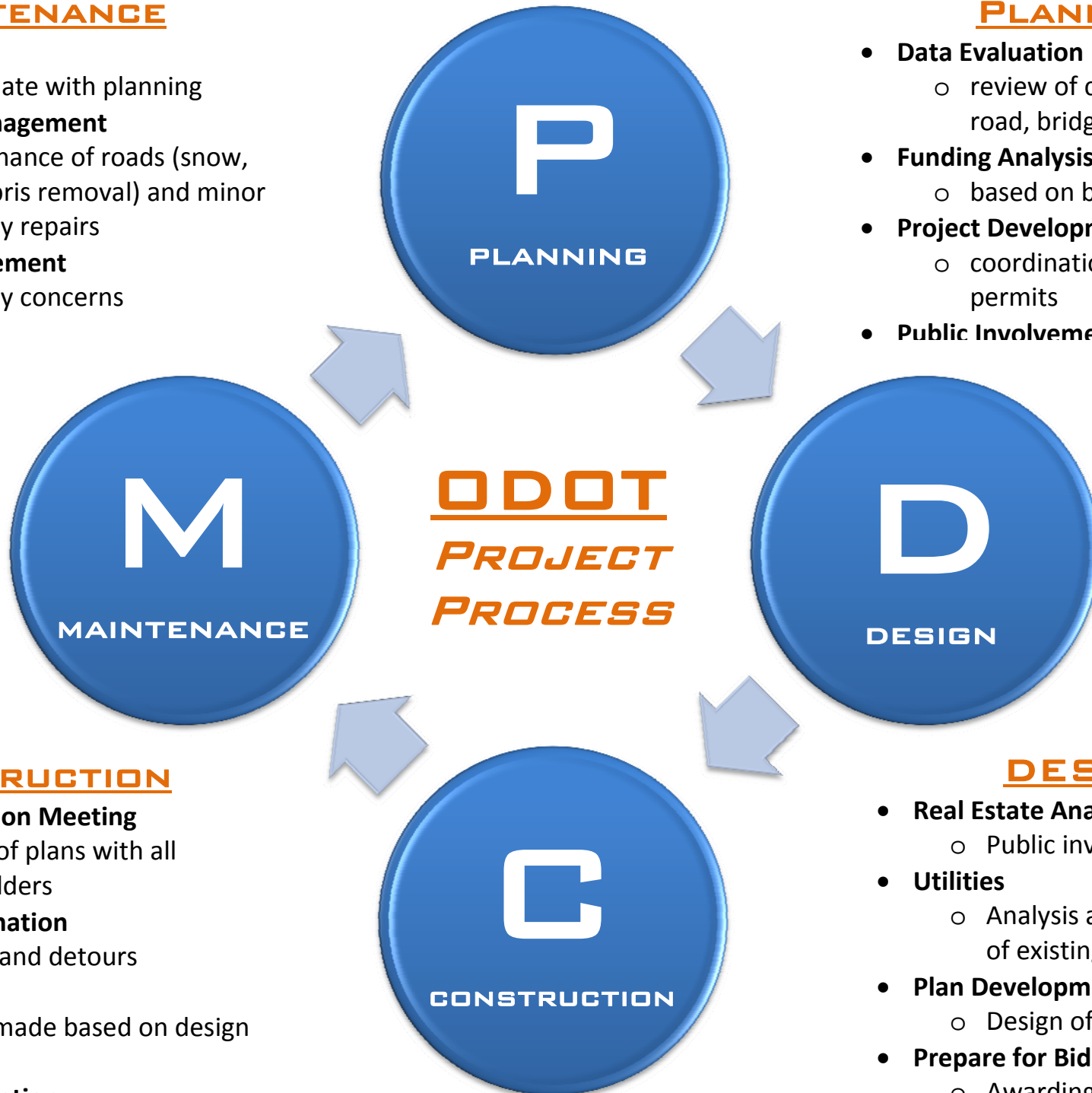


## MAINTENANCE

- **Evaluation**
  - coordinate with planning
- **Highway Management**
  - maintenance of roads (snow, ice, debris removal) and minor roadway repairs
- **Public Involvement**
  - roadway concerns

## PLANNING

- **Data Evaluation**
  - review of current conditions of road, bridge, traffic
- **Funding Analysis**
  - based on budget
- **Project Development**
  - coordination of research and permits
- **Public Involvement**



## DESIGN

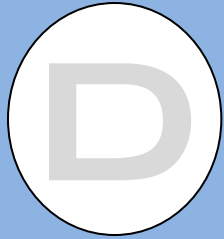
- **Real Estate Analysis**
  - Public involvement
- **Utilities**
  - Analysis and coordination of existing and new utilities
- **Plan Development**
  - Design of project plans
- **Prepare for Bid**
  - Awarding of contract

## CONSTRUCTION

- **Pre-Construction Meeting**
  - Review of plans with all stakeholders
- **Traffic Coordination**
  - signage and detours
- **Construction**
  - repairs made based on design plans
- **Project Completion**
  - final evaluation
  - open to travelers



PLANNING



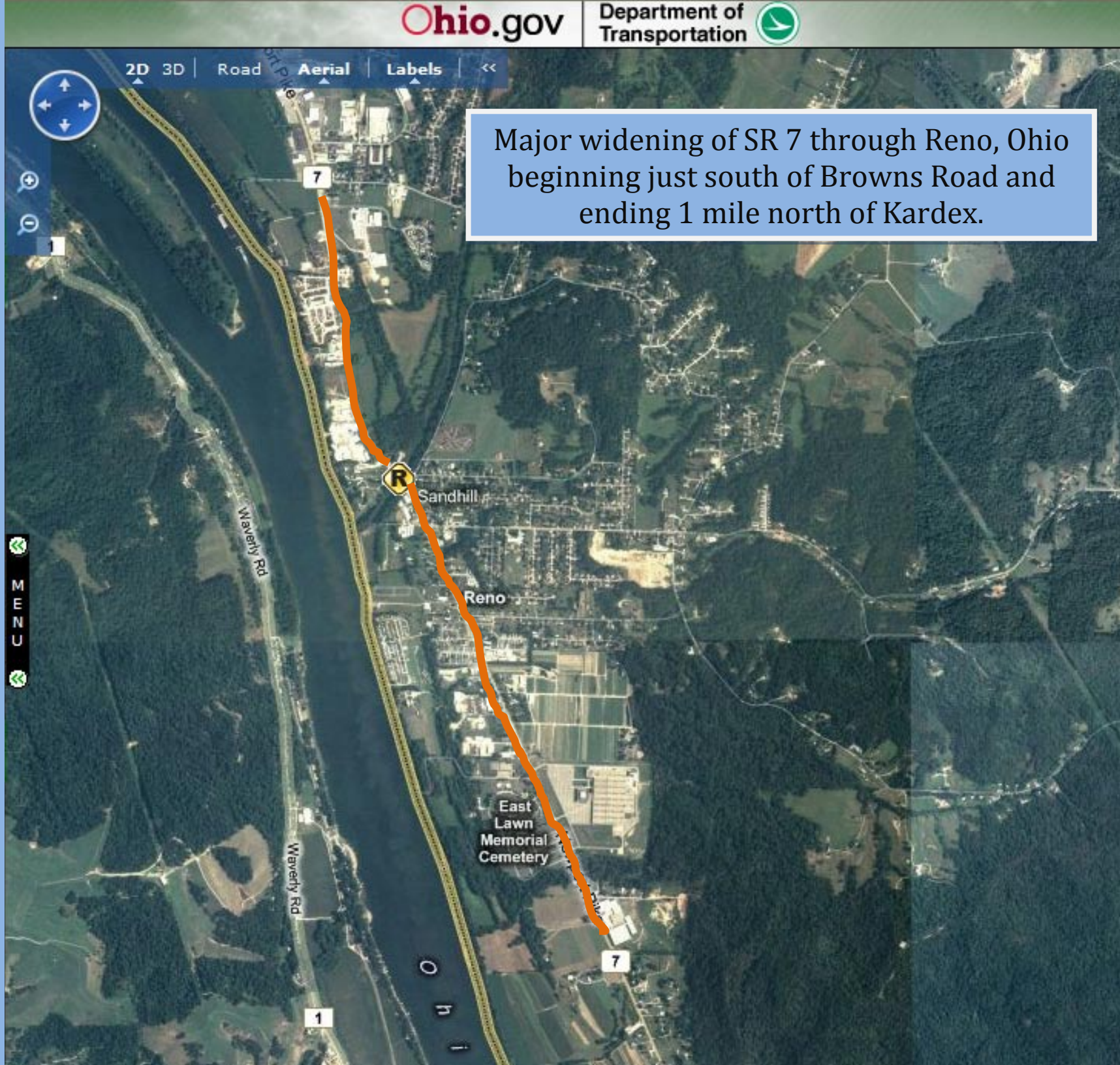
DESIGN



CONSTRUCTION



MAINTENANCE



Major widening of SR 7 through Reno, Ohio beginning just south of Browns Road and ending 1 mile north of Kardex.

2D 3D | Road Aerial | Labels | <<



M  
E  
N  
U

7



Sandhill

Reno

East Lawn Memorial Cemetery

Waverly Rd

Waverly Rd

1

7

O  
h  
i