

**ODOT District 11
No Passing Zone Log (BEL)**

Route: **0250R (SBELUS00250**C)**

From: **0.000 LEAVE JEF CO**

Length: **9.536** Direction: **East**

To: **9.536 U0040R - BEGIN OVERLAP**

Length	Left	C/L	Right	Length	Control Points	Scale: 1.00 mile/page
	1.000		0.993	0.987	T0771 / T1469	
				0.943	C0012 MERCER RT	
				0.742	C0005 CRESCENT PLEASANT GROVE RT	
				0.705	T0770 HARPER LT	
0.625				0.685	C0005 EMERSON LT	
				0.732		
				0.534	T0452 HOLLYVIEW RT	
	0.375		0.261			
	0.181		0.067			
0.181				0.067		
	0.000		0.000	0.011		
				0.000	LEAVE JEF CO	

↑ 40mph

**ODOT District 11
No Passing Zone Log (BEL)**

Route: **0250R (SBELUS00250**C)**

From: **0.000 LEAVE JEF CO**

Length: **9.536** Direction: **East**

To: **9.536 U0040R - BEGIN OVERLAP**

Length	Left	C/L	Right	Length	Control Points	Scale: 1.00 mile/page
			2.000	0.028		
	1.962		1.972		1.960	Mile Post = 002
			1.848		1.848	T1481 LT
0.668					1.677	T1574 SUNNY LANE LT
				0.668		
					1.450	T0474A MAJOR LT
					1.405	T1559 RT
					1.390	T0583 WORTHINGTON RT
	1.294					
					1.251	T1470 BROWNFIELD RT
			1.180			
	1.107					
0.107						
	1.000				1.001	Mile Post = 001

Sheet total equivalent length of solid line: 1.583

Accum. total: 3.267

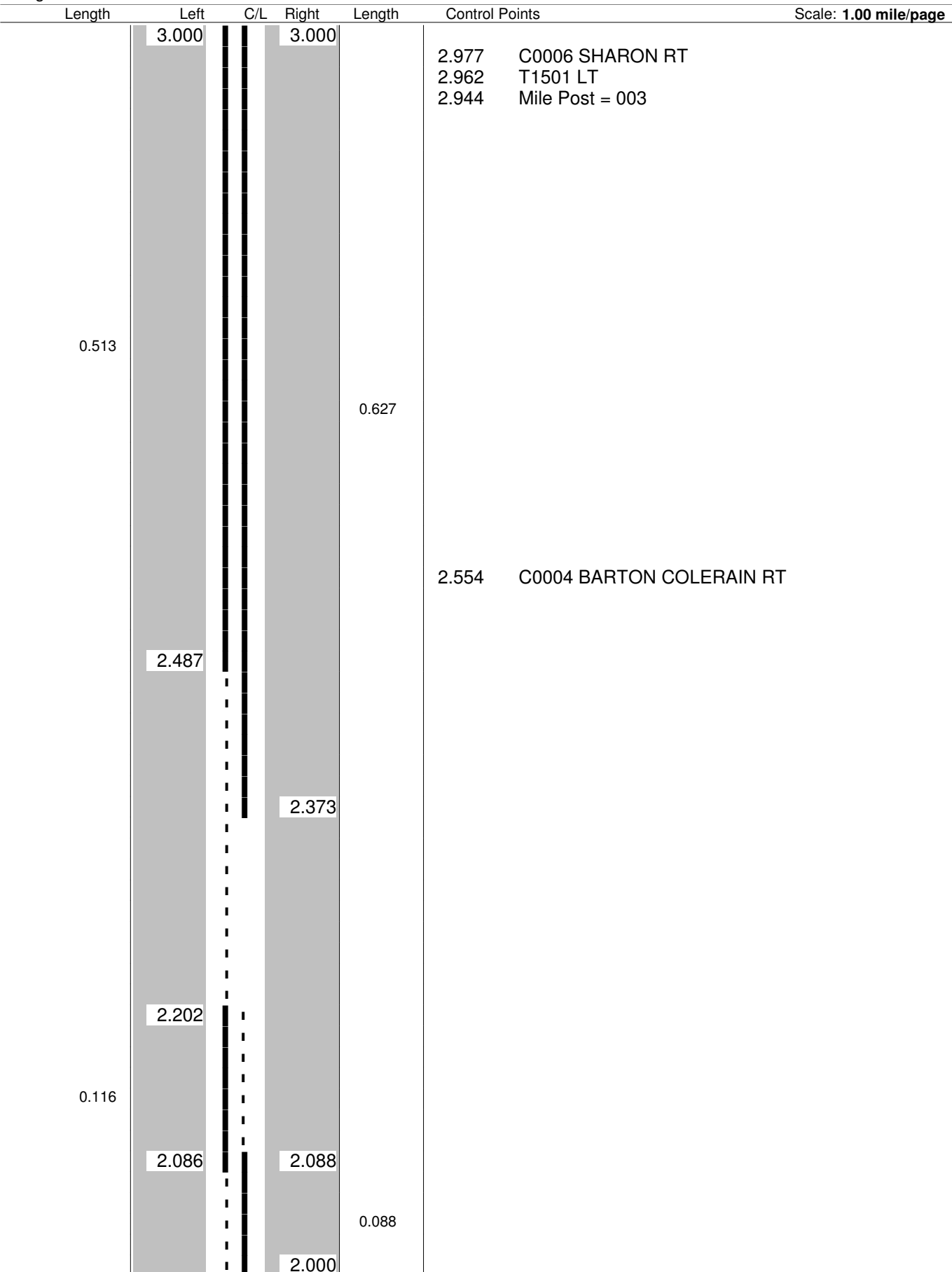
**ODOT District 11
No Passing Zone Log (BEL)**

Route: **0250R (SBELUS00250**C)**

From: **0.000 LEAVE JEF CO**

Length: **9.536** Direction: **East**

To: **9.536 U0040R - BEGIN OVERLAP**



Sheet total equivalent length of solid line: 1.465

Accum. total: 4.732

**ODOT District 11
No Passing Zone Log (BEL)**

Route: **0250R (SBELUS00250**C)**

From: **0.000 LEAVE JEF CO**

Length: **9.536** Direction: **East**

To: **9.536 U0040R - BEGIN OVERLAP**

Length	Left	C/L	Right	Length	Control Points	Scale: 1.00 mile/page
	4.000		4.000			
					3.957 T0098 BRACKIN LT	
					3.936 Mile Post = 004	
1.000				1.000		
					3.461 C0004 COLERAIN MARTINS FERRY LT	
					3.389 T0475 MT PLEASANT LT	
					3.298 T0709 RT	
					3.179 T0709 RT	
	3.000		3.000			

**ODOT District 11
No Passing Zone Log (BEL)**

Route: **0250R (SBELUS00250**C)**

From: **0.000 LEAVE JEF CO**

Length: **9.536** Direction: **East**

To: **9.536 U0040R - BEGIN OVERLAP**

Length	Left	C/L	Right	Length	Control Points	Scale: 1.00 mile/page
	5.000		5.000		4.976 Mile Post = 005	
1.000				1.000	4.526 C0018 LANCING CEERMONT RT 4.484 T0708 RT	
	4.000		4.000		4.243 C0014 FARMINGTON RT	

Sheet total equivalent length of solid line: 2.000

Accum. total: 8.732

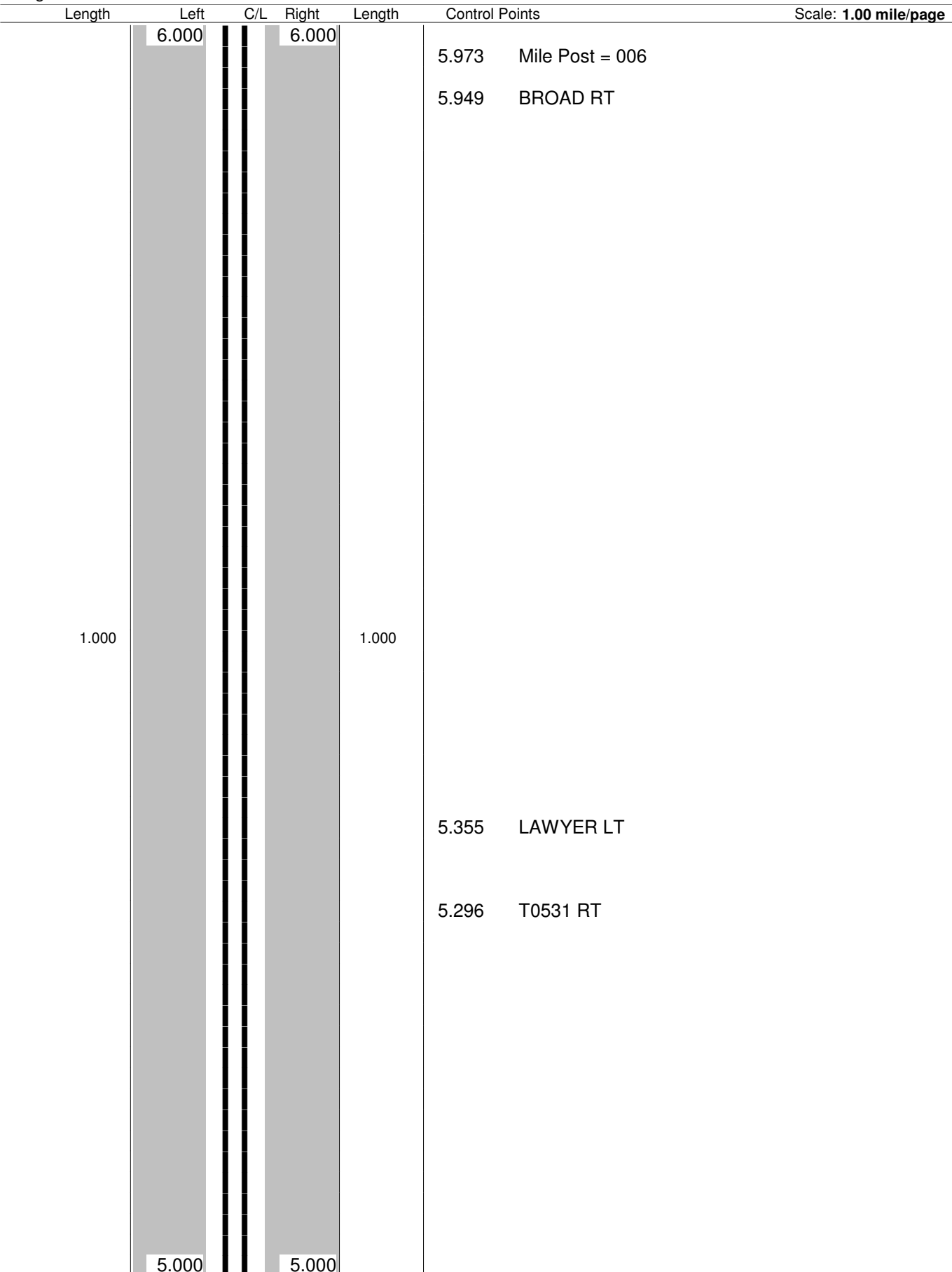
**ODOT District 11
No Passing Zone Log (BEL)**

Route: **0250R (SBELUS00250**C)**

From: **0.000 LEAVE JEF CO**

Length: **9.536** Direction: **East**

To: **9.536 U0040R - BEGIN OVERLAP**



**ODOT District 11
No Passing Zone Log (BEL)**

Route: **0250R (SBELUS00250**C)**

From: **0.000 LEAVE JEF CO**

Length: **9.536** Direction: **East**

To: **9.536 U0040R - BEGIN OVERLAP**

Length	Left	C/L	Right	Length	Control Points	Scale: 1.00 mile/page
	7.000		7.000		6.970 Mile Post = 007	
					6.695 T0550 RT	
					6.613 T0458 LT	
1.000				1.000		
					6.227 T0457 WOODS RT	
					6.033 T0543 HOMELAND LT	
	6.000		6.000			

**ODOT District 11
No Passing Zone Log (BEL)**

Route: **0250R (SBELUS00250**C)**

Length: **9.536**

Direction: **East**

From: **0.000 LEAVE JEF CO**

To: **9.536 U0040R - BEGIN OVERLAP**

Length	Left	C/L	Right	Length	Control Points	Scale: 1.00 mile/page
	8.000		8.000			
					7.952 Mile Post = 008	
					7.926 T0720 BEESON RT	
					7.700 HIGHLAND LT	
					7.548 T0580 UPLAND LT	
					7.532 T0478 STARLIGHT RT	
1.000				1.000		
					7.321 C0022 FERRYVIEW LT	
					7.212 OLD CADIZ RT	
	7.000		7.000			

**ODOT District 11
No Passing Zone Log (BEL)**

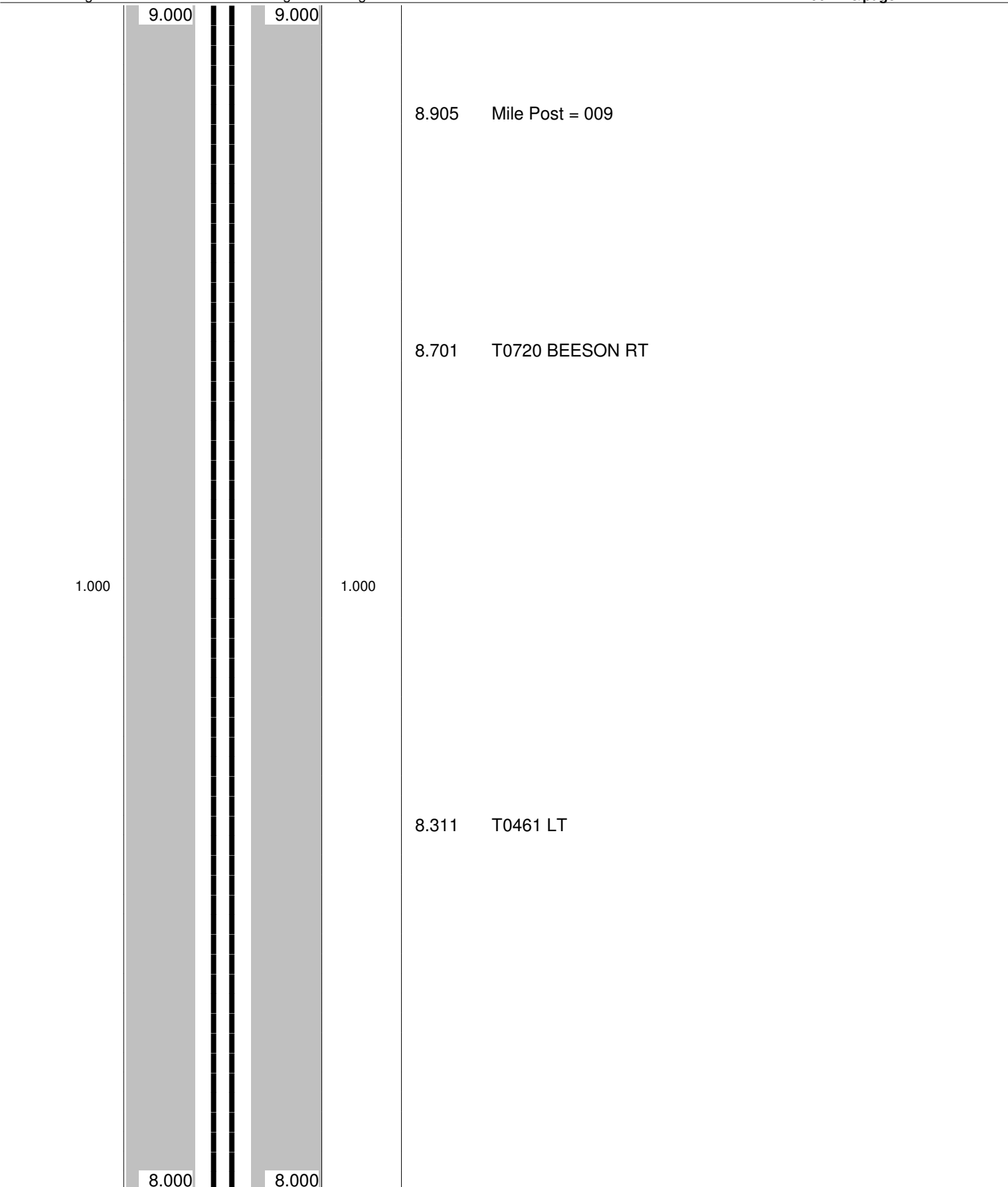
Route: **0250R (SBELUS00250**C)**

From: **0.000 LEAVE JEF CO**

Length: **9.536** Direction: **East**

To: **9.536 U0040R - BEGIN OVERLAP**

Length Left C/L Right Length Control Points Scale: **1.00 mile/page**



Sheet total equivalent length of solid line: 2.000

Accum. total: 16.732

**ODOT District 11
No Passing Zone Log (BEL)**

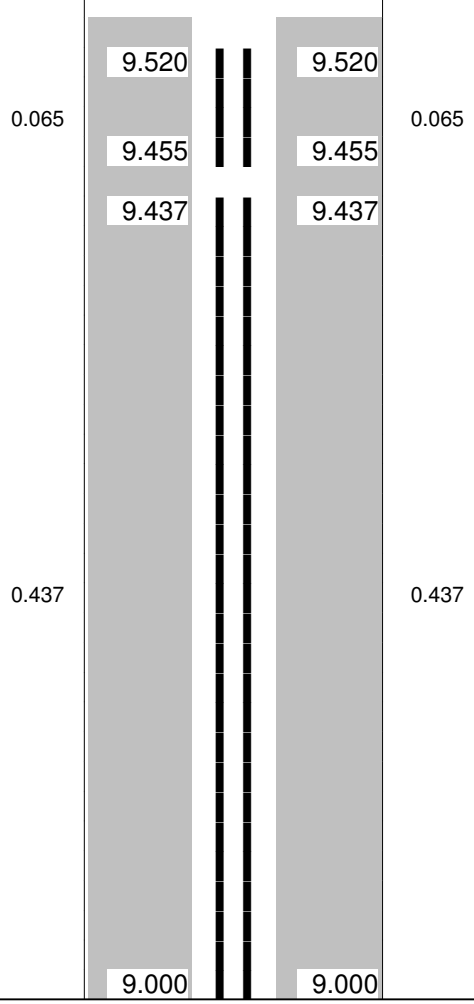
Route: **0250R (SBELUS00250**C)**

From: **0.000 LEAVE JEF CO**

Length: **9.536** Direction: **East**

To: **9.536 U0040R - BEGIN OVERLAP**

Length Left C/L Right Length Control Points Scale: **1.00 mile/page**



9.536 U0040R - BEGIN OVERLAP

9.455 S0007R RAMP LT
9.446 LINCOLN

9.074
9.059 ENTER BRIDGEPORT

↑ 25mph