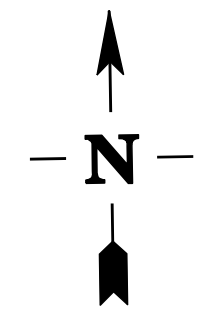
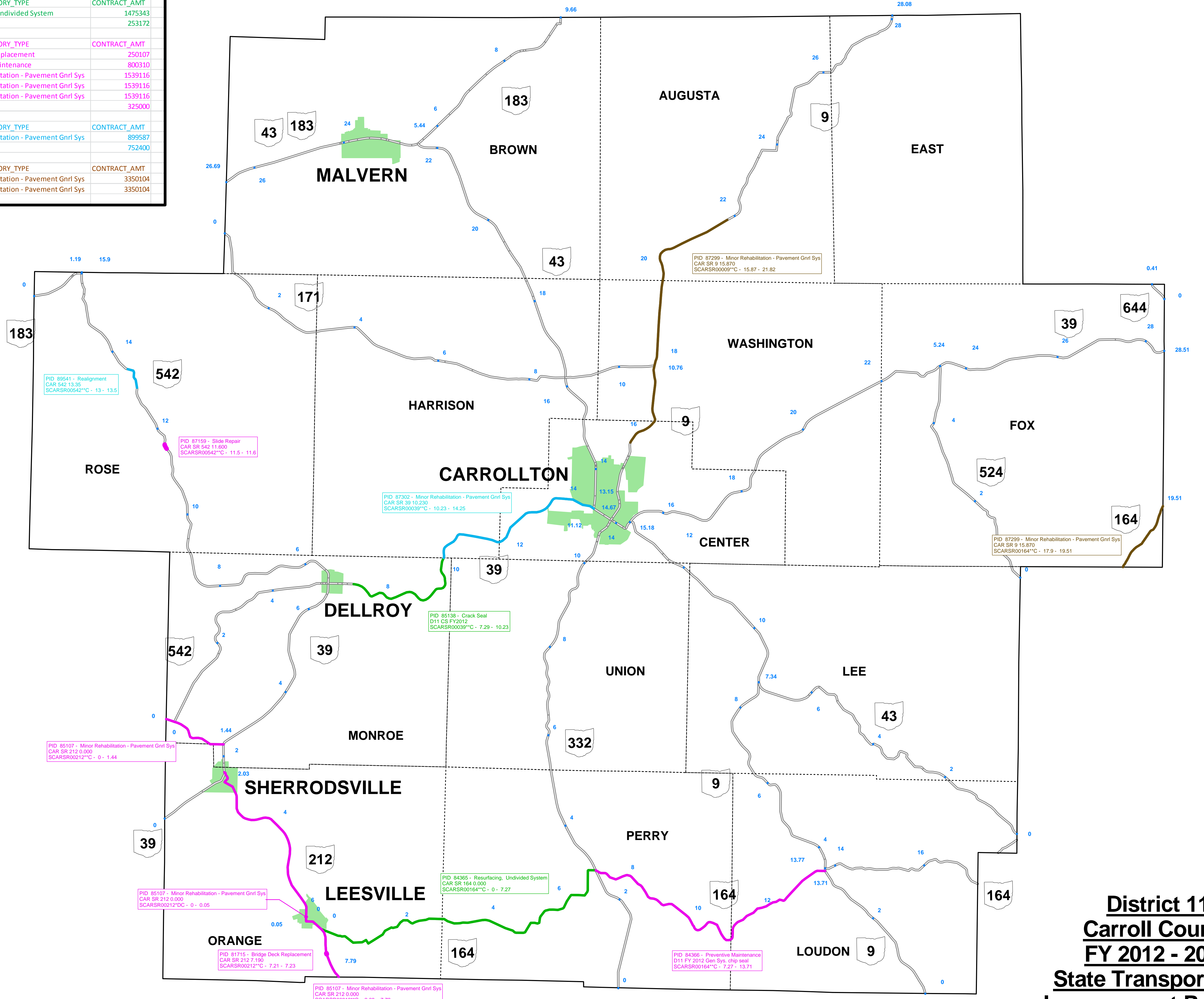


PID_NBR	PROJECT_NAME	NLF_ID	LOGPOINT_COUNTY_BEGIN	WORK_CATEGORY_TYPE	CONTRACT_AMT
84365	CAR SR 164 0.000	SCARSR00164**C		0 Resurfacing, Undivided System	1475343
85138	D11 CS FY2012	SCARSR00039**C	7.29	Crack Seal	253172
PID_NBR	PROJECT_NAME	NLF_ID	LOGPOINT_COUNTY_BEGIN	WORK_CATEGORY_TYPE	CONTRACT_AMT
81715	CAR SR 212 7.190	SCARSR00212**C	7.21	Bridge Deck Replacement	250107
84366	D11 FY 2012 Gen Sys. chip seal	SCARSR00164**C	7.27	Preventive Maintenance	800310
85107	CAR SR 212 0.000	SCARSR00212**C	2.03	Minor Rehabilitation - Pavement Grnl Sys	1539116
85107	CAR SR 212 0.000	SCARSR00212**C	0	Minor Rehabilitation - Pavement Grnl Sys	1539116
85107	CAR SR 212 0.000	SCARSR00212**DC	0	Minor Rehabilitation - Pavement Grnl Sys	1539116
87159	CAR SR 542 11.600	SCARSR00542**C	11.5	Slide Repair	325000
PID_NBR	PROJECT_NAME	NLF_ID	LOGPOINT_COUNTY_BEGIN	WORK_CATEGORY_TYPE	CONTRACT_AMT
87302	CAR SR 39 10.230	SCARSR00039**C	10.23	Minor Rehabilitation - Pavement Grnl Sys	899587
89541	CAR 542 13.35	SCARSR00542**C	13	Realignment	752400
PID_NBR	PROJECT_NAME	NLF_ID	LOGPOINT_COUNTY_BEGIN	WORK_CATEGORY_TYPE	CONTRACT_AMT
87299	CAR SR 9 15.870	SCARSR00009**C	15.87	Minor Rehabilitation - Pavement Grnl Sys	3350104
87299	CAR SR 9 15.870	SCARSR00164**C	17.9	Minor Rehabilitation - Pavement Grnl Sys	3350104



Legend

- 2012 Projects
- 2013 Projects
- 2014 Projects
- 2015 Projects

District 11
Carroll County
FY 2012 - 2015
State Transportation
Improvement Program

District 11 Columbiana County FY 2012 - 2015 State Transportation Improvement Program

PID_NBR	PROJECT_NAME	NLF_ID	LOGPOINT_COUNTY_BEGIN	WORK_CATEGORY_TYPE	CONTRACT_AMT
84005	COL SR 7.0.580	SCOLSR0007**C		0.58 Bridge Repair	1279005
84009	COL SR 13.11.410	SCOLSR0007**C		11.41 Bridge Deck Replacement	2437276
84016	COL SR 46.0.000	SCOLSR0017**C		14.27 Minor Rehabilitation - Pavement Grnt Sys	433661
84016	COL SR 46.0.000	SCOLSR0004**C		0 Minor Rehabilitation - Pavement Grnt Sys	433661
84236	COL SR 344.8.190	SCOLSR0034**C		8.19 Bridge Deck Replacement	3361224
84325	COL SR 62.10.830	SCOLSR0006**C		10.83 Signal Maintenance/Repair (NEW)	774525.27
84325	COL SR 62.10.830	SCOLSR0002**C		11.24 Signal Maintenance/Repair (NEW)	774525.27
84367	D11 FY 2012 gen sys Prev Maint	SCOLSR0017**C		1.76 Preventive Maintenance	1371960
84367	D11 FY 2012 gen sys Prev Maint	SCOLSR0005**C		19.63 Preventive Maintenance	1371960
84385	COL SR 172.8.970	SCOLSR0017**C		8.97 Resurfacing - Undivided System	1459108
86836	COL SR 30.18.320	SCOLSR0003**C		18.32 Signals	350000
87269	COL SR 267.0.000	SCOLSR0002**C		0 Mill and Fill	389780
88474	D11 GR F2012	SCOLSR0003**C		1.04 Guardrail Maintenance/Repair (NEW)	800000
89328	COL Brookdale Avenue	CCOLCR0044**C		0.34 Mill and Fill	354001
89333	COL St Clair/McKinnon/Maine/Ai	CCOLCR0042**C		0 Mill and Fill	1372105
89333	COL St Clair/McKinnon/Maine/Ai	CCOLCR0051**C		0.59 Mill and Fill	1372105
89333	COL St Clair/McKinnon/Maine/Ai	CCOLCR0055**C		1.37 Mill and Fill	1372105
89333	COL St Clair/McKinnon/Maine/Ai	CCOLCR0051**C		1.31 Mill and Fill	1372105

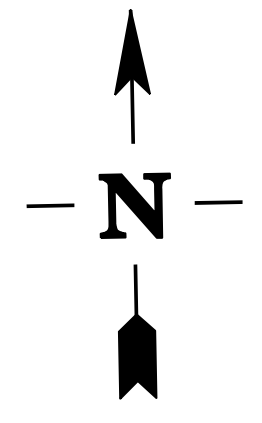
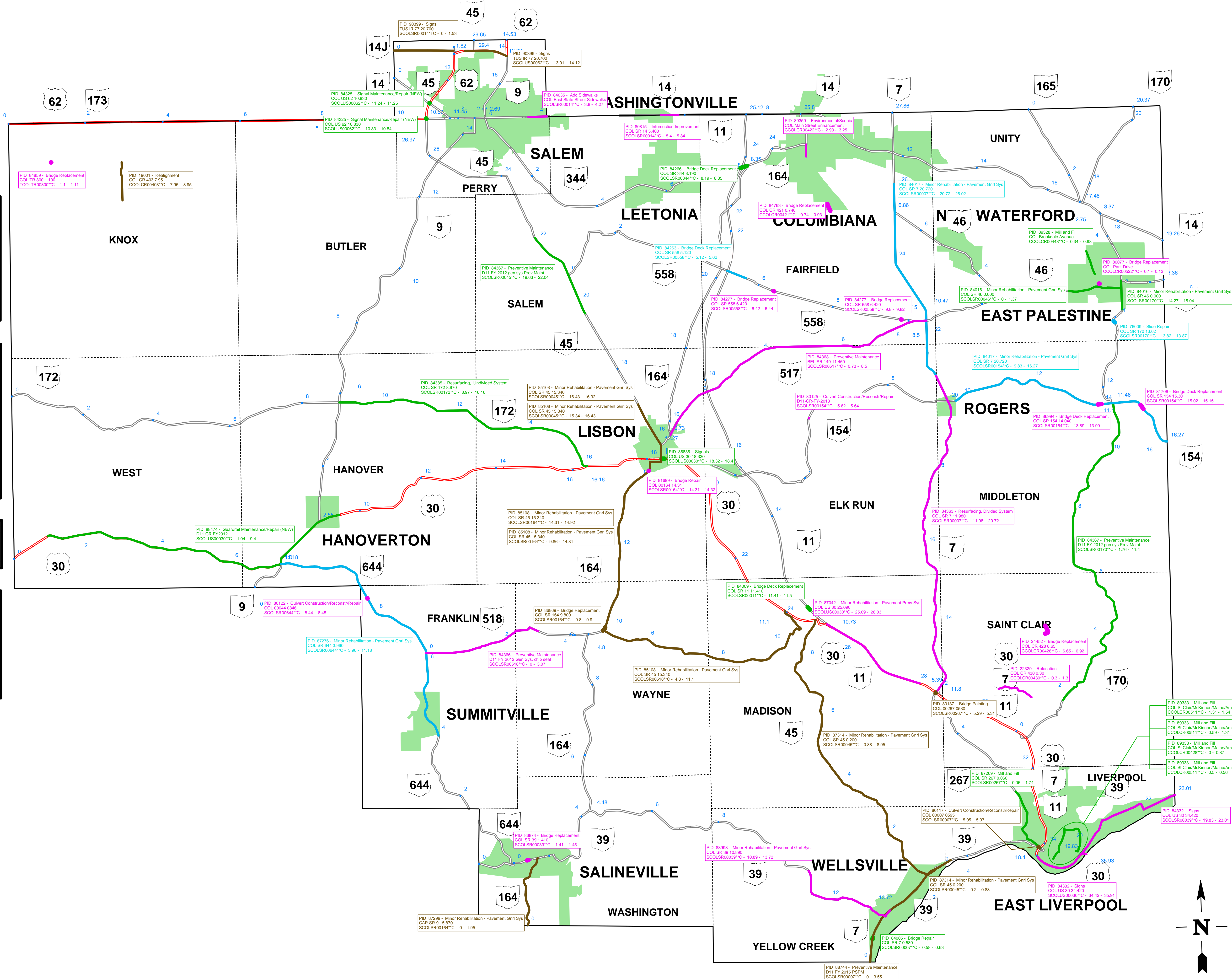
PID_NBR	PROJECT_NAME	NLF_ID	LOGPOINT_COUNTY_BEGIN	WORK_CATEGORY_TYPE	CONTRACT_AMT
22329	COL CR 430.0.30	CCOLCR0043**C		0.3 Relocation	3822000
24452	COL CR 428.6.65	CCOLCR0042**C		6.65 Bridge Replacement	2888000
80122	COL 0844.0845	SCOLSR0064**C		8.44 Culvert Construction/Reconstr/Repair	321567
80125	D11 CR FY 2013	SCOLSR0015**C		5.02 Culvert Construction/Reconstr/Repair	500000
80815	COL SR 14.5.400	SCOLSR0001**C		5.4 Intersection Improvement	1238000
81699	COL 00164.14.31	SCOLSR0016**C		14.31 Bridge Repair	1411321
81706	COL SR 154.15.30	SCOLSR0015**C		15.02 Bridge Deck Replacement	760397
84277	COL SR 558.6.420	SCOLSR0058**C		10.89 Minor Rehabilitation - Pavement Grnt Sys	6020269
84277	COL SR 558.6.420	SCOLSR0005**C		3.8 Add Sidewalks	197767
84277	COL SR 558.6.420	SCOLSR0058**C		9.8 Bridge Replacement	374331
84332	COL SR 30.34.420	SCOLSR0003**C		6.42 Bridge Replacement	374331
84332	COL SR 30.34.420	SCOLSR0003**C		34.42 Signs	670473.49
84332	COL SR 30.34.420	SCOLSR0003**C		19.83 Signs	670473.49
84363	COL SR 7.1.980	SCOLSR0007**C		11.98 Resurfacing, Divided System	1861009
84366	D11 FY 2012 Gen Sys, chip seal	SCOLSR0051**C		0 Preventive Maintenance	8021010
84368	REL SR 149.11.460	SCOLSR0051**C		0.73 Preventive Maintenance	1262029
84763	COL CR 421.0.740	CCOLCR0042**C		0.74 Bridge Replacement	1029253
84859	COL TR 800.1.100	TCOLTR0080**C		1.1 Bridge Replacement	574000
86077	COL Park Drive	CCOLCR0052**C		0.12 Bridge Replacement	295266
86874	COL SR 39.1.410	SCOLSR0003**C		1.41 Bridge Replacement	815827
86994	COL SR 154.14.040	SCOLSR0015**C		13.89 Bridge Deck Replacement	1441096
87042	COL SR 30.25.090	SCOLSR0003**C		25.09 Minor Rehabilitation - Pavement Prmy Sys	2360690
89259	COL Main Street Enhancement	CCOLCR0042**C		2.93 Environmental/Scenic	1342000

PID_NBR	PROJECT_NAME	NLF_ID	LOGPOINT_COUNTY_BEGIN	WORK_CATEGORY_TYPE	CONTRACT_AMT
76009	COL SR 170.13.62	SCOLSR0017**C		13.62 Slide Repair	1460504
84017	COL SR 7.20.720	SCOLSR0015**C		9.83 Minor Rehabilitation - Pavement Grnt Sys	2629389
84017	COL SR 7.20.720	SCOLSR0007**C		20.72 Minor Rehabilitation - Pavement Grnt Sys	2629389
84263	COL SR 158.5.120	SCOLSR0058**C		5.12 Bridge Deck Replacement	173226
87767	COL SR 644.3.900	SCOLSR0064**C		3.96 Minor Rehabilitation - Pavement Grnt Sys	1620151

PID_NBR	PROJECT_NAME	NLF_ID	LOGPOINT_COUNTY_BEGIN	WORK_CATEGORY_TYPE	CONTRACT_AMT
19001	COL CR 403.7.95	CCOLCR0043**C		7.95 Realignment	4103000
80117	COL 00007.0595	SCOLSR0007**C		5.95 Culvert Construction/Reconstr/Repair	805000
80127	COL 00007.0595	SCOLSR0028**C		5.29 Bridge Painting	1644273
85108	COL SR 45.15.340	SCOLSR0016**C		14.31 Minor Rehabilitation - Pavement Grnt Sys	3039995
85108	COL SR 45.15.340	SCOLSR0051**C		4.8 Minor Rehabilitation - Pavement Grnt Sys	3039995
85108	COL SR 45.15.340	SCOLSR0005**C		16.43 Minor Rehabilitation - Pavement Grnt Sys	3039995
85108	COL SR 45.15.340	SCOLSR0045**C		15.34 Minor Rehabilitation - Pavement Grnt Sys	3039995
85108	COL SR 45.15.340	SCOLSR0016**C		9.86 Minor Rehabilitation - Pavement Grnt Sys	3039995
88689	COL SR 164.9.800	SCOLSR0016**C		9.8 Bridge Replacement	262550
87299	CAR SR 915.870	SCOLSR0016**C		0 Minor Rehabilitation - Pavement Grnt Sys	3350104
87334	COL SR 45.0.200	SCOLSR0005**C		0.88 Minor Rehabilitation - Pavement Grnt Sys	2055638
87334	COL SR 45.0.200	SCOLSR0045**C		0.2 Minor Rehabilitation - Pavement Grnt Sys	2055638
88744	D11 FY 2015 PSPM	SCOLSR0007**C		0 Preventive Maintenance	4235360
90399	TUS IR 77.20.700	SCOLSR0001**C		0 Signs	882000
90399	TUS IR 77.20.700	SCOLSR0006**C		13.01 Signs	882000

Legend

- 2012 Projects
- 2013 Projects
- 2014 Projects
- 2015 Projects

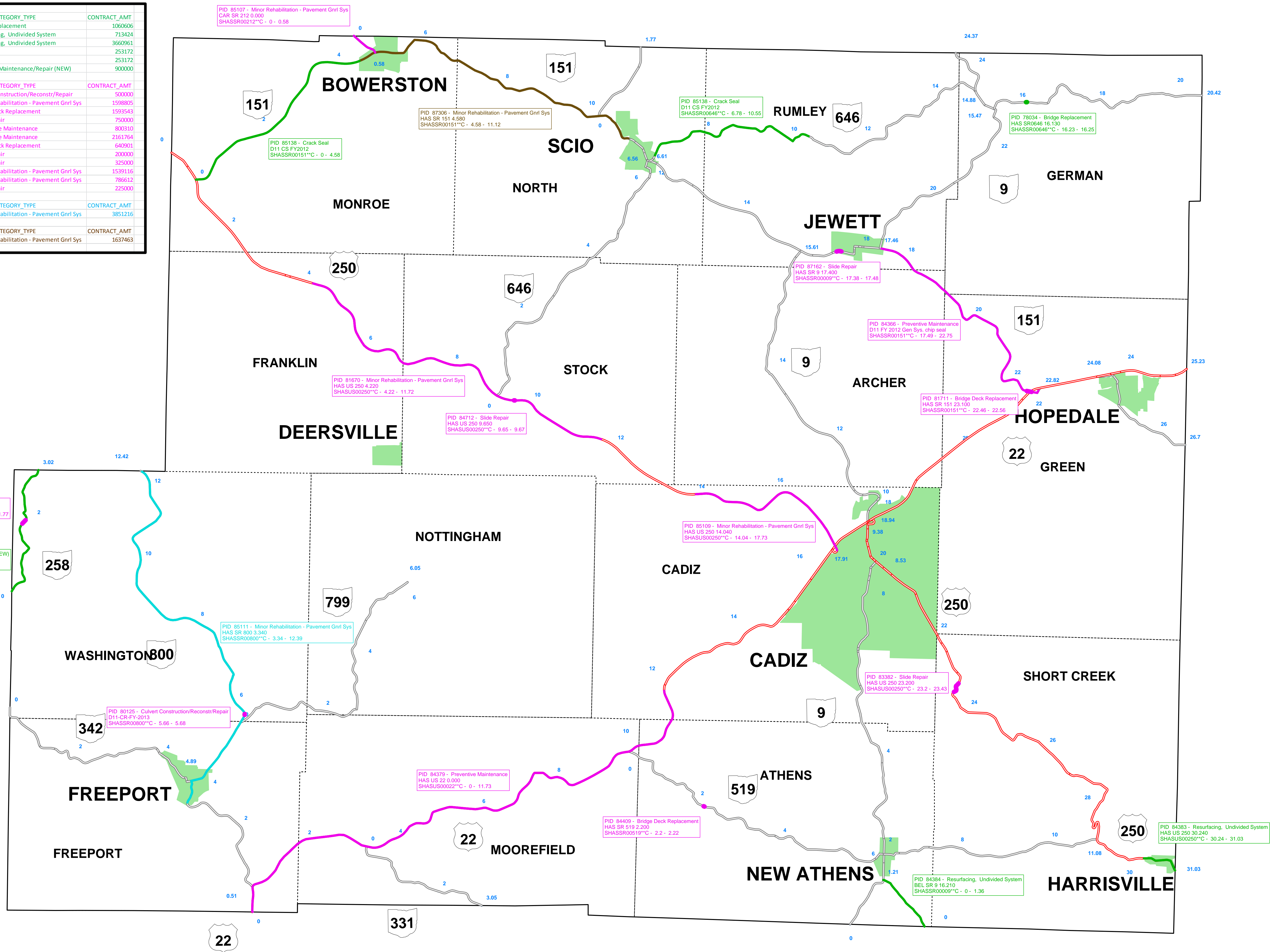


PID_NBR	PROJECT_NAME	NLF_ID	LOGPOINT	COUNTY_BEGIN	WORK_CATEGORY	TYPE	CONTRACT_AMT
78034	HAS SR0646 16.130	SHASSR00646**C	16.23	Bridge Replacement		1066066	
84383	HAS US 250 30.240	SHASSR00250**C	30.24	Resurfacing, Undivided System		713424	
84384	BEL SR 9 16.210	SHASSR00009**C	0	Resurfacing, Undivided System		3660961	
85138	D11 CS FY2012	SHASSR00646**C	6.78	Crack Seal		253172	
85138	D11 CS FY2012	SHASSR00151**C	0	Crack Seal		253172	
88474	D11 GR FY2012	SHASSR00258**C	0	Guardrail Maintenance/Repair (NEW)		900000	

PID_NBR	PROJECT_NAME	NLF_ID	LOGPOINT	COUNTY_BEGIN	WORK_CATEGORY	TYPE	CONTRACT_AMT
80125	D11-CR-FY-2013	SHASSR00800**C	5.66	Culvert Construction/Reconstr/Repair		500000	
81670	HAS US 250 4.220	SHASSR00250**C	4.22	Minor Rehabilitation - Pavement Gnrl Sys		1598805	
81711	HAS SR 151 23.100	SHASSR00151**C	22.46	Bridge Deck Replacement		1593543	
83382	HAS US 250 23.200	SHASSR00250**C	23.2	Slide Repair		750000	
84366	D11 FY 2012 Gen Sys. chip seal	SHASSR00151**C	17.49	Preventive Maintenance		800310	
84379	HAS US 22 0.000	SHASSR00022**C	0	Preventive Maintenance		2161764	
84409	HAS SR 519 2.200	SHASSR00519**C	2.2	Bridge Deck Replacement		640901	
84712	HAS US 250 9.650	SHASSR00250**C	9.65	Slide Repair		200000	
84714	HAS SR 258 1.670	SHASSR00258**C	1.67	Slide Repair		325000	
85107	CAR SR 212 0.000	SHASSR00212**C	0	Minor Rehabilitation - Pavement Gnrl Sys		1539116	
85109	HAS US 250 14.040	SHASSR00250**C	14.04	Minor Rehabilitation - Pavement Gnrl Sys		786612	
87162	HAS SR 9 17.400	SHASSR00009**C	17.38	Slide Repair		225000	

PID_NBR	PROJECT_NAME	NLF_ID	LOGPOINT	COUNTY_BEGIN	WORK_CATEGORY	TYPE	CONTRACT_AMT
85111	HAS SR 800 3.340	SHASSR00800**C	3.34	Minor Rehabilitation - Pavement Gnrl Sys		3851216	

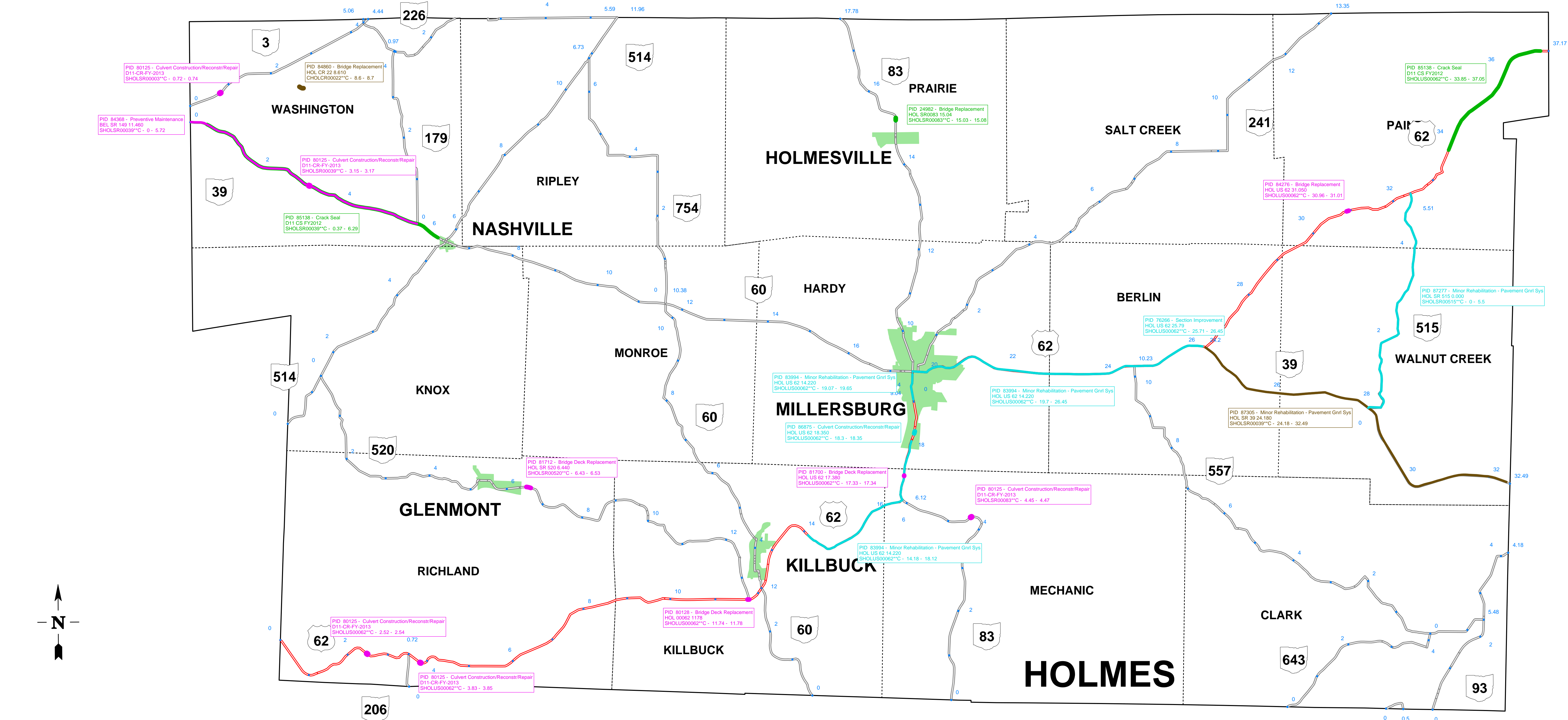
PID_NBR	PROJECT_NAME	NLF_ID	LOGPOINT	COUNTY_BEGIN	WORK_CATEGORY	TYPE	CONTRACT_AMT
87306	HAS SR 151 4.580	SHASSR00151**C	4.58	Minor Rehabilitation - Pavement Gnrl Sys		1637463	



Legend

- 2012 Projects
- 2013 Projects
- 2014 Projects
- 2015 Projects

District 11
Harrison County
FY 2012 - 2015
State Transportation
Improvement Program

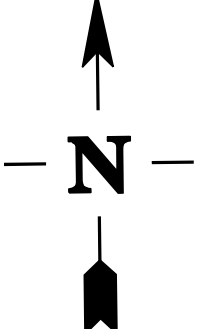
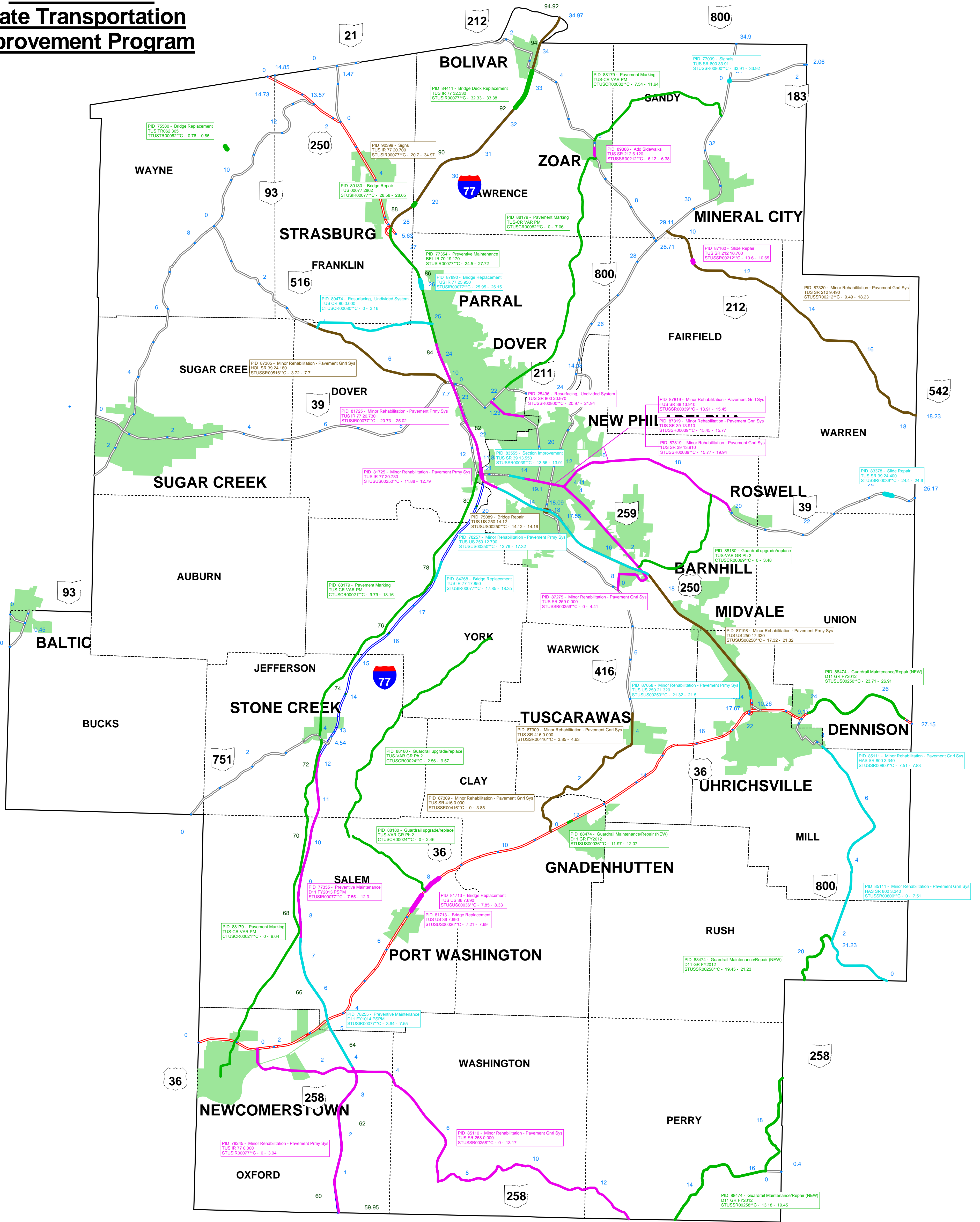


PID_NBR	PROJECT_NAME	NLF_ID	LOGPOINT_COUNTY_BEGIN	WORK_CATEGORY_TYPE	CONTRACT_AMT
24982	HOL SR0083 15.04	SHOLSR00083**C	15.03	Bridge Replacement	1876605
85138	D11 CS FY2012	SHOLSR00039**C	0.37	Crack Seal	253172
85138	D11 CS FY2012	SHOLUS00062**C	33.85	Crack Seal	253172
80125	D11-CR-FY-2013	SHOLSR00003**C	0.72	Culvert Construction/Reconstr/Repair	500000
80125	D11-CR-FY-2013	SHOLSR00083**C	4.45	Culvert Construction/Reconstr/Repair	500000
80125	D11-CR-FY-2013	SHOLUS00062**C	3.83	Culvert Construction/Reconstr/Repair	500000
80125	D11-CR-FY-2013	SHOLSR00039**C	3.15	Culvert Construction/Reconstr/Repair	500000
80125	D11-CR-FY-2013	SHOLUS00062**C	2.52	Culvert Construction/Reconstr/Repair	500000
80128	HOL 00062 1178	SHOLUS00062**C	11.74	Bridge Deck Replacement	1286268
81700	HOL US 62 17.380	SHOLUS00062**C	17.33	Bridge Deck Replacement	297747
81712	HOL SR 520 6.440	SHOLSR00520**C	6.43	Bridge Deck Replacement	792007
84276	HOL US 62 31.050	SHOLUS00062**C	30.96	Bridge Replacement	363251
84368	BEL SR 149 11.460	SHOLSR00039**C	0	Preventive Maintenance	1261029
76266	HOL US 62 25.79	SHOLUS00062**C	25.71	Section Improvement	3800000
83994	HOL US 62 14.220	SHOLUS00062**C	14.18	Minor Rehabilitation - Pavement Gnrl Sys	3101371
83994	HOL US 62 14.220	SHOLUS00062**C	19.07	Minor Rehabilitation - Pavement Gnrl Sys	3101371
83994	HOL US 62 14.220	SHOLUS00062**C	19.7	Minor Rehabilitation - Pavement Gnrl Sys	3101371
86875	HOL US 62 18.350	SHOLUS00062**C	18.3	Culvert Construction/Reconstr/Repair	356399
87277	HOL SR 515 0.000	SHOLSR00515**C	0	Minor Rehabilitation - Pavement Gnrl Sys	1233016
84860	HOL CR 22 8.610	CHOLCR00022**C	8.6	Bridge Replacement	1472120
87305	HOL SR 39 24.180	SHOLSR00039**C	24.18	Minor Rehabilitation - Pavement Gnrl Sys	2894339

- Legend**
- 2012 Projects
 - 2013 Projects
 - 2014 Projects
 - 2015 Projects

**District 11
Holmes County
FY 2012 - 2015
State Transportation
Improvement Program**

District 11 Tuscarawas County FY 2012 - 2015 State Transportation Improvement Program



Legend

- 2012 Projects
- 2013 Projects
- 2014 Projects
- 2015 Projects

PID_NBR	PROJECT_NAME	NLF_ID	LOGPOINT_COUNTY_BEGIN	WORK_CATEGORY_TYPE	CONTRACT_AMT
75580	TUS TR062.305	TTUSTR00062**C		0.76 Bridge Replacement	490000
77354	BEL IR 70 19.170	STUSIR00077**C		24.5 Preventive Maintenance	3658560
80130	TUS 00077.2862	STUSIR00077**C		28.58 Bridge Repair	2198215
84411	TUS IR 77 32.330	STUSIR00077**C		32.33 Bridge Deck Replacement	1179079
88179	TUS-CR VAR PM	CTUSCR00082**C		0 Pavement Marking	150650
88179	TUS-CR VAR PM	CTUSCR00021**C		0 Pavement Marking	150650
88179	TUS-CR VAR PM	CTUSCR00021**C		9.79 Pavement Marking	150650
88180	TUS-VAR GR Ph 2	CTUSCR00024**C		2.56 Guardrail upgrade/replace	305213.39
88180	TUS-VAR GR Ph 2	CTUSCR00069**C		0 Guardrail upgrade/replace	305213.39
88180	TUS-VAR GR Ph 2	CTUSCR00024**C		0 Guardrail upgrade/replace	305213.39
88474	D11 GR FY2012	STUSSR00258**C		19.45 Guardrail Maintenance/Repair (NEW)	900000
88474	D11 GR FY2012	STUSSR00258**C		13.18 Guardrail Maintenance/Repair (NEW)	900000
88474	D11 GR FY2012	STUSSR00250**C		23.71 Guardrail Maintenance/Repair (NEW)	900000
88474	D11 GR FY2012	STUSSR00036**C		11.97 Guardrail Maintenance/Repair (NEW)	900000

PID_NBR	PROJECT_NAME	NLF_ID	LOGPOINT_COUNTY_BEGIN	WORK_CATEGORY_TYPE	CONTRACT_AMT
25496	TUS SR 800 20.970	STUSSR00800**C		20.97 Resurfacing, Undivided System	444881
77355	D11 FY2013 PSPM	STUSIR00077**C		7.55 Preventive Maintenance	3843136
78245	TUS IR 77 0.000	STUSIR00077**C		0 Minor Rehabilitation - Pavement Prmy Sys	3170347
81713	TUS US 36 7.690	STUSSR00036**C		7.85 Bridge Replacement	934926
81713	TUS US 36 7.690	STUSSR00036**C		7.21 Bridge Replacement	934926
81725	TUS IR 77 20.730	STUSSR00250**C		11.88 Minor Rehabilitation - Pavement Prmy Sys	4208355
81725	TUS IR 77 20.730	STUSSR00077**C		20.73 Minor Rehabilitation - Pavement Prmy Sys	4208355
85110	TUS SR 258 0.000	STUSSR00258**C		0 Minor Rehabilitation - Pavement Grnl Sys	2807501
87160	TUS SR 212 10.700	STUSSR00212**C		10.61 Slide Repair	210000
87275	TUS SR 259 0.000	STUSSR00259**C		0 Minor Rehabilitation - Pavement Grnl Sys	940097
87819	TUS SR 39 13.910	STUSSR00039**C		15.45 Minor Rehabilitation - Pavement Grnl Sys	1465766
87819	TUS SR 39 13.910	STUSSR00039**C		15.77 Minor Rehabilitation - Pavement Grnl Sys	1465766
87819	TUS SR 39 13.910	STUSSR00039**C		13.91 Minor Rehabilitation - Pavement Grnl Sys	1465766
89366	TUS SR 212 6.120	STUSSR00212**C		6.12 Add Sidewalks	513600

PID_NBR	PROJECT_NAME	NLF_ID	LOGPOINT_COUNTY_BEGIN	WORK_CATEGORY_TYPE	CONTRACT_AMT
77009	TUS SR 800 33.91	STUSSR00800**C		33.91 Signals	1580000
78255	D11 FY1014 PSPM	STUSIR00077**C		3.94 Preventive Maintenance	4034304
78257	TUS US 250 12.790	STUSSR00250**C		12.79 Minor Rehabilitation - Pavement Prmy Sys	3826411
83378	TUS SR 39 24.400	STUSSR00039**C		24.4 Slide Repair	550000
83555	TUS SR 39 13.550	STUSSR00039**C		13.55 Section Improvement	1519000
84268	TUS IR 77 17.850	STUSSR00077**C		17.85 Bridge Replacement	2438519
85111	HAS SR 800 3.340	STUSSR00800**C		0 Minor Rehabilitation - Pavement Grnl Sys	3851216
85111	HAS SR 800 3.340	STUSSR00800**C		7.51 Minor Rehabilitation - Pavement Grnl Sys	3851216
87058	TUS US 250 21.320	STUSSR00250**C		21.32 Minor Rehabilitation - Pavement Prmy Sys	680789
87890	TUS IR 77 25.950	STUSIR00077**C		25.95 Bridge Replacement	2615735
89474	TUS CR 80 0.000	CTUSCR00080**C		0 Resurfacing, Undivided System	2105500

PID_NBR	PROJECT_NAME	NLF_ID	LOGPOINT_COUNTY_BEGIN	WORK_CATEGORY_TYPE	CONTRACT_AMT
75089	TUS US 250 14.12	STUSSR00250**C		14.12 Bridge Repair	2501741
87198	TUS US 250 17.320	STUSSR00250**C		17.32 Minor Rehabilitation - Pavement Prmy Sys	3635792
87305	HOL SR 39 24.180	STUSSR00516**C		3.72 Minor Rehabilitation - Pavement Grnl Sys	2894339
87309	TUS SR 416 0.000	STUSSR00416**C		0 Minor Rehabilitation - Pavement Grnl Sys	1087726
87309	TUS SR 416 0.000	STUSSR00416**C		3.85 Minor Rehabilitation - Pavement Grnl Sys	1087726
87320	TUS SR 212 9.490	STUSSR00212**C		9.49 Minor Rehabilitation - Pavement Grnl Sys	2090878
90399	TUS IR 77 20.700	STUSIR00077**C		20.7 Signs	882000