

THE OHIO TRANSPORTATION NETWORK: A GATEWAY TO ECONOMIC GROWTH

New Interchange at US-20/SR-420/Pemberville Road

A Safety Improvement that Promotes Economic Development



October 23, 2007

Co-Presenters

Stephen M. Way, P.E.

*Principal, Managing Director
DGL Consulting Engineers, LLC*

Thomas R. Blaha

*Executive Director
Wood County Economic Development Commission*

Project Team

Project: WOO-20-11.05

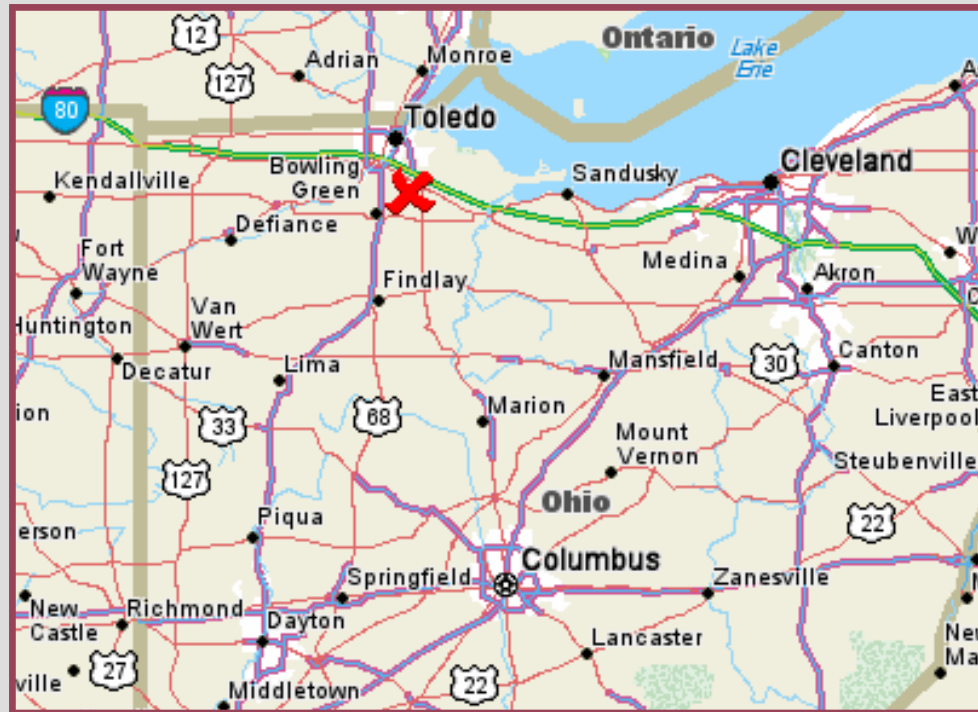
Owner: ODOT District 2

Designer: DGL Consulting Engineers, LLC

Contractor: E.S. Wagner Company

Const. Cost: \$20.0 Million

Location Map



Project Site



Existing Conditions



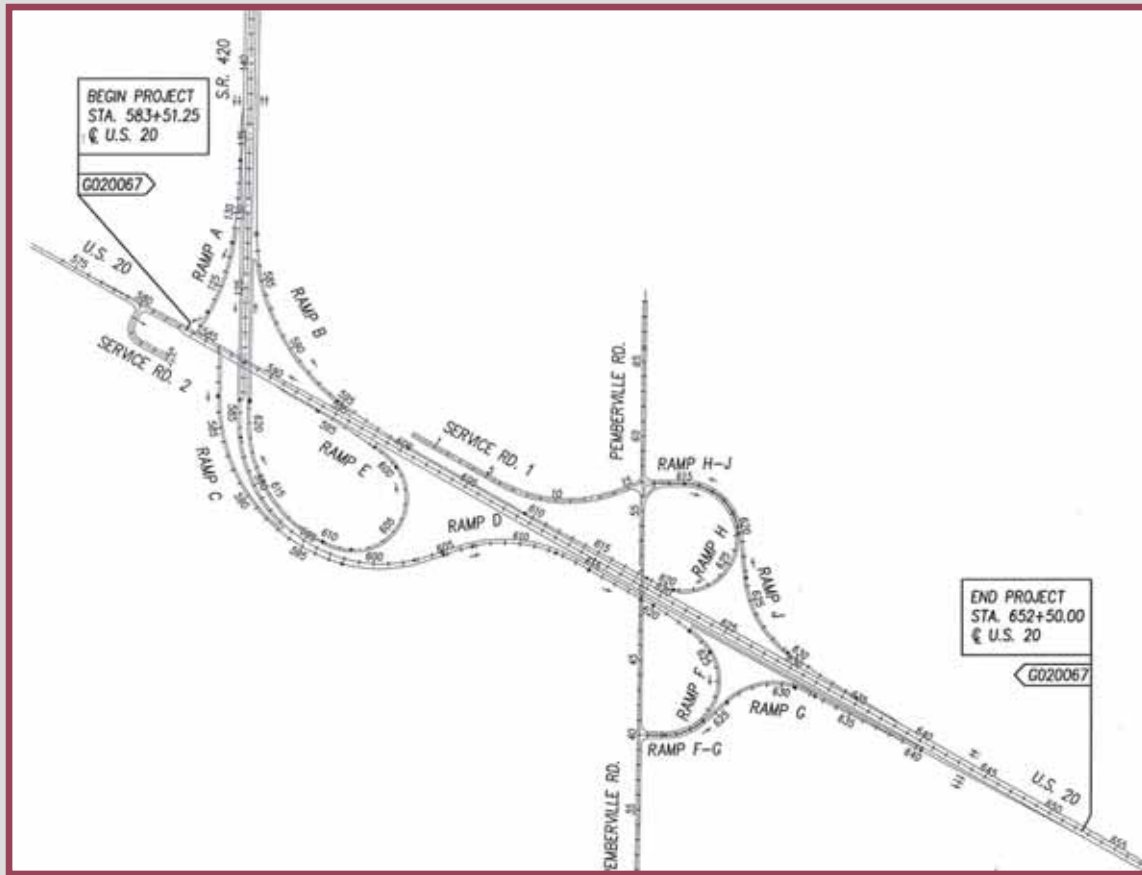
Purpose & Need:

- System Linkage
- Capacity
- Safety
- Roadway Deficiencies
- Transportation Demand

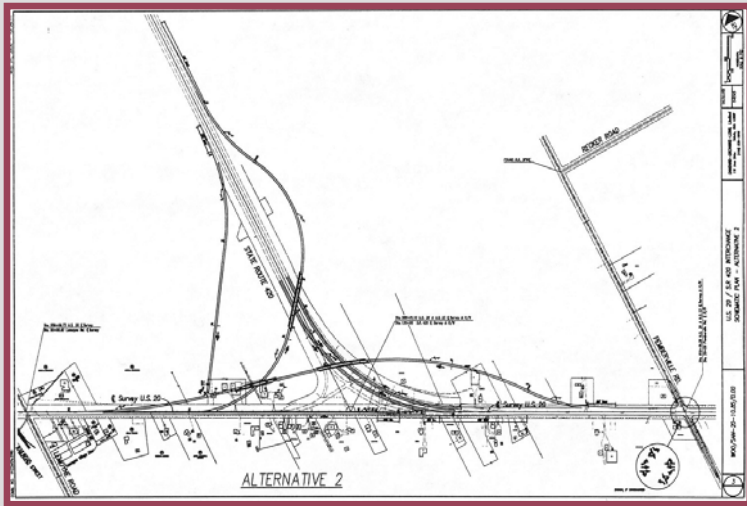
Environmental Process

- Corridor Wide Studies (30 miles)
 - ESA Screening & Phase 1
 - Cultural Resources – Reconnaissance & Assessments
 - Ecological Survey Report
- Lemoyne to Woodville (18 miles)
 - Open House Format Public Meeting
 - Relocation Assistance Program
- Categorical Exclusion, Level 4 Document

Environmental – Preferred Alternate

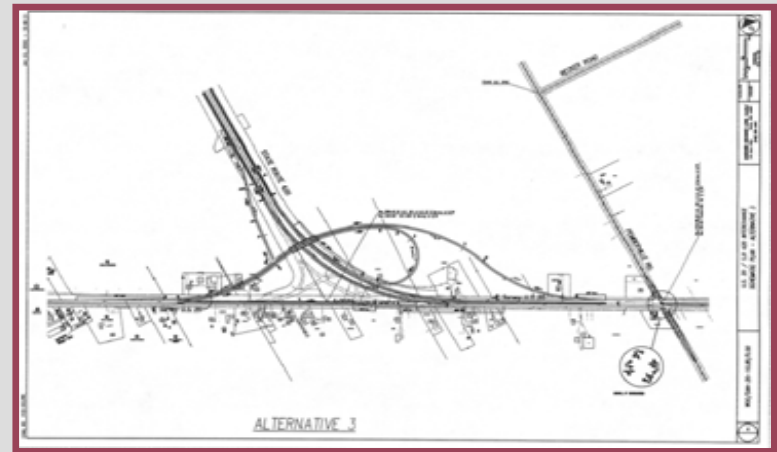


Environmental – *Design Alternates*



← Alternate No. 2

Alternate No. 3 →



Environmental - *Public Involvement*

- “I’m certainly in favor of widening Route 20 and improving the US 20/SR 420 interchange (a very confusing and dangerous interchange).”
- “I think the four lanes west of Woodville and east of 420 is a must. Also the interchange at 420 should be done – soon!”
- “This project should move forward as quickly as possible!”

PUBLIC MEETING COMMENT SHEET
WOOSAN-20-10.B510.09 – MAY 13, 2009
U.S. ROUTE 20 IMPROVEMENT
U.S. ROUTE 20/ S.R. 420 INTERCHANGE

ANYONE WISHING TO SUBMIT COMMENTS CONCERNING THE U.S. ROUTE 20 IMPROVEMENT AND THE U.S. 20/S.R. 420 INTERCHANGE MAY DO SO BY PRESENTING THIS FORM AT THIS MEETING OR BY MAILING IT TO THE OHIO DEPARTMENT OF TRANSPORTATION, DISTRICT DEPUTY DIRECTOR, 317 EAST POE ROAD, BOWLING GREEN, OHIO 43402. THE FINAL DATE FOR SUBMISSION OF COMMENTS IS JUNE 6, 2009.

NAME _____
STREET ADDRESS _____
CITY, STATE, ZIP _____
TELEPHONE _____
ORGANIZATION (if applicable) _____

Please circle preferred Alternative for the U.S. 20/S.R. 420 Interchange:
Alternative 1 Alternative 2 Alternative 3

Please circle preferred Ramp Configuration for U.S. 20 and Pemberville Road:
Ramp A Ramp B Ramp C

Comments regarding U.S. 20 Improvement:

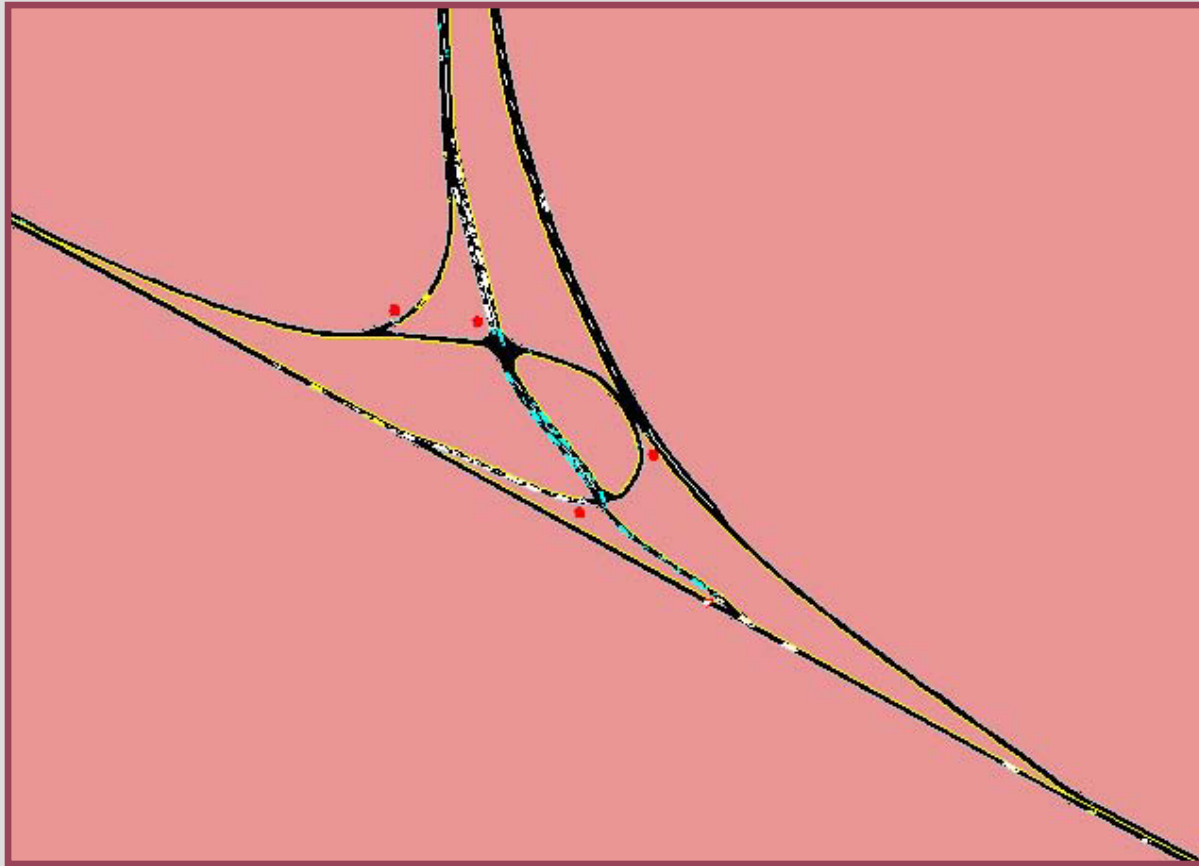
Other Comments:

This sheet can be folded in thirds, taped or stapled, and mailed without an envelope.
Postage is required.

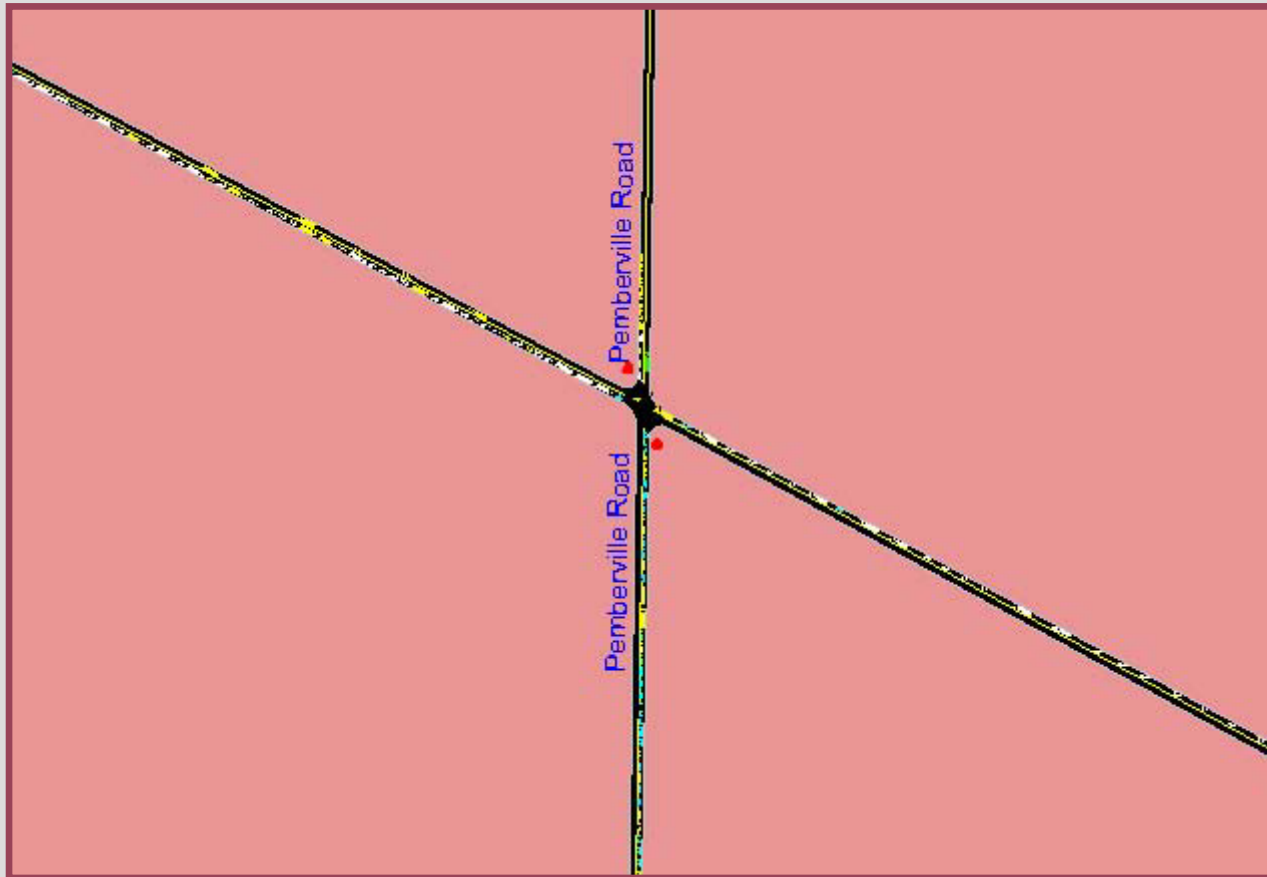
Traffic Demand & Capacity



Traffic Demand & Capacity (*cont.*)



Traffic Demand & Capacity (*cont.*)



Construction Process



- ODOT Partnering
- MOT Alternatives
- 2 Construction Seasons
- Concrete Pavement

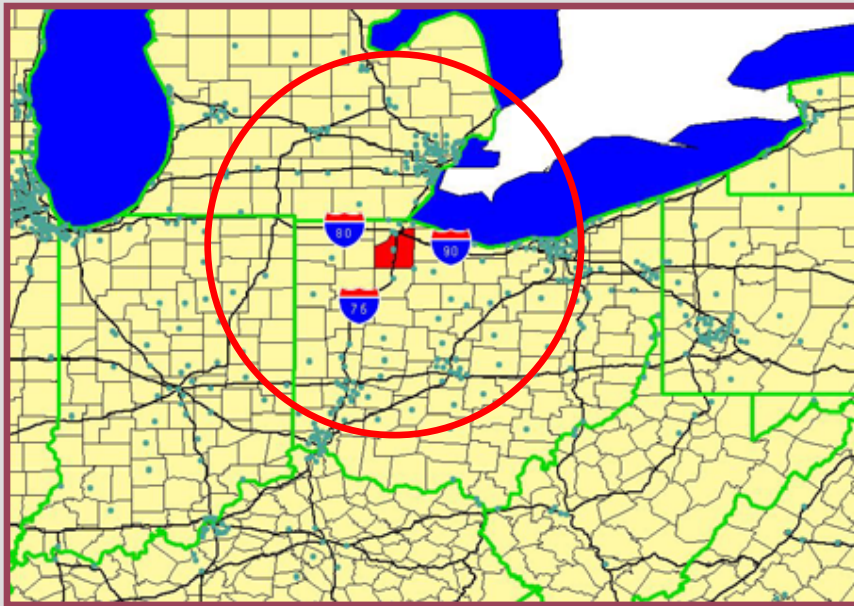
Construction Progress



Finished Project

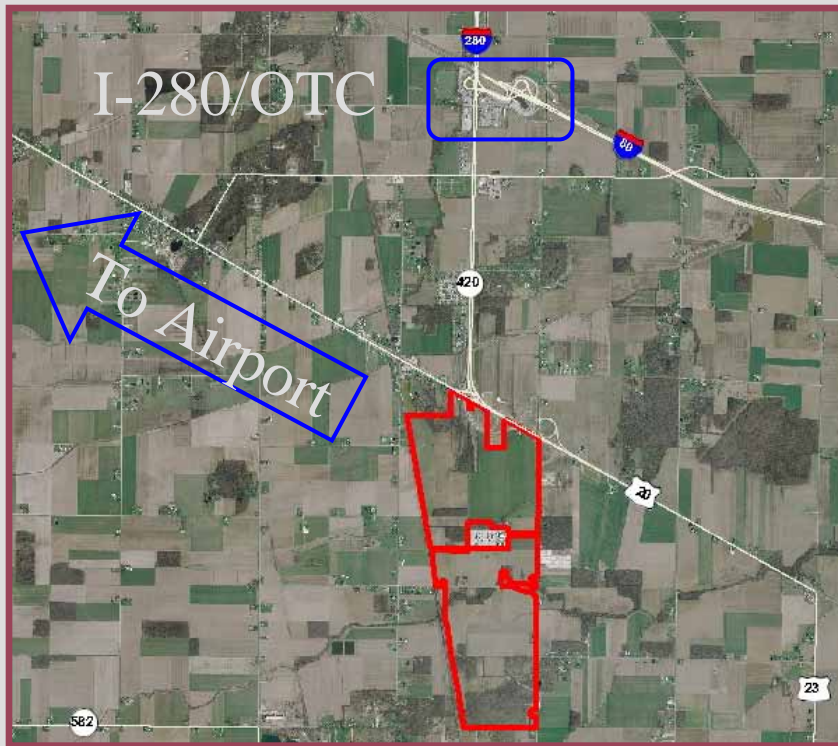


Build It & They Will Come!



- 18M Pop. within 2 hrs.
- Intermodal Capability
- Industrial Utility Cap.

Build It & They Will Come!



- 1000 \pm acres – single owner (mega-site)
- Gen. Aviation Airport within 3mi.
- I-280/Ohio Turnpike Interchange within 2mi.

Conclusion

- *Economic Development:*
 - The interchange at US-20/SR-420/Pemberville Road helped yield the most immediately marketable mega-site in the entire Midwest!
- *Capacity/Safety:*
 - The project has increased capacity through the project site, while decreasing the number of conflict points (i.e. improved safety).

Conclusion

“The new interchange provides for easier movement of vehicles and greatly improved safety!”

*James “Bob” Rickard
Works Administrator
Village of Woodville, OH*

Thank you!

A special thank you to the following individuals for assisting with background information for this presentation:

- Wade Gottschalk – Associate Director, WCEDC
- Jason Yeray – Traffic Engineer, ODOT D2

Questions ...

Stephen M. Way, P.E.

DGL Consulting Engineers, LLC

Ph. (419) 535-1015

sway@dgl-ltd.com

Thomas R. Blaha

Wood County Economic Development Commission

Ph. (419) 352-7469

tblaha@woodcounty.com