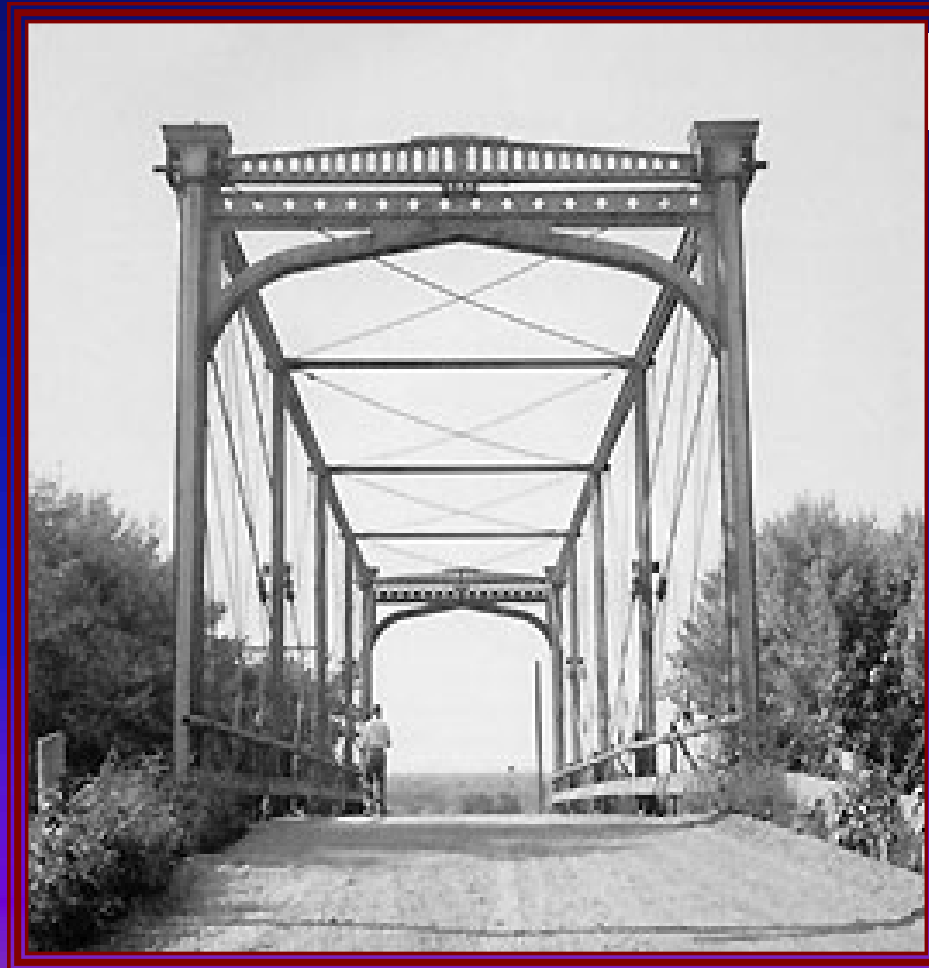




# Zoarville Station Bridge

Camp Tuscazoar Foundation  
Zoarville, Ohio

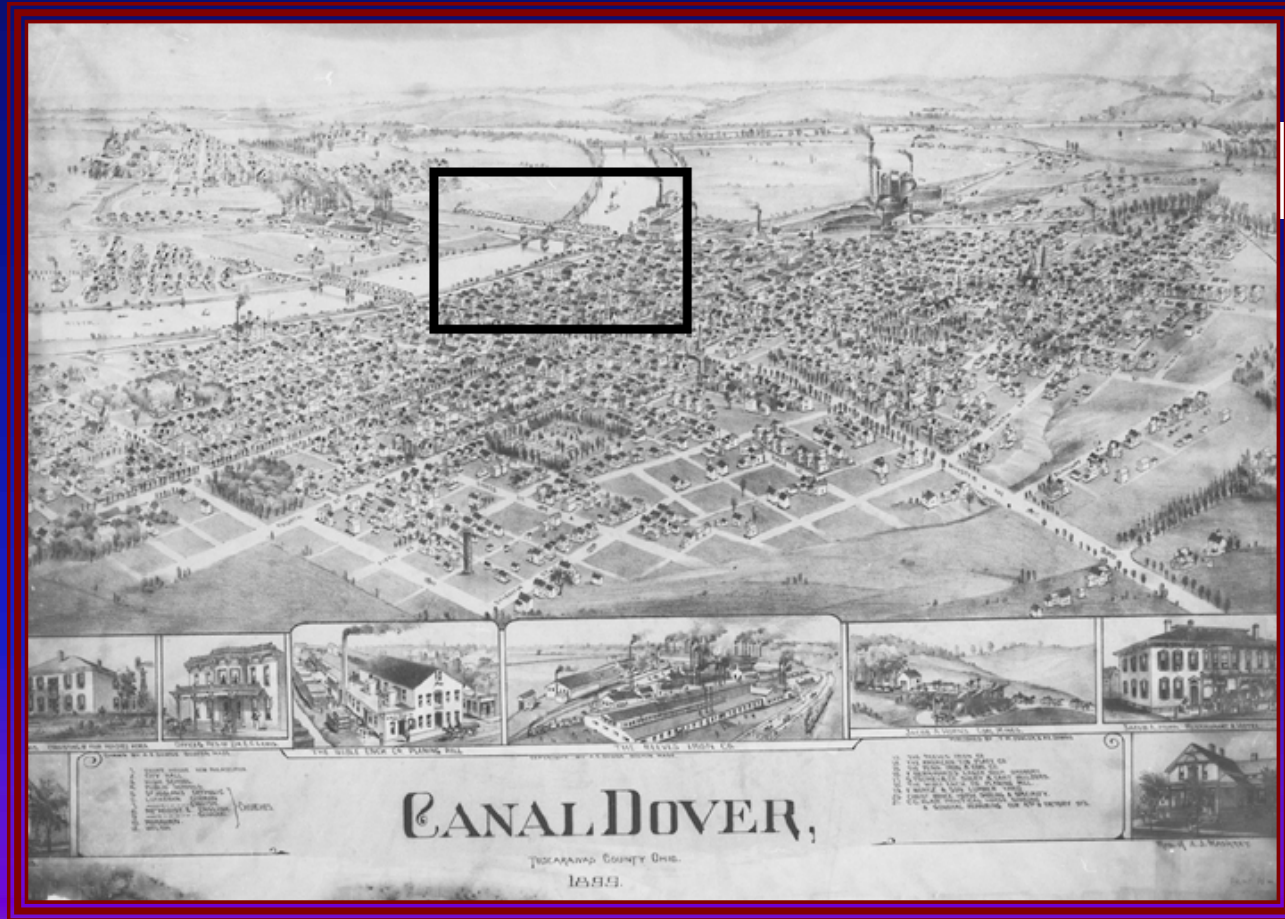


ODOT photo



# Zoarville Station Bridge

Camp Tuscazoar Foundation  
Zoarville, Ohio

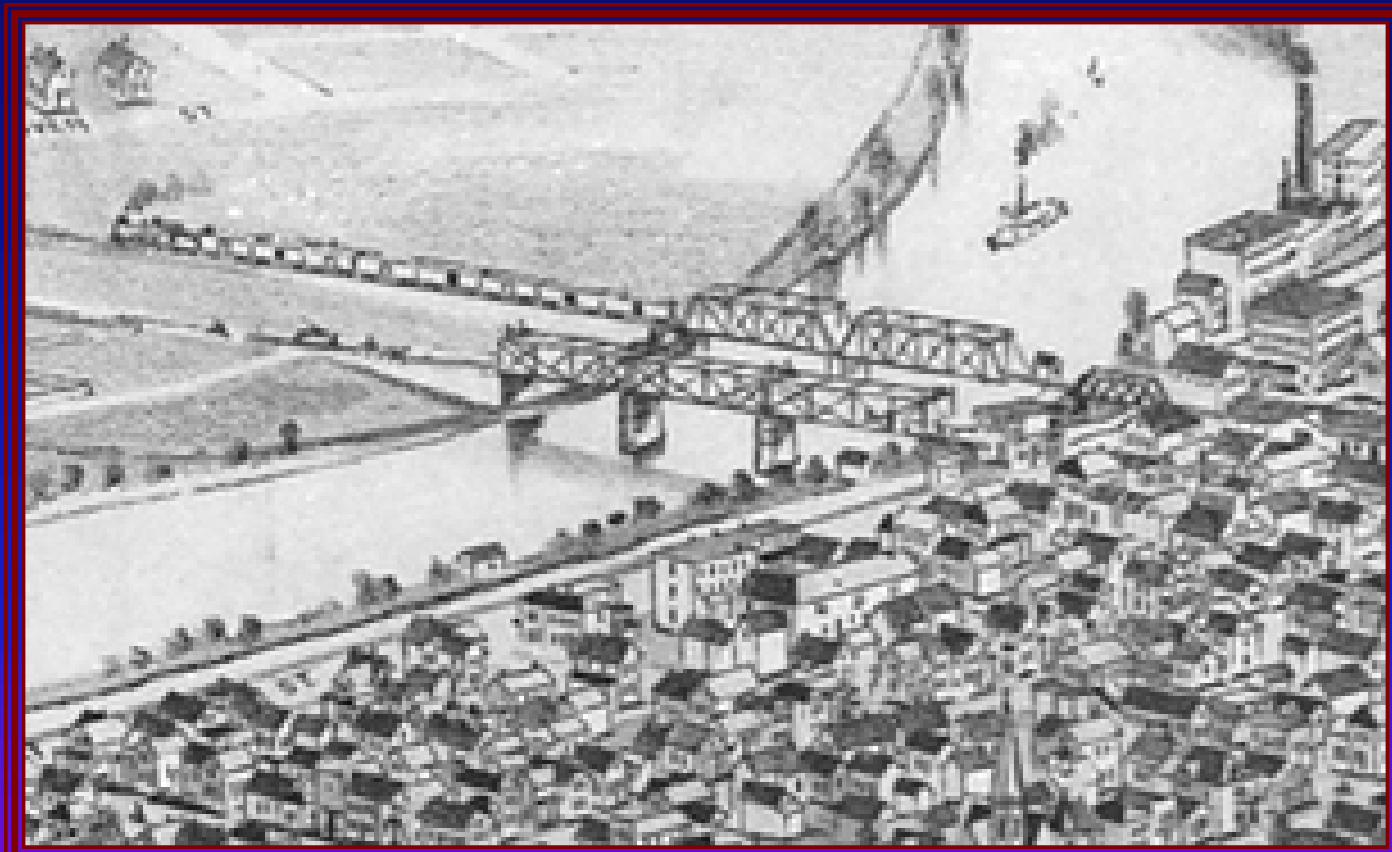


Courtesy of Ohio Historical Society



# Zoarville Station Bridge

Camp Tuscazoar Foundation  
Zoarville, Ohio



Courtesy of  
Ohio Historical  
Society



# Zoarville Station Bridge

## Camp Tuscazoar Foundation

### Zoarville, Ohio

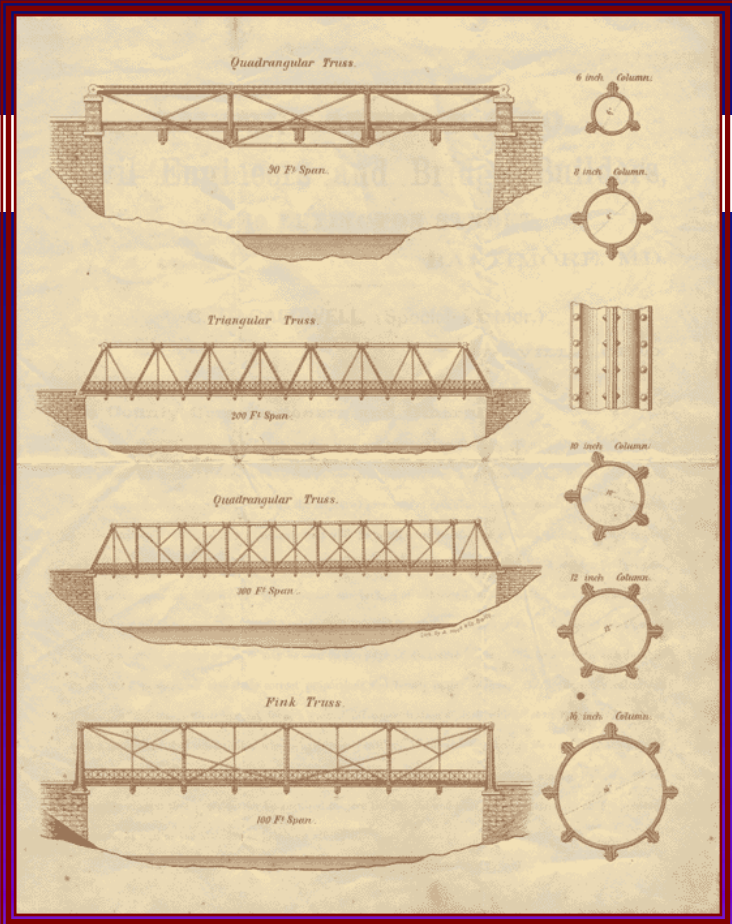


**SMITH, LATROBE & CO.,**  
**Civil Engineers and Bridge Builders,**  
**No. 49 LEXINGTON STREET,**  
**BALTIMORE, MD.**

C. D. CALDWELL, (Special Partner,)  
**ZANESVILLE, OHIO.**

**To County Commissioners and Others:**

Your attention is hereby called to the within improved forms of Iron Bridges. These bridges have heretofore been principally confined to rail-road use, and in our own practice, with invariable success. We now offer them for highway purposes, convinced that with the improved processes of manufacture at our command, we can furnish parties interested complete iron structures that will be much more satisfactory as to durability, beauty, safety, and comparative cost, (when the material is considered,) than the defective and short-lived wooden bridges generally in use upon our highways. We construct our bridges of superior iron, arranging and combining their details upon correct and well-established mechanical principles. Our chords and posts are formed of the Phoenix wrought columns, sections of which may be seen on the page of diagrams inside. Whilst strength and durability are our first aims, we also study correct proportions and beauty in our designs. Our bridges are calculated to bear, in addition to their general load, a great local concentration of load which not unfrequently occurs, as with a pair of heavily loaded timber wheels, or droves of cattle. We desire every bridge we erect to be thoroughly tested before being turned over to its purchasers. In order to secure fair competition among builders, we respectfully suggest that every bidder be required to give the general and panel working strength of his proposed structure, as well as the ultimate or breaking strength.



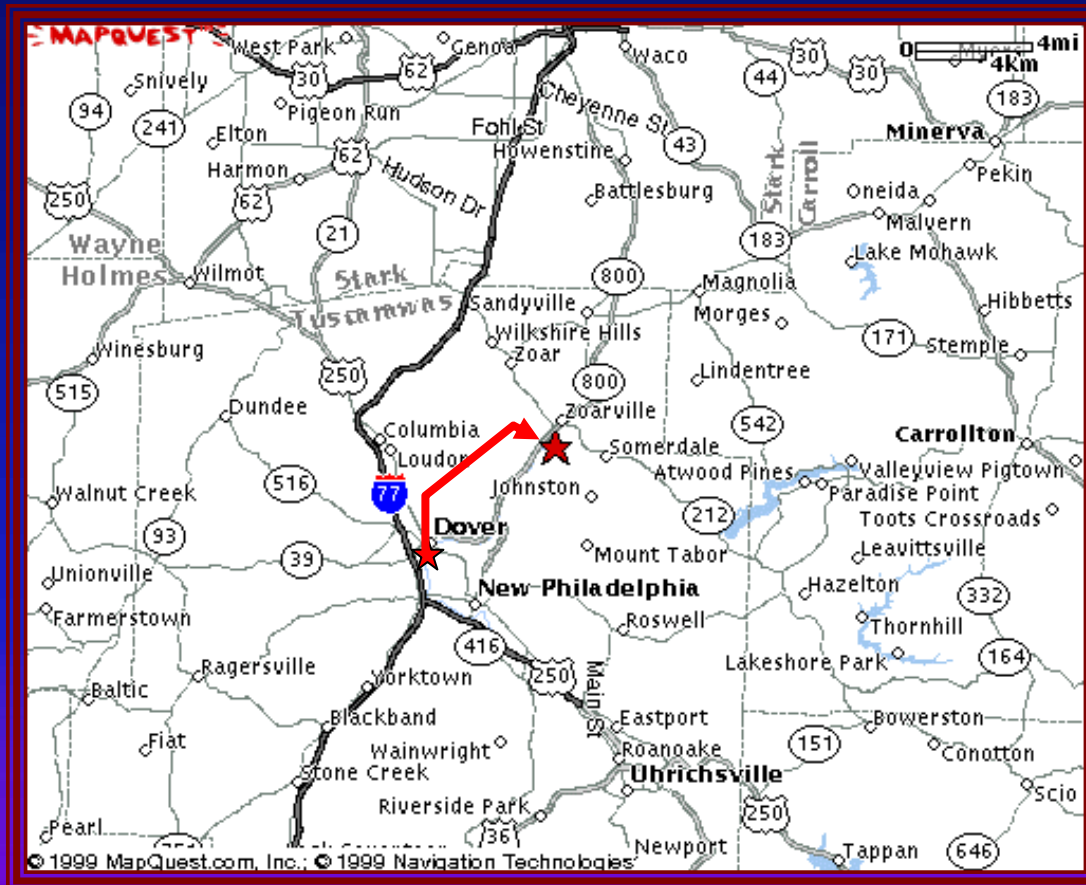
Courtesy of the Morrison Family Collection and the Ohio Historical Society



# Zoarville Station Bridge

## Camp Tuscazoar Foundation

### Zoarville, Ohio



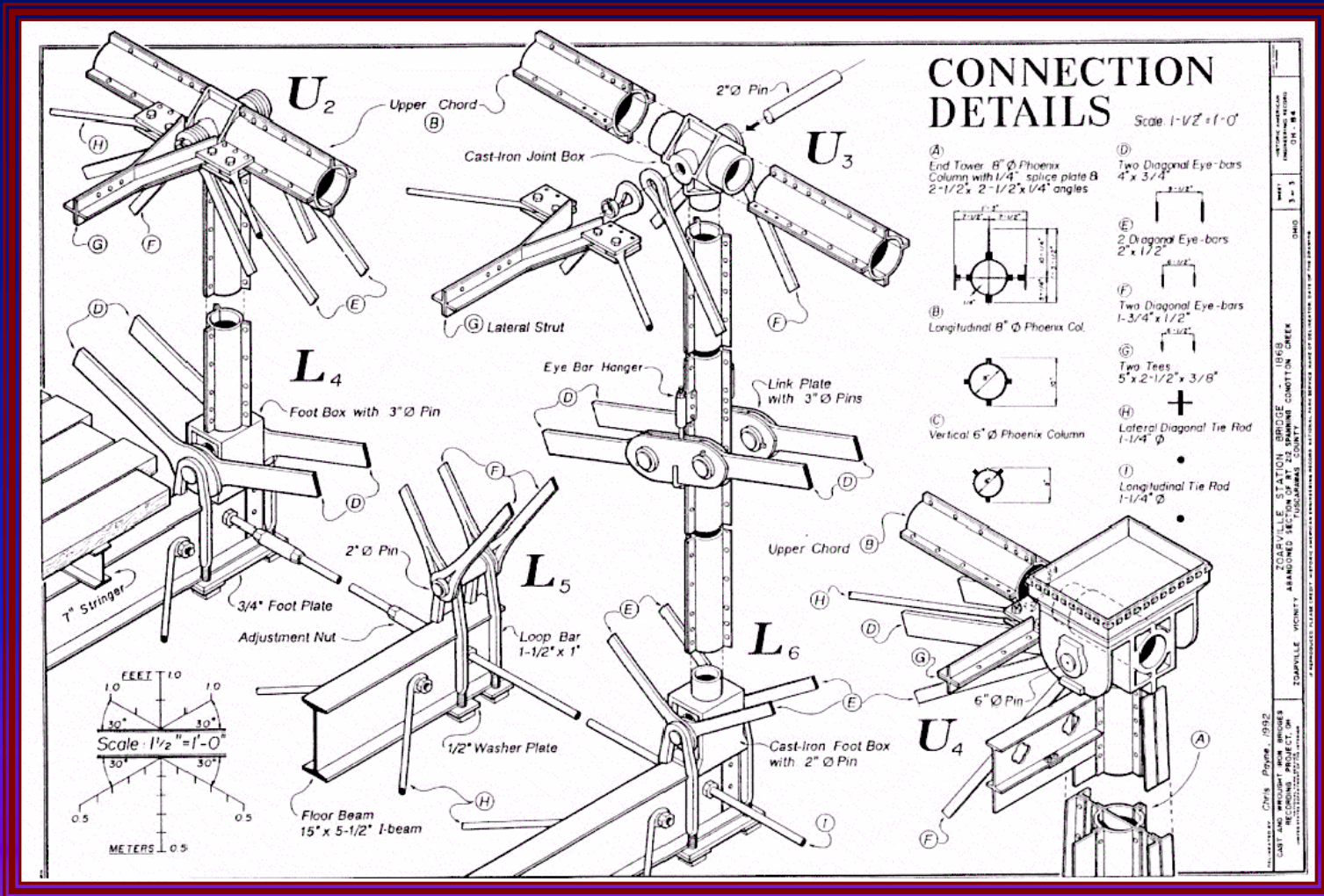




# Zoarville Station Bridge

## Camp Tuscazoar Foundation

### Zoarville, Ohio



Courtesy of Historical American Engineering Record



# Zoarville Station Bridge

Camp Tuscazoar Foundation  
Zoarville, Ohio



Courtesy of The Makers of  
Hand-Forged Iron



# Zoarville Station Bridge

Camp Tuscazoar Foundation  
Zoarville, Ohio





# Zoarville Station Bridge

Camp Tuscazoar Foundation  
Zoarville, Ohio





# Zoarville Station Bridge

Camp Tuscazoar Foundation  
Zoarville, Ohio





# Zoarville Station Bridge

Camp Tuscazoar Foundation  
Zoarville, Ohio





# Zoarville Station Bridge

Camp Tuscazoar Foundation  
Zoarville, Ohio



Courtesy of The Makers of  
Hand-Forged Iron



# Zoarville Station Bridge

Camp Tuscazoar Foundation  
Zoarville, Ohio





# Zoarville Station Bridge

Camp Tuscazoar Foundation  
Zoarville, Ohio





# Zoarville Station Bridge

Camp Tuscazoar Foundation  
Zoarville, Ohio



Courtesy of The Makers of  
Hand-Forged Iron



# Zoarville Station Bridge

Camp Tuscazoar Foundation  
Zoarville, Ohio



Courtesy of The Makers of  
Hand-Forged Iron



# Zoarville Station Bridge

Camp Tuscazoar Foundation  
Zoarville, Ohio

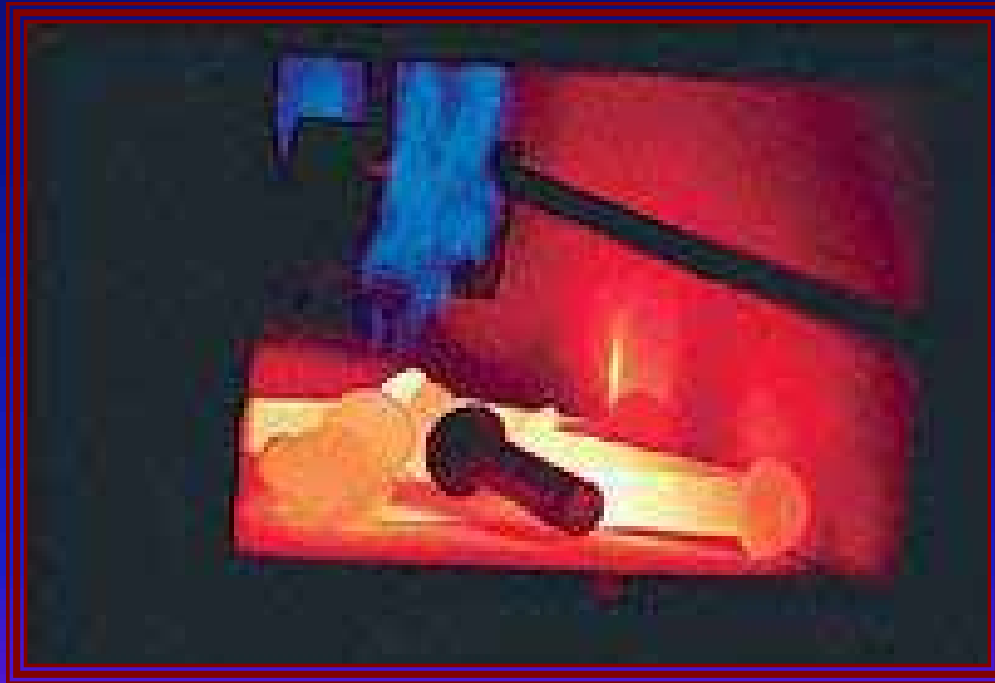


Courtesy of The  
Makers of Hand-  
Forged Iron



# Zoarville Station Bridge

Camp Tuscazoar Foundation  
Zoarville, Ohio

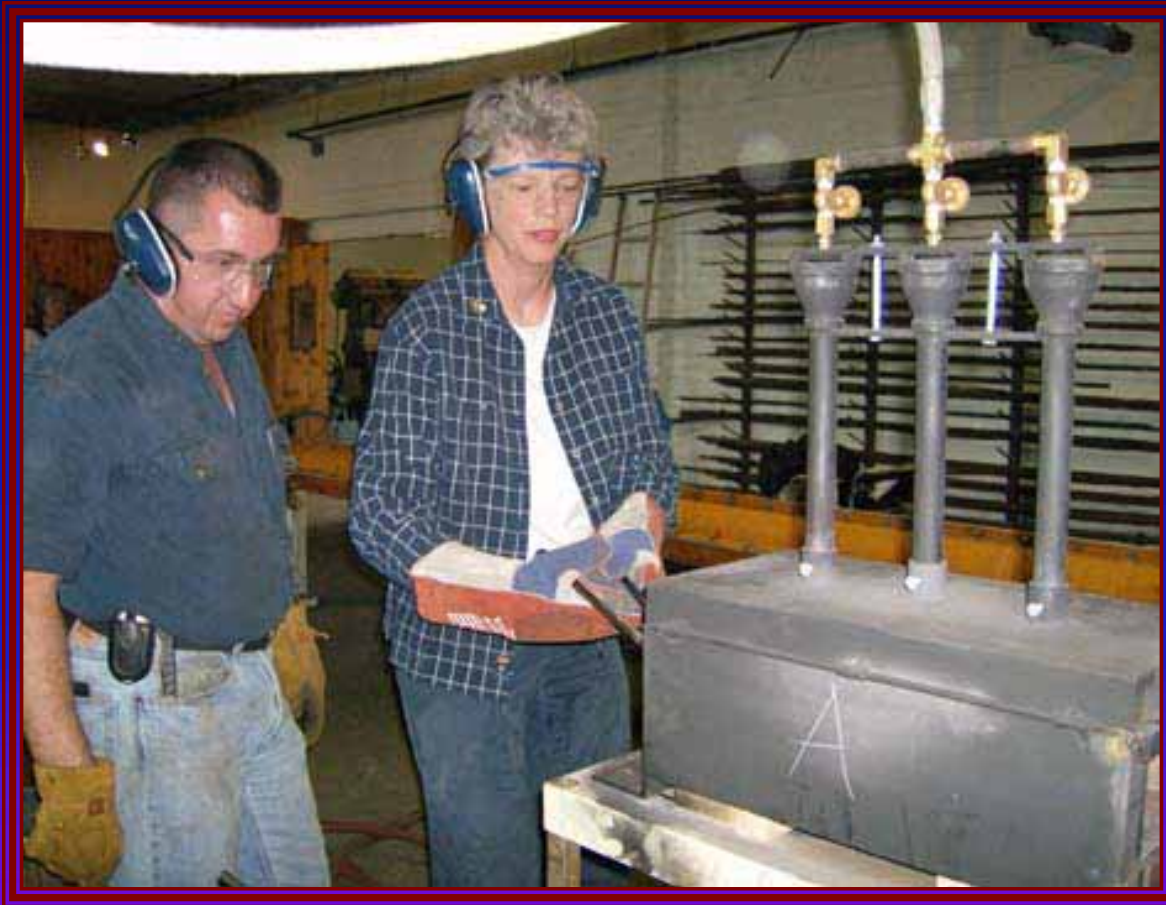


Courtesy of The Makers of  
Hand-Forged Iron



# Zoarville Station Bridge

Camp Tuscazoar Foundation  
Zoarville, Ohio



Courtesy of The Makers  
of Hand-Forged Iron



# Zoarville Station Bridge

Camp Tuscazoar Foundation  
Zoarville, Ohio





# Zoarville Station Bridge

Camp Tuscazoar Foundation  
Zoarville, Ohio





# Zoarville Station Bridge

Camp Tuscazoar Foundation  
Zoarville, Ohio



Courtesy of The Makers  
of Hand-Forged Iron



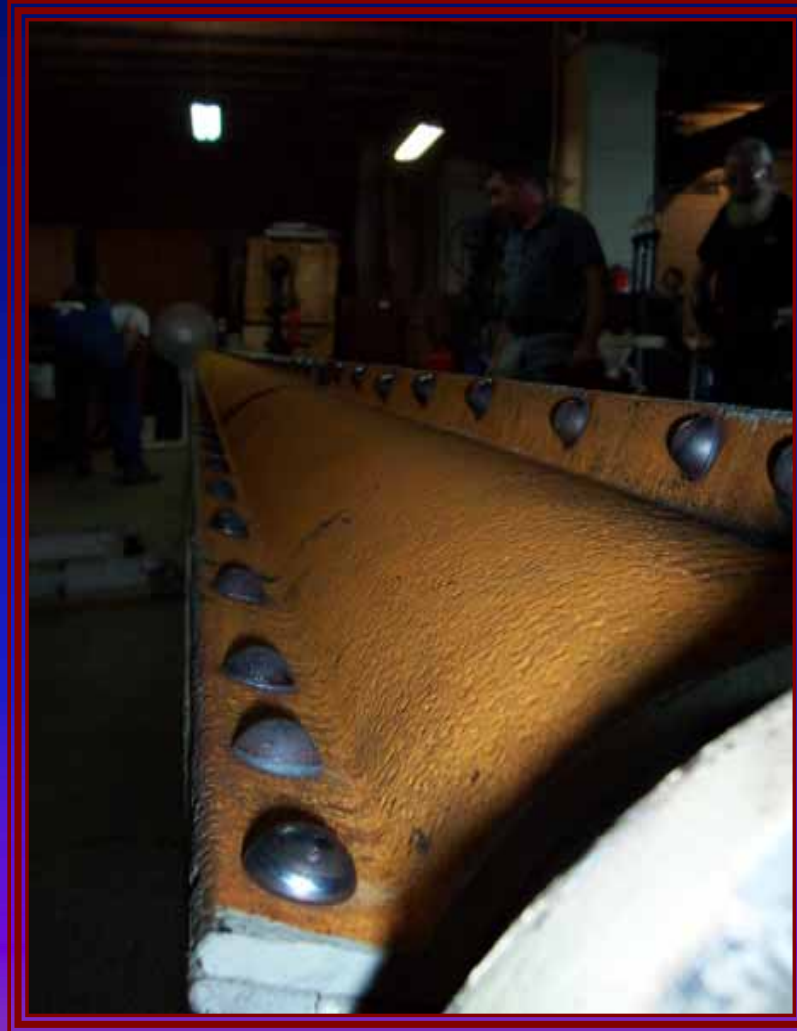
# Zoarville Station Bridge

Camp Tuscazoar Foundation  
Zoarville, Ohio





**Zoarville Station Bridge**  
Camp Tuscazoar Foundation  
Zoarville, Ohio





# Zoarville Station Bridge

Camp Tuscazoar Foundation  
Zoarville, Ohio





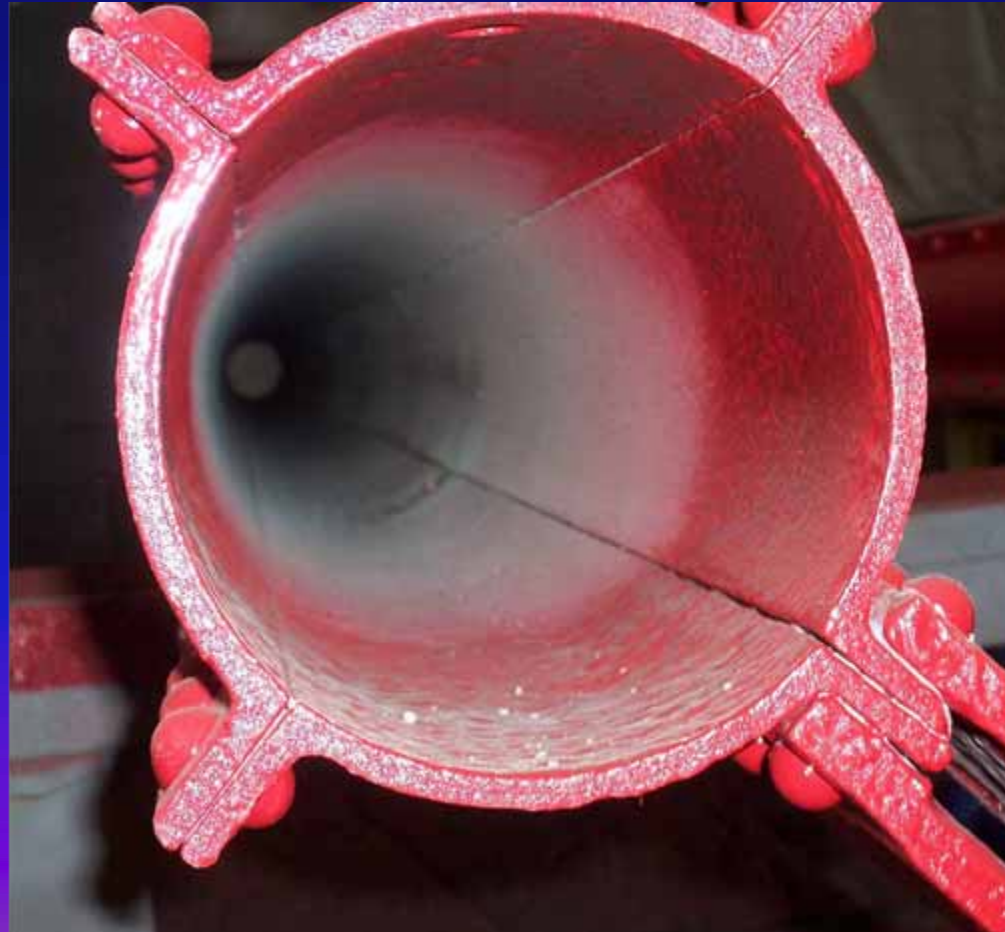
# Zoarville Station Bridge

Camp Tuscazoar Foundation  
Zoarville, Ohio





**Zoarville Station Bridge**  
Camp Tuscazoar Foundation  
Zoarville, Ohio





**Zoarville Station Bridge**  
Camp Tuscazoar Foundation  
Zoarville, Ohio





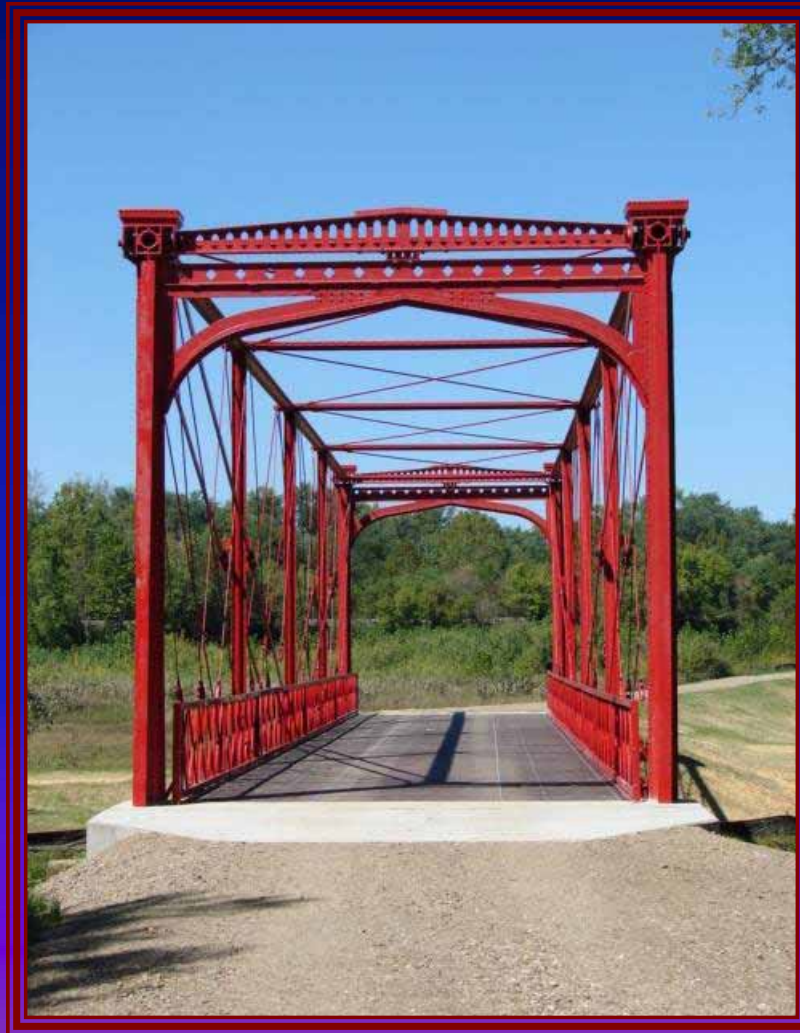
# Zoarville Station Bridge

Camp Tuscazoar Foundation  
Zoarville, Ohio





**Zoarville Station Bridge**  
Camp Tuscazoar Foundation  
Zoarville, Ohio





# Zoarville Station Bridge

Camp Tuscazoar Foundation  
Zoarville, Ohio





**Zoarville Station Bridge**  
Camp Tuscazoar Foundation  
Zoarville, Ohio





**Zoarville Station Bridge**  
Camp Tuscazoar Foundation  
Zoarville, Ohio





**Zoarville Station Bridge**  
Camp Tuscazoar Foundation  
Zoarville, Ohio



**QUESTIONS?**