



# Case Study: Ohio Franklin County Engineer's Snow Plow Routing Project

GIS Map Update and GIS Integration

Presented by:

Transmap® Corporation

For OTEC 2008



# Transmap® Fundamentals

Transmap® team consists of in-house GIS project managers, GIS Professionals, Professional Surveyors and Engineers.

20 dedicated professionals who specialize in asset/pavement management solutions for small, medium, and large transportation and public works agencies.

# Transmap's GIS Core

- ESRI ArcGIS
- ESRI SDE Server - Centralized, Scalable Multi-user Environment
- ESRI ArcGIS Customized Extensions and Solutions





































# Combat: Transmap<sup>®</sup> GIS TOOLBOX

IMAGEVIEWER

GIS INTEGRATION



Module used during **Linear Feature GIS Integration** that does the following

- ✓ Assigns begin and end milepost to each linear feature
- ✓ Draws linear features based on the change events on the routes
- ✓ Executes further validation routines to ensure correct measurement and packaging
  - ✓ Gap analysis,
  - ✓ Overlap Analysis,
  - ✓ Difference Analysis,
  - ✓ Redundant Analysis

# Combat: Transmap® GIS TOOLBOX



## Tracking and Reporting Tool

- ✓ Connects to the live data repository in ArcSDE and SQL Server
- ✓ Integrates within ArcMap as a custom ArcGIS extension
- ✓ Systematic approach to project management – Claim, Complete, Track, Report
- ✓ Customizable per project needs and changes in workflow
- ✓ Reports project progress in various formats – Measurable Units, Output Files and PDF Maps

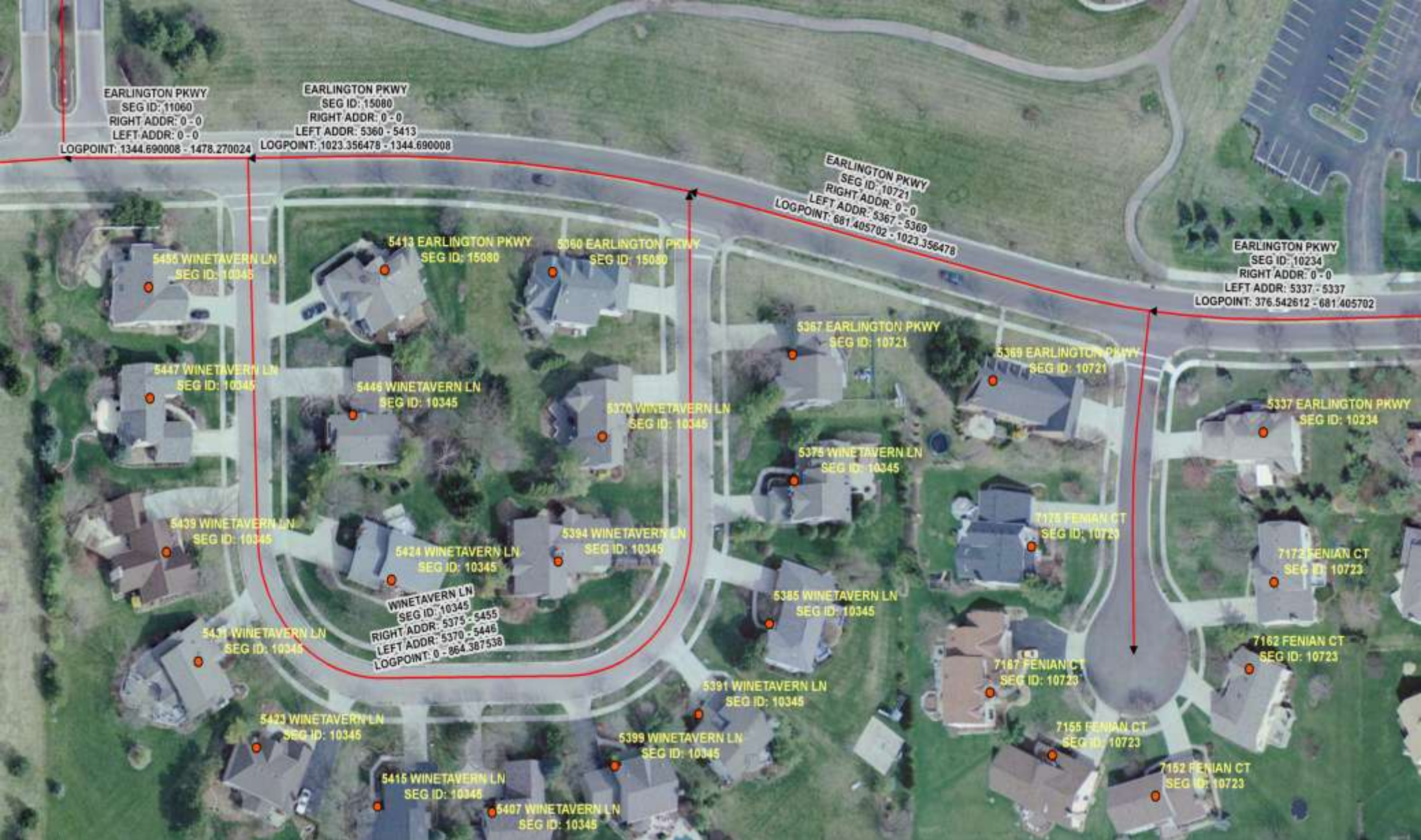
The screenshot displays the Transmap GIS Toolbox interface, which is integrated into ArcMap. The main window shows a 'Wednesday, Jan 30 2008 ADMIN Logged IN' session. The interface is divided into several panes:

- Claim Survey | Report:** This pane contains fields for 'Select Project' (FresnoDb), 'Select Phase' (Points Phase 1), and 'Select Survey' (07042004.001). It also includes buttons for 'Claim Survey', 'Survey Complete', and 'Claim QC'. Below these are 'QC Result' (Pass/Fail), 'QC Comment' (NONE), and 'QC Hours' (0.00). At the bottom, there are buttons for 'Need Survey ??', 'Need QC ??', and 'Survey History ??'. A list of surveys is shown, with '07042304.004' selected. A status bar at the bottom indicates '151 Surveys Remain To Be Claimed For Measurement'.
- Save Data : 573 Features:** This dialog box shows the 'Look in' directory (Documents) and a list of folders. The 'Name' field is set to 'TrackedLayer' and the 'Save as type' is 'Shapefile'. Buttons for 'Save' and 'Cancel' are visible.
- Mileage Breakdown: - All Users All Dates:** This dialog box displays the following data:
  - A Measure: 45.23 Miles
  - A Measure 2: 0.00 Miles
  - B Measure: 44.95 Miles
  - B Measure 2: 0.00 MilesTotal Centerline Miles Complete: 45.23  
Total Survey Miles Complete: 90.18  
An 'OK' button is at the bottom.
- FresnoDb Points Phase 1:** This is a map window showing a grid of survey points. A north arrow is in the top right corner. The map title is 'FresnoDb Points Phase 1'. The status bar at the bottom indicates 'Print Date: Wednesday, Jan 30 2008 02:51:41 PM' and 'Created by: ADMIN, TRANSMAP Corporation'. A legend is visible in the bottom right corner.

# Transmap<sup>®</sup> Project: GIS INTEGRATION

- GIS INTEGRATION is linking, merging, attaching and packaging of all data elements of a Transmap<sup>®</sup> Project to a GIS system. This process occurs through out most phases of a typical Transmap<sup>®</sup> project.

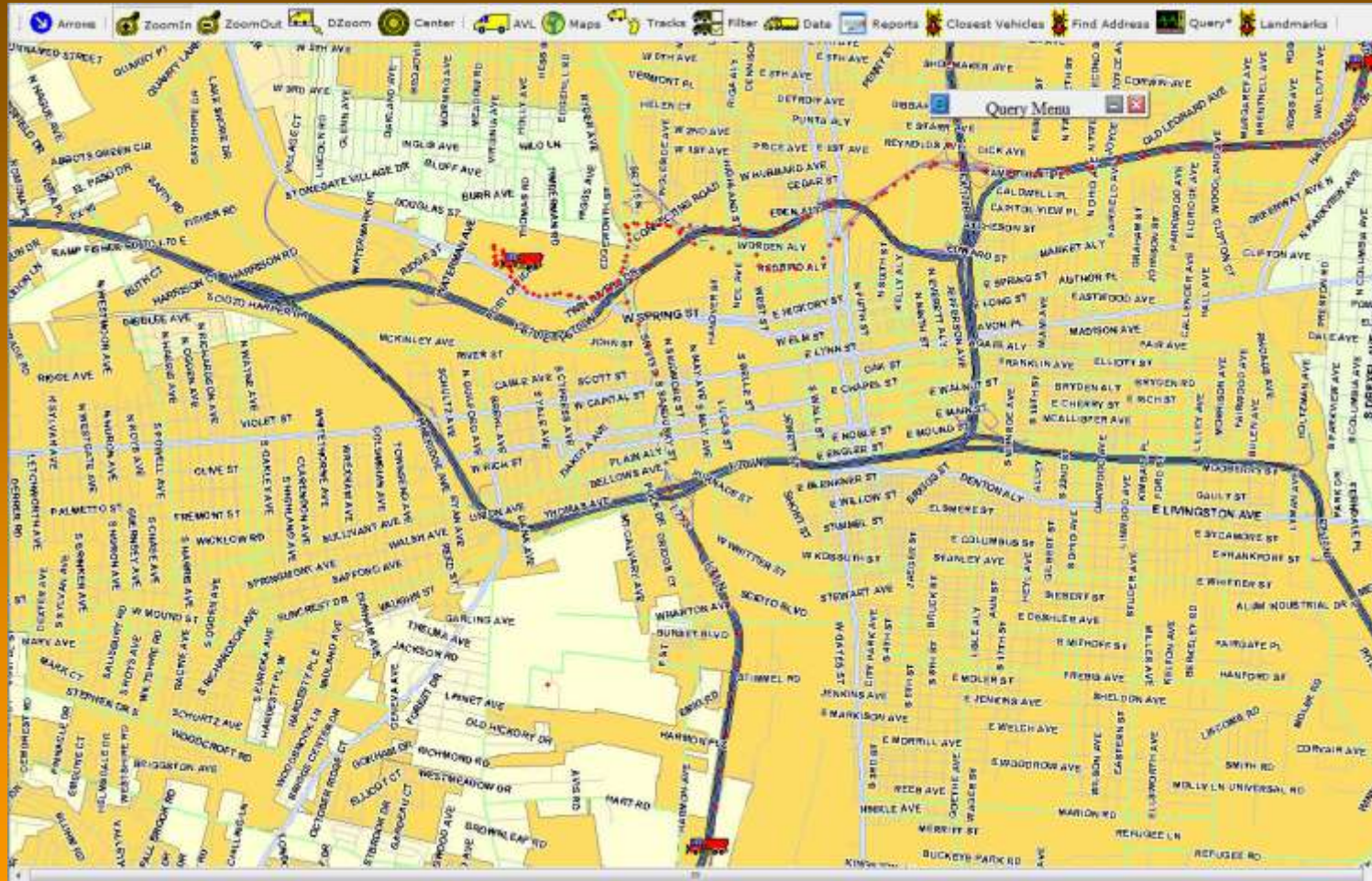








# Snow Plow Routing





# QUESTIONS?

Contact Info:

Craig Schorling, GISP  
Business Development Manager  
[cschorling@transmap.com](mailto:cschorling@transmap.com)

Transmap<sup>®</sup> Corporation  
<http://www.transmap.com>  
614.481.6799

