

Rehab or Replace – The Historians' Perspective on Winning Every Time

Patrick Harshbarger
TranSystems | Lichtenstein



HISTORY MATTERS

Is it possible to preserve the features of the bridge that give it historical significance?

The answer is different for different bridges but it all comes down to **understanding the bridge's historic context.**



Understanding Historical Significance is the First Step



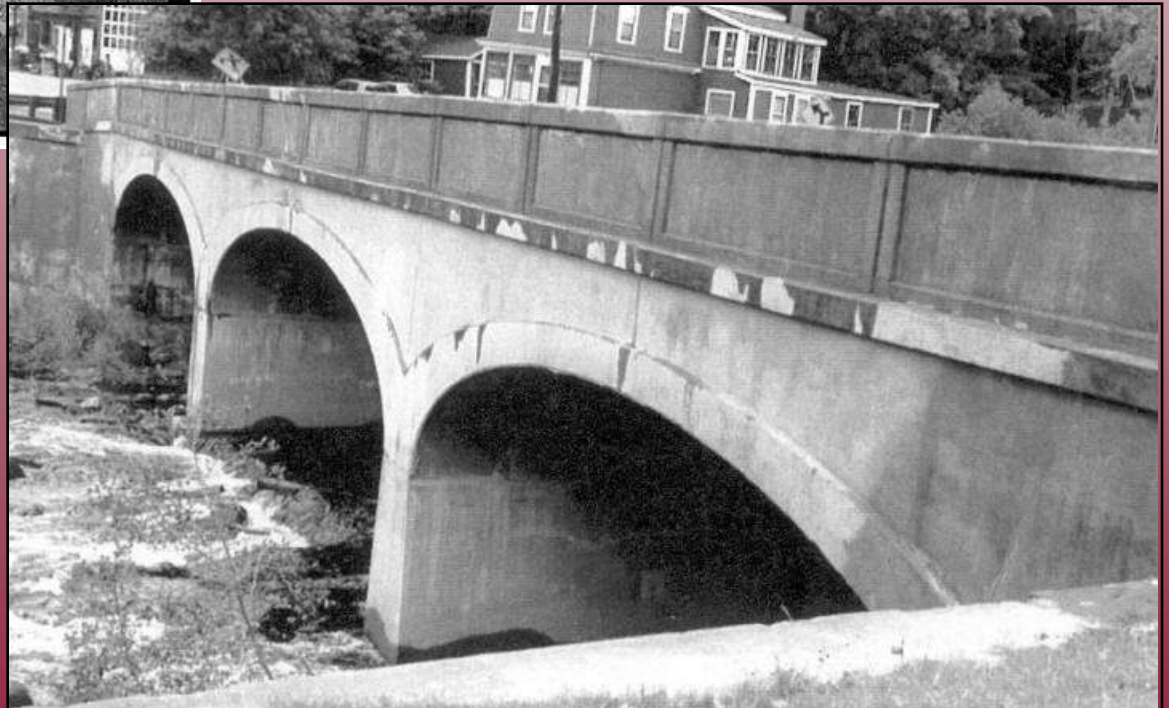
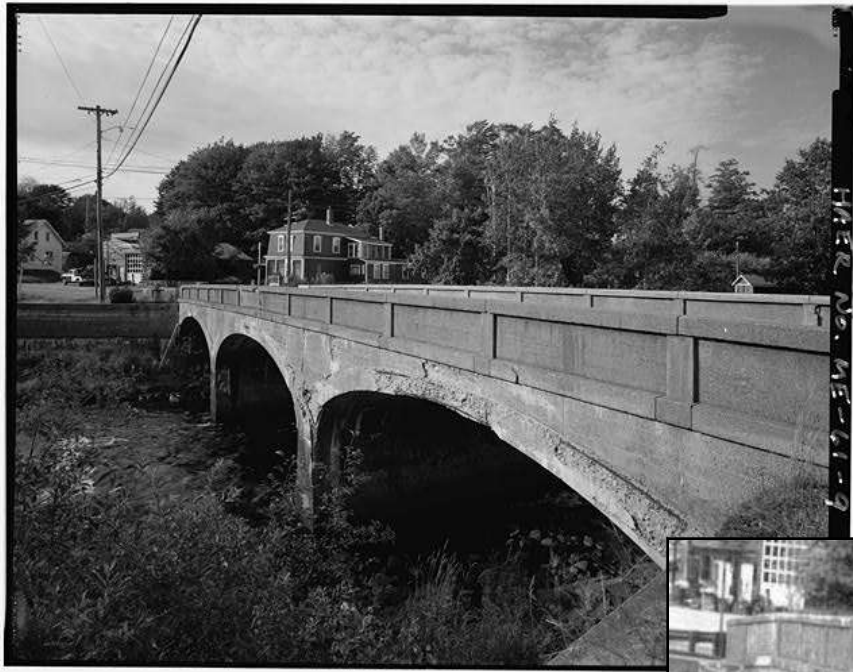
Arch with relieving slab



Relieving arch

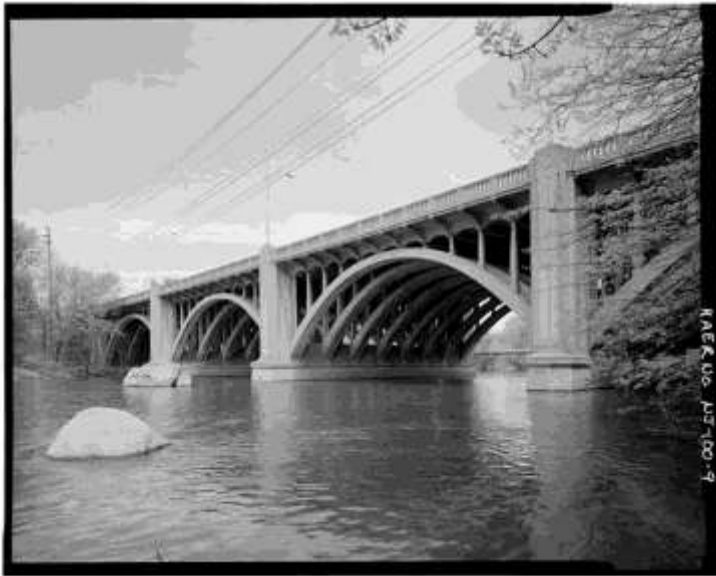














Before

After



U.S. Department
of the Interior
National Park
Service

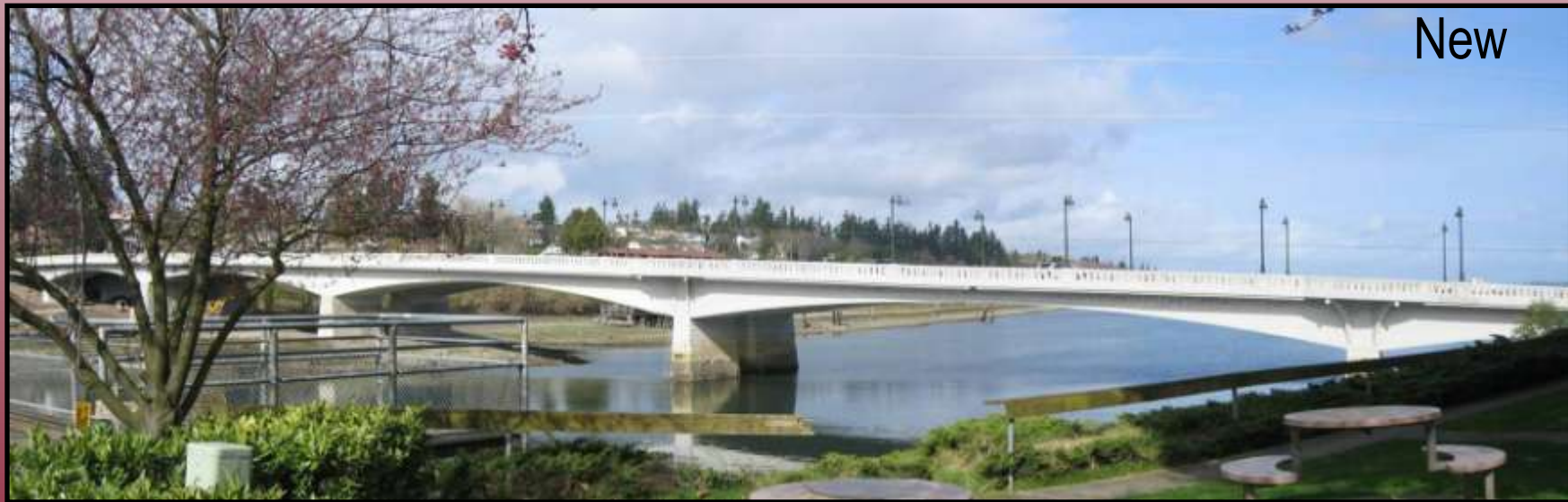
The Secretary of the Interior's
**Standards for
Rehabilitation**
and Guidelines for
Rehabilitating Historic Buildings

“Changes that create a false sense of historical development shall not be undertaken.”

“New construction shall be differentiated from the old and be compatible with the massing, size, and character” of the setting.

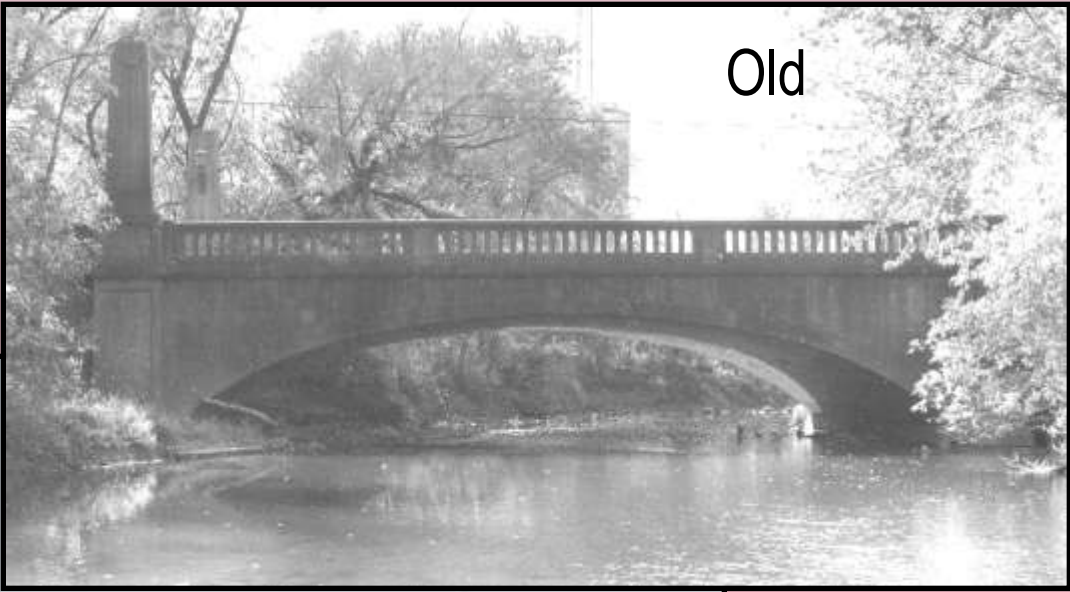


Old



New

TY Lin International Olympia-Yashiro Friendship Bridge, Olympia, WA



Old



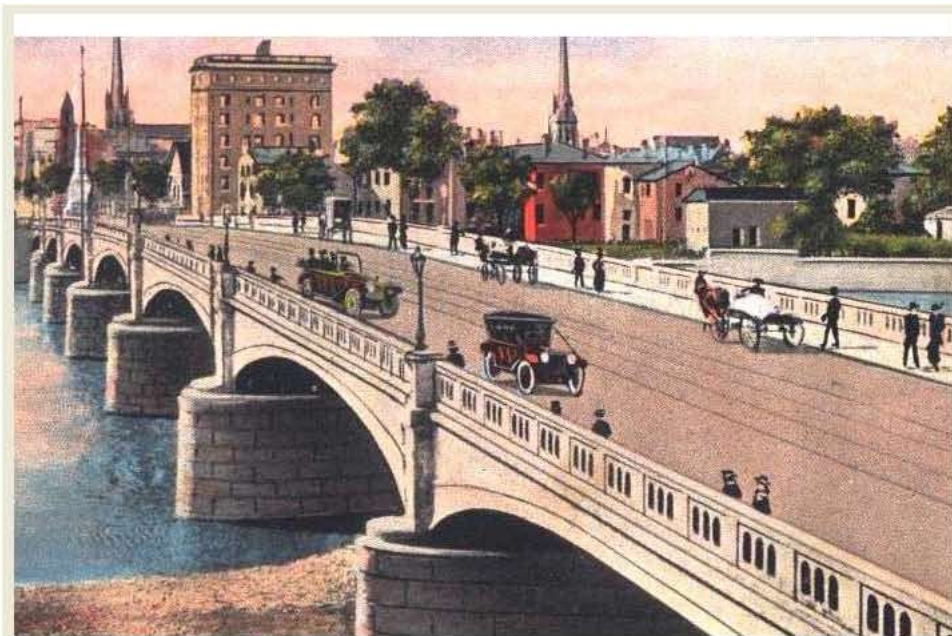
New



Ohio Historic Bridge Inventory Update

- Inventories all pre-1961 highway bridges for historic status
- 280 reinforced-concrete arch bridges statewide (about 3% of all bridges over 50 years old)
- 55 of 280 arches are eligible historic bridges

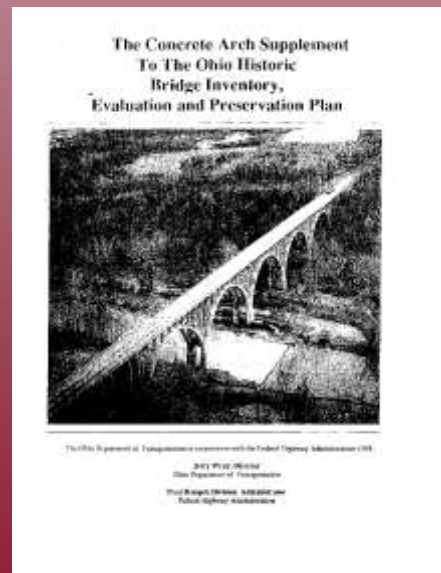
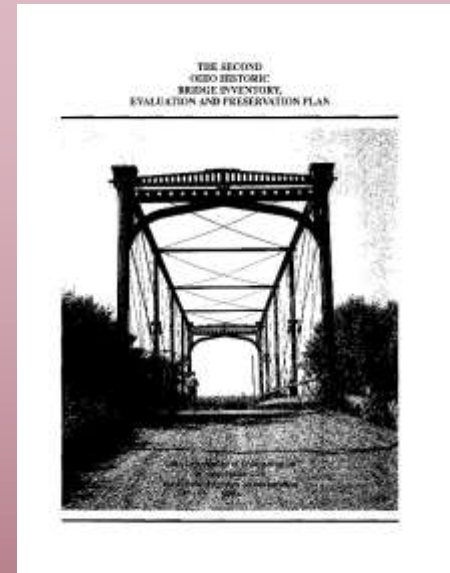
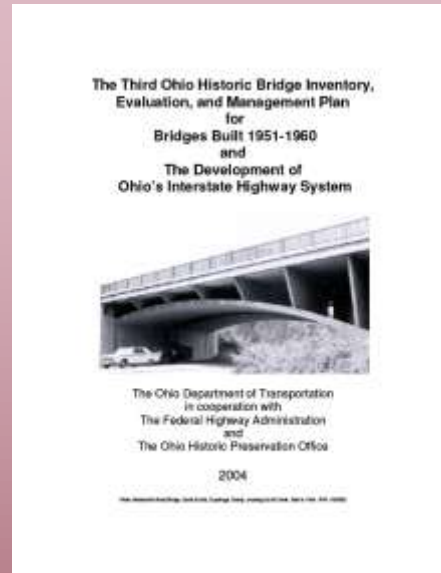
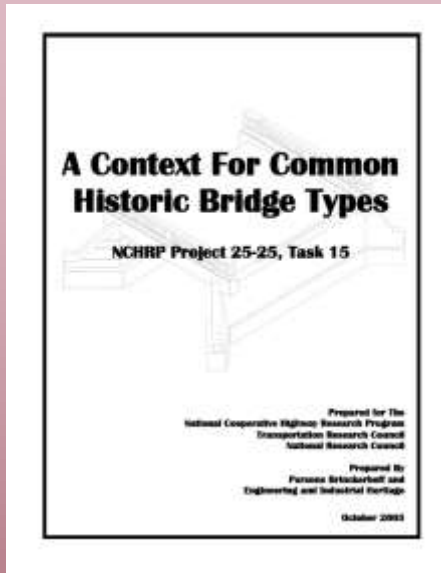
**OHIO DEPARTMENT OF TRANSPORTATION
OHBRIDGE DATABASE - VERSION 4.0**



Main Street Bridge, Dayton (postcard 1916)

Citizen Participation Includes Education about Historic Bridges & Listening to What the Public Values about Their Old Bridge

– Good Educational Resources Are on Hand





Old



New

THANK YOU!

Patrick Harshbarger

jpharshbarger@transystems.com

215.752.2206

