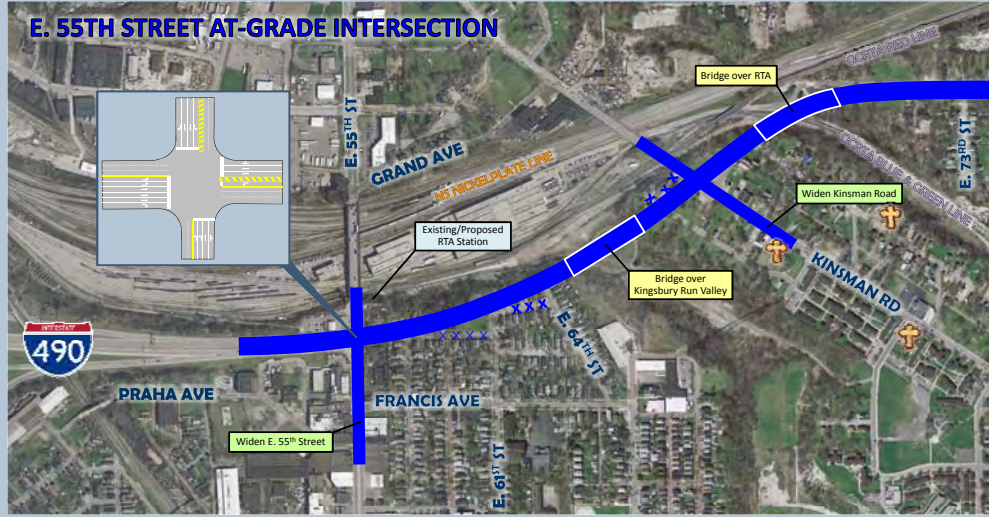
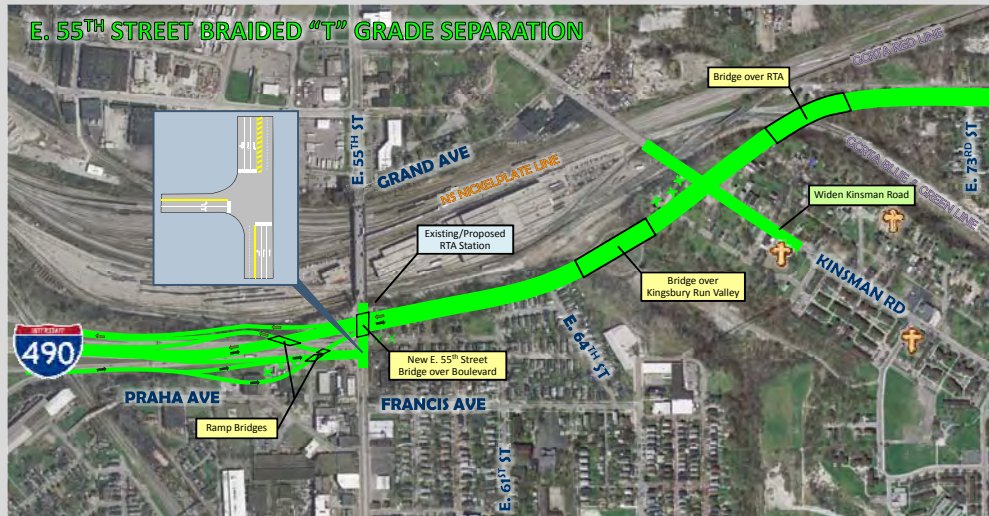


Alternate A



ALTERNATE A EVALUATION SUMMARY	
PURPOSE AND NEED CRITERIA	
Improve Mobility & Access	●
Connect University Circle to the Interstate Highway System	●
Support Planned Economic Development	●
IMPACT CRITERIA	
Natural Resources Impacts	●
Community Impacts	●
Historic/Parkland Impacts (Acres)	● (0)
Residential Displacements (Units)	● (58)
Church Displacements	● (0)
Commercial Business Displacements	● (3)
COST CRITERIA	
Estimated Probable Cost (2010 – in millions)	● (\$95.5)
RECOMMENDED FOR FURTHER STUDY?	YES

Alternate B



ALTERNATE B EVALUATION SUMMARY	
PURPOSE AND NEED CRITERIA	
Improve Mobility & Access	●
Connect University Circle to the Interstate Highway System	●
Support Planned Economic Development	●
IMPACT CRITERIA	
Natural Resources Impacts	●
Community Impacts	●
Historic/Parkland Impacts (Acres)	● (0)
Residential Displacements (Units)	● (48)
Church Displacements	● (0)
Commercial Business Displacements	● (6)
COST CRITERIA	
Estimated Probable Cost (2010 – in millions)	● (\$145.8)
RECOMMENDED FOR FURTHER STUDY?	NO

Alternate C



ALTERNATE C EVALUATION SUMMARY	
PURPOSE AND NEED CRITERIA	
Improve Mobility & Access	●
Connect University Circle to the Interstate Highway System	●
Support Planned Economic Development	●
IMPACT CRITERIA	
Natural Resources Impacts	●
Community Impacts	●
Historic/Parkland Impacts (Acres)	● (0)
Residential Displacements (Units)	● (77)
Church Displacements	● (0)
Commercial Business Displacements	● (3)
COST CRITERIA	
Estimated Probable Cost (2010 – in millions)	● (\$108.0)
RECOMMENDED FOR FURTHER STUDY?	YES

LEGEND

- Proposed or Widened Roadway
- Existing Intersecting Roadway
- Existing Roadway to be Removed
- Religious Structure
- Historic Structure

NORTH

KEY – RELATIVE POTENTIAL EFFECTS

- Adverse
-
-
-
- Beneficial

