

**APPENDIX A**

**GLOSSARY**

## GLOSSARY

**Note:** *The following contains simplified explanations of some regulatory/statutory definitions and other terms. If further explanation is needed, please contact ODOT's Office of Environmental Services.*

11-digit Hydrologic Unit Code (HUC): A watershed with a typical size of 40,000 to 250,000 acres, each 11-digit HUC is completely contained within one 8-digit HUC. The 11-digit HUC boundaries are delineated by USGS based on 1:24000 scale USGS topographic maps.

Appendix 6 Metropolitan Areas: Refers to Appendix 6 of the preamble for the federal Phase II storm water rules. It is a listing of places that were automatically designated as being regulated by Phase II. This includes all incorporated places and counties that are fully or partially located within an "urbanized area" according to the 1990 Census. An urbanized area is a land area comprising one or more places – central place(s) – and the adjacent densely settled surrounding area – urban fringe – that together have a residential population of at least 50,000 and an overall population density of at least 1,000 people per square mile. It is a calculation used by the Bureau of the Census to determine the geographic boundaries of the most heavily developed and dense urban areas. For ODOT's MS4 storm water outfall inventory, ODOT normalized urban areas (not Census urbanized areas) shall be used to define ODOT's MS4 regulated area for the Appendix 6 metropolitan areas.

Appendix 7 Cities: Refers to Appendix 6 of the preamble for the federal Phase II storm water rules. It is a listing of places that had the potential to be regulated into the Phase II storm water program. In 2005, these cities were informed by Ohio EPA that they were regulated. Appendix 7 is a listing of all incorporated places and counties, located outside of an "urbanized area" according to the Bureau of the Census, that have a population of at least 10,000 and a population density of at least 1,000 people per square mile. For ODOT's MS4 storm water outfall inventory, the limit of the MS4 regulated area for Appendix 7 cities is the municipal boundary. ODOT is not responsible for US and State routes within municipal boundaries, so Interstates are the only roadways to be inventoried for Appendix 7 cities.

Back Slope: The slope of the ground on the backside of the ditch described in a ratio (Run: Rise).

Bridge: ODOT's bridge inventory defined a bridge as: any structure, including supports, of 10 feet or more clear span or 10 feet or more (clear opening) in diameter on, above, or below a highway. The span of all bridges, except culverts regarded as bridges, was measured along the centerline of the highway. The culvert span(s) was measured normal to the axis of the culvert. Multiple cell culverts, under a fill, with a distance of 10 feet or more between extreme ends of openings, measured normal to the axis of the culvert, including multiple pipes where the clear distance between openings is less than half of the diameter of the smaller opening were regarded as a bridge and included the bridge inventory.

Base Highway Transportation Referencing System (BTRS): A system of information where the centerlines of the roadway system in Ohio have been delineated into segments 1/100<sup>th</sup> of mile (52.8 ft) in length. Each of these segments is assigned a number – a BTRS link number. This information has been integrated into ODOT's GIS and it serves as an important referencing tool.

Captured Stream: A drainage ditch constructed in an upland area that connects two surface waters of the State and maintains the surface water connection between those two surface waters of the State. The captured stream is generally considered to be a surface water of the State if it continually maintains the connection between the other two (upstream and downstream) surface waters of the State. Captured streams will generally carry water; however, they may be dry during certain times of the year.

Cardinal Direction of Travel: The cardinal direction of travel is based on roadway names (I-70, east/west or I-71, north/south) and not on the exact position of travel. Roads are oriented in a south to north or a west to east direction.

Ditch Outfall: For the purposes of ODOT's MS4 storm water outfall inventory, an outfall located at the end point of an open drainage feature, which is most commonly a ditch, but can also include a trench, trough, channel, or other similar feature.

Fore Slope: The slope of the ground from the road to the ditch described as a ratio (Run: Rise).

Illicit Discharge: Any discharge to a MS4 that is not entirely composed of storm water, except discharges authorized under an NPDES permit (other than the NPDES permit for discharges from the MS4) and discharges resulting from fire fighting activities.

Municipal Separate Storm Sewer System (MS4): A conveyance or system of conveyances (including roads with drainage systems, municipal streets, catch basins, curbs, gutters, ditches, man-made channels, or storm drains) that are: owned or operated by the federal government, state, municipality, township, county, district, or other public body (created by or pursuant to state or federal law) including special district under state law such as a sewer district, flood control district or drainage districts, or similar entity, or a designated and approved management agency under section 208 of the act that discharges into surface waters of the state and designed or used for collecting or conveying solely storm water, which is not a combined sewer, and which is not a part of a publicly owned treatment works.

Normalized Urban Areas: For project funding and management purposes, ODOT uses its functional classification system to designate areas as "urbanized" and has mechanisms to produce and routinely update mapping of these areas. These areas, known in ODOT as "normalized urban areas", define ODOT's MS4 regulated area for the "Appendix 6" metropolitan areas from the MS4 permit and consist of: 1) All urbanized areas as determined by the Census Bureau; 2) Additional areas based on local growth patterns and potential development; and 3) "Smoothing" of urbanized area boundary lines to reduce the amount of roads on the urban fringe where roads contain a mix of small urbanized and non-urbanized segments. Typically, these small, non-urbanized segments were designated as urbanized.

Network Linear Feature Identification (NLFID): A user designated naming system for a particular item. In this case the item would be a roadway. A 14-digit code has been established to represent all roadways in Ohio.

Outfall: For the purposes of ODOT's MS4 storm water outfall inventory, an "outfall" means the point at which any discernible, confined, and discrete conveyance of ODOT's storm sewer system discharges to surface waters of the State. Two types of outfalls will be inventoried: ditch outfalls and pipe outfalls.

Pipe Outfall: For the purposes of ODOT's MS4 storm water outfall inventory, an outfall located at the end point of a closed drainage feature, such as a pipe, culvert, or similar manufactured structure.

Quality Assurance: The process of assuring the quality of one organization's outcomes.

Quality Control: It encompasses procedures and techniques to verify the quality, accuracy, and consistency of digital products.

Spalling: The appearance of a concrete pipe to break up as if by chipping with a hammer.

Storm Water: Storm water runoff, snow melt runoff, and surface runoff and drainage.

Straight-Line Diagram: A two dimensional graphic representation of the physical roadway characteristics of a highway as if it had no turns or curves.

Straight-Line-Mileage: Mileage based on the centerline of the roadway as measured from the western or southern county line or other true beginning. All routes on the Interstate, U. S. and State Route systems are shown on straight-line diagrams.

Surface Waters of the State: All streams, lakes, reservoirs, ponds, marshes, wetlands, or other waterways which are situated wholly or partly within the boundaries of the State, except those private waters which do not combine or affect a junction with a surface water. Waters defined as sewerage systems, treatment works, or disposal systems in Section 6111.01 of the ORC are not included.

Turbidity: Murkiness or cloudiness of water, indicating the presence of some suspended sediments, dissolved solids, etc. .

Watershed: The area of land where all of the water that is under it or drains off of it goes into the same place

**APPENDIX C**

**ODOT DISTRICT MAP AND  
CONTACT INFORMATION**

# Ohio Department of Transportation Districts



## District 1

1885 N. McCullough St.  
Lima, OH 45801-0040  
419-222-9055  
fax: 419-222-0438

## District 2

317 East Poe Rd.  
Bowling Green, OH 43402-1330  
419-353-8131  
fax: 419-353-1468

## District 3

906 North Clark St.  
Ashland, OH 44805-1989  
800-276-4188 or 419-281-0513  
fax: 419-281-0874

## District 4

2088 S. Arlington Rd.  
Akron, OH 44306  
800-603-1054 or 330-786-3100  
fax: 330-786-2232

## District 5

9600 Jacksontown Rd., S.E.  
PO Box 306  
Jacksontown, OH 43030  
740-323-4400  
fax: 740-323-3715

## District 6

400 East William St.  
Delaware, OH 43015  
800-372-7714 or 740-363-1251  
fax: 740-369-7437

## District 7

1001 St. Marys Ave.  
SR 29 PO Box 969  
Sidney, OH 45365-0969  
937-492-1141  
fax: 937-497-9734

## District 8

505 South SR 741  
Lebanon, OH 45036-9518  
800-831-2142 or 513-932-3030  
fax: 513-932-7651

## District 9

650 Eastern Ave. PO Box 467  
Chillicothe, OH 45601  
740-773-2691  
fax: 740-775-4889

## District 10

338 Muskingum Dr. PO Box 658  
Marietta, OH 45750  
800-845-0226 or 740-373-0212  
fax: 740-373-7317

## District 11

2201 Reiser Ave.  
New Philadelphia, OH 44663  
330-339-6633  
fax: 330-308-3942

## District 12

5500 Transportation Blvd.  
Garfield Heights, OH 44125-5396  
866-737-8112 or 216-581-2100  
fax: 216-587-1730

## Central Office

1980 W. Broad Street  
Columbus, OH 43223  
614-466-7170  
fax: 614-644-8662

## ODOT Web Site:

<http://www.dot.state.oh.us>

**APPENDIX D**

**ODOT MS4 REGULATED AREA  
MAPPING**

The most recent maps of ODOT's MS4 regulated area can be viewed at:

[http://www.dot.state.oh.us/oes/ms4\\_datasets.htm](http://www.dot.state.oh.us/oes/ms4_datasets.htm)

**APPENDIX E**

**MILEAGE TABLES FOR  
ODOT'S MS4 REGULATED AREA**

**Regulated Facilities and Highway Mileage for District 1, by County and Route Number.**

District	County	District office	Garage	Outpost	Rest Area	IR Route	IR Miles	US Route	US Miles	SR Route	SR Miles	
1	Allen	1	1	1		75	11.25			65	2.42	
										81	5.72	
										115	0.41	
										117	6.73	
										309	7.78	
										501	2.34	
	<i>Allen total</i>	<i>1</i>	<i>1</i>	<i>1</i>	<i>0</i>		<i>11.25</i>		<i>0.00</i>			<i>25.41</i>
	Defiance		1									
	<i>Defiance total</i>	<i>0</i>	<i>1</i>	<i>0</i>	<i>0</i>		<i>0.00</i>		<i>0.00</i>			<i>0.00</i>
	Hancock		1	1			75	3.89				
	<i>Hancock total</i>	<i>0</i>	<i>1</i>	<i>1</i>	<i>0</i>		<i>3.89</i>		<i>0.00</i>			<i>0.00</i>
	Hardin											
	<i>Hardin total</i>	<i>0</i>	<i>0</i>	<i>0</i>	<i>0</i>		<i>0.00</i>		<i>0.00</i>			<i>0.00</i>
	Paulding											
	<i>Paulding total</i>	<i>0</i>	<i>0</i>	<i>0</i>	<i>0</i>		<i>0.00</i>		<i>0.00</i>			<i>0.00</i>
	Putnam											
	<i>Putnam total</i>	<i>0</i>	<i>0</i>	<i>0</i>	<i>0</i>		<i>0.00</i>		<i>0.00</i>			<i>0.00</i>
	Van Wert											
	<i>Van Wert total</i>	<i>0</i>	<i>0</i>	<i>0</i>	<i>0</i>		<i>0.00</i>		<i>0.00</i>			<i>0.00</i>
	Wyandot											
<i>Wyandot total</i>	<i>0</i>	<i>0</i>	<i>0</i>	<i>0</i>		<i>0.00</i>		<i>0.00</i>			<i>0.00</i>	
<i>Total D1</i>		<i>1</i>	<i>3</i>	<i>2</i>	<i>0</i>		<i>15.14</i>		<i>0</i>		<i>25.41</i>	

**Regulated Facilities and Highway Mileage for District 2, by County and Route Number.**

District	County	District office	Garage	Outpost	Rest Area	IR Route	IR Miles	US Route	US Miles	SR Route	SR Miles	
2	<b>Fulton</b>										0.00	
	<b>Fulton total</b>	0	0	0	0		0.00		0.00		0.00	
	<b>Henry</b>											
	<b>Henry total</b>	0	0	0	0		0.00		0.00		0.00	
	<b>Lucas</b>			1			75	11.87	20	13.50	2	8.71
							280	7.92	23	1.22	51	1.36
							475	16.48	24	3.99	64	2.86
											120	1.76
											184	1.18
											295	0.02
	<b>Lucas total</b>	0		1	0	0		36.27		18.73		15.88
	<b>Ottawa</b>										51	2.48
											579	3.02
											795	0.71
	<b>Ottawa total</b>	0		0	0	0		0.00		0.00		6.21
	<b>Sandusky</b>											
	<b>Sandusky total</b>	0		0	0	0		0.00		0.00		0.00
	<b>Seneca</b>											
	<b>Seneca total</b>	0		0	0	0		0.00		0.00		0.00
	<b>Williams</b>											
	<b>Williams total</b>	0		0	0	0		0.00		0.00		0.00
	<b>Wood</b>		1		1		75	9.08	20	1.82	51	3.38
							280	4.35			65	5.84
							475	3.90			199	0.68
											579	0.16
											795	8.22
	<b>Wood total</b>	1		0	1	0		17.33		1.82		18.28
<b>Total D2</b>		1	1	1	0		53.60		20.55		43.32	

**Regulated Facilities and Highway Mileage for District 3, by County and Route Number.**

District	County	District office	Garage	Outpost	Rest Area	IR Route	IR Miles	US Route	US Miles	SR Route	SR Miles
3	Ashland	1	1					42	0.01		
								250	0.01		
	<b>Ashland total</b>	1	1	0	0		0.00		0.02		0.00
	Crawford		1							4	0.00
										19	0.02
										181	0.01
										598	0.01
	<b>Crawford total</b>	0	1	0	0		0.00		0.00		0.05
	Erie		0	1				6	9.29	2	10.22
								250	4.20	4	1.08
										13	0.03
										60	0.84
										101	5.43
										113	0.01
										269	0.55
	<b>Erie total</b>	0	0	1	0		0.00		13.48		18.16
	Huron							224	0.01	61	0.02
								250	0.01	113	0.00
										269	0.04
										598	0.01
	<b>Huron total</b>	0	0	0	0		0.00		0.02		0.06
	Lorain		1	1	1	90	13.88	20	4.85	2	4.82
						480	2.22			10	2.35
										57	7.83
										58	6.67
										82	10.02
										83	6.47
										113	7.64
										252	5.42
										254	2.83
										301	6.32
										511	4.15
	<b>Lorain total</b>	0	1	1	1		16.10		4.85		64.52
	Medina				1	71	4.27	42	1.46	3	0.02
						76	3.68			18	0.02
										57	0.90
										94	1.94
										252	2.88
										261	1.49
										303	3.44
	<b>Medina total</b>	0	0	0	1		7.95		1.46		10.70

**Regulated Facilities and Highway Mileage for District 3, by County and Route Number.**

District	County	District office	Garage	Outpost	Rest Area	IR Route	IR Miles	US Route	US Miles	SR Route	SR Miles
	<b>Richland</b>		1		1	71	8.49	30	9.99	13	2.23
								42	8.50	39	4.20
										61	0.02
										96	0.00
										97	2.46
										98	0.01
										309	4.84
										314	2.22
										430	5.21
										545	0.99
										546	0.55
	<b>Richland total</b>	0	1	0	1		8.49	72	18.49	2548	22.72
	<b>Wayne</b>									21	4.47
										585	2.81
	<b>Wayne total</b>	0	0	0	0		0.00		0.00		7.29
<b>Total D3</b>		1	4	2	3		32.54		38.24		123.38

**Regulated Facilities and Highway Mileage for District 4, by County and Route Number.**

District	County	District office	Garage	Outpost	Rest Area	IR Route	IR Miles	US Route	US Miles	SR Route	SR Miles
4	Ashtabula		1								
	<b>Ashtabula total</b>	0	1	0	0		0.00		0.00		0.00
	<b>Mahoning</b>		1	1		80	3.30	62	3.27	7	1.03
						680	14.94	224	8.21	11	5.30
										45	0.01
										46	3.27
										164	1.58
										170	3.73
										289	0.31
										446	0.38
										616	0.79
										625	0.02
										626	1.26
										630	0.53
	<b>Mahoning total</b>	0	1	1	0		18.25		11.49		18.22
	<b>Portage</b>	1		3		76	6.08	224	3.85	5	8.64
						480	2.17			14	4.30
										43	4.35
										44	0.36
										59	4.52
										88	0.43
										261	2.93
	<b>Portage total</b>	1	0	3	0		8.25		3.85		25.55
	<b>Stark</b>		1	1		77	15.43	30	11.90	21	2.60
								62	7.25	43	9.38
										44	5.26
										93	2.54
										153	2.39
										172	3.53
										236	7.33
										241	8.17
										297	1.40
										619	3.52
										627	4.77
										687	5.55
										800	4.43
	<b>Stark total</b>	0	1	1	0		15.43		19.15		60.86

**Regulated Facilities and Highway Mileage for District 4, by County and Route Number.**

District	County	District office	Garage	Outpost	Rest Area	IR Route	IR Miles	US Route	US Miles	SR Route	SR Miles
	<b>Summit</b>		1		1	76	18.01	224	3.74	8	2.44
						77	30.68			18	2.46
						271	7.32			21	4.31
						277	4.19			82	3.78
						480	8.64			91	1.30
										93	7.62
										162	5.72
										176	0.40
										236	0.34
										241	2.17
										261	0.02
										303	0.22
										532	0.87
										585	0.04
										619	1.46
	<b>Summit total</b>	<i>0</i>	<i>1</i>	<i>0</i>	<i>1</i>		<i>68.84</i>		<i>3.74</i>		<i>33.17</i>
	<b>Trumbull</b>		1	2		80	10.29	62	5.05	5	18.19
								422	1.88	7	2.92
										11	3.91
										45	2.87
										46	4.50
										82	4.31
										169	0.99
										193	3.26
										304	4.55
										305	1.96
										534	0.44
										616	0.17
										711	0.58
	<b>Trumbull total</b>	<i>0</i>	<i>1</i>	<i>2</i>	<i>0</i>		<i>10.29</i>		<i>6.93</i>		<i>48.66</i>
<b>4 Total</b>		<b>1</b>	<b>5</b>	<b>7</b>	<b>1</b>		<b>121.05</b>		<b>45.15</b>		<b>186.46</b>

**Regulated Facilities and Highway Mileage for District 5, by County and Route Number.**

District	County	District office	Garage	Outpost	Rest Area	IR Route	IR Miles	US Route	US Miles	SR Route	SR Miles
5	<b>Coshocton</b>										
	<b>Coshocton total</b>	0	0	0	0		0.00				0.00
	<b>Fairfield</b>		1			70	2.37	33	1.20	37	< 0.01
										188	< 0.01
										204	5.34
										256	1.19
										360	1.73
	<b>Fairfield total</b>	0	1	0	0		2.37		1.20		8.27
	<b>Guernsey</b>		1			70	0.02				
	<b>Guernsey total</b>	0	1	0	0		0.02		0.00		0.00
	<b>Knox</b>								36	0.01	
	<b>Knox total</b>	0	0	0	0		0.00		0.01		0.00
	<b>Licking</b>		1	2		70	5.95	40	7.19	13	3.59
										16	8.38
										37	0.20
										79	9.57
										157	2.53
										310	1.63
										360	0.21
										657	1.95
										661	1.65
	<b>Licking total</b>	0	1	2	0		5.95		7.19		29.69
	<b>Muskingum</b>						70	2.20			
	<b>Muskingum total</b>	0	0	0	0		2.20		0.00		0.00
	<b>Perry</b>										
	<b>Perry total</b>	0	0	0	0		0.00		0.00		0.00
	<b>Total D5</b>		0	3	2	0		10.54		8.39	

**Regulated Facilities and Highway Mileage for District 6, by County and Route Number.**

District	County	District office	Garage	Outpost	Rest Area	IR Route	IR Miles	US Route	US Miles	SR Route	SR Miles	
6	Delaware	1	1			71	4.34	23	4.46	3	2.37	
										257	4.34	
										315	4.11	
										745	2.16	
										750	6.72	
	<b>Delaware total</b>	<b>1</b>	<b>1</b>	<b>0</b>	<b>0</b>		<b>4.34</b>		<b>4.46</b>			<b>19.70</b>
	Franklin	1	1	3		70	24.98	23	3.07	3	2.02	
						71	24.05	33	5.59	16	0.40	
						270	54.99	40	7.30	104	5.76	
						670	10.58	62	11.45	161	5.38	
										256	0.40	
										257	0.04	
										315	2.39	
										317	7.66	
										605	3.16	
										665	4.94	
										674	3.30	
										710	0.64	
	<b>Franklin total</b>	<b>1</b>	<b>1</b>	<b>3</b>	<b>0</b>		<b>114.59</b>		<b>27.40</b>			<b>36.09</b>
	Fayette											
	<b>Fayette total</b>	<b>0</b>	<b>0</b>	<b>0</b>	<b>0</b>		<b>0.00</b>		<b>0.00</b>			<b>0.00</b>
	Madison						70	0.01	40	0.14		
	<b>Madison total</b>	<b>0</b>	<b>0</b>	<b>0</b>	<b>0</b>		<b>0.01</b>		<b>0.14</b>			<b>0.00</b>
	Marion			1								
	<b>Marion total</b>	<b>0</b>	<b>1</b>	<b>0</b>	<b>0</b>		<b>0.00</b>		<b>0.00</b>			<b>0.00</b>
	Morrow											
	<b>Morrow total</b>	<b>0</b>	<b>0</b>	<b>0</b>	<b>0</b>		<b>0.00</b>		<b>0.00</b>			<b>0.00</b>
Pickaway			1					23	0.81	104	< 0.01	
										316	2.76	
										752	2.31	
<b>Pickaway total</b>	<b>0</b>	<b>0</b>	<b>0</b>	<b>0</b>		<b>0.00</b>		<b>0.81</b>			<b>5.07</b>	
Union			1									
<b>Union total</b>	<b>0</b>	<b>1</b>	<b>0</b>	<b>0</b>		<b>0.00</b>		<b>0.00</b>			<b>0.00</b>	
<b>Total D6</b>		<b>2</b>	<b>5</b>	<b>3</b>	<b>0</b>		<b>118.94</b>		<b>32.80</b>		<b>60.87</b>	

**Regulated Facilities and Highway Mileage for District 7, by County and Route Number.**

District	County	District office	Garage	Outpost	Rest Area	IR Route	IR Miles	US Route	US Miles	SR Route	SR Miles
7	Auglaize					75	0.68		0.00		0.00
	<b>Auglaize total</b>	0	0	0	0		0.68		0.00		0.00
	Clark		1			70	11.37	40	7.33	4	2.65
								68	5.52	41	6.69
										72	3.19
										235	2.58
										334	1.50
										369	0.01
	<b>Clark total</b>	0	1	0	0		11.37		12.85		16.62
	Champaign		1				0.00		0.00		0.00
	<b>Champaign total</b>	0	1	0	0		0.00		0.00		0.00
	Darke		1								
	<b>Darke total</b>	0	1	0	0		0.00		0.00		0.00
	Logan	0	1	1	0						
	<b>Logan total</b>	0	1	1	0		0.00		0.00		0.00
	Mercer										
	<b>Mercer total</b>	0	0	0	0		0.00		0.00		0.00
	Miami		1			75	13.14	40	2.00	41	0.35
										48	4.25
										55	0.86
										202	0.90
										571	4.10
										718	2.01
	<b>Miami total</b>	0	1	0	0		13.14		2.00		12.46
	Montgomery		1		0	70	21.46	35	3.38	4	5.13
						75	24.38	40	2.24	48	6.26
						675	7.48			49	2.17
										235	0.04
										725	7.94
										741	4.77
	<b>Montgomery Total</b>	0	1	0	0		53.31		5.62		26.32
	Shelby	1	1			75	2.98				
	<b>Shelby Total</b>	1	1	0	0		2.98		0.00		0.00
<b>Total D7</b>		1	7	3	0		81.49		20.46		56.33

**Regulated Facilities and Highway Mileage for District 8, by County and Route Number.**

District	County	District office	Garage	Outpost	Rest Area	IR Route	IR Miles	US Route	US Miles	SR Route	SR Miles
8	Butler		1	1	2	75	11.24	27	2.04	4	13.56
								42	3.32	63	0.70
								127	5.65	73	1.76
										122	0.10
										126	1.07
										128	0.68
										129	11.99
										503	0.34
										747	8.71
	<b>Butler total</b>	0	1	1	2		11.24		11.01		38.92
	Clermont			1		275	13.88	50	4.53	28	7.12
								52	0.14	32	12.33
										48	4.91
										125	11.01
										126	2.14
										131	5.10
										132	15.52
										222	3.16
										276	0.82
										749	3.14
	<b>Clermont total</b>	0	0	1	0		13.88		4.68		65.25
	Clinton		1								
	<b>Clinton total</b>	0	1	0	0		0.00		0.00		0.00
	Greene		1	1		675	17.66	35	6.86	4	3.02
								42	1.68	235	2.09
								68	0.71	380	0.36
										444	4.80
										725	0.50
										844	0.25
	<b>Greene total</b>	0	1	1			17.66		9.25		11.02
	Hamilton		1	2		71	19.89	22	6.35	4	2.73
						74	19.49	27	6.77	32	6.16
						75	17.21	42	2.15	125	3.76
						275	33.14	50	11.00	126	9.15
						471	0.74	52	4.88	128	0.74
								127	4.79	264	6.98
										747	0.95
	<b>Hamilton total</b>	0	1	2			90.47		35.94		30.47

**Regulated Facilities and Highway Mileage for District 8, by County and Route Number.**

District	County	District office	Garage	Outpost	Rest Area	IR Route	IR Miles	US Route	US Miles	SR Route	SR Miles
	Warren	1	1	1		71	5.86	22	7.12	48	14.00
						75	12.19	42	3.95	63	2.32
										73	4.44
										122	2.24
										123	2.80
										741	2.87
	<b>Warren total</b>	<b>1</b>	<b>1</b>	<b>1</b>	<b>0</b>		<b>18.05</b>		<b>11.07</b>		<b>28.68</b>
<b>Total D8</b>		<b>1</b>	<b>5</b>	<b>6</b>	<b>2</b>		<b>151.30</b>		<b>71.95</b>		<b>174.34</b>

**Regulated Facilities and Highway Mileage for District 9, by County and Route Number.**

District	County	District office	Garage	Outpost	Rest Area	IR Route	IR Miles	US Route	US Miles	SR Route	SR Miles
9	<b>Adams</b>										
	<b>Adams total</b>	0	0	0	0		0.00		0.00		0.00
	<b>Brown</b>										
	<b>Brown total</b>	0	0	0	0		0.00		0.00		0.00
	<b>Highland</b>										
	<b>Highland total</b>	0	0	0	0		0.00		0.00		0.00
	<b>Jackson</b>										
	<b>Jackson total</b>	0	0	0	0		0.00		0.00		0.00
	<b>Lawrence</b>		1	1				52	19.13	7	19.04
										93	0.92
										141	0.17
										243	6.47
										527	0.57
										607	0.59
										650	0.29
										775	2.29
	<b>Lawrence total</b>	0	1	1	0		0.00		19.13		30.33
	<b>Pike</b>										
	<b>Pike total</b>	0	0	0	0		0.00		0.00		0.00
	<b>Ross</b>										
	<b>Ross total</b>	0	0	0	0		0.00		0.00		0.00
	<b>Scioto</b>										
	<b>Scioto total</b>	0	0	0	0		0.00		0.00		0.00
<b>Total D9</b>		0	1	1	0		0.00		19.13		30.33

**Regulated Facilities and Highway Mileage for District 10, by County and Route Number.**

District	County	District office	Garage	Outpost	Rest Area	IR Route	IR Miles	US Route	US Miles	SR Route	SR Miles
10	Athens										
	<b>Athens total</b>	0	0	0	0		0.00		0.00		0.00
	Gallia										
	<b>Gallia total</b>	0	0	0	0		0.00		0.00		0.00
	Hocking										
	<b>Hocking total</b>	0	0	0	0		0.00		0.00		0.00
	Meigs										
	<b>Meigs total</b>	0	0	0	0		0.00		0.00		0.00
	Monroe										
	<b>Monroe total</b>	0	0	0	0		0.00		0.00		0.00
	Morgan										
	<b>Morgan total</b>	0	0	0	0		0.00		0.00		0.00
	Noble										
	<b>Noble total</b>	0	0	0	0		0.00		0.00		0.00
	Vinton										
	<b>Vinton total</b>	0	0	0	0		0.00		0.00		0.00
	Washington	1	1		1	77	3.35	50	1.56	7	4.37
										60	0.75
										550	2.63
										618	1.17
									676	0.69	
									821	0.02	
	<b>Washington total</b>	1	1	0	1		3.35		1.56		9.64
<b>Total D10</b>		1	1	0	1		3.35		1.56		9.64

**Regulated Facilities and Highway Mileage for District 11, by County and Route Number.**

District	County	District office	Garage	Outpost	Rest Area	IR Route	IR Miles	US Route	US Miles	SR Route	SR Miles	
11	<i>Belmont</i>			1		70	9.93	40	7.38	7	8.22	
						470	0.46	250	2.62	9	0.88	
										147	1.23	
										149	1.72	
										647	0.96	
	<b><i>Belmont total</i></b>	<i>0</i>	<i>0</i>	<i>1</i>	<i>0</i>		<i>10.39</i>		<i>10.00</i>			<i>13.01</i>
	<b>Carroll</b>											
	<b><i>Carroll total</i></b>	<i>0</i>	<i>0</i>	<i>0</i>	<i>0</i>		<i>0.00</i>		<i>0.00</i>			<i>0.00</i>
	<b>Columbiana</b>											
	<b><i>Columbiana total</i></b>	<i>0</i>	<i>0</i>	<i>0</i>	<i>0</i>		<i>0.00</i>		<i>0.00</i>			<i>0.00</i>
	<b>Harrison</b>											
	<b><i>Harrison total</i></b>	<i>0</i>	<i>0</i>	<i>0</i>	<i>0</i>		<i>0.00</i>		<i>0.00</i>			<i>0.00</i>
	<b>Holmes</b>											
	<b><i>Holmes total</i></b>	<i>0</i>	<i>0</i>	<i>0</i>	<i>0</i>		<i>0.00</i>		<i>0.00</i>			<i>0.00</i>
	<b>Jefferson</b>			1	2				22	11.64	7	13.83
											43	1.74
											150	0.55
											151	0.72
											152	2.38
											213	2.02
										646	1.18	
										822	0.31	
<b><i>Jefferson total</i></b>	<i>0</i>	<i>1</i>	<i>2</i>	<i>0</i>		<i>0.00</i>		<i>11.64</i>			<i>22.72</i>	
<b>Tuscarawas</b>					1	77	0.62		0.00		0.00	
<b><i>Tuscarawas total</i></b>	<i>0</i>	<i>0</i>	<i>0</i>	<i>1</i>		<i>0.62</i>		<i>0.00</i>			<i>0.00</i>	
<b>Total D11</b>		<b>0</b>	<b>1</b>	<b>3</b>	<b>1</b>		<b>11.01</b>		<b>21.65</b>		<b>35.74</b>	

**Regulated Facilities and Highway Mileage for District 12, by County and Route Number.**

District	County	District office	Garage	Outpost	Rest Area	IR Route	IR Miles	US Route	US Miles	SR Route	SR Miles
12	<b>Ashtabula</b>										
	<b>Ashtabula total</b>	0	0	0	0		0.00		0		0.00
	<b>Cuyahoga</b>	1	1	4		71	19.16	6	0.14	3	0.00
						77	16.04	322	2.59	8	3.11
						90	30.22	422	1.02	14	0.37
						271	16.66			17	2.42
						480	29.07			21	0.55
						490	2.55			43	0.35
										82	0.00
										87	3.75
										91	5.07
										94	0.03
										174	3.82
										175	0.71
										176	0.00
										252	0.66
										283	0.40
	<b>Cuyahoga total</b>	1	1	4	0		113.70		3.75		21.26
	<b>Geauga</b>							6	6.08	43	0.90
								322	6.10	44	7.84
								422	6.15	87	6.18
										306	15.48
	<b>Geauga total</b>	0	0	0	0		0.00		18.33		30.40
	<b>Lake</b>		1		2	90	21.65	20	15.12	2	3.89
						271	1.74			44	7.00
										84	13.73
										86	3.57
										91	0.01
										174	0.02
										283	3.20
										307	0.85
										528	3.29
										535	4.78
										608	0.91
										615	1.04
	<b>Lake total</b>	0	1	0	2		23.40		15.12		42.29
<b>Total D3</b>		1	2	4	2		137.10		37.20		93.95

**APPENDIX F**

**EXAMPLE PERMIT TO WORK  
WITHIN ODOT RIGHT OF WAY**

RECEIVED  
JUN 23 2004  
DLZ OHIO, INC

MR. 509  
Permit No.  
06-0400-04

Office Use Only  
County or  
Jurisdiction FRA  
Rte 670 Log Pt 0000  
Acc Cat

**State of Ohio  
Department of Transportation  
Permit**

[1] Subject to all terms, conditions, and restrictions printed, written below and on the reverse side hereof, or attached,

Name: DLZ Ohio Inc. Address: 6121 Huntley Road, Columbus, OH 43229 Is hereby granted a permit under Section 5515.01 and 5515.02 of Ohio Revised Code, and permission to perform work necessary in the manner described and at the location indicated attached to this permit.

**Traffic Control (see attached sheet)**

**Location: FRA County I-670, I-670 from I-70 to I-71 north and south side of Road.**

[2] This permit shall be in the possession of employees on site at all times who are in charge of the work and shall be shown, upon request, to any employee of the Department of Transportation.

Contact County Manager 10 days before work begins, also contact County Manager when work is completed for final inspection.

[3] No work authorized by this permit shall begin until the permittee has contacted and received instructions from

**County Manager John Dersoon Phone 614.387.2524**

(Authorized ODOT Employee)

NOTE: Any work performed by the permittee may be stopped if this requirement is not met.

[4] Prior to any excavation in the highway right-of-way, the Ohio Utilities Protection Service (OUPS) must be contacted in accordance with ORC Section 3781.25 to 3781.32. OUPS can be reached at 1-800-362-2764.

[5] All work requiring men or vehicles within ODOT right of way shall comply with all applicable requirements of the Ohio Manual of Traffic Control Devices and Item 614 (Maintaining Traffic) of the Construction and Material Specifications, latest editions. Failure to comply with these requirements will be cause for immediate revocation or suspension of the permit until the proper traffic control devices have been provided.

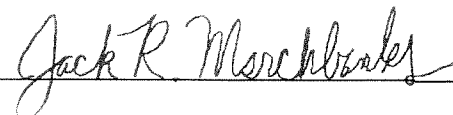
[6] The permittee accepts the conditions, terms, and requirements printed, written on, or attached to this permit and understands that failure to comply fully with those conditions, terms, and requirements or any change in the use of the permit inconsistent with its terms and conditions will be considered a violation and cause for suspension, revocation, or annulment of the permit thereby rendering the permit illegal and subject to appropriate Department action, up to an including removal of the installation at the permittee's expense.

[7] Performance Bond Required? Yes  No  Company:  
Effective Date Expiration Date Amount \$

[8] This permit shall be void if the work described herein does not comply with the conditions, terms, and requirements applicable to this permit, and if the work is not completed by 12/21/2004

Dated this 21 day of June 2004

District Deputy Director



Rev 3/20/00

(See Other Side)

General Provisions Applicable to All Permits  
(Sections 5515.01 and 5515.02 of O.R.C.)

- [1] This permit is not a substitute for satisfying the rights of any other party who may have an interest in the underlying fee.
- [2] The granting of this permit does not convey to the permittee or to the property served any rights, title, or interest in state highway rights-of-way or in the design or operation of the state highway; or in any way abridge the right of the Director of Transportation in his jurisdiction over state highways. If, in the future, it is necessary for improved safety and operation of the state highway or for the benefit of the traveling public, the Director of Transportation may reconstruct, relocate, modify, repair, or remove any permitted connection or any features or fixtures thereof; or redesign the state highway including installing any auxiliary lanes and/or modifying any allowable turning movements. Such changes in the state highway design or operation, necessary for improved safety and operation or for the benefit of the traveling public, shall not require a permit modification since the permit confers no private rights to the permittee over the control of the state highway.
- [3] The District Deputy Director acts for and on behalf of the Director in issuing and carrying out the provisions of all permits. The District Deputy Director has full authority to ensure that all provisions of the permit are met and to reject any materials, design, and workmanship that do not meet applicable Department standards. The District Deputy Director, at his/her discretion, may require a performance bond or certified check as a prerequisite to the issuance of a permit.
- [4] Failure on the part of the permittee to comply fully with the provisions and conditions of the permit will be cause for suspension, revocation, or annulment of the permit thereby rendering the permit illegal and subject to appropriate Departmental action. By accepting the permit, the permittee agrees to comply with all conditions, terms, and restrictions printed or written on or attached to the permit. If the permittee performs any work contrary to the conditions of the permit or to the instructions of the District Deputy Director and, after due notice, fails to correct the problem, the Department of Transportation may, with or without notice, correct such work and the permittee shall reimburse the Department for the costs.
- [5] The permittee shall hold harmless the Department of Transportation, the State of Ohio, and all of its representatives from all suits, actions, or claims of any character, brought on account of any injuries or damages sustained by any person or property in consequences of any neglect or on account of any act or omission as a result of the issuance of the permit.
- [6] All work authorized under the permit shall be performed to the Department's satisfaction, and the entire expense shall be borne by the permittee. No work shall be performed until the permittee has contacted the Department's appointed representative named on the permit and received instructions. The Department's representative may inspect all work covered by the permit, or the Department reserves the right, during the time any or all of the work is being performed, to appoint an inspector over the work who shall represent the interest of the State on the work and any compensation arranged for shall be paid wholly by the permit holder. Work not in compliance shall be halted and the District Deputy Director shall be notified of the cause. The permittee shall be notified of the Department's action and its causes, and given an opportunity to correct the problem.
- [7] Failure to complete all work within the time specified on the permit shall void the permit, thereby making the permit illegal and subject to appropriate Departmental action. The permittee may request an extension in writing from the District Office, explaining why the extension is necessary and when the work is expected to be completed.
- [8] All work infringing on the pavement or shoulders shall comply with applicable standards and requirements regarding traffic control devices. Failure to comply will be cause for revocation or suspension of the permit. Any closure of lanes or shoulders shall be described in terms of location, duration, time of day, etc. Such work shall not begin until all traffic control devices are in place.
- [9] If any grading, sidewalk, or other work allowed by a permit interferes with the drainage of the highway in any way, such catch basins and outlets as necessary shall be constructed to take proper care of said drainage.
- [10] Upon completion of the work, the permittee shall leave the highway clean of all rubbish, excess materials, temporary structures and equipment, and all parts of the highway shall be left in a condition acceptable to the Department. Upon satisfactory completion of the work authorized by the permit, the Department's appointed representative shall complete the Permit Inspection Certificate, Form No. MR 678 certifying that the permittee has complied with the terms of the permit.
- [11] Except as herein authorized, no excavation shall be made or obstacle placed within the limits of the highways so as to interfere with the travel over the road.
- [12] All pole lines are to be built in accordance with Rule 4901:3-1-08 of Ohio Administrative Code promulgated and enforced by the Public Utilities Commission of Ohio.
- [13] The permittee shall comply with the Air Pollution requirements of Rule 3745-17-08 of the Ohio Administrative Code promulgated and enforced by the Ohio Environmental Protection Agency.

**Attached Sheet**  
**06-0400-04**

Traffic Control as per plans and specifications attached. All disturbed terrain shall be restored to original or better condition. Any disturbed areas shall be seeded per Manual of Construction and Materials Specifications Current Edition ( Item 655) and excess material removed from site. Any damage to underground drainage or other installations shall be repaired by applicant. No trenching within 10 feet from outer edge of pavement. All work requiring men or vehicles on the pavement or shoulders shall comply with all requirements of the Ohio Manual of Uniform Traffic Control Devices. Applicant shall also comply with all applicable provisions on the reverse side if this permit. This is not a substitute for satisfying the rights of any other party that may have an interest in the underlying fee.

**Location:** Franklin County  $\int$  670, I-670 from I-70 to I-71 north and south side of Road.

The permittee shall take any and all appropriate measures to limit soil erosion during and after construction authorized herein. As such he shall be fully accountable to the Ohio EPA, the Soil Conservation Service, and other appropriate agencies for any violation or disregard of the applicable governing standards and regulations related to the protection and conservation of soils that are affected by this permitted work.

**1. No Work Shall Be Performed 6:00 A.M. thru 9:00 A.M. or 3:00 P.M. thru 7:00 P.M. between SR315 & I-71**

**Contact County Manager for final inspection when work is completed.**

MR 505  
App No 395

State of Ohio  
Department of Transportation  
Permit Application  
**PERMIT #**  
See Reverse side for additional requirements

Office Use Only	
County/	<u>FAA</u>
Jurisdiction	<u>FAA</u>
Rte <u>670</u>	LogPt <u>0000</u>
AccCat	

06-0400-04

[1] This form must be completed by the property owner or agents working for a utility company (if applicable). Application by contractor is unacceptable.

Name DLZ OHIO INC  
Address 6121 HUNTLEY ROAD City COLUMBUS State OH  
Zip 43229 Phone (614) 888-0040 Other (Fax) E-mail (614) 888-6415

C-5

[2] Type of Permit requested:  Commercial (See other side)  Residential  Field  Utility  Drainage  
 Beautification (See other side)  Spraying, trimming, tree removal  Other

[3] Briefly describe work to be performed. (Attach plans and see Instructions.)  
"TEXT" TRAFFIC CONTROL  
SURVEY OF ALL OUTFALLS ALONG I670 FROM ITS INTERSECTION WITH I-70 TO ITS INTERSECTION WITH I71.

Traffic Plan  
CREWS WILL FOLLOW SECTION 6G.05 USING SURVEY CREW AHEAD SIGNS (SEC 6F.35)  
SEC 6G.05 = "WORK OUTSIDE OF SHOULDER"

[4] Location where work is to be performed. Give sufficient detail to locate the site accurately, such as the distance in miles or feet from a mile post or from some geographical feature such as an intersecting highway.  
In FRANKLIN County (along, across) State Route I-670, 0 miles or 0 feet  
North East West South of I-70 TOWARD I-71 on the North X East West South side of the road.  
Work to commence on JUNE 23 and will require 30 days to complete  
0000

[5] Does the property owner own or have any interests in any adjacent property?  Yes  No  
If yes, please describe.

[6] Prior to any excavation in the highway right-of-way, the Ohio Utilities Protection Service (OUPS) must be contacted in accordance with ORC Section 3781.25 to 3781.32. OUPS can be reached at 1-800-362-2764.

[7] Open cutting of pavement shall not be permitted unless no reasonable alternate method is available. Written approval of the Ohio Department of Transportation District Office must be obtained.

[8] All work requiring men or vehicles within ODOT right of way shall comply with all applicable requirements of the Ohio Manual of Traffic Control Devices and Item 614 (Maintaining Traffic) of the Construction and Material Specifications, latest editions. Failure to comply with these requirements will be cause for immediate revocation or suspension of the permit until the proper traffic control devices have been provided.

[9] I have received a copy of the policies and regulations pertaining to the permit for which I have applied. If a permit is subsequently issued to me by the Ohio Department of Transportation, I understand that the permit will state the terms and conditions for its use, and I agree to comply with all conditions and regulations stipulated on or attached to the permit. I also understand and agree that failure to comply fully with all conditions and regulations of the permit or any change in the use of the permit inconsistent with its terms and conditions will be considered a violation and cause for suspension, revocation, or annulment of the permit thereby rendering the permit illegal and subject to appropriate Department action, up to an including removal of the installation at the permittee's expense.

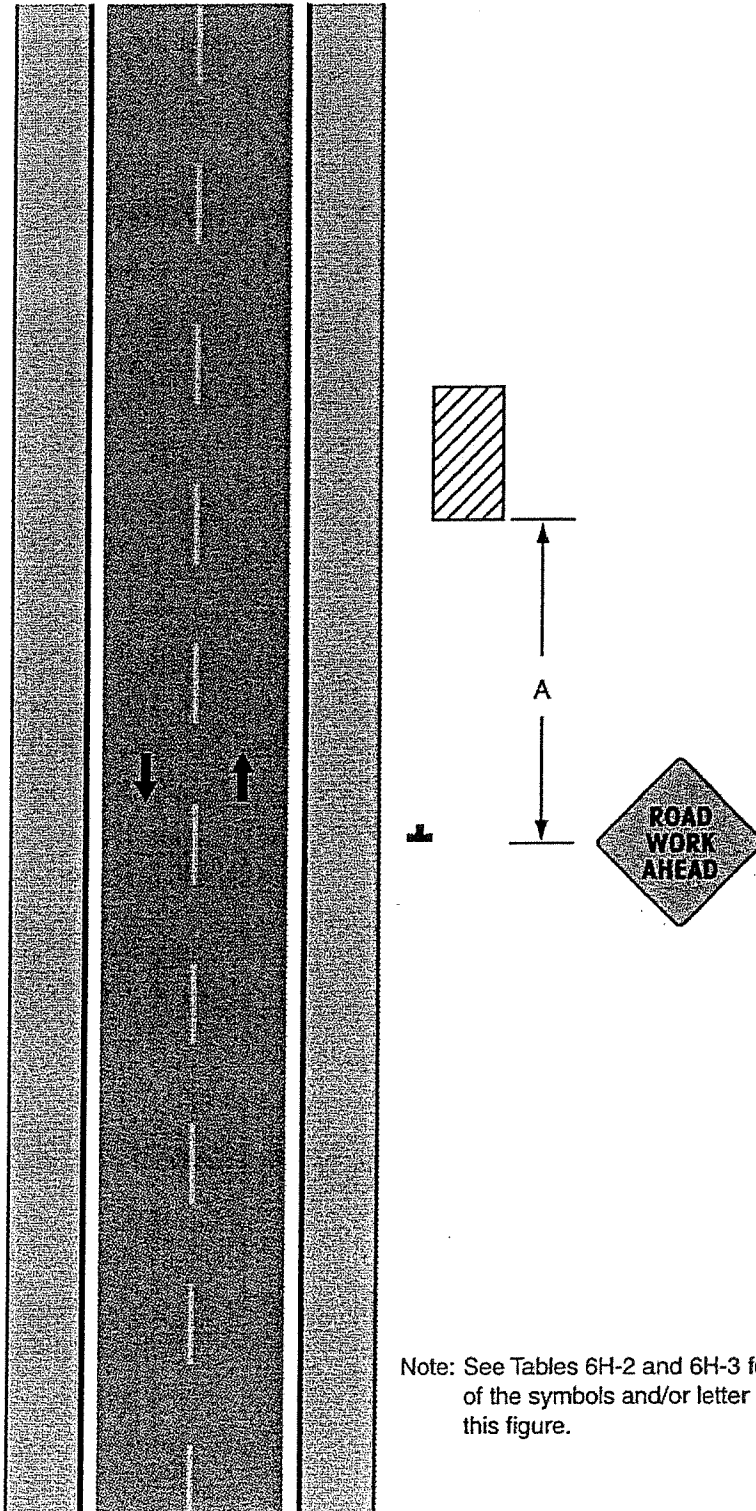
SIGN & PRINT HERE

→ [Signature]  
Signature of Property Owner or Agent for Owner  
Date JUNE 21, 2004  
Day time Phone 614 888-0040

Office use only	
Date Received	<b>RECEIVED</b>
By	
Date Accepted	<u>JUN 16 2004</u>
By	
PERMITS	

6.21.04

**Figure 6H-1. Work Beyond the Shoulder (TA-1)**



Note: See Tables 6H-2 and 6H-3 for the meaning of the symbols and/or letter codes used in this figure.

**Typical Application 1**

**APPENDIX G**

**OUTFALL DATA SUMMARY TABLE**

**OUTFALL DATA SUMMARY TABLE**

Location	Outfall Type	Data Type	Data to be Collected	Format	Data Upload Field Name(s)	QA/QC
Office	All	Location Information	ODOT District number	Integer: 1-12	DISTRICT_NBR	
			ODOT facility address (for outfalls at facilities only)	Example: CLA Outpost, 123 Street, Anywhere, OH 44020. Free Form Text String	ODOT_FAC_ADDRESS1_TXT ODOT_FAC_ADDRESS2_TXT	
			County abbreviation	3-character county abbreviation from Table 1	COUNTY_ABREV3_CD	
			Township or City Name	Free Form Text String	TOWNSHIP_NME	
			11-digit Hydrologic Unit Code (HUC)	11-digit number: 05060001080, etc.	WATERSHED_NBR	
			Name of receiving stream	Free Form Text String. Characters = <100.	RECEIVING_STREAM_NME	
Field	All	Location Information	Network Linear Feature Identification (NLFID). See Section 2.7 for description.	14-character string	NLF_ID	
			Latitude WGS1984	WGS1984. Decimal degrees. XX.XXXXXX	LATITUDE_NBR	
			Longitude WGS1984	WGS1984. Decimal degrees. -XX.XXXXXX	LONGITUDE_NBR	
			Ohio State Plane North	NAD 1983 Ohio South Zone State Plane Coordinates, US Survey Feet	NORTHING_NBR	
			Ohio State Plane East	NAD 1983 Ohio South Zone State Plane Coordinates, US Survey Feet	EASTING_NBR	
		Unique outfall identifier. See Section 3.3 for description.	FRA00123L, FRACGFB, etc. Characters = 9 or less.	OUTFALL_FIELD_ID_NBR		
		Outfall type: ditch or pipe. See Section 1.4 for description.	D: Ditch outfall, P: Pipe outfall. Characters = 1.	OUTFALL_TYPE_CD		
		Presence of rock channel protection	Y: Yes, N: No. Characters = 1	ROCK_CHANNEL_PROTECTION_CD		
		Miscellaneous outfall comments	Free Form Text String	OUTFALL_COMMENTS_TXT		
		Date of outfall survey	MM/DD/YEAR	OUTFALL_SURVEY_DT		
	Outfall Attributes	Ditch	Indicates if litter is present at site	Y: YES, N: NO. Characters = 1	LITTER_PRESENT_IND	
			Site sketch. See Section 3.3 for content.	JPEG (*.JPG) image files only.	N/A – separate upload	
			Digital photograph(s) of outfall. See Section 3.3 for details.	JPEG (*.JPG) image files only. Use format in Section 3.3.	N/A – separate upload	
			Back slope as a ratio (00:00)	Numbers in form: 00:00. Characters = 5.	BACKSLOPE_RATIO_NBR	
			Fore slope as a ratio (00:00)	Numbers in form: 00:00. Characters = 5.	FORESLOPE_RATIO_NBR	
		Bottom width of ditch (inches)	Integer	BOTTOM_WIDTH_NBR		
		Pipe	Type of pipe shape	1: Circular, 2: Rectangular, 3: Elliptical, 4: Egg, 5: Other. Characters = 1	PIPE_SHAPE_CD	
			Pipe Height (inches)	Integer	PIPE_HEIGHT_NBR	
			Pipe Width (inches)	Integer	PIPE_WIDTH_NBR	
			Type of pipe material	1: RCP, 2: VCP, 3: CMP, 4: PVC, 5: CPP, 6: Other. Characters = 1	PIPE_MATERIAL_CD	

Location	Outfall Type	Data Type	Data to be Collected	Format	Data Upload Field Name(s)	QA/QC
Field	All	Dry Weather Visual Field Screening	Odor present at outfall	NONE: None, MUST: Musty, SEWA: Sewage, SOLV: Solvent, SULF: Sulfur, OIL: Oil, GASO: Gasoline, OTHR: Other. Characters = 4 or less	ODOR_CD	
			Color of water at outfall	NONE: None, YELO: Yellow, GREE: Green, BROW: Brown, GRAY: Gray, OTHR: Other. Characters = 4 or less	COLOR_CD	
			Turbidity of water at outfall	CLEA: Clear, CLOU: Cloudy, OPAQ: Opaque. Characters = 4 or less	TURBIDITY_CD	
			Floatables present at outfall	NONE: None, OIL: Oil Sheen, SEWA: Sewage, FOAM: Foam/Bubbles, ALGE: Algae. Characters = 4 or less	FLOATABLES_CD	
			Date of last known precipitation of >0.10 in.	MM/DD/YEAR	LAST_RAIN_FALL_DT	
			Status of potential illicit discharge: low/medium/high priority or no flow condition. See Section 3.3 for description.	NONE: No flow, LOW: Low priority, MED: Medium priority, HIGH: High priority. Characters = 4 or less	ILLICIT_DISCHARGE_CD	
			Source of potential illicit discharge	NONE: None, HSTS: Home Sewage Treatment System, INDU: Industrial, COMM: Commercial, OTHR: Other. Characters = 4 or less	ILLICIT_SOURCE_CD	
			Additional comments about the potential illicit discharge source	Free Form Text String. Characters = <100.	ILLICIT_SOURCE_OTHER_TXT	

## **APPENDIX H**

### **EXAMPLE DATA FORM, SKETCH, AND PHOTOS**



**OHIO DEPARTMENT OF TRANSPORTATION  
MS4 STORM WATER OUTFALL INVENTORY**



**OFFICE DATA**

**Staff:** Benes

---

**Name of Receiving Stream:** Brady Creek

---

**11-Digit HUC:** 5060001220      **County:** FRA

---

**Municipality:** Prairie Township      **NLFID:** SFRA00040\*\*C

---

**Facility Address:** N/A

---

**FIELD DATA**

**Staff:** Newman, Kramer

---

**Date of Field Survey:** 9/4/2004      **Rock Channel Protection?**  Yes  No

---

**Outfall Identifier:** FRA00123L      **Litter Present?**  Yes  No

---

**OH St Plane Northing:** 744000.00      **Latitude:** 39.950729 N

---

**OH St Plane Easting:** 1815000.00      **Longitude (-):** 83.170876 W

---

**Ditch Outfalls Only**

**Back Slope (00:00):**

---

**Fore Slope (00:00):**

---

**Bottom Width (in.):**

The diagram shows a cross-section of a ditch. On the left is a 'Roadway'. To its right is the 'Fore Slope' with a 'Run:Rise' ratio. The ditch itself is in the center, with 'Bottom Width' indicated by a double-headed arrow. To the right of the ditch is the 'Back Slope' with a 'Run:Rise' ratio. A small right-angled triangle is shown below the fore slope, with 'Rise' on the vertical side and 'Run' on the horizontal side.

**Pipe Outfalls Only**

**Pipe Shape:**  Circular - Rectangular -  
(choose one)      Elliptical - Egg - Other

---

**Pipe Height (in.):** 30

---

**Pipe Width (in.):** 30

---

**Pipe Material:**  RCP - VCP - CMP - PVC -  
(choose one)      CPP - Other

**Comments. (Provide explanation why "Other" was selected.)**  
 Photos #8 and #9. Cobble, gravel, and sand present inside pipe (stream substrate).

**DRY WEATHER VISUAL FIELD SCREENING**

**Staff:** Newman, Kramer

**Date of Dry Weather Visual Field Screening:** 9/4/2004

*Make only one choice for each:*

<b>Odor Present at Outfall:</b>	None - Musty -
	<u>Sewage</u> - Solvent -
	Sulfur - Oil -
	Gasoline - Other

<b>Floatables Present at Outfall:</b>	<u>None</u> - Oil Sheen -
	Sewage -
	Foam/Bubbles -
	Algae

<b>Color of Water at Outfall:</b>	None - Yellow -
	Green - Brown -
	<u>Gray</u> - Other

<b>Turbidity of Water at Outfall:</b>	Clear - <u>Cloudy</u> -
	Opaque

<b>Status of Potential Illicit Discharge:</b>	No flow -
	Low priority -
	<u>Medium priority</u> -
	<u>High priority</u>

<b>Source of Potential Illicit Discharge:</b>	None - HSTS -
	Industrial -
	<u>Commercial</u>
	Other

**Comments regarding dry weather visual field screening and potential illicit discharges.**

**Provide explanation why "Other" was selected.**

Source of potential illicit discharge may be Bob's Car Repair located adjacent to stream along US 40.  
Very little flow (< 1 gallon every 6 seconds) at outfall.

Bob's  
Car  
Repair

FRA00123L1

30" RCP

← FLOW

FRA00124L2

Ditch

US 40 Westbound

FRA00125M1

12" CPP

FRA00126M2

10" CPP

US 40 Eastbound

30" RCP

BRADY CREEK

FRA00128R2

Ditch

FRA00127R1

### MS4 STORMWATER OUTFALL INVENTORY

LOCATION DESCRIPTION: FRA US 40  
Brady Creek Crossing

DATE: 9/4/04  
CHKD. BY: CK





**APPENDIX I**  
**FACILITIES OVERVIEW**

## **ODOT MS4 STORM WATER OUTFALL INVENTORY**

### **FACILITIES OVERVIEW**

1. Review ODOT MS4 area base maps to determine which facilities are subject to the inventory.
2. Review ecological mapping to determine if surface waters of the State may be present on the property and identify potential outfall locations.
3. Contact all regulated facilities to...
  - Inquire about the potential existence of surface waters of the State if none were identified during ecological mapping review.
    - If it is highly unlikely that surface waters of the State exist on the property, based on ecological mapping review and discussions with the facility staff, then the facility does not need to be field reviewed.
  - Obtain permission to access the facility.
  - Schedule data collection.
  - Suggest that a meeting be scheduled with facility staff to discuss the nature of the work to be performed and to gather drainage information, including a plan review if necessary.
4. Data collection, documentation, and submission is the same as that for roadways, with the exception of including the facility address and the unique outfall identifier, which is different than roadway outfalls.

## **APPENDIX J**

### **DATABASE SUPPORT DOCUMENTATION**

## EXAMPLE IMPORT (CSV) FILE

```
LATITUDE_NBR, LONGITUDE_NBR, NORTHING_NBR, EASTING_NBR, HEIGHT_ABOVE_ELLIPSO
ID_NBR, MEAN_SEA_LEVEL_ELEV_NBR, SITE_BTRS_LINK_NBR, NLF_ID, LOGPOINT_COUNTY
_NBR, DISTRICT_NBR, ODOT_FAC_ADDRESS1_TXT, ODOT_FAC_ADDRESS2_TXT, COUNTY_ABR
EV3_CD, TOWNSHIP_NME, COUNTY_SECTION_TXT, OUTFALL_SEQ_NBR, OUTFALL_BTRS_LINK
_NBR, WATERSHED_NBR, WATERSHED_TMDL_IND, TMDL_RO_IND, RECEIVING_STREAM_NME, S
AMPLE_COLLECTED_IND, OUTFALL_TYPE_CD, OUTFALL_TYPE_OTHER_TXT, BACKSLOPE_RAT
IO_NBR, FORESLOPE_RATIO_NBR, BOTTOM_WIDTH_NBR, BASE_FLOW_CD, AVG_DEPTH_FLOW_
_NBR, AVG_DEPTH_SEDIMENT_NBR, STRUCTURAL_STATUS_CD, PIPE_SHAPE_CD, PIPE_SHAPE
_OTHER_TXT, PIPE_HEIGHT_NBR, PIPE_WIDTH_NBR, PIPE_MATERIAL_CD, PIPE_MATERIAL
_OTHER_TXT, ROCK_CHANNEL_PROTECTION_CD, OUTFALL_COMMENTS_TXT, OUTFALL_SURVE
Y_DT, INSPECTION_REQUIRED_IND, MAINTENANCE_REQUIRED_IND, LITTER_PRESENT_IND
, ILLICIT_DISCHARGE_CD, ILLICIT_SOURCE_CD, ILLICIT_SOURCE_OTHER_TXT, ODOR_CD
, COLOR_CD, TURBIDITY_CD, FLOATABLES_CD, LAST_RAIN_FALL_DT, SAMPLE_DT, CONTRAC
TOR_TAX_ID
39.8644001, -
84.05189464, 66666666, 7777777, 4321, 899.1409912, 1314035, SCLAIR99999**C, 0.02
, 7, 123 Facility Address, , CLA, BETHEL, 36, R1, 1314035, 5080001190, Y, Y, RAM
CREEK, N, 4, , 1001, 3006, 4, N, 1, 2, NONE, 4, This is one big
pipe., 90, 9, 4, "Special Material, see description.", D, Sample Outfall
Record 1, 1/16/2004, Y, Y, Y, ACTV, HSTS, Illicit source description
1, NONE, NONE, CLEA, NONE, 12/1/2004, 1/1/2005, 311268980
39.8655061, -
84.04925701, 683190.7588, 1533639.036, 714.4730225, 823.1409912, 1314050, SCLA
IR99999**C, 0.17, 7, , , CLA, BETHEL, 36, L1, 1314050, 5080001190, , , MUD
CREEK, N, D, , 2007, 3007, 8, N, 0, 0, NONE, , , 0, 0, , , , Sample Outfall Record
2, 1/16/2004, N, N, Y, ACTV, COMM, Illicit source description
2, NONE, NONE, CLEA, NONE, 12/2/2004, 1/2/2005, 311268980
39.86543508, -
84.04887225, 683163.043, 1533746.579, 711.0620117, 819.7299805, 1314050, SCLAI
R99999**C, 0.17, 7, 456 Facility
Address, , CLA, BETHEL, 36, L2, 1314050, 5080001190, , , MUD
CREEK, N, D, , 1003, 1007, 1, N, 0, 0, NONE, , , 0, 0, , , , Sample Outfall Record
3, 1/16/2004, N, N, Y, ACTV, INDU, Illicit source description
3, NONE, NONE, CLEA, NONE, 12/3/2004, 1/3/2005, 311268980
39.86518413, -
84.04928826, 683073.645, 1533628.253, 716.5159912, 825.1820068, 1314050, SCLAI
R99999**C, 0.17, 7, , , CLA, BETHEL, 36, M1, 1314050, 5080001190, , , MUD
CREEK, N, D, , 2002, 2002, 1, N, 0, 0, NONE, , , 0, 0, , , , Sample Outfall Record
4, 1/16/2004, N, N, Y, NONE, NONE, , NONE, NONE, CLEA, NONE, 12/4/2004, 1/4/2005, 3112
68980
39.8651749, -
84.04900949, 683068.9405, 1533706.434, 717.2969971, 825.9639893, 1314050, SCLA
IR99999**C, 0.17, 7, , , CLA, BETHEL, 36, M2, 1314050, 5080001190, , , MUD
CREEK, N, P, , 1001, 1001, 0, N, 0, 0, NONE, 1, , 15, 15, 3, , , Sample Outfall Record
5, 1/16/2004, N, N, Y, NONE, NONE, , NONE, NONE, CLEA, NONE, 12/5/2004, 1/5/2005, 3112
68980
```

## TROUBLESHOOTING GUIDE

### **User cannot login to system.**

- Check that the user has been added to the OFS\_SECURITY table.
- Check that the OneLogin PIN ID is correct in both the OFS\_SECURITY table and the OneLogin System.
- Check that cookies are enabled on the browser.
- Check that the full URL name was typed into the location bar.

### **Attempting to save a record generates an error.**

- Check the user privileges in OFS\_SECURITY to ensure write access is granted.
- The user may have typed in illegal values into the submission form.
- Obvious examples would include typing characters into numerical fields.

### **Attempting to add an image fails with an error.**

- Check that the IIS process has write-access to the images directory.
- Check the user privileges in OFS\_SECURITY to ensure write access is granted.

### **Attempting to import a fails with an error.**

- Check that the IIS process has write-access to the import directory.
- Check the user privileges in OFS\_SECURITY to ensure import access is granted.
- The import file must contain the valid fields listed in Section 4.2.1.