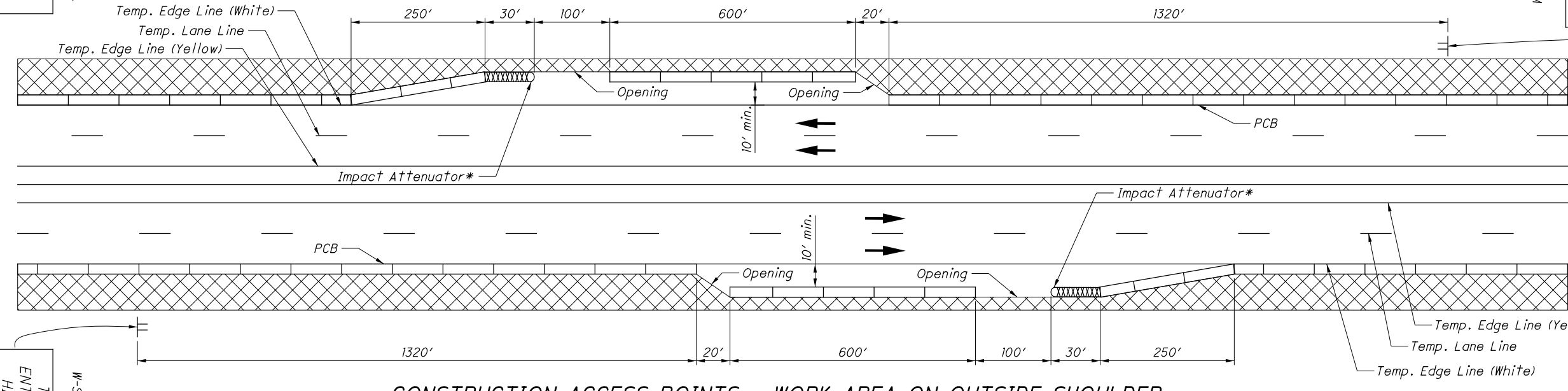


CONSTRUCTION ACCESS POINTS - WORK AREA ON INSIDE SHOULDER



CONSTRUCTION ACCESS POINTS - WORK AREA ON OUTSIDE SHOULDER

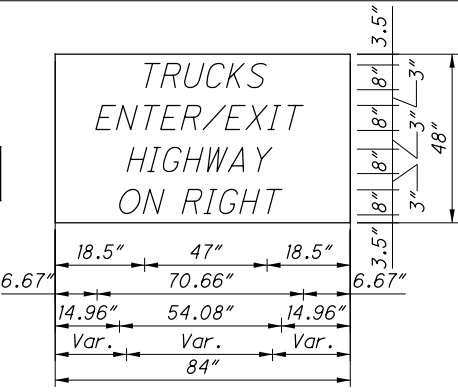
*NOTE: Impact attenuator and the last full section of PCB adjacent to the impact attenuator shall be placed parallel to traffic

W-SPECIAL-84 (R/L)

(SIGN INFORMATION SHOWN IN ENGLISH UNITS ONLY)

TABLE OF WIDTHS AND SPACES

| | | | | | | | | | | | | | | | | | | | | | | | | | | | | | |
|-------|---|------|------|---|------|------|------|------|------|------|------|------|------|------|------|------|-------|--|------|------|-------|------|------|---|------|------|---|------|------|
| 18.50 | T | 5.94 | 1.65 | R | 6.38 | 2.05 | 6.37 | 2.06 | C | 6.37 | 1.65 | K | 6.50 | 1.65 | S | 6.38 | 18.50 | NO BORDER, BLACK ON ORANGE; E MOD FONT | | | | | | | | | | | |
| 6.67 | E | 5.94 | 1.65 | N | 6.38 | 1.67 | 5.94 | 1.65 | E | 5.94 | 1.65 | R | 5.94 | 0.55 | / | 6.47 | 1.10 | E | 5.94 | 1.65 | X | 6.94 | 1.65 | I | 1.60 | 1.65 | T | 5.94 | 6.67 |
| 14.96 | H | 6.38 | 2.05 | I | 1.60 | 2.05 | G | 6.38 | 2.05 | H | 6.37 | 1.65 | W | 8.44 | 0.56 | A | 8.00 | 0.55 | Y | 8.00 | 14.96 | | | | | | | | |
| 13.21 | O | 6.69 | 2.05 | N | 6.37 | 8.00 | R | 6.38 | 2.05 | I | 1.60 | 2.05 | G | 6.38 | 2.05 | H | 6.37 | 1.65 | T | 5.94 | 13.21 | | | | | | | | |
| 15.87 | O | 6.69 | 2.05 | N | 6.37 | 8.00 | L | 6.38 | 1.65 | E | 5.94 | 1.65 | F | 5.94 | 1.65 | T | 5.94 | 15.87 | | | | | | | | | | | |



CONSTRUCTION ACCESS POINTS

Construction access point locations may be selected by the Contractor with the approval of the Engineer. The locations shall be selected for good sight distance and ease of access for entering vehicles (avoid locations just beyond crest vertical curves, on overhead structures, on upgrades, etc.). In the event that the Engineer determines that an access point does not function in a safe manner, he/she shall order it immediately closed at no cost to the State. Access points may be relocated subject to the approval of the Engineer, as necessary to accomplish construction activities.

All costs for relocation of portable concrete barrier, installation, repair, replacement and removal of impact attenuators, grading for access drives and related costs shall be included in the lump sum bid for Item 614 Maintaining Traffic.

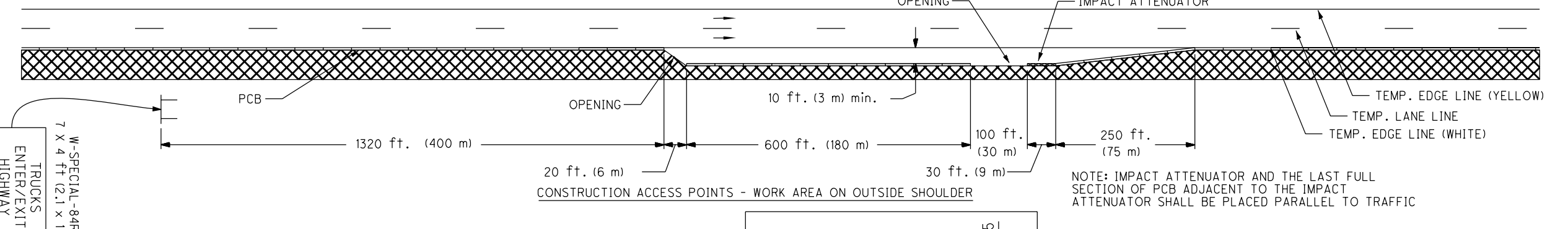
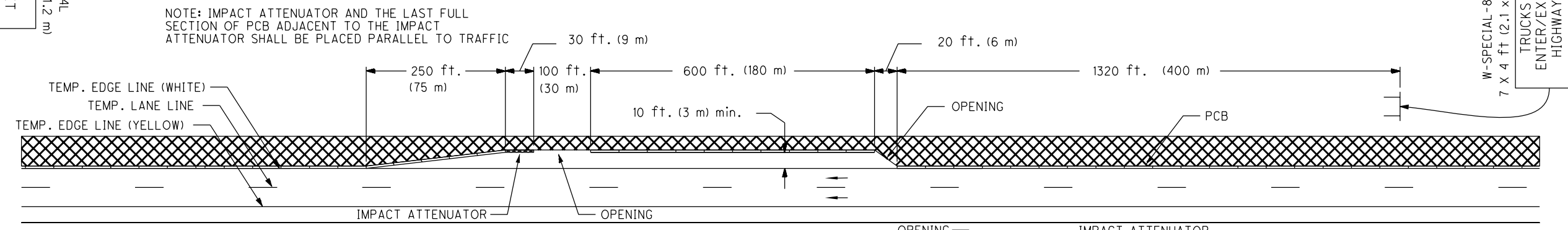
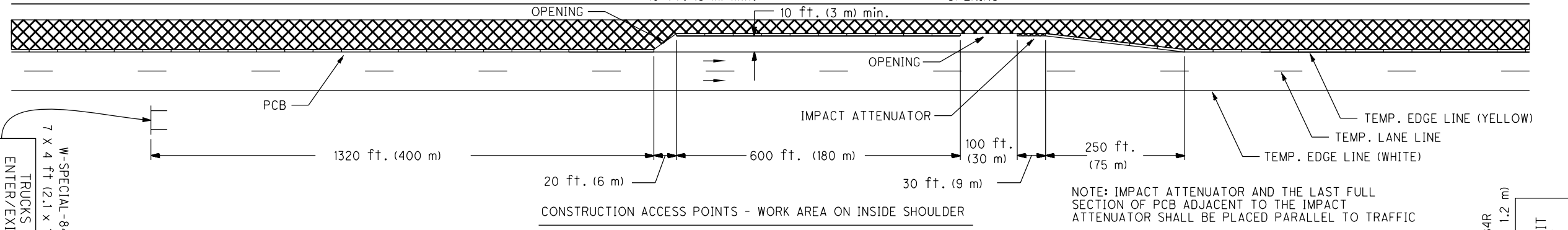
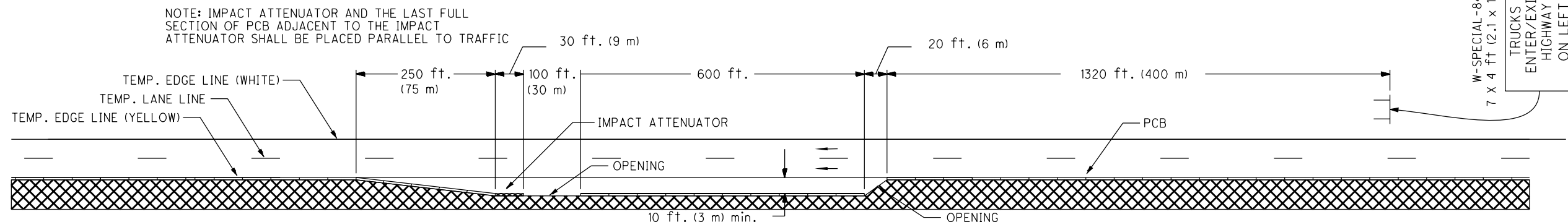
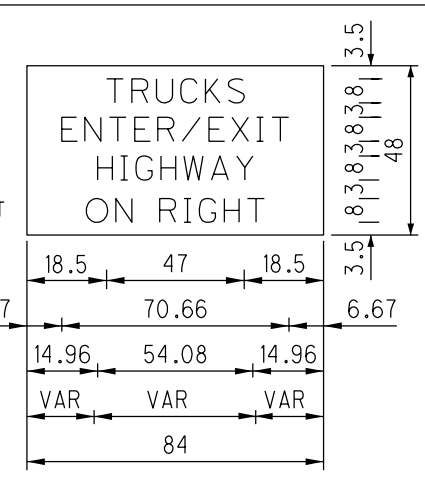


TABLE OF WIDTHS AND SPACES
W-SPECIAL-84 (R/L)
(SIGN INFORMATION SHOWN IN ENGLISH UNITS ONLY)

| | | | | | | | | | | | | | | | | | | | | | | | | | | | | | | |
|-------|---|------|------|---|------|------|---|------|------|---|------|------|---|------|------|---|------|-------|---|------|-------|---|------|------|---|------|------|---|------|------|
| 18.50 | T | 5.94 | 1.65 | R | 6.38 | 2.05 | U | 6.37 | 2.06 | C | 6.37 | 1.65 | K | 6.50 | 1.65 | S | 6.38 | 18.50 | | | | | | | | | | | | |
| 6.67 | E | 5.94 | 1.65 | N | 6.38 | 1.67 | T | 5.94 | 1.65 | E | 5.94 | 1.65 | R | 5.94 | 0.55 | / | 6.47 | 1.10 | E | 5.94 | 1.65 | X | 6.94 | 1.65 | I | 1.60 | 1.65 | T | 5.94 | 6.67 |
| 14.96 | H | 6.38 | 2.05 | I | 1.60 | 2.05 | G | 6.38 | 2.05 | H | 6.37 | 1.65 | W | 8.44 | 0.56 | A | 8.00 | 0.55 | Y | 8.00 | 14.96 | | | | | | | | | |
| 13.21 | O | 6.69 | 2.05 | N | 6.37 | 8.00 | R | 6.38 | 2.05 | I | 1.60 | 2.05 | G | 6.38 | 2.05 | H | 6.37 | 1.65 | T | 5.94 | 13.21 | | | | | | | | | |
| 15.87 | O | 6.69 | 2.05 | N | 6.37 | 8.00 | L | 6.38 | 1.65 | E | 5.94 | 1.65 | F | 5.94 | 1.65 | T | 5.94 | 15.87 | | | | | | | | | | | | |

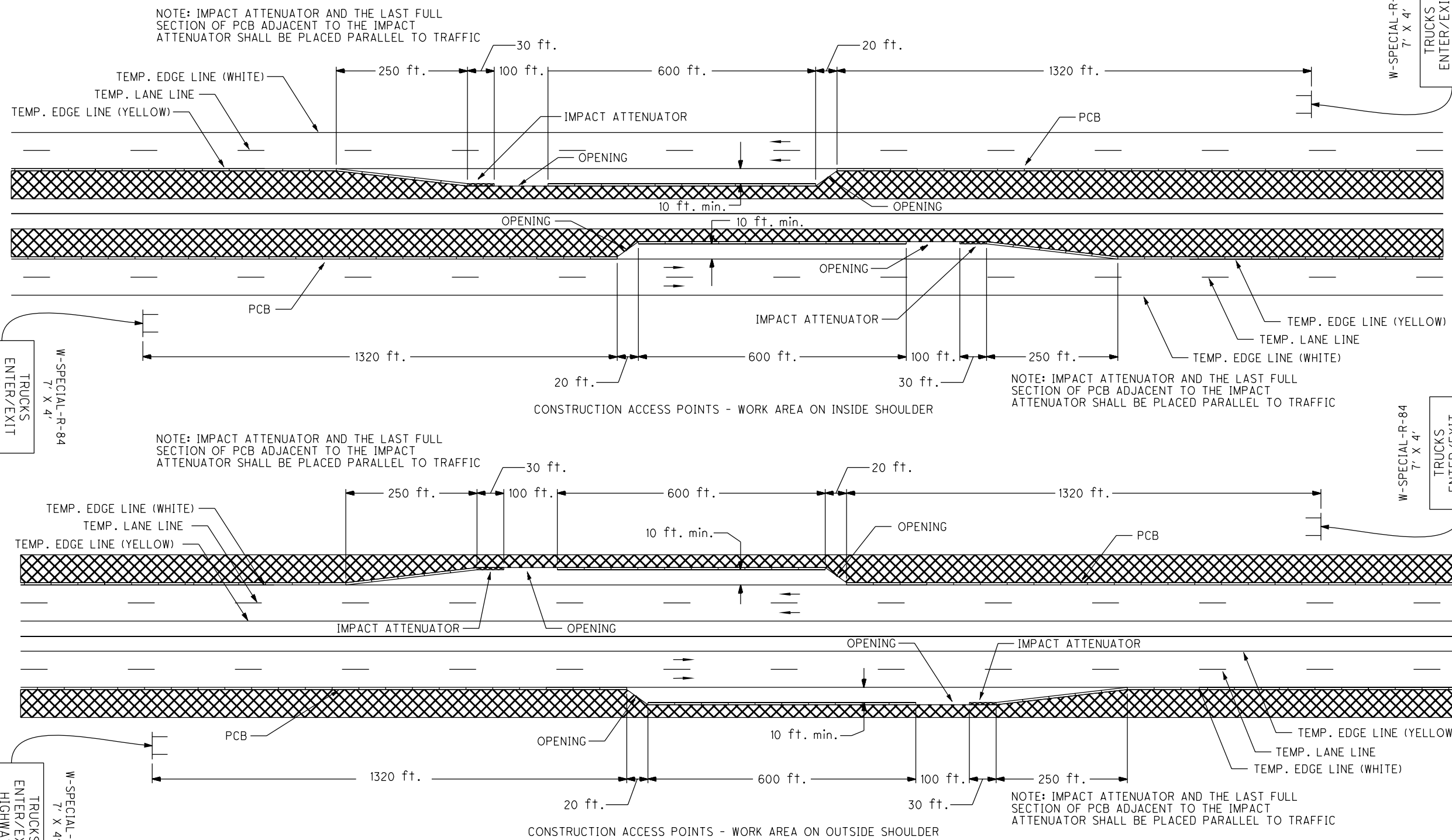
NO BORDER, BLACK ON ORANGE; E MOD FONT



CONSTRUCTION ACCESS POINTS

Construction access point locations may be selected by the Contractor with the approval of the Engineer. The locations shall be selected for good sight distance and ease of access for entering vehicles (avoid locations just beyond crest vertical curves, on overhead structures, on upgrades, etc.). In the event that the Engineer determines that an access point does not function in a safe manner, he/she shall order it immediately closed at no cost to the State. Access points may be relocated subject to the approval of the Engineer, as necessary to accomplish construction activities.

All costs for relocation of portable concrete barrier, installation, repair, replacement and removal of impact attenuators, grading for access drives and related costs shall be included in the lump sum bid for Item 614 Maintaining Traffic.



NOTE: IMPACT ATTENUATOR AND THE LAST FULL SECTION OF PCB ADJACENT TO THE IMPACT ATTENUATOR SHALL BE PLACED PARALLEL TO TRAFFIC

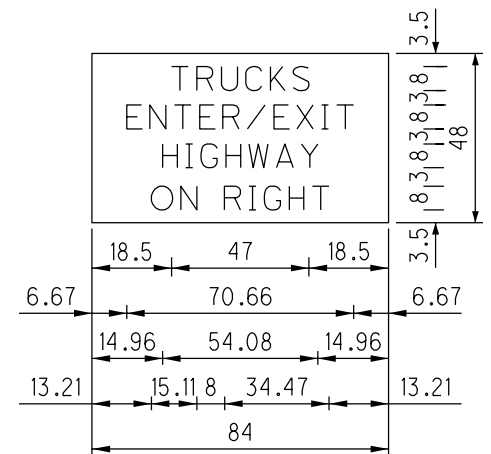
NOTE: IMPACT ATTENUATOR AND THE LAST FULL SECTION OF PCB ADJACENT TO THE IMPACT ATTENUATOR SHALL BE PLACED PARALLEL TO TRAFFIC

NOTE: IMPACT ATTENUATOR AND THE LAST FULL SECTION OF PCB ADJACENT TO THE IMPACT ATTENUATOR SHALL BE PLACED PARALLEL TO TRAFFIC

NOTE: IMPACT ATTENUATOR AND THE LAST FULL SECTION OF PCB ADJACENT TO THE IMPACT ATTENUATOR SHALL BE PLACED PARALLEL TO TRAFFIC

W-SPECIAL; NO BORDER, BLACK ON ORANGE;
"TRUCKS" E MOD; "ENTER/EXIT" E MOD;
"HIGHWAY" E MOD; "ON RIGHT" E MOD;
TABLE OF WIDTHS AND SPACES

| | | | | | | | | | | | | | | | | | | | | | | | | | | | | | | |
|-------|---|------|------|---|------|------|---|------|------|---|------|------|---|------|------|---|------|-------|---|------|-------|---|------|------|---|------|------|---|------|------|
| 18.50 | T | 5.94 | 1.65 | R | 6.38 | 2.05 | U | 6.37 | 2.06 | C | 6.37 | 1.65 | K | 6.50 | 1.65 | S | 6.38 | 18.50 | | | | | | | | | | | | |
| 6.67 | E | 5.94 | 1.65 | N | 6.38 | 1.67 | T | 5.94 | 1.65 | E | 5.94 | 1.65 | R | 5.94 | 0.55 | / | 6.47 | 1.10 | E | 5.94 | 1.65 | X | 6.94 | 1.65 | I | 1.60 | 1.65 | T | 5.94 | 6.67 |
| 14.96 | H | 6.38 | 2.05 | I | 1.60 | 2.05 | G | 6.38 | 2.05 | H | 6.37 | 1.65 | W | 8.44 | 0.56 | A | 8.00 | 0.55 | Y | 8.00 | 14.96 | | | | | | | | | |
| 13.21 | O | 6.69 | 2.05 | N | 6.37 | 8.00 | R | 6.38 | 2.05 | I | 1.60 | 2.05 | G | 6.38 | 2.05 | H | 6.37 | 1.65 | T | 5.94 | 13.21 | | | | | | | | | |



CONSTRUCTION ACCESS POINTS

Construction access point locations may be selected by the Contractor with the approval of the Engineer. The locations shall be selected for good sight distance and ease of access for entering vehicles (avoid locations just beyond crest vertical curves, on overhead structures, on upgrades, etc.). In the event that the Engineer determines that an access point does not function in a safe manner, he/she shall order it immediately closed at no cost to the State. Access points may be relocated subject to the approval of the Engineer, as necessary to accomplish construction activities.

All costs for relocation of portable concrete barrier, installation, repair, replacement and removal of impact attenuators, grading for access drives and related costs shall be included in the lump sum bid for Item 614 Maintaining Traffic.