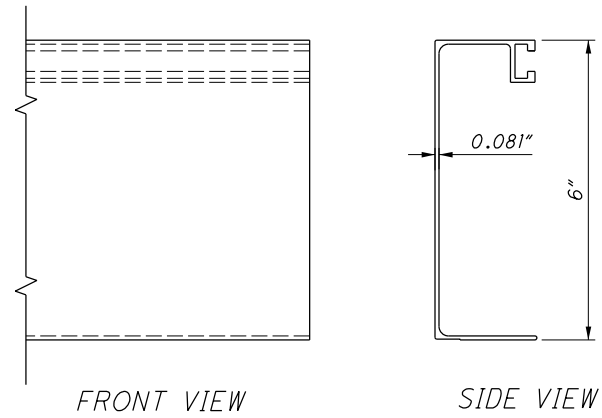
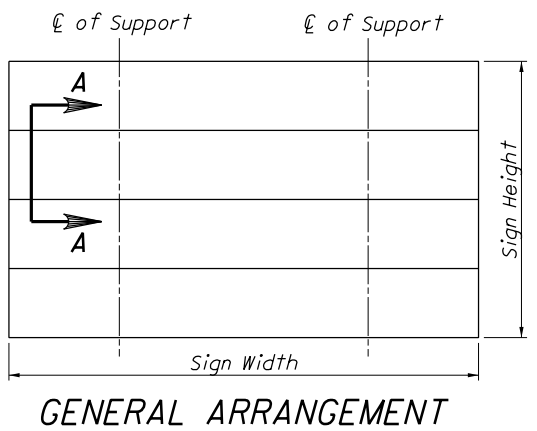
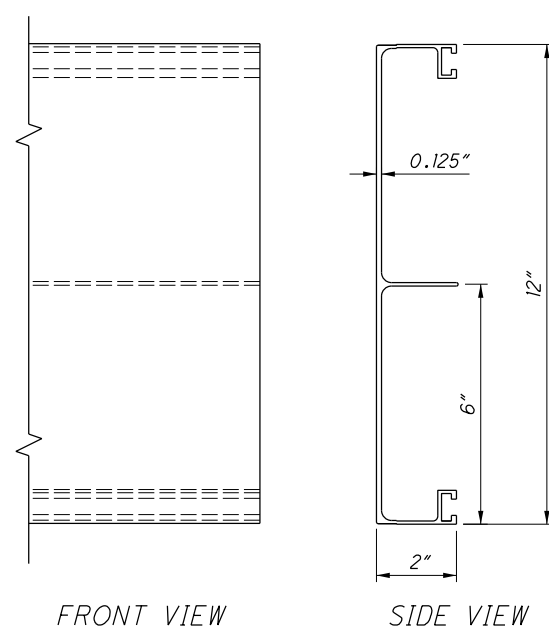


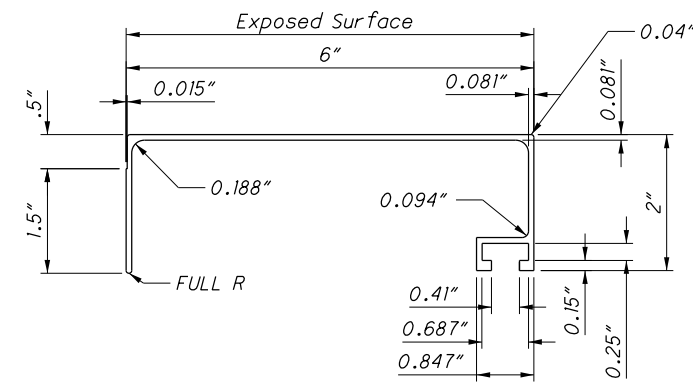
6" BOLTED EXTRUSION PANEL



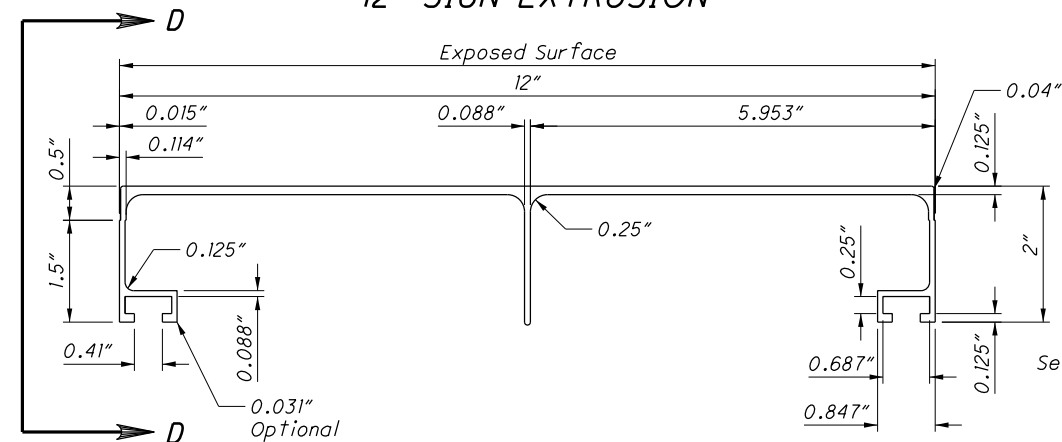
12" BOLTED EXTRUSION PANEL



6" SIGN EXTRUSION

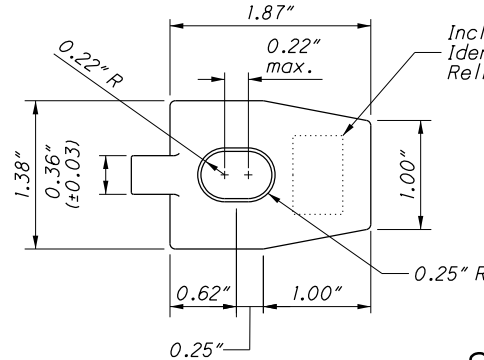
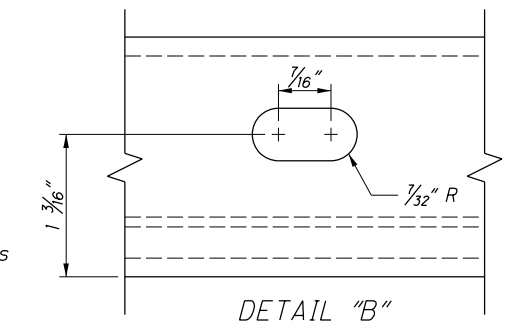
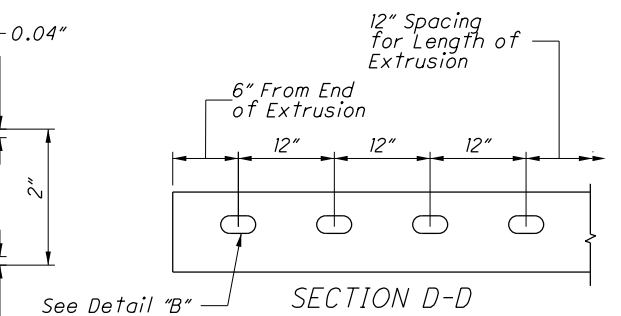


12" SIGN EXTRUSION



NOTES:

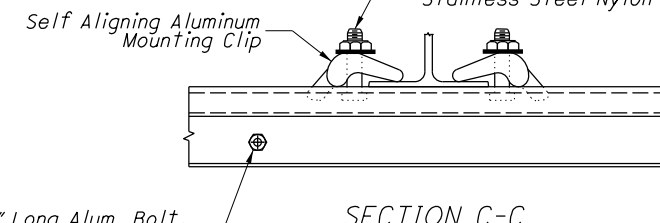
1. Use a combination of 6" and 12" panels erected horizontally to attain required sign height.
2. Bolt panels together 6" from each end, and at a maximum center-to-center spacing of 24" between end bolts.
3. Fasten panels to each vertical structural beam support with mounting clips, both sides at each joint, and both sides at the top and bottom edges of the sign.
4. Fasten panels to each vertical z-bar support with mounting clips at each joint and at the top and bottom edges of the sign.
5. Standard commercial tolerances for extruded shapes apply.



SIGN CLIP

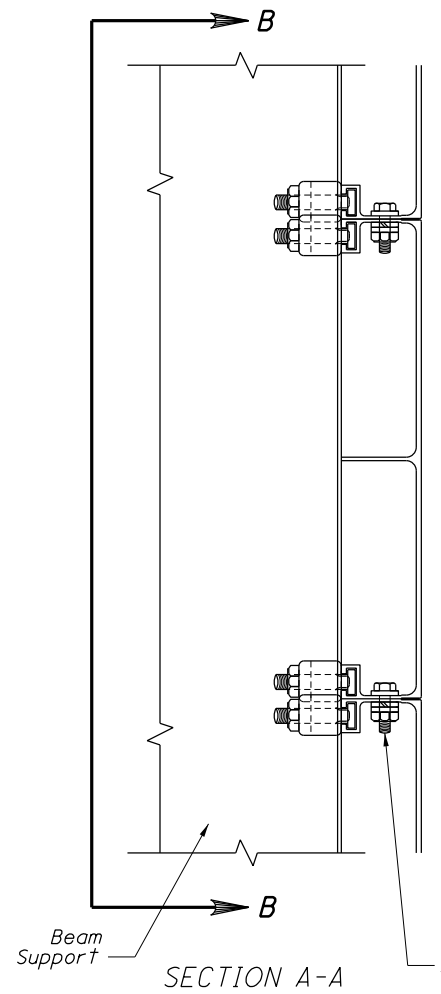
(Tolerance = +0.10, -0.03, Except as Noted)

3/8" - 16 x 1 3/4" Stainless Steel T-Bolt, 0.406" I.D. x 1.00" O.D. x 0.125" Thick Stainless Steel Flat Washer, and 3/8" - 16 Stainless Steel Nylon Insert Lock Nut



3/8"-16 x 3/4" Long Alum. Bolt, Nut, Two Flat Washers and Lockwasher on 24" Centers

3/8"-16 STAINLESS STEEL T-BOLT



3/8" - 16 x 3/4" Long Alum. Bolt, Nut, Two Flat Washers and Lockwasher on 24" Centers

