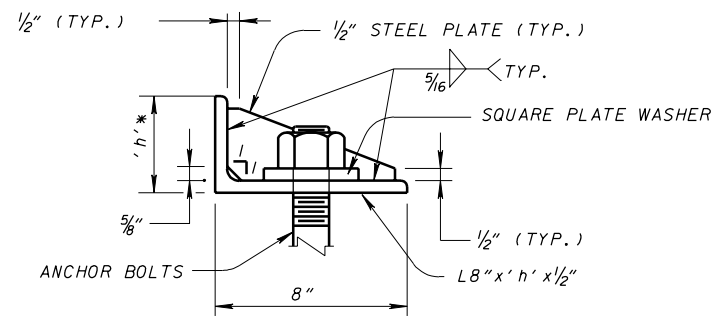


**BEARING RETAINER FOR  
30° < SKEW ANGLE ≤ 45°**

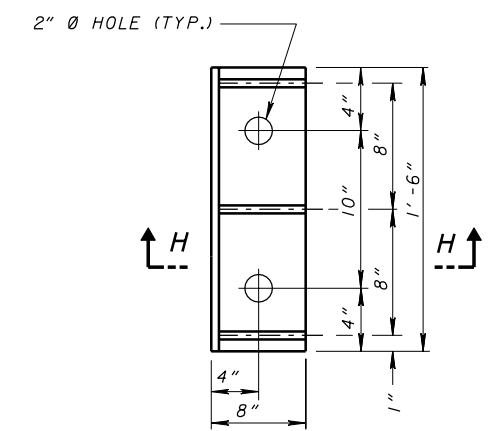
PLACE RETAINER ASSEMBLY ON ACUTE ANGLE SIDE OF BEARINGS.

□ CLEARANCE PROVIDED FROM EACH END OF BEARING RETAINER SHALL BE 3" WHICH ALLOWS FOR MAXIMUM EXPANSION LENGTH OF 250'-0" PLUS AN ADDITIONAL 1" FOR CLEARANCE.



\* DIMENSION 'h' VARIES AND SHALL BE EQUAL TO ELASTOMERIC BEARING HEIGHT + LOAD PLATE THICKNESS BUT SHALL NOT BE LESS THAN 4".

**SECTION H-H**



**BEARING RETAINER ASSEMBLY**  
SEE SHEET 7/7 FOR PLACEMENT INSTRUCTIONS

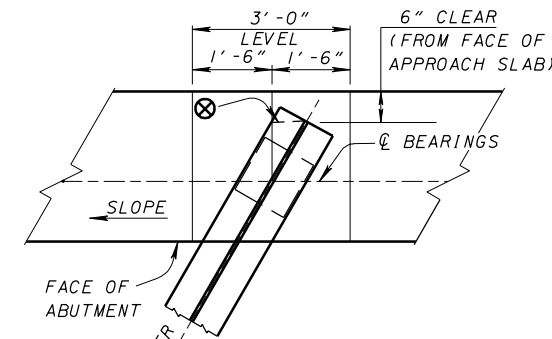
**NOTE:**

HP STEEL SHAPE INCLUDED WITH ELASTOMERIC BEARING FOR PAYMENT.

1/2" DIAMETER X 12" LONG ANCHOR BOLTS WITH NUT AND 4" x 4" x 1/2" SQUARE PLATE WASHER WITH 1 3/4" DIAMETER HOLES, TO BE FIELD DRILLED AND GROUTED WITH AN EPOXY NON-SHRINKING GROUT, 705.20, IN 1 3/4" X 10" DEEP HOLES.

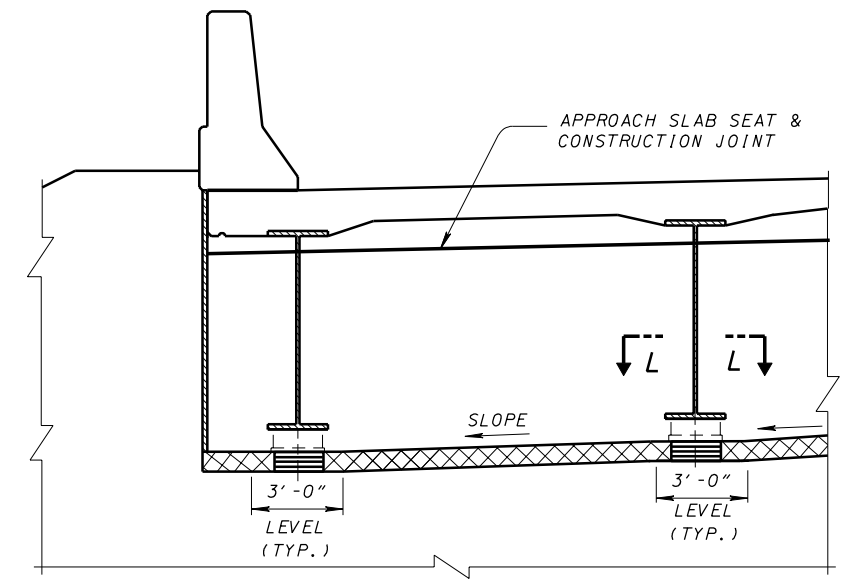
REINFORCING STEEL IN THE VICINITY OF THE BEARING RETAINER SHALL BE ACCURATELY PLACED TO AVOID INTERFERENCE WITH THE DRILLING OF BEARING RETAINER ANCHOR HOLES.

SEE NOTES ON SHEET 7/7 FOR ADDITIONAL REQUIREMENTS.

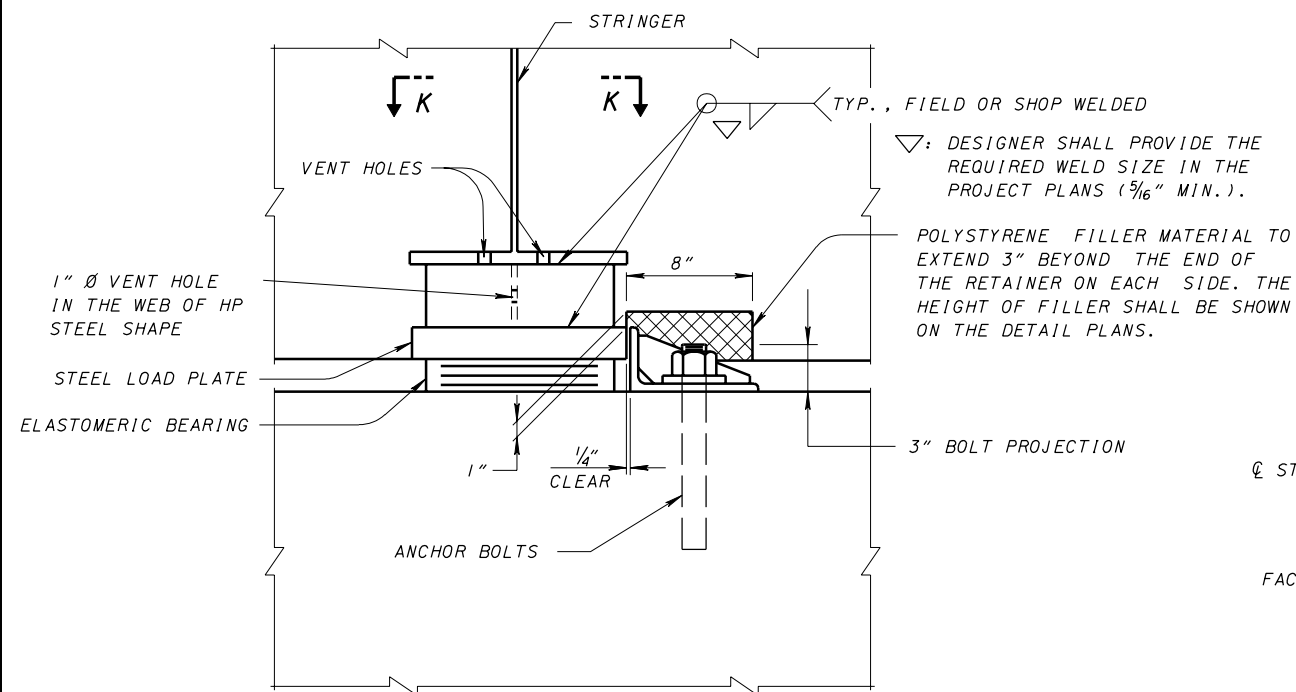


**SECTION L-L**

⊗ - CLIP ONLY THE TOP FLANGE TO MAINTAIN THE CLEARANCE



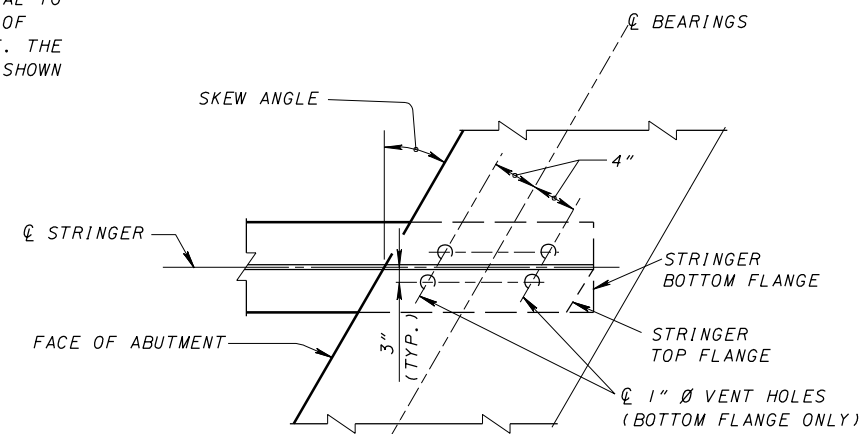
**PART ELEVATION OF BEAM SEAT**



**SECTION J-J**

▽: DESIGNER SHALL PROVIDE THE REQUIRED WELD SIZE IN THE PROJECT PLANS (3/16" MIN.).

POLYSTYRENE FILLER MATERIAL TO EXTEND 3" BEYOND THE END OF THE RETAINER ON EACH SIDE. THE HEIGHT OF FILLER SHALL BE SHOWN ON THE DETAIL PLANS.



**SECTION K-K**

DESIGN AGENCY	OFFICE OF	STRUCTURAL ENGINEERING
STATE OF OHIO DEPARTMENT OF TRANSPORTATION	2-12-97	DATE
ADMINISTRATOR	Brad Fogwell	
CHECKED	REVIEWED	DESIGNED
MFG./J.S.	L.M.W.	W.L.F.
S/C/D-1-96		
REVISIONS	04-20-01	07-19-02
STANDARD		
SEMI-INTEGRAL CONSTRUCTION DETAILS FOR STEEL BEAM AND GIRDER BRIDGES ON RIGID ABUTMENTS		
6	7	