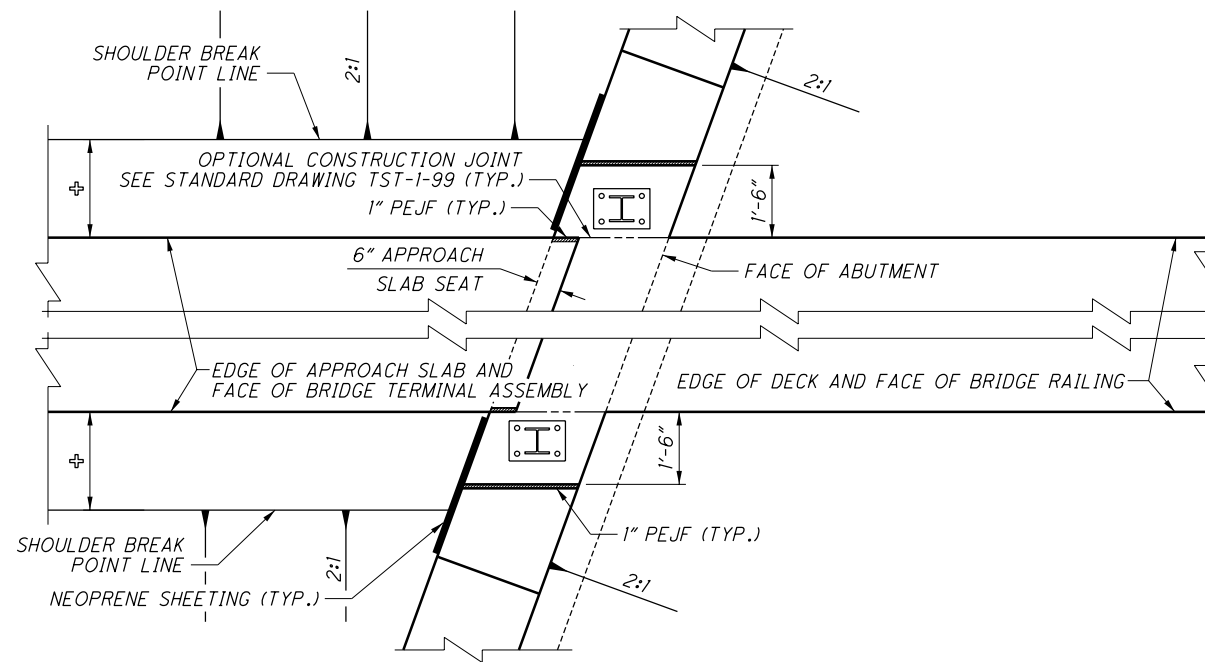


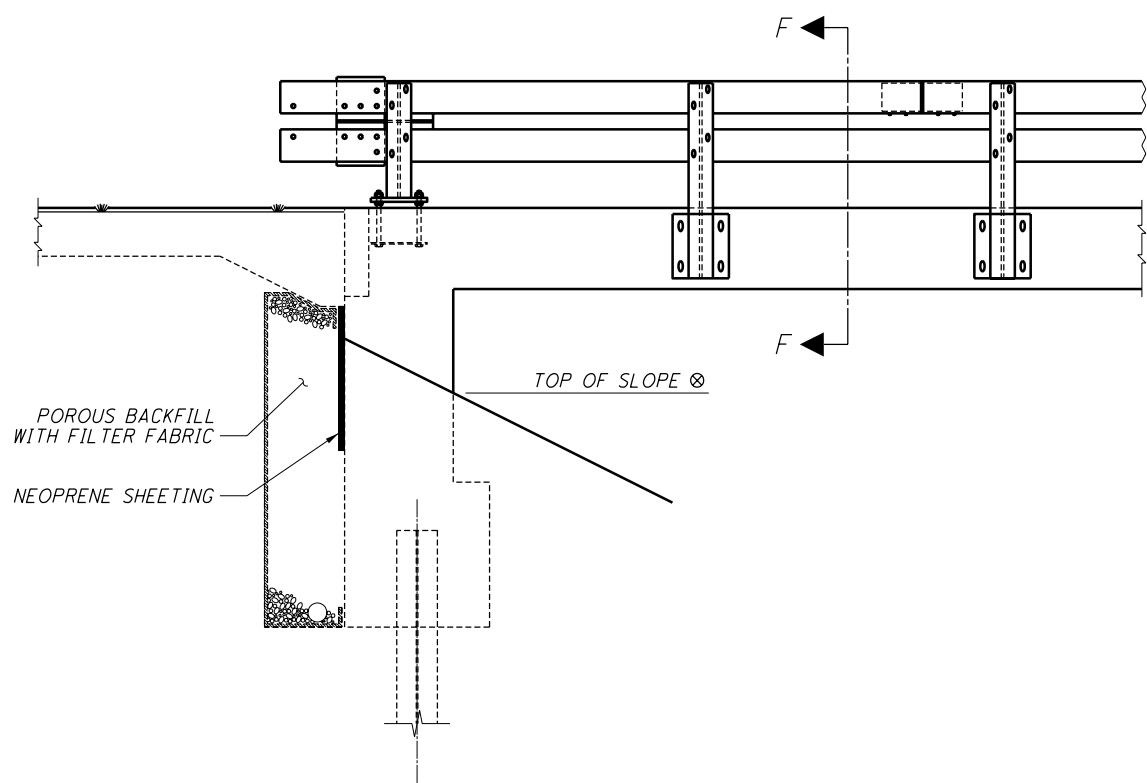
PART PLAN AT ABUTMENT

SQUARE STRUCTURE WITH TWIN STEEL TUBE BRIDGE RAILING
(BRIDGE TERMINAL ASSEMBLY AND BRIDGE RAILING NOT SHOWN)



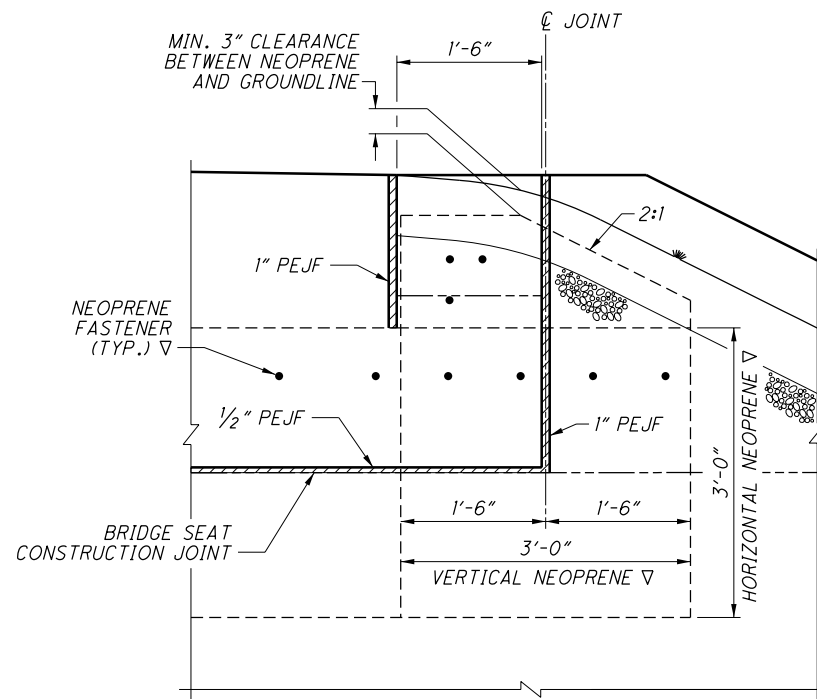
PART PLAN AT ABUTMENT

SKEWED STRUCTURE WITH TWIN STEEL TUBE BRIDGE RAILING
(BRIDGE TERMINAL ASSEMBLY AND BRIDGE RAILING NOT SHOWN)



ELEVATION

FOR SECTION F-F SEE SHEET 4 OF 4
(BRIDGE TERMINAL ASSEMBLY NOT SHOWN)



SECTION E-E

(BRIDGE TERMINAL ASSEMBLY AND BRIDGE RAILING NOT SHOWN)

LEGEND

- ⊕ SEE ROADWAY TYPICAL SECTION
- ⊗ ON SUPERELEVATED STRUCTURES, A LATERALLY SLOPING "TOP OF SLOPE" SHOULD BE USED TO AVOID EXCESSIVELY LONG WINGWALL LENGTHS.
- ▽ SEE PROJECT PLANS FOR ADDITIONAL NEOPRENE SHEETING PLACEMENT REQUIREMENTS

DESIGN AGENCY OFFICE OF STRUCTURAL ENGINEERING	STATE OF OHIO DEPARTMENT OF TRANSPORTATION DATE: 07-18-08 ADMINISTRATOR: [Signature]
REVIEWED: JS	DRAWN: BMC
CHECKED: SAM	DESIGNED: BMC
CPA-1-08	STANDARD
CAPPED PILE ABUTMENT FOR SLAB BRIDGES	
3	4