

GENERAL NOTES

DESIGN SPECIFICATIONS: THIS STANDARD DRAWING CONFORMS TO "STANDARD SPECIFICATIONS FOR HIGHWAY BRIDGES" ADOPTED BY THE AMERICAN ASSOCIATION OF STATE HIGHWAY AND TRANSPORTATION OFFICIALS, 1992, INCLUDING THE 1993 INTERIM SPECIFICATIONS AND THE ODOT BRIDGE DESIGN MANUAL.

DESIGN LOADING: HS20-44 AND THE ALTERNATE MILITARY LOADING

DESIGN DATA: CONCRETE CLASS C - COMPRESSIVE STRENGTH 4000 P.S.I. (SUBSTRUCTURE)
 REINFORCING STEEL - ASTM A615, A616 OR A617, EPOXY COATED, GRADE 60 MINIMUM YIELD STRENGTH 60,000 P.S.I.

POROUS BACKFILL: POROUS BACKFILL 2'-0" THICK WITH FILTER FABRIC SHALL EXTEND UPWARD TO THE PLANE OF THE SUBGRADE, TO ONE FOOT BELOW THE EMBANKMENT SURFACE, AND Laterally TO THE SURFACE OF THE EMBANKMENT SLOPES. GEOTEXTILE FABRIC SHALL CONFORM WITH 712.09, TYPE A. THE BOTTOM OF THE POROUS BACKFILL SHALL BE SLOPED (1" PER FOOT MINIMUM) Laterally TO DRAIN. GEOTEXTILE FABRIC IS INCLUDED WITH POROUS BACKFILL FOR PAYMENT.

ANIMAL GUARD: ANIMAL GUARD SHALL BE PROVIDED AT THE OUTLET END OF THE DRAINAGE PIPE. SEE STANDARD CONSTRUCTION DRAWING MC-4 FOR DETAILS. PAYMENT FOR THE ANIMAL GUARD SHALL BE INCLUDED WITH THE DRAINAGE PIPE, ITEM 518 FOR PAYMENT.

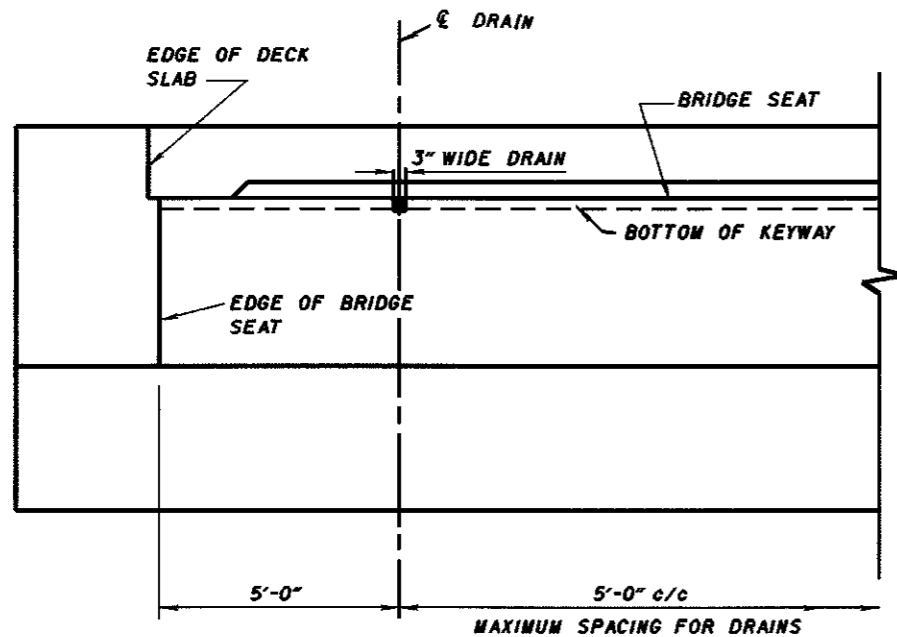
DESIGN INSTRUCTIONS

GENERAL: THIS DRAWING PROVIDES DESIGN AND GENERAL CONSTRUCTION DETAILS. THE PROJECT PLANS FOR EACH STRUCTURE SHALL SHOW STATIONS, SPAN LENGTHS, ROADWAY WIDTH, SKEW, CURVE AND SUPERELEVATION DATA (IF ANY), ELEVATIONS, SUPERSTRUCTURE DETAILS, ESTIMATED QUANTITIES, REINFORCING STEEL LIST, AREAS OF SEALING, TYPE OF SEALER AND OTHER NECESSARY DETAILS AND SPECIAL NOTES.

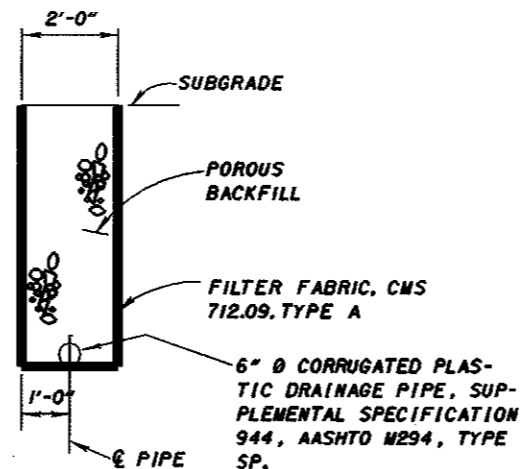
PILE TYPE, SIZE, SPACING, AND ESTIMATED PILE LENGTHS SHALL BE SHOWN ON THE PROJECT PLANS (USUALLY AS 12" OR 14" DIAMETER CAST-IN-PLACE REINFORCED CONCRETE, OR AS 10" OR 12" STEEL "H" PILES. SPACING SHALL NOT EXCEED 8'-0"). THE PILE DESIGN LOADS SHALL BE GIVEN IN THE STRUCTURE GENERAL NOTES.

REINFORCING STEEL: THE LONGITUDINAL NO. 10, NO. 8, AND NO. 5 BARS AT THE OPTION OF THE CONTRACTOR, MAY BE FURNISHED EITHER IN ONE LENGTH AS SHOWN HEREON, OR SPLICED. IF THE SPLICE OPTION IS CHOSEN, THE NO. 10 BAR SHALL BE LAPPED 9'-3", THE NO. 8 BAR SHALL BE LAPPED 5'-9" AND THE NO. 5 BAR SHALL BE LAPPED 2'-11". A STAGGERED LAP SPLICE ARRANGEMENT SHALL BE USED. PAYMENT FOR THE REINFORCING SHALL BE THE PLAN QUANTITY. DO NOT ADJUST THE PLAN QUANTITY TO INCLUDE BAR WEIGHTS FURNISHED TO PROVIDE LAP SPLICES.

LEGEND
 % = OUT TO OUT

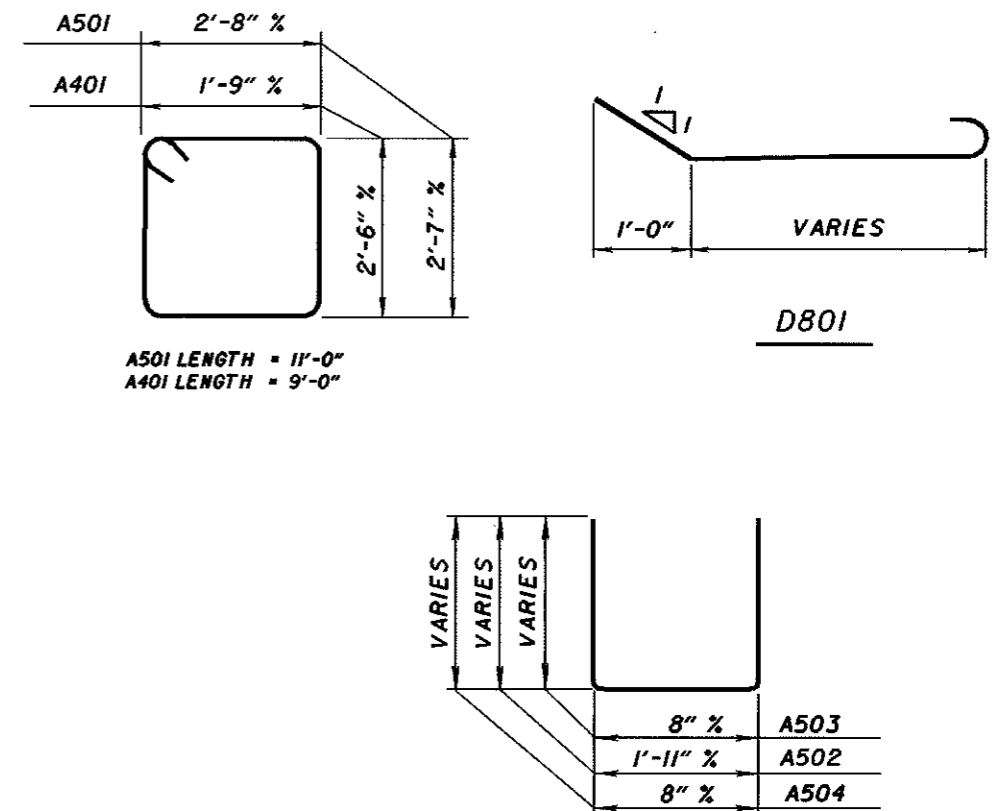


PART ELEVATION
 SHOWING DRAIN DETAILS
 (SEE SECTION B-B, SHEET 1/2 FOR ADDITIONAL DETAILS)



SECTION C-C

SEE SHEET 1/2 FOR LOCATION OF SECTION C-C



DESIGN AGENCY: BUREAU OF BRIDGES, STRUCTURAL DESIGN
 STATE OF OHIO DEPARTMENT OF TRANSPORTATION
 ENGINEER OF BRIDGES: [Signature]
 DATE: 10-25-94
 REVIEWED: LMM
 CHECKED: SAM
 DESIGNED: JAM
 DRAWN: BDB
 CPD-5-94
 STANDARD: CAPPED PILE ABUTMENT
 NO. 2