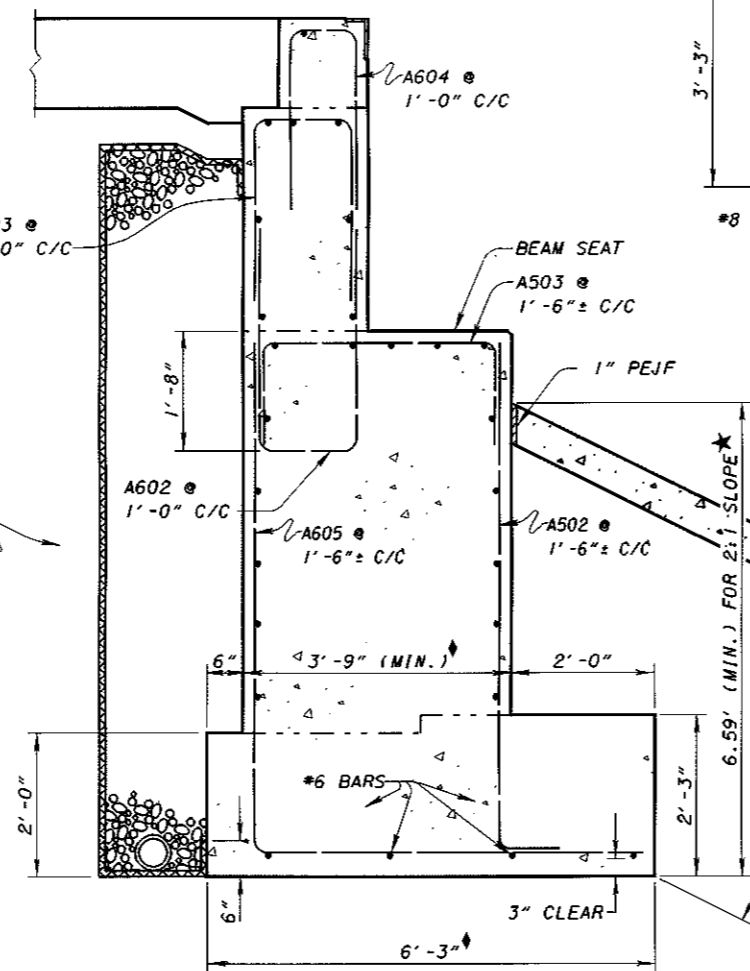


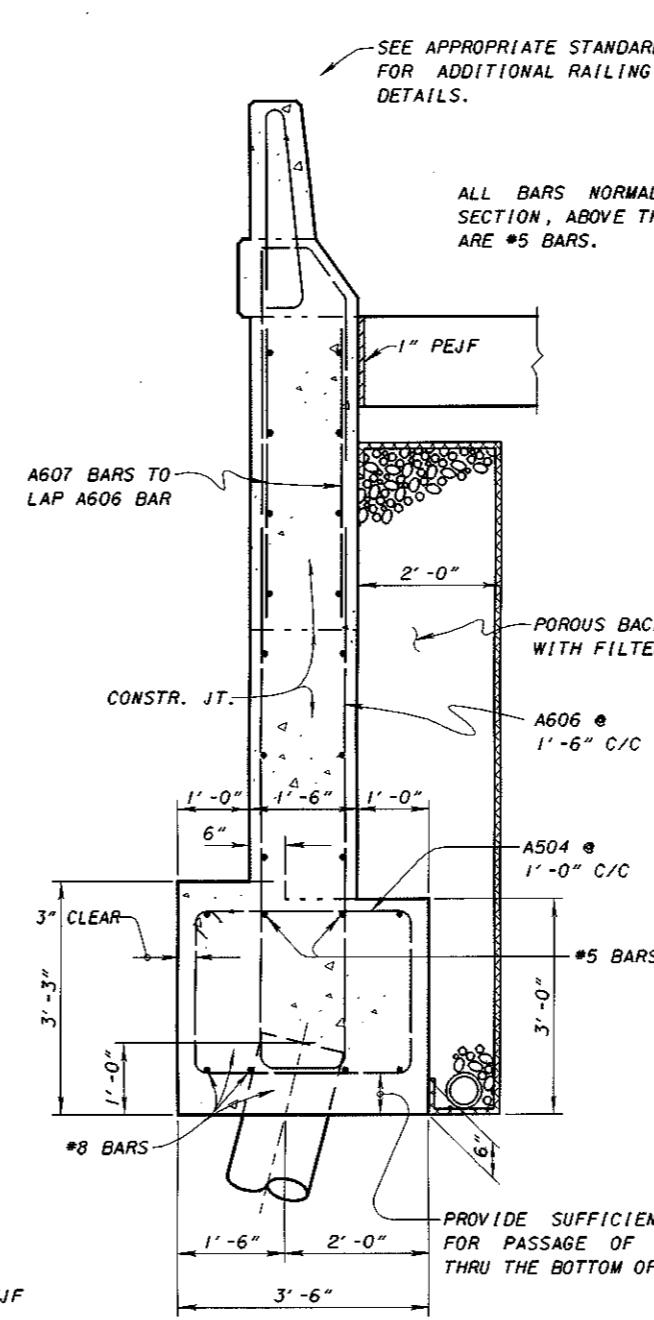
* - BARS SHALL BE EQUALLY SPACED BETWEEN PILES AT 1'-6" MAXIMUM.

**SECTION A-A
WITH PILES**

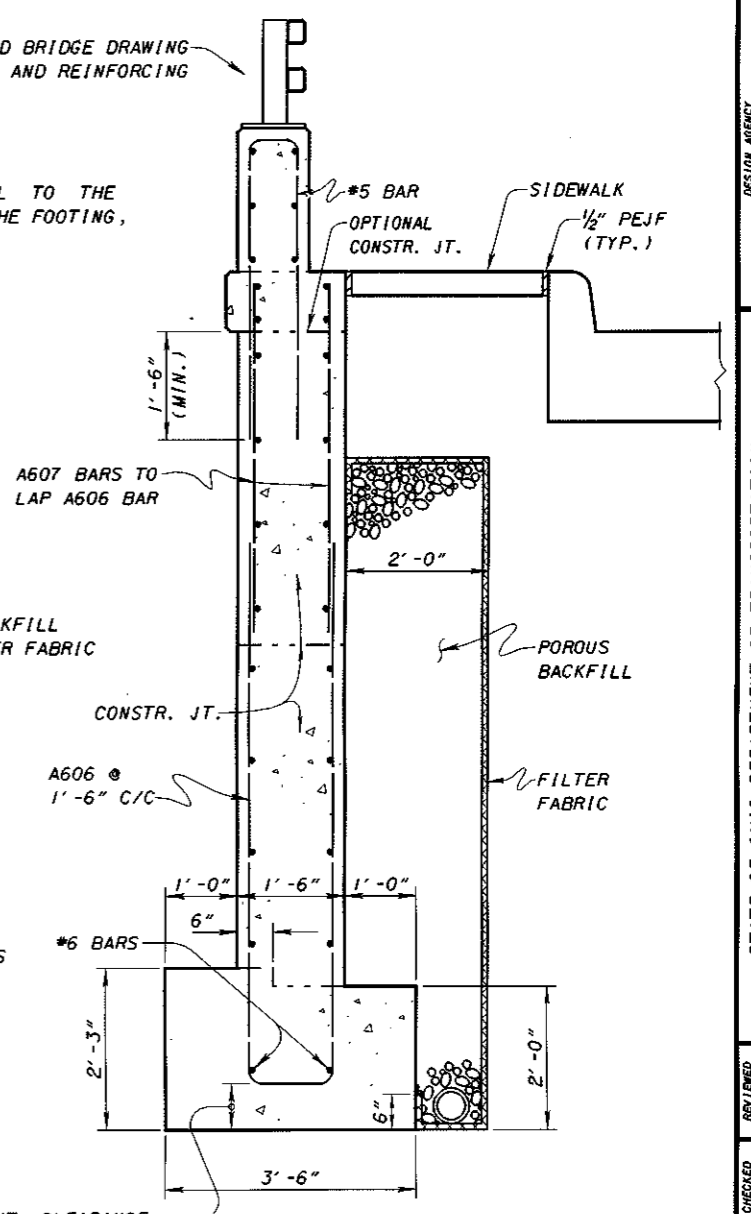
ALL BARS NORMAL TO THE SECTION, ABOVE FOOTING, ARE #5 BARS.



**SECTION A-A
WITHOUT PILES**



**SECTION C-C
WITH PILES**



**SECTION E-E
WITHOUT PILES**

NOTES & LEGEND

1. THE MAXIMUM SPACING FOR PILES IN THE FRONT ROW SHALL BE 8'-0". USUALLY PILES IN THE BACK ROW SHALL BE PLACED DIRECTLY BEHIND ALTERNATE FRONT ROW PILES.
2. THE CONCRETE COVER SHALL BE 2" UNLESS OTHERWISE NOTED.
3. FOR FOOTINGS WITHOUT PILES FOUNDED ON BEDROCK WHERE THE TOP OF BEDROCK ELEVATION IS NEAR THE BEAM SEAT ELEVATION, A SPECIAL DESIGN IS REQUIRED. THE MINIMUM BEDROCK EMBEDMENT SHALL BE 3".
4. SEE SHEET 5/5 FOR WINGWALL SEALING LIMITS.

PEJF - PREFORMED EXPANSION JOINT FILLER

- ☆ - 4'-0" MINIMUM WHEN FOUNDED IN COMPETENT BEDROCK.
- ★ - 5.47' MINIMUM WHEN FOUNDED IN COMPETENT BEDROCK.