

GENERAL NOTES

DESIGN SPECIFICATIONS: THIS STANDARD DRAWING CONFORMS TO "STANDARD SPECIFICATIONS FOR HIGHWAY BRIDGES" ADOPTED BY THE AMERICAN ASSOCIATION OF STATE HIGHWAY AND TRANSPORTATION OFFICIALS, 1996, INCLUDING THE 1997, 1998 AND 1999 INTERIM SPECIFICATIONS AND THE ODOT BRIDGE DESIGN MANUAL.

DESIGN LOADING: HS25 AND THE ALTERNATE MILITARY LOADING

DESIGN DATA: CONCRETE CLASS C - COMPRESSIVE STRENGTH 4000 P.S.I. (SUBSTRUCTURE)
REINFORCING STEEL -ASTM A615, A616 OR A617, EPOXY COATED, GRADE 60 MINIMUM YIELD STRENGTH 60,000 P.S.I.

DESIGN INSTRUCTIONS

GENERAL : THIS DRAWING PROVIDES DESIGN AND GENERAL CONSTRUCTION DETAILS. THE PROJECT PLANS FOR EACH STRUCTURE SHALL SHOW STATIONS, SPAN LENGTHS, ROADWAY WIDTH, SKEW, CURVE AND SUPERELEVATION DATA (IF ANY), ELEVATIONS, SUPERSTRUCTURE DETAILS, ESTIMATED QUANTITIES, REINFORCING STEEL LIST, AREAS OF SEALING, TYPE OF SEALER AND OTHER NECESSARY DETAILS AND SPECIAL NOTES.

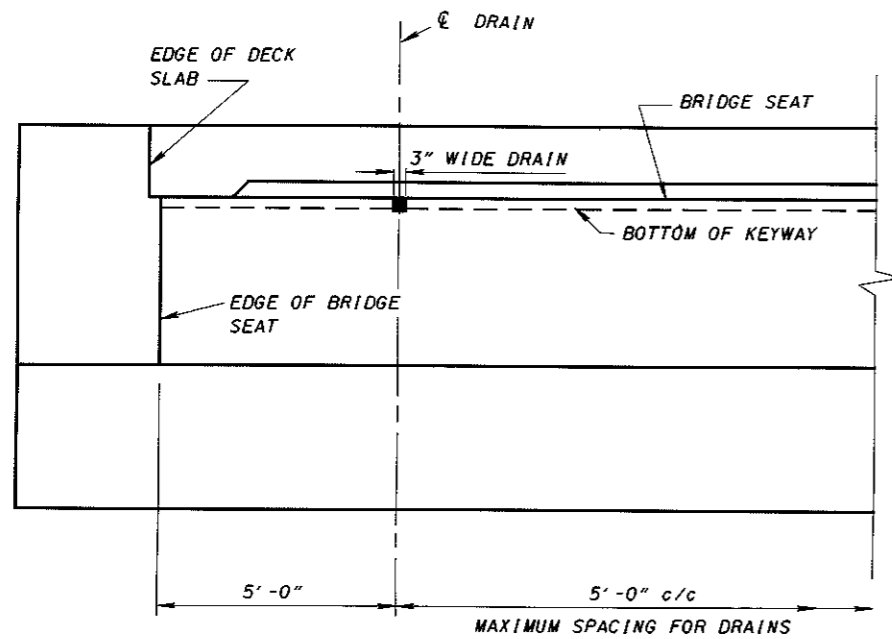
PILE TYPE, SIZE, SPACING, AND ESTIMATED PILE LENGTHS:

SHALL BE SHOWN ON THE PROJECT PLANS (USUALLY AS 12" OR 14" DIAMETER CAST-IN-PLACE REINFORCED CONCRETE, OR AS 10" OR 12" STEEL "H" PILES. SPACING SHALL NOT EXCEED 8'-0". THE ULTIMATE BEARING VALUE PER PILE SHALL BE GIVEN IN THE STRUCTURAL GENERAL NOTES.

REINFORCING STEEL: THE LONGITUDINAL NO. 10, NO. 8 AND NO. 5 BARS AT THE OPTION OF THE CONTRACTOR AND AT NO ADDITIONAL COST TO THE STATE, MAY BE FURNISHED EITHER IN ONE LENGTH AS SHOWN HEREON, OR SPLICED. IF THE SPLICE OPTION IS CHOSEN, THE NO. 10 BAR SHALL BE LAPPED 11'-1", THE NO. 8 BAR SHALL BE LAPPED 6'-5" AND THE NO. 5 BAR SHALL BE LAPPED 3'-7". A STAGGERED LAP SPLICE ARRANGEMENT SHALL BE USED. THE REINFORCING SHALL BE INCLUDED WITH THE CONCRETE FOR PAYMENT.

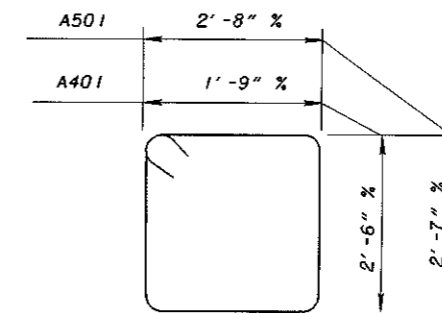
LEGEND

% - OUT TO OUT

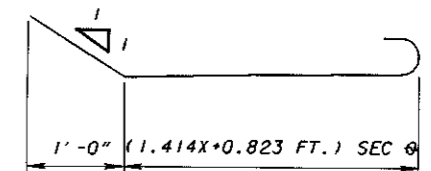


PART ELEVATION

SHOWING DRAIN DETAILS
(SEE SECTION B-B, SHEET 1/2 FOR ADDITIONAL DETAILS)

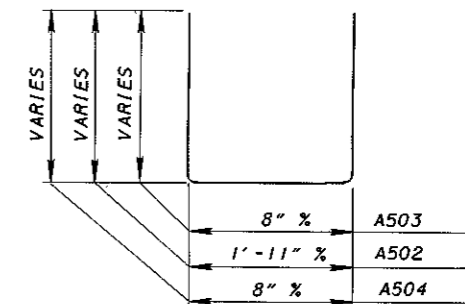


A501 LENGTH = 11'-0"
A401 LENGTH = 9'-0"



D801

X - THICKNESS OF APPROACH SLAB AT ABUTMENT END (FT.)
phi - ANGLE OF SKEW



DESIGN AGENCY: OFFICE OF STRUCTURAL ENGINEERING
 STATE OF OHIO DEPARTMENT OF TRANSPORTATION
 ENGINEER OF BRIDGES: [Signature]
 DATE: 10-25-94
 REVISIONS: 04-20-01 (JAM) DRAWN: BOB
 CHECKED: SAM
 REVIEWED: LHW
 STANDARD CAPPED PILE ABUTMENT FOR SLAB BRIDGES
 CPA-5-94