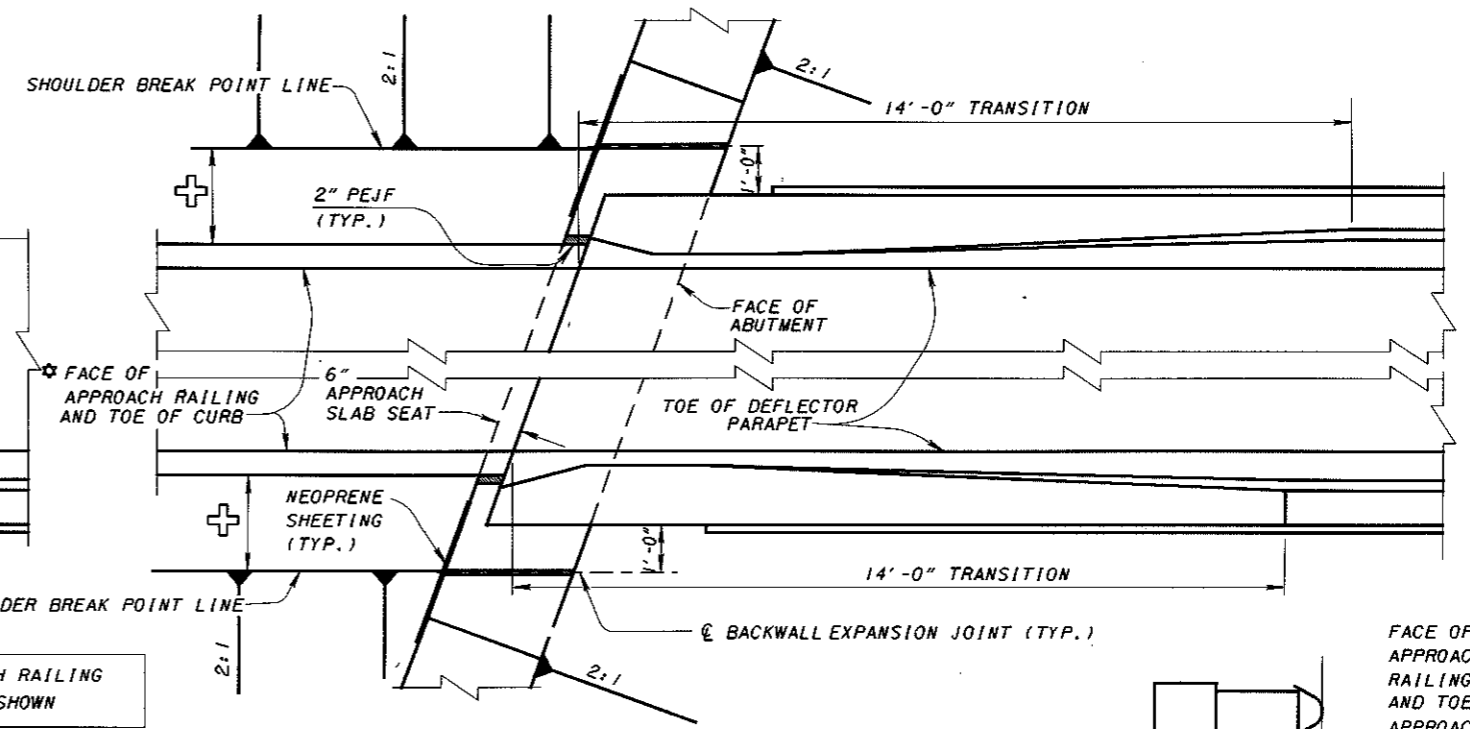


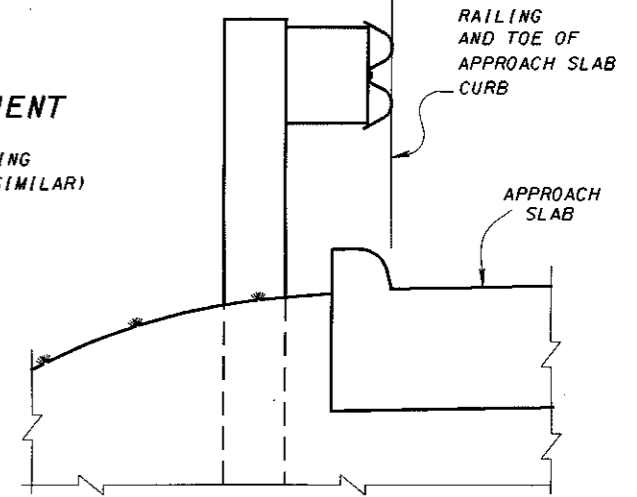
PART PLAN AT ABUTMENT
 SQUARE STRUCTURE WITH DEFLECTOR
 PARAPET TYPE RAILING
 (BR-1 SHOWN, SBR-1-99 SHALL BE SIMILAR)

⊕ SEE ROADWAY
 TYPICAL SECTION

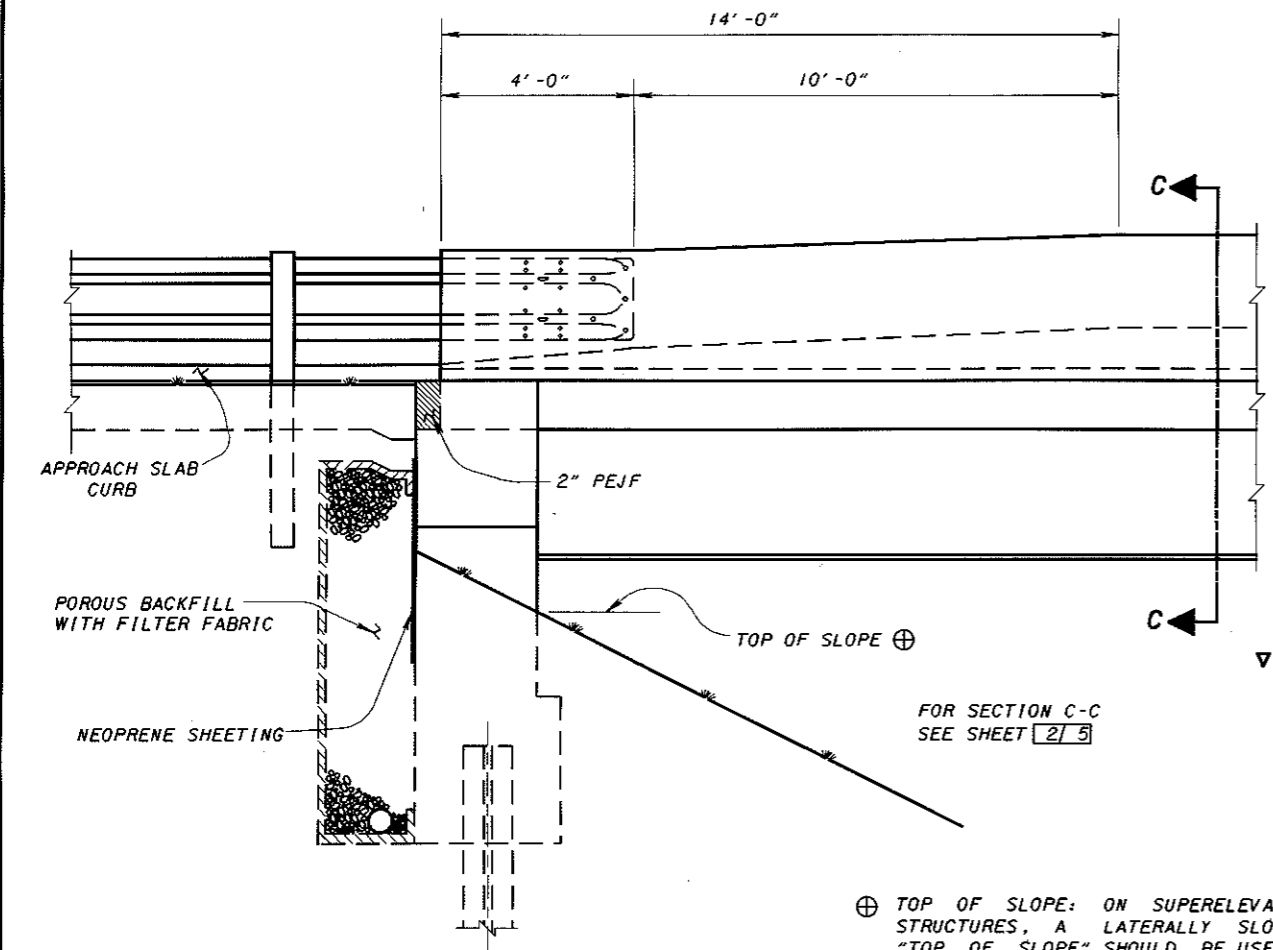
⊛ APPROACH RAILING
 NOT SHOWN



PART PLAN AT ABUTMENT
 SKEWED STRUCTURE WITH
 DEFLECTOR PARAPET TYPE RAILING
 (BR-1 SHOWN, SBR-1-99 SHALL BE SIMILAR)



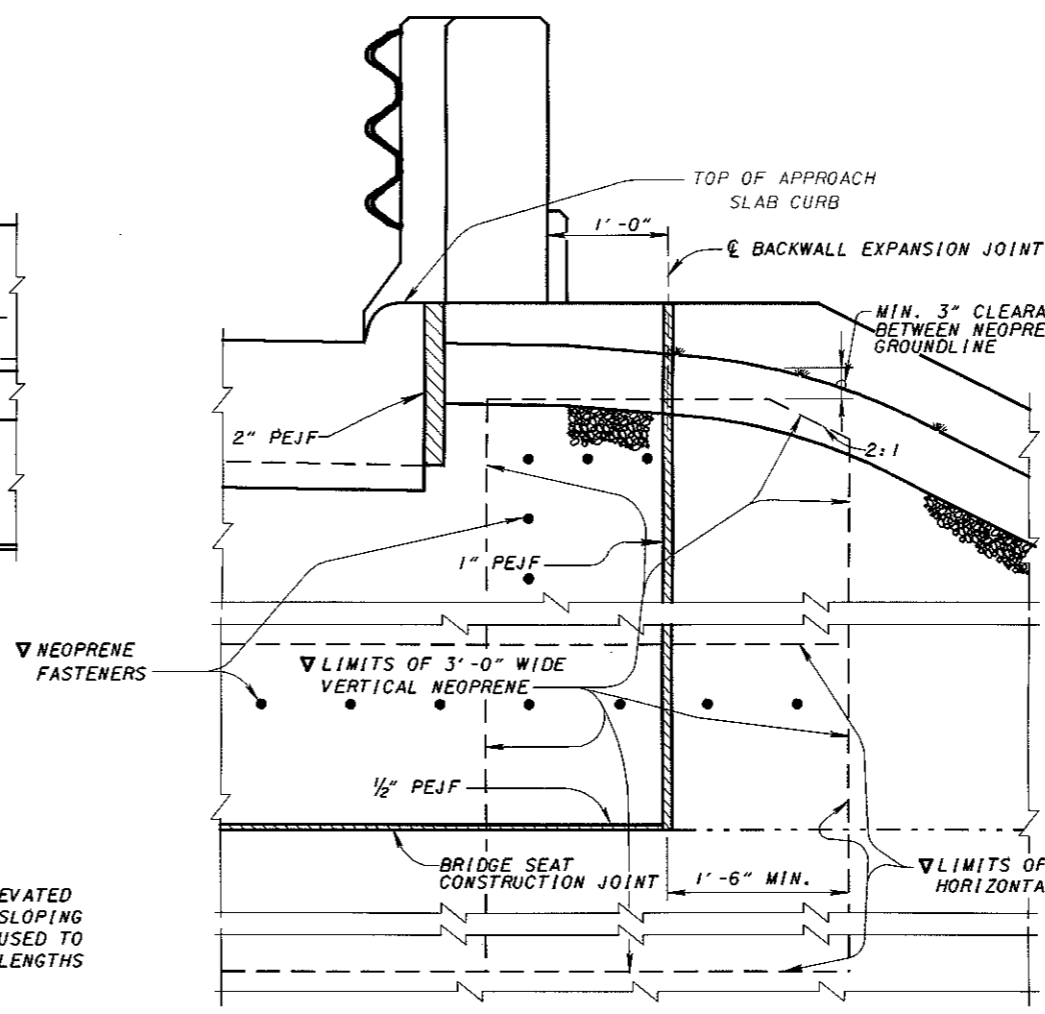
SECTION A-A



ELEVATION

⊕ TOP OF SLOPE: ON SUPERELEVATED
 STRUCTURES, A LATERALLY SLOPING
 "TOP OF SLOPE" SHOULD BE USED TO
 AVOID EXCESSIVELY LONG WING LENGTHS

FOR SECTION C-C
 SEE SHEET [2] [3]



SECTION B-B

▽ SEE PROJECT PLANS FOR ADDITIONAL NEOPRENE
 SHEETING PLACEMENT REQUIREMENTS

DESIGN AGENCY	OFFICE OF	STRUCTURAL ENGINEERING
STATE OF OHIO DEPARTMENT OF TRANSPORTATION	DATE	3-20-95
ADMINISTRATOR		
REVISIONS	ICD-1-82	
DESIGNED	MPB/MLM	AJM/MLM
CHECKED	RLD/JJS	
REVIEWED	WJ/LMW	
STANDARD	INTEGRAL CONSTRUCTION DETAILS FOR STEEL BEAM AND GIRDER BRIDGES ON FLEXIBLE ABUTMENTS	
		1/5