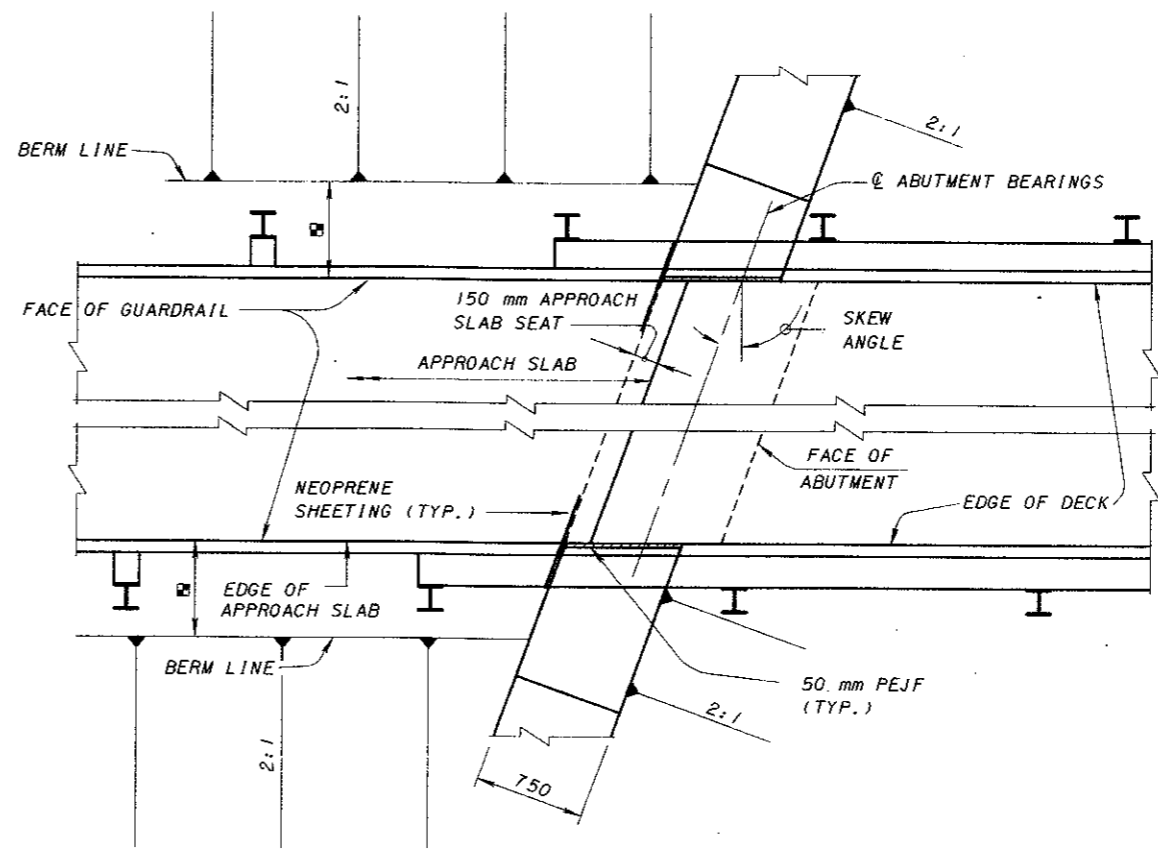
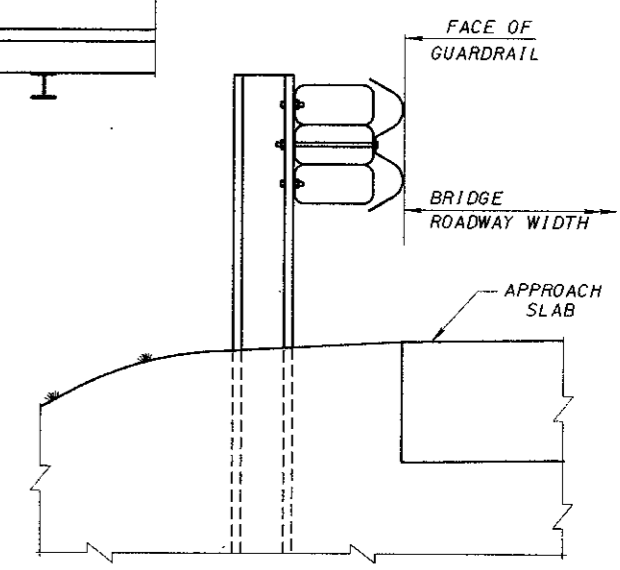


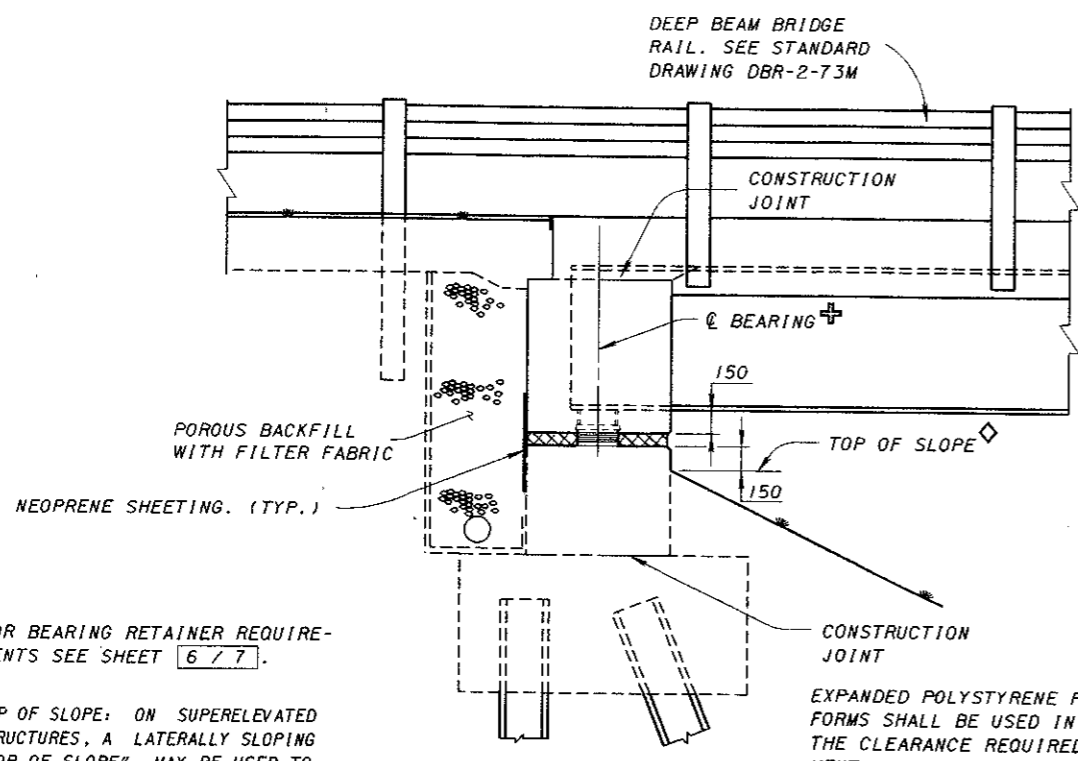
PART PLAN AT ABUTMENT
SQUARE STRUCTURE WITH DEEP BEAM RAILING



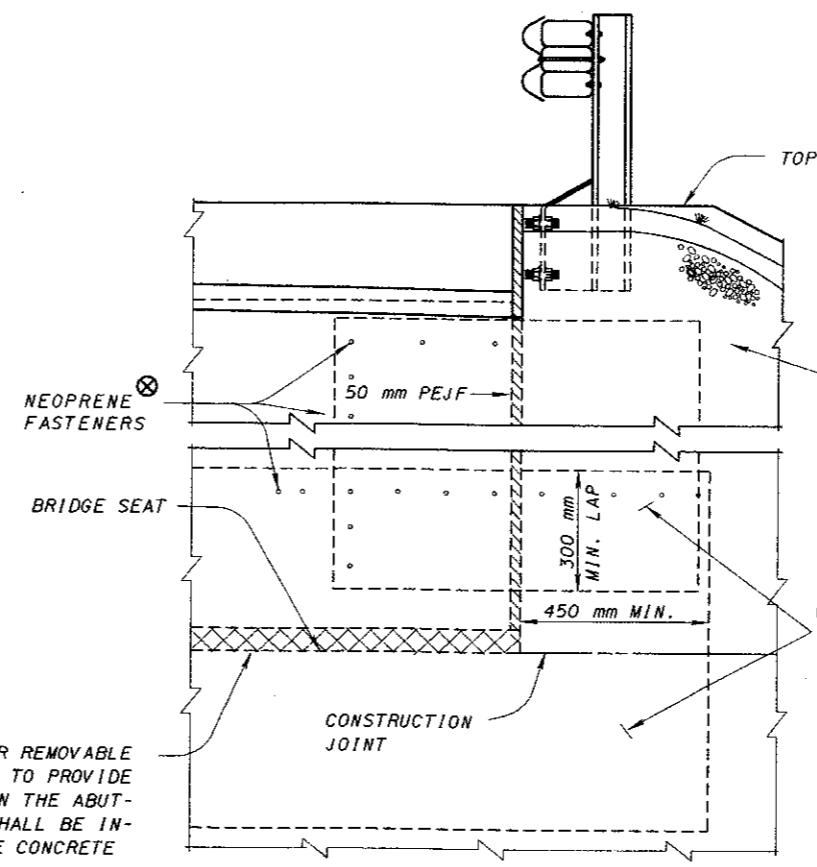
PART PLAN AT ABUTMENT
SKEWED STRUCTURE WITH DEEP BEAM RAILING



SECTION B-B



ELEVATION



SECTION C-C

SEE STANDARD CONSTRUCTION DRAWING
GR-3.3M FOR BRIDGE TERMINAL ASSEMBLIES.
SEE SHEET 1/7 FOR ADDITIONAL DETAILS
AND NOTES.

⊗ SEE SHEET 7/7 FOR NEOPRENE
SHEETING PLACEMENT REQUIREMENTS.

⊕ FOR BEARING RETAINER REQUIREMENTS SEE SHEET 6/7.

◇ TOP OF SLOPE: ON SUPERELEVATED STRUCTURES, A LATERALLY SLOPING "TOP OF SLOPE" MAY BE USED TO AVOID EXCESSIVELY LONG WING WALL LENGTHS.

■ SEE ROADWAY TYPICAL SECTION.

EXPANDED POLYSTYRENE FILLER OR REMOVABLE FORMS SHALL BE USED IN FORMING TO PROVIDE THE CLEARANCE REQUIRED BETWEEN THE ABUTMENT AND SUPERSTRUCTURE AND SHALL BE INCLUDED WITH THE SUPERSTRUCTURE CONCRETE FOR PAYMENT