

CLEARANCE PROVIDED FROM EACH END OF BEARING RETAINER SHALL BE 75 mm WHICH ALLOWS FOR MAXIMUM EXPANSION LENGTH OF 80 000 mm PLUS AN ADDITIONAL 25 mm FOR CLEARANCE.

**BEARING RETAINER FOR
 $30^\circ < \text{SKEW ANGLE} \leq 45^\circ$**

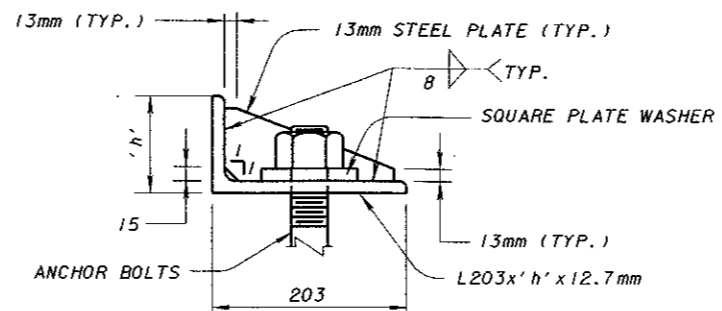
PLACE RETAINER ASSEMBLY ON ACUTE ANGLE SIDE OF BEARINGS.

NOTE:

HP STEEL SHAPE INCLUDED WITH ITEM 516 ELASTOMERIC BEARING FOR PAYMENT.

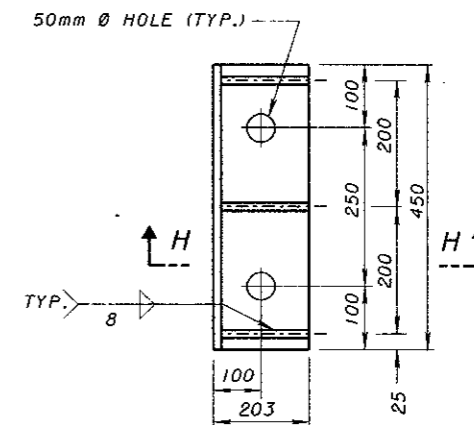
38mm DIAMETER ANCHOR BOLTS WITH NUT AND 100mm x 100mm x 13mm SQUARE PLATE WASHER WITH 45 mm DIAMETER HOLES. WHEN FIELD DRILLING GROUT WITH EPOXY NONSHRINKING GROUT IN 45mm X 250mm DEEP HOLES.

REINFORCING STEEL IN THE VICINITY OF THE BEARING RETAINER SHALL BE ACCURATELY PLACED TO AVOID INTERFERENCE WITH THE DRILLING OF BEARING RETAINER ANCHOR HOLES OR THE PRE-SETTING OF THE BEARING RETAINING ANCHORS.



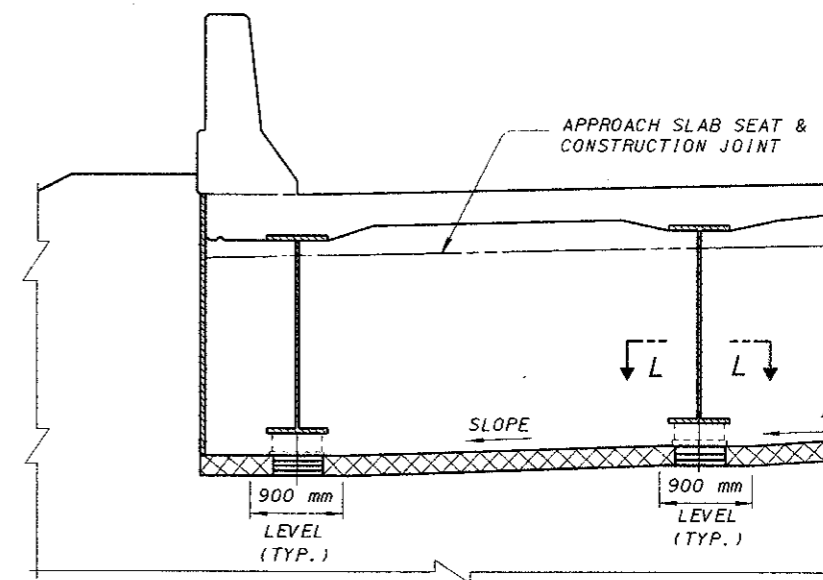
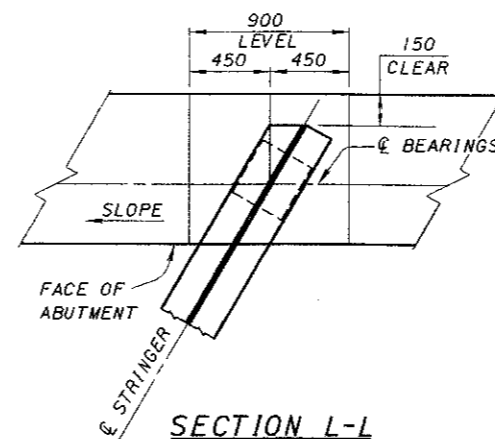
* DIMENSION 'h' VARIES AND SHALL BE EQUAL TO ELASTOMERIC BEARING HEIGHT + LOAD PLATE THICKNESS BUT SHALL NOT BE LESS THAN 75 mm.

SECTION H-H

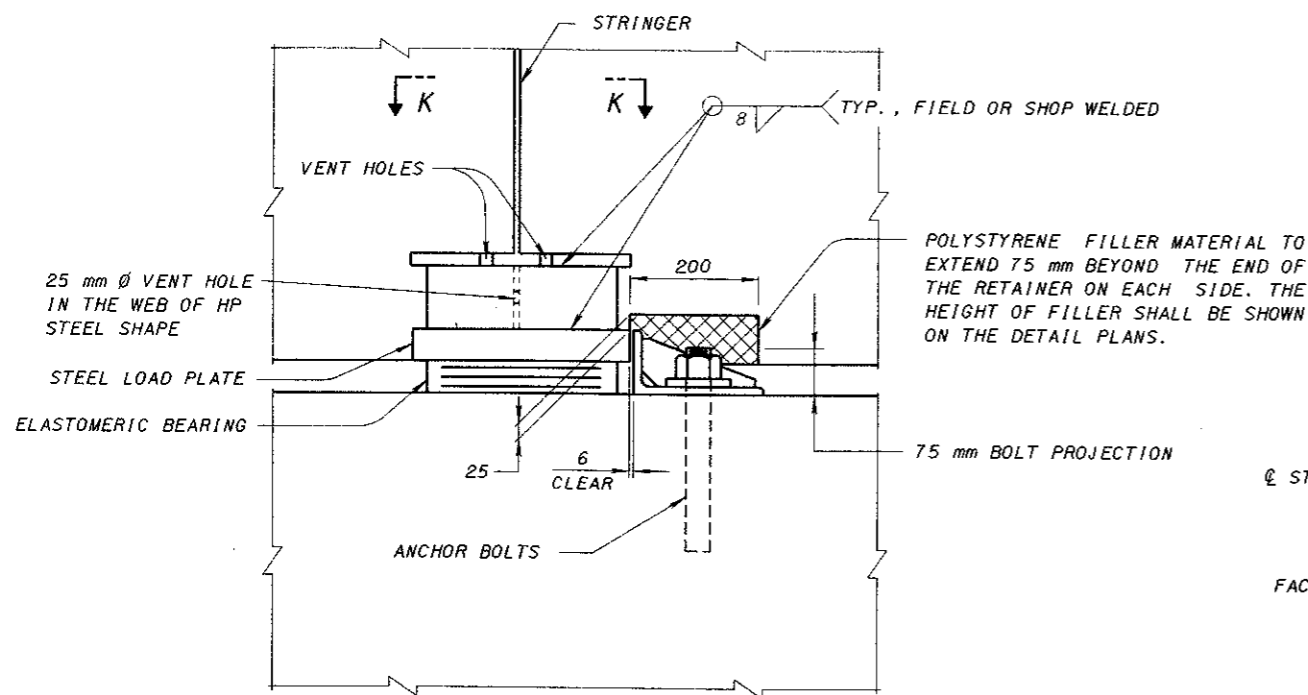


BEARING RETAINER ASSEMBLY

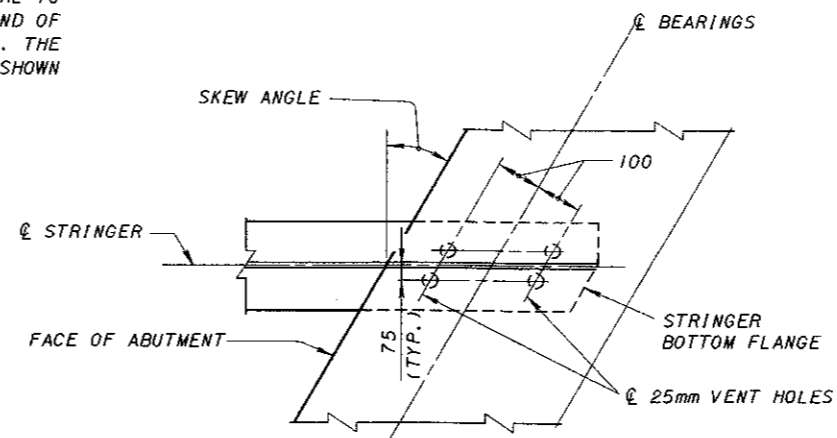
SEE SHEET 777 FOR PLACEMENT INSTRUCTIONS



PART ELEVATION OF BEAM SEAT



SECTION J-J



SECTION K-K

DESIGN AGENCY	OFFICE OF	STRUCTURAL ENGINEERING
STATE OF OHIO DEPARTMENT OF TRANSPORTATION	ADMINISTRATOR	2-12-97 DATE
REVIEWED	LMW	
CHECKED	MRC/JJS	
DESIGNED	WLF	SICD-1-96M
STANDARD	CONSTRUCTION DETAILS	
6	7	