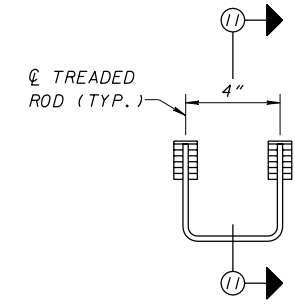
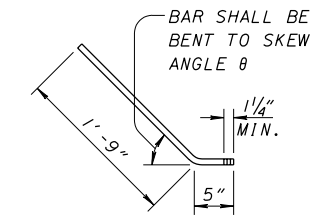


**SINGLE THREADED INSERT**  
(3,000 LB PROOF LOAD)

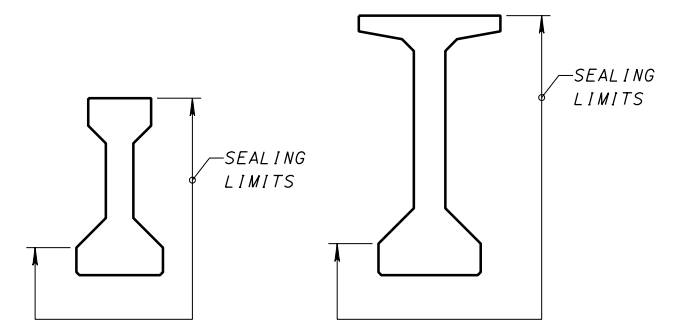


**DOUBLE THREADED INSERT**  
(6,000 LB PROOF LOAD)

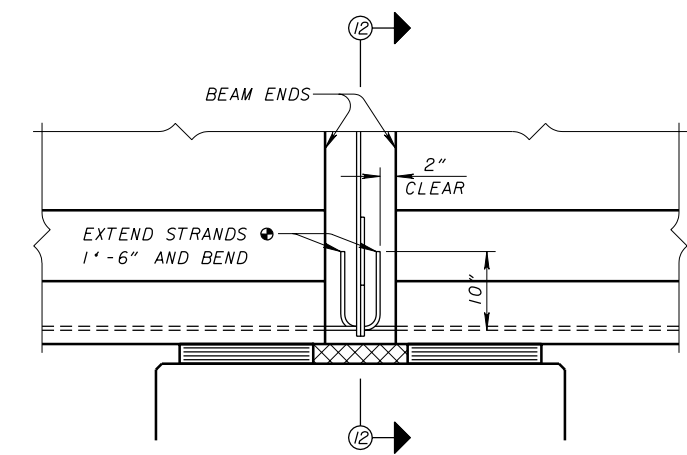
NOTE - THE GIRDER FABRICATOR MAY USE DOUBLE THREADED INSERTS IN LIEU OF TWO SINGLE INSERTS SPACED AT 4" ON CENTER AT THE CONCRETE INTERMEDIATE DIAPHRAGM LOCATIONS.



**3/4" DIA. x 2'-2" THREADED ROD**  
SHALL CONFORM TO 709.01, 709.03 OR 709.05 WITH THREADS FORMED PRIOR TO GALVANIZING.

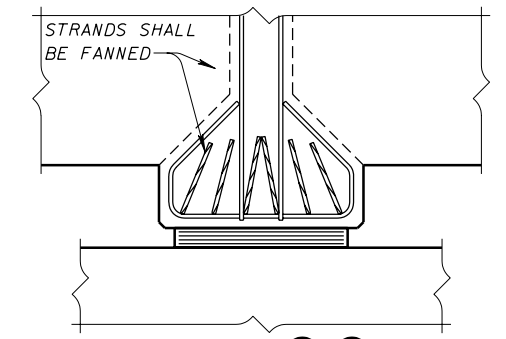


**SEALING OF FASCIA BEAMS**



**EXTENDED STRAND DETAIL**

• - THE NUMBER OF STRANDS TO BE BENT SHALL BE THE LARGER OF ONE HALF THE NUMBER OF ROW 1 STRANDS OR THE NUMBER OF STRANDS SUFFICIENT TO RESIST THE POSITIVE LIVE LOAD MOMENT AT THE PIER. ALTERNATE STRANDS IN ABUTTING BEAMS TO AVOID INTERFERENCE.



**SECTION 12-12**  
(PARTIAL PIER AND DIAPHRAGM SHOWN)

DESIGN AGENCY OFFICE OF STRUCTURAL ENGINEERING	
STATE OF OHIO DEPARTMENT OF TRANSPORTATION ADMINISTRATOR <i>Bruce Fogwell</i>	DATE 09-07-99
REVISIONS 10-20-00 07-19-02 07-18-03 04-20-07	DESIGNED SAM DRAWN SAM
CHECKED J.S./WTL	REVIEWED L.M.W.
PS10-1-99	
STANDARD PRESTRESSED CONCRETE I-BEAM BRIDGE DETAILS	
7	8