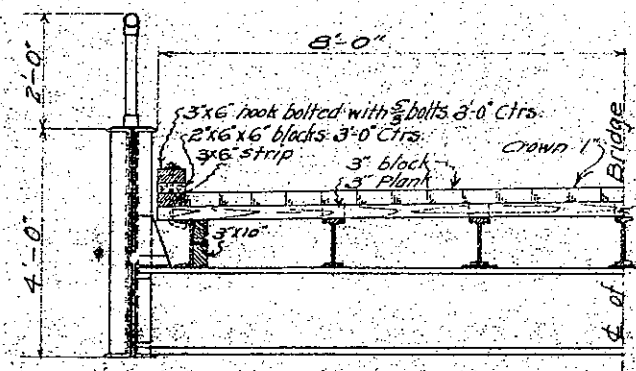


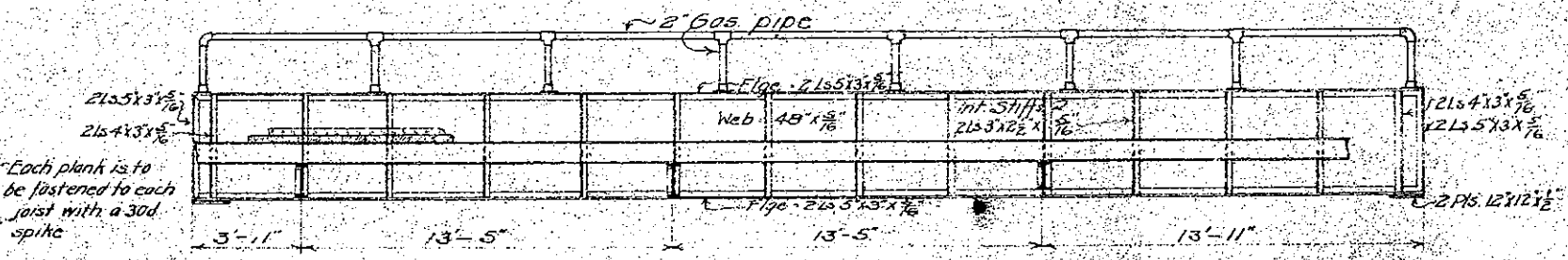
MICROFILMED
FEB 28 1979
REPRODUCTION

SECTION C-D

PLAN



HALF CROSS SECTION



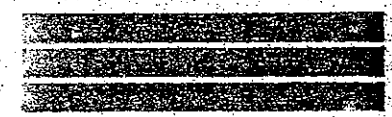
LONGITUDINAL SECTION A-B

SPECIFICATIONS
All material and workmanship shall conform to General Specifications for Steel Highway Bridges of the State Highway Department of Ohio.

ESTIMATED QUANTITIES

Steel	20800 lbs.
Creosoted lumber	2600 B.M.
Creosoted 3" block	71 2/3 Sq Yds
Gas pipe Railing	88 Lin. Ft.

Adopted



Commissioners of
Hancock County, O.

Approved: *James R. Warner*
State Highway Commissioner

SKIEW PLATE GIRDER BRIDGE
CLEAR SPAN 41 Ft. - 16 Ft. ROADWAY
CLASS C LOADING
WOOD BLOCK FLOOR
STATE HIGHWAY DEPARTMENT
COLUMBUS, O.

997

SEPT 19 1913

BUREAU OF BRIDGES

Designed by J.B. [Signature]