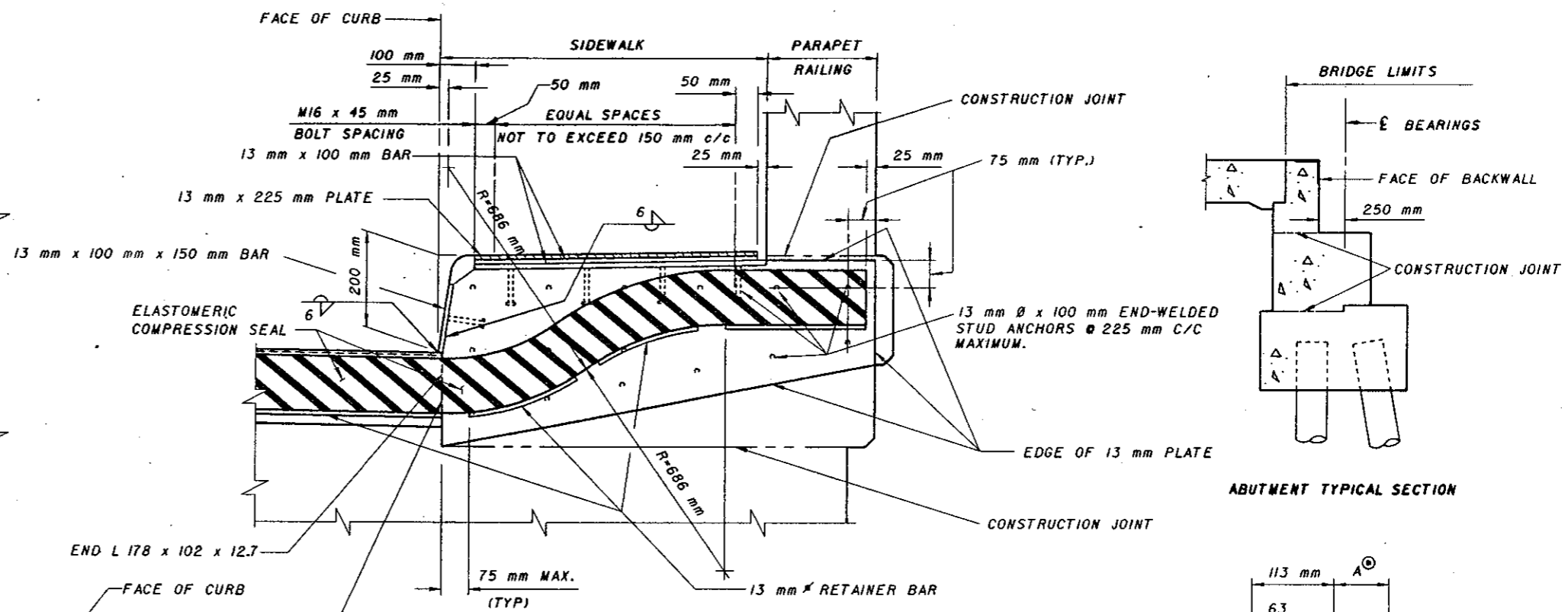
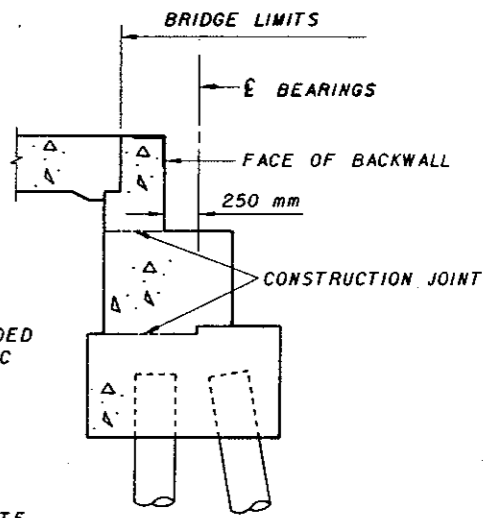


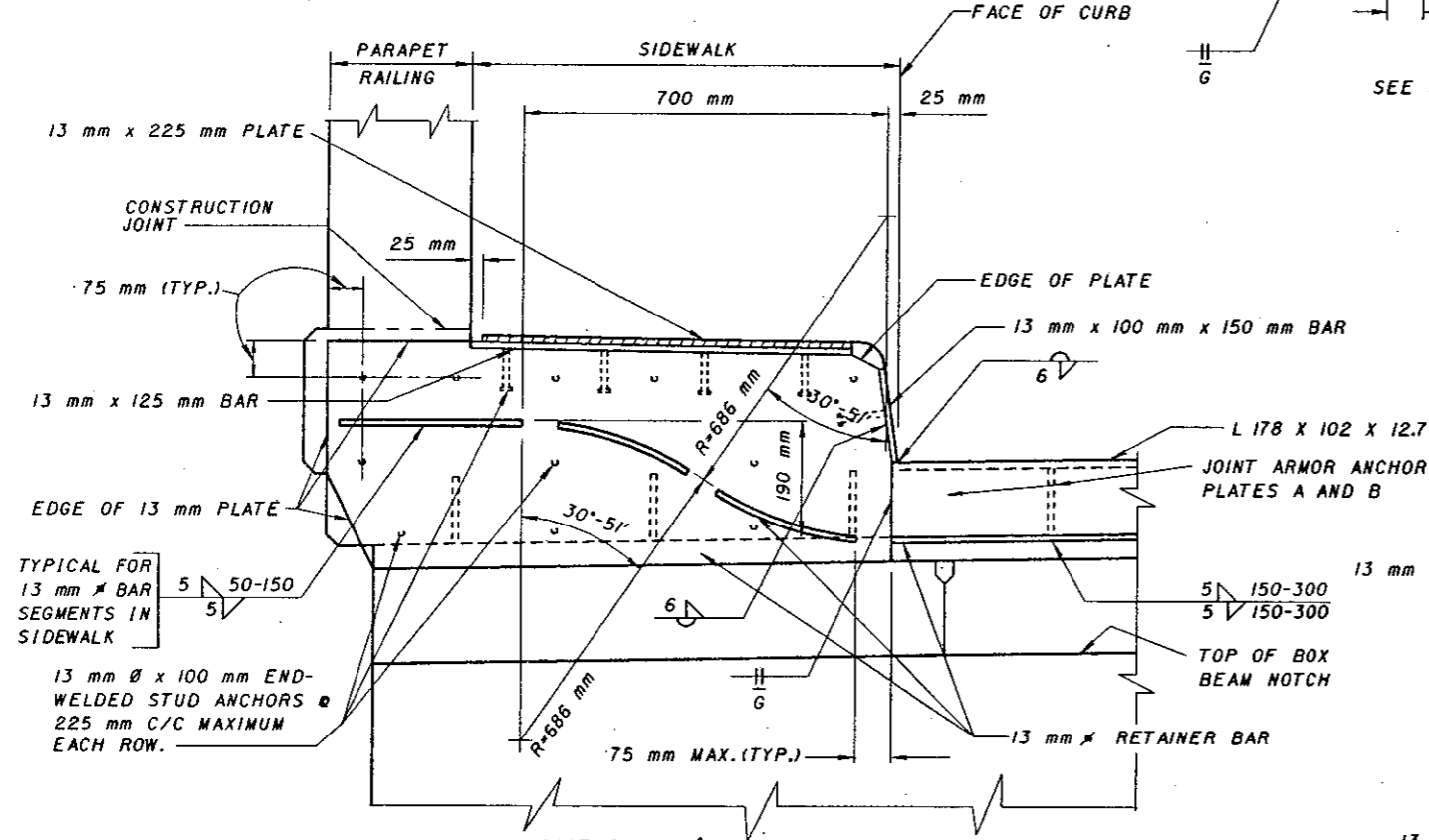
PART PLAN AT ABUTMENT FOR BRIDGES WITH SIDEWALK PARAPET RAILING



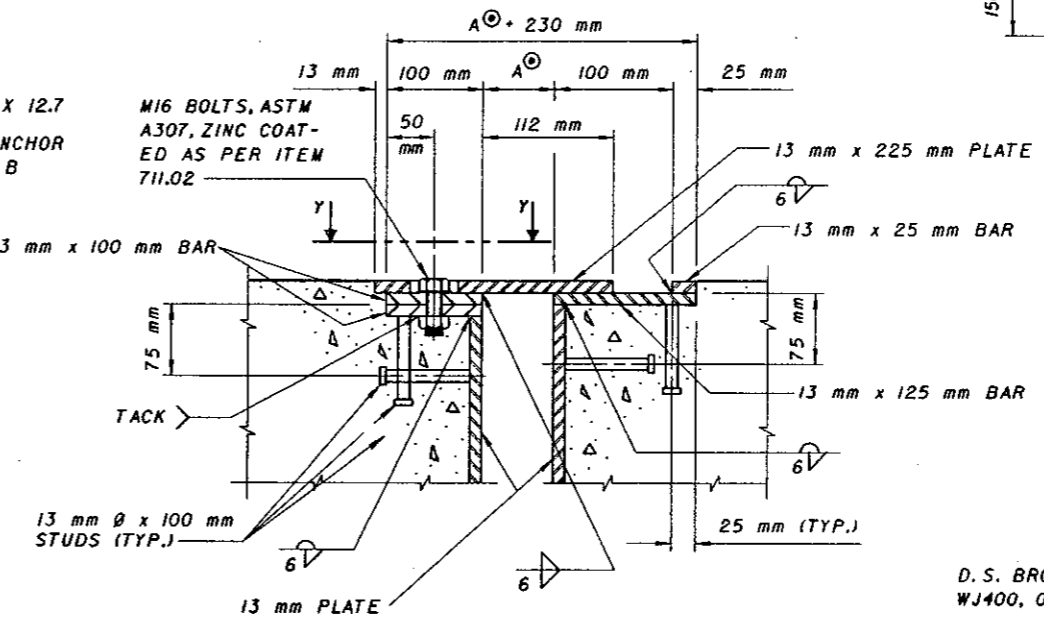
SECTION D-D
SEE SECTION E-E FOR OTHER DETAILS NOT SHOWN



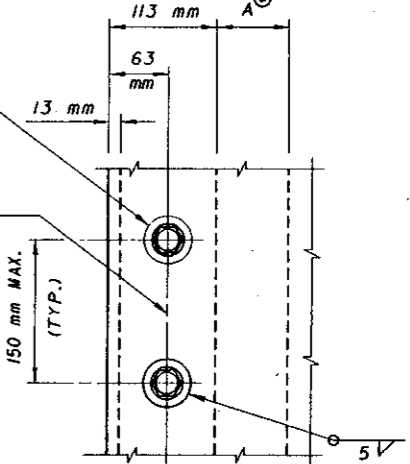
ABUTMENT TYPICAL SECTION



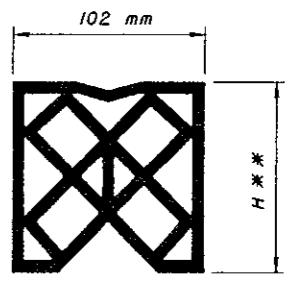
SECTION E-E
SEAL NOT SHOWN



SECTION F-F



VIEW Y-Y



COMPRESSION SEAL DETAIL
D. S. BROWN'S CV4000, WATSON BOWMAN ACME'S WJ400, OR AN APPROVED ALTERNATE.

▲ SIDEWALK AND PARAPET JOINT ARMOR ANCHORS: IN LIEU OF THE 13 mm Ø END-WELDED STUDS SHOWN, ALTERNATE METHODS OF ANCHORING THE JOINT ARMOR MAY BE USED, SUBJECT TO APPROVAL BY THE DIRECTOR.

LEGEND:
R = RADIUS

NOTE:
WHERE Ɛ FASCIA BOX BEAM IS OUTSIDE OF CURB LINE, JOINT ARMOR ANCHOR PLATES SHALL BE WELDED TO 13 mm PLATE.

SEE SHEET 174 FOR CONSTRUCTION PROCEDURE, SECTION A-A AND ADDITIONAL DETAILS.

SEE SHEET 374 FOR GENERAL NOTES AND NOTES TO DESIGNER.

** SEE MANUFACTURER'S CATALOG FOR SEAL ACTUALLY CHOSEN FOR USE.

DESIGN AGENCY	BUREAU OF BRIDGES AND STRUCTURAL DESIGN
STATE OF OHIO DEPARTMENT OF TRANSPORTATION	DATE 3-20-95
ENGINEER OF BRIDGES	Richard J. Engel
DESIGNED	RLD/MGP
CHECKED	MPB/JAM/RLD/LMW
REVIEWED	JAM/BDB
EX-3-82M	
STANDARD	COMPRESSION SEAL EXPANSION JOINTS AT ABUTMENTS FOR PRESTRESSED BOX BEAM STRUCTURE-METRIC
2	4