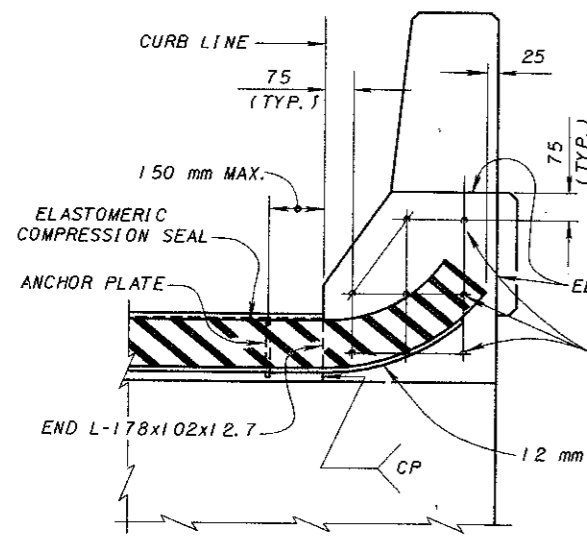
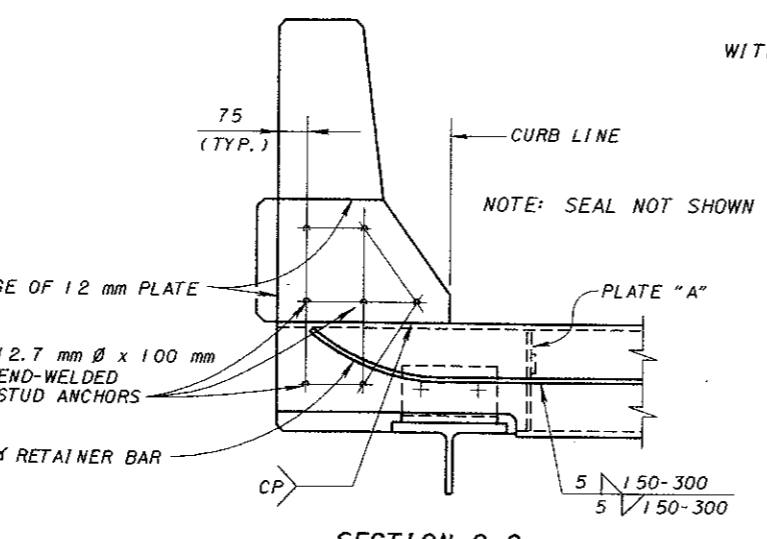


PART PLAN AT ABUTMENT
FOR BRIDGES WITH DEFLECTOR PARAPET RAILING

JOINTS IN END DAM ARMOR
TRANSVERSE JOINTS IN SUPERSTRUCTURE ANGLES OR CHANNEL SHALL HAVE COMPLETE PENETRATION BUTT WELDS. TRANSVERSE JOINTS IN ABUTMENT ANGLE SHALL BE CLOSELY BUTTED WITH A MINIMUM OF 1800 mm BETWEEN JOINTS. WELDS IN CONTACT WITH SEAL SHALL BE GROUND FLUSH.

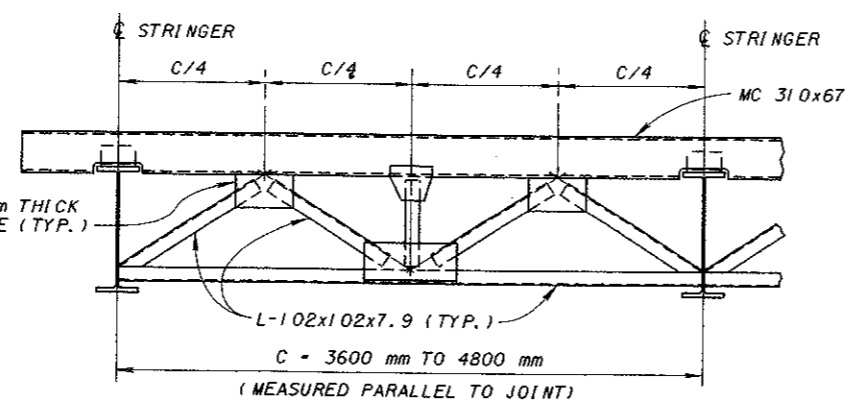
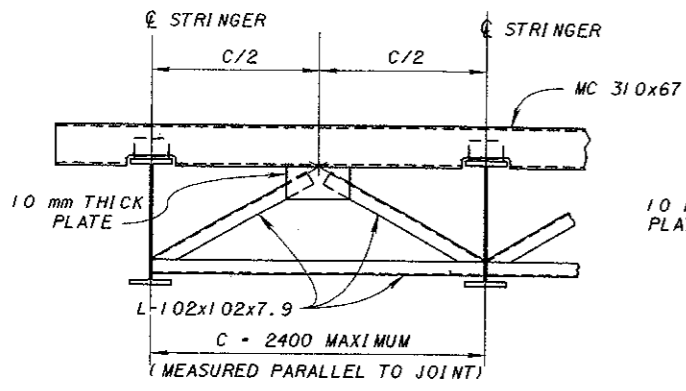


SECTION B-B

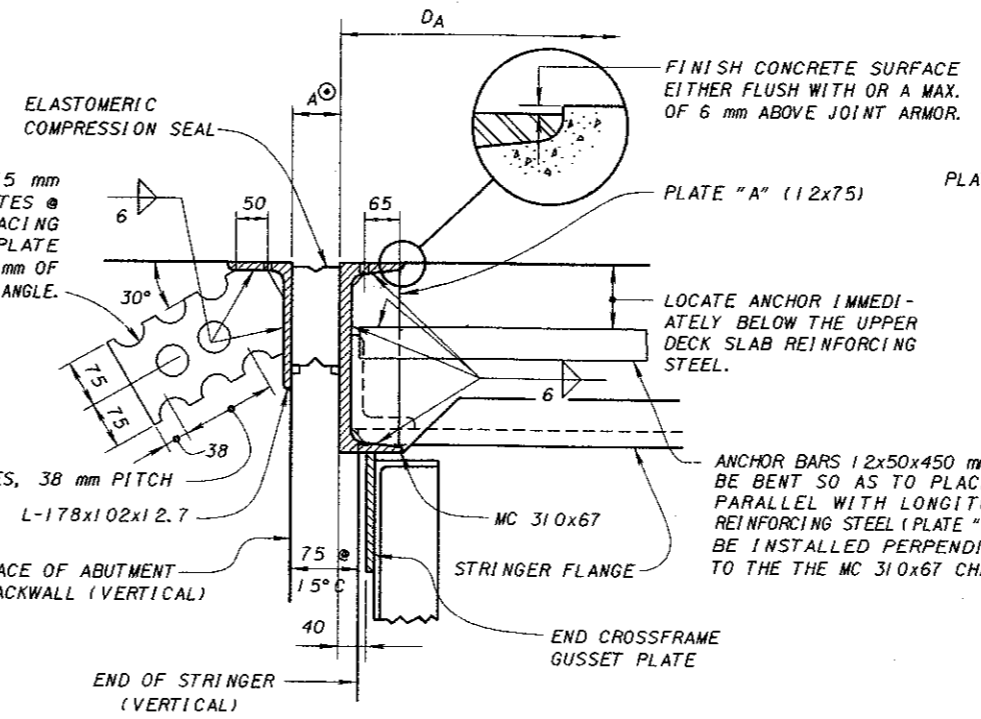


SECTION C-C

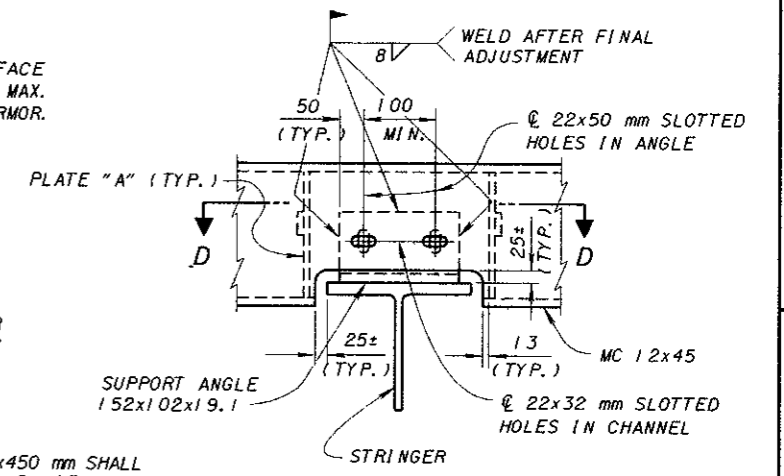
SEE SECTION B-B FOR ADDITIONAL DETAILS



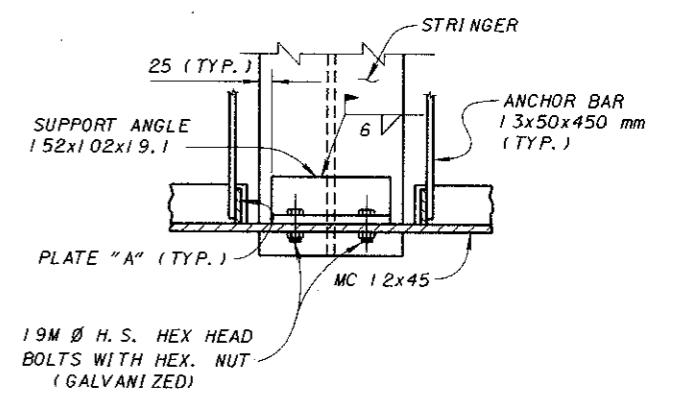
END CROSSFRAME DETAILS
STEEL RETAINERS ARE NOT SHOWN



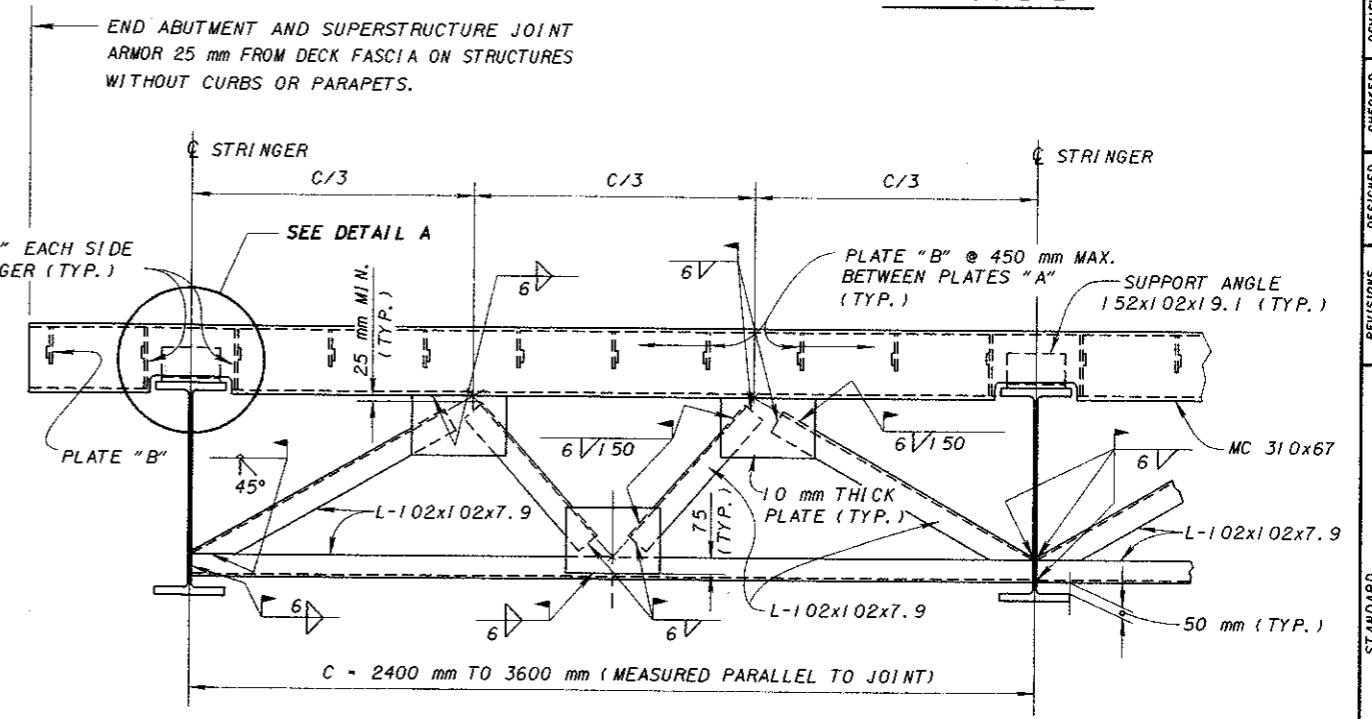
SECTION A-A
WITH ROADWAY GRADIENT OF 2% OR LESS SHOWN



DETAIL A



SECTION D-D



NOTE: THE WELDING SYMBOLS SHOWN ABOVE ARE TYPICAL FOR ALL SIMILAR LOCATIONS OF THIS END CROSSFRAME. ALSO, THE WELDED ATTACHMENT DETAILS AND TYPICAL DIMENSIONS SHOWN ARE TYPICAL FOR THE CROSSFRAMES DETAILED AT LEFT.

FOR DIMENSIONS A[⊙], D_A, ADDITIONAL NOTES AND DETAILS SEE SHEETS 2/3 AND 3/3.

DESIGN AGENCY	BUREAU OF BRIDGES AND STRUCTURAL DESIGN
STATE OF OHIO DEPARTMENT OF TRANSPORTATION	DATE 3-20-95
ENGINEER OF BRIDGES	ENGINEER OF BRIDGES
REVIEWED	WTL/LW
CHECKED	JS/JAM
DESIGNED	AJM/MPB
DRAWN	AJM/BOB
REVISIONS	2-14-97
STANDARD	COMPRESSION SEAL EXPANSION JOINTS AT ABUTMENTS FOR STEEL STRINGER STRUCTURES
PROJECT	EKJ-2-81M
SHEET	1/3