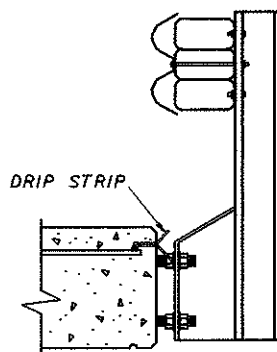
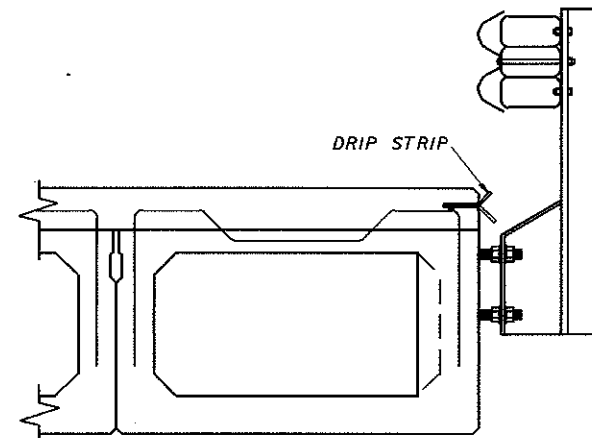


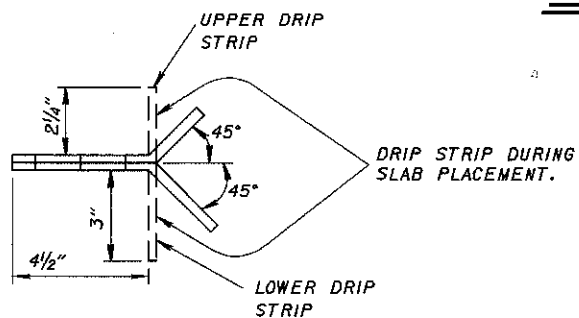
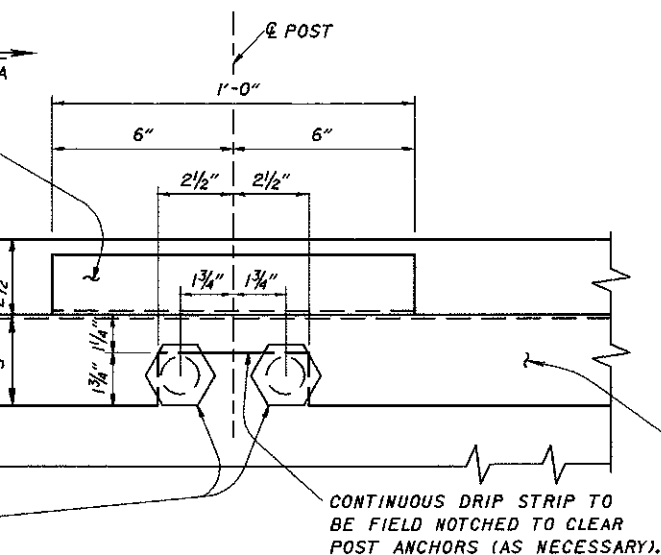
PARTIAL PLAN



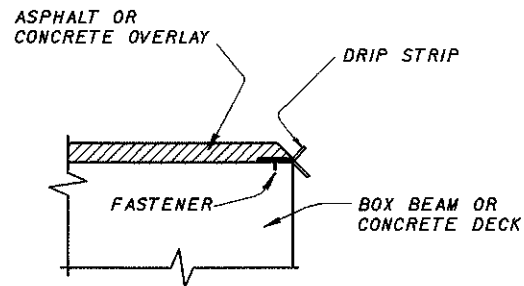
SECTION AT EDGE OF CONCRETE DECK SLAB



SECTION AT EDGE OF COMPOSITE PRESTRESSED BOX BEAM DECK



SECTION A-A



★ SECTION AT EDGE OF ASPHALT OR CONCRETE OVERLAY

DRIP STRIP NOTES:

LOWER STAINLESS STEEL DRIP STRIP, AS DETAILED, SHALL BE INSTALLED ALONG THE FULL LENGTH OF EACH SIDE OF THE BRIDGE. IF SPLICES ARE REQUIRED IN THE LOWER DRIP STRIP, THE INDIVIDUAL PIECES SHALL BE BUTTED TIGHTLY TOGETHER, NOT LAPPED. A 1'-0" LONG UPPER DRIP STRIP SHALL BE INSTALLED AT EACH RAILING POST. STRIPS SHALL BE BENT UP AT 90° AGAINST THE INSIDE FACE OF THE FORMS BEFORE CONCRETE IS PLACED. AFTER THE FORMS ARE REMOVED, THE DRIP STRIPS SHALL BE BENT TO A FINAL POSITION OF 45° AS SHOWN IN SECTION A-A.

STAINLESS STEEL SHALL BE A MINIMUM OF 22 GAUGE ASTM A167, TYPE 304, MILL FINISH.

CARE SHALL BE USED WHEN STRIPPING FORMWORK SO AS NOT TO DAMAGE OR WRINKLE THE STAINLESS STEEL DRIP STRIP. TO FURTHER ENSURE THAT WRINKLING OF THE STRIPS DOES NOT OCCUR, AN ADEQUATE LENGTH BACKUP BAR SHALL BE USED DURING THE BENDING OUT OPERATION.

TOTAL QUANTITY FOR BID ITEM SHALL INCLUDE LINEAR FOOTAGE OF BOTH LOWER AND UPPER DRIP STRIPS.

PAYMENT SHALL BE AT THE CONTRACT PRICE BID FOR ITEM SPECIAL, LIN. FT. STEEL DRIP STRIP AND SHALL INCLUDE ALL MATERIALS, LABOR,