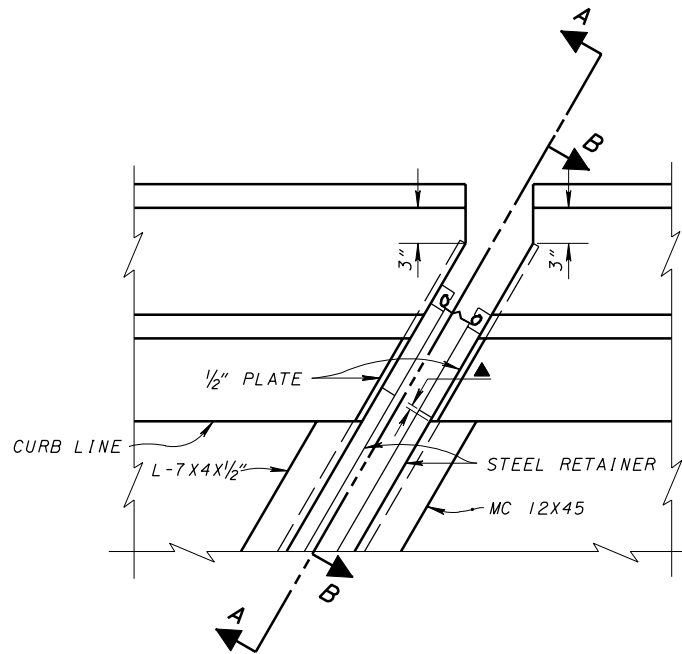


PLAN AT ABUTMENT

**FOR SKEWED BRIDGES (OVER 15°)
WITH DEFLECTOR PARAPET RAILING**

(BR-1 RAILING IS SHOWN, SBR-1-99 SHALL BE SIMILAR)

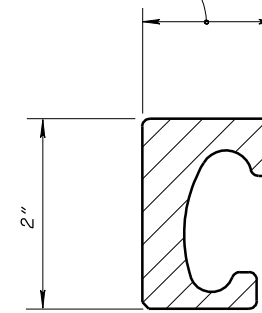
FINISH CONCRETE SURFACE
EITHER FLUSH WITH OR A MAX.
OF 1/4" ABOVE JOINT ARMOR.



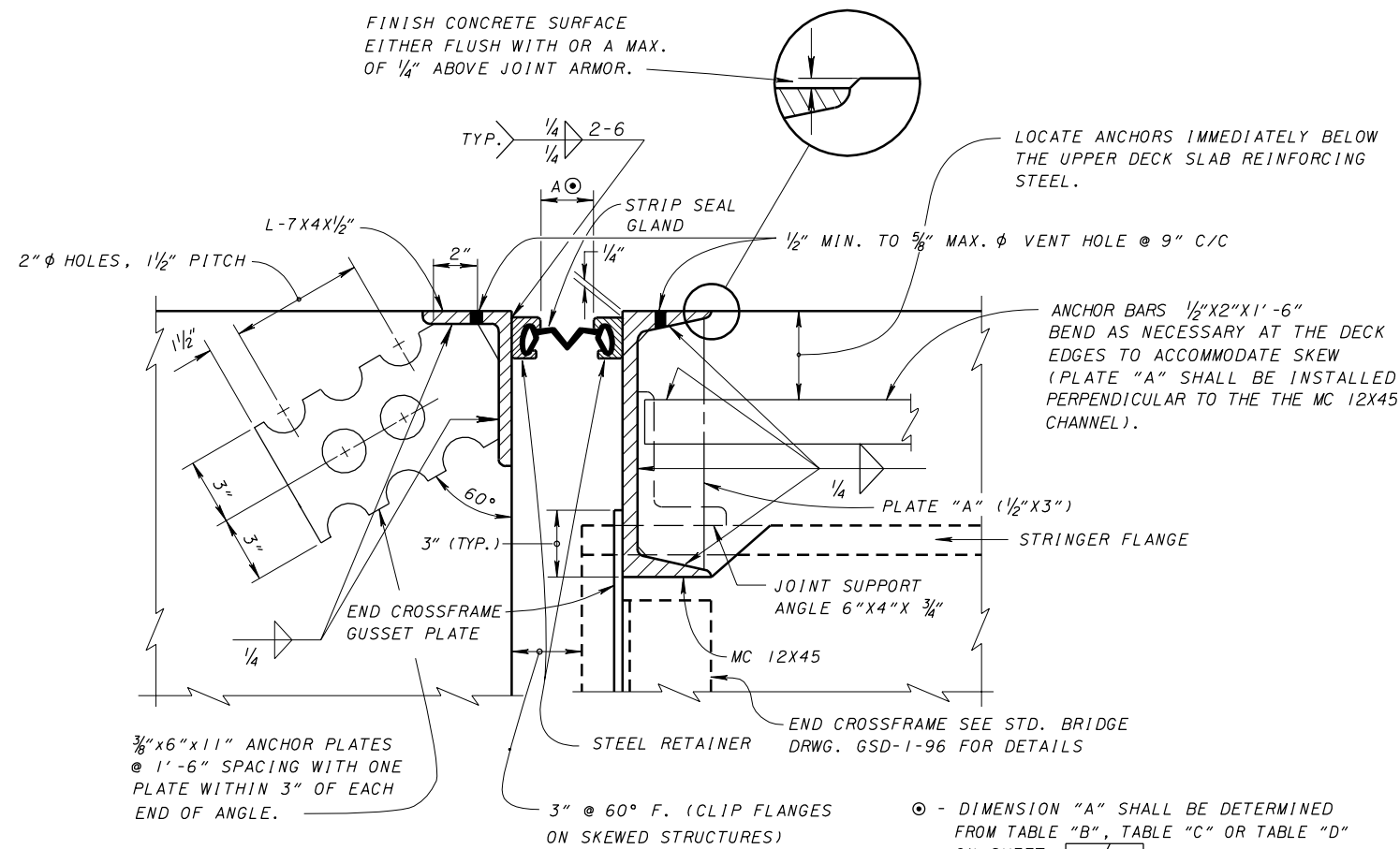
DETAIL B

SEE SHEET **1/5** FOR DEFINITION OF "▲",
SECTION A-A AND SECTION B-B. SECTION A-A
AND SECTION B-B ARE SIMILAR FOR SQUARE AND
SKEWED BRIDGES EXCEPT FOR THE CONCRETE
FORMING AT THE EDGE OF THE PARAPET.

VARIES 1 1/4" TO 1 1/2"
BY MANUFACTURER



RETAINER DETAIL



SECTION X-X

LOCATE ANCHORS IMMEDIATELY BELOW
THE UPPER DECK SLAB REINFORCING
STEEL.

ANCHOR BARS 1/2"x2"x1'-6"
BEND AS NECESSARY AT THE DECK
EDGES TO ACCOMMODATE SKEW
(PLATE "A" SHALL BE INSTALLED
PERPENDICULAR TO THE MC 12X45
CHANNEL).

3/8"x6"x11" ANCHOR PLATES
@ 1'-6" SPACING WITH ONE
PLATE WITHIN 3" OF EACH
END OF ANGLE.

3" @ 60° F. (CLIP FLANGES
ON SKEWED STRUCTURES)

⊙ - DIMENSION "A" SHALL BE DETERMINED
FROM TABLE "B", TABLE "C" OR TABLE "D"
ON SHEET **4/5**.

DESIGN AGENCY OFFICE OF STRUCTURAL ENGINEERING	DATE
	01-20-94
STATE OF OHIO DEPARTMENT OF TRANSPORTATION ENGINEER OF BRIDGES	DATE
	01-20-94
REVIEWED WTL/LMW	EXJ-4-87
CHECKED JS	
DESIGNED AJM	
DRWN GFJ/AJM	
REVISIONS	
11-12-93	
02-14-97	
04-20-01	
07-19-02	
STANDARD STRIP SEAL EXPANSION JOINTS STEEL STRINGER STRUCTURES	
2	5