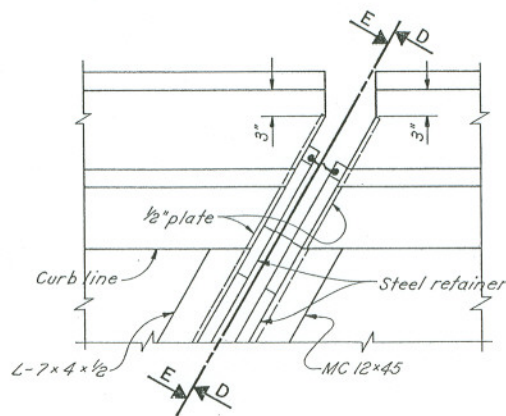


PLAN AT ABUTMENT  
FOR SKEWED (OVER 15°) BRIDGES WITH  
DEFLECTOR PARAPET RAILING



DETAIL B

NOTES:

JOINTS IN END DAM ARMOR: Transverse joints in armor shall have complete penetration buff welds. Welds which will be in contact with steel retainers shall be ground flush.

JOINTS IN RETAINERS shall have watertight, partial penetration buff welds completely around the outer periphery of the abutting surfaces. Welds which will be in contact with the seal gland and/or joint armor shall be ground smooth.

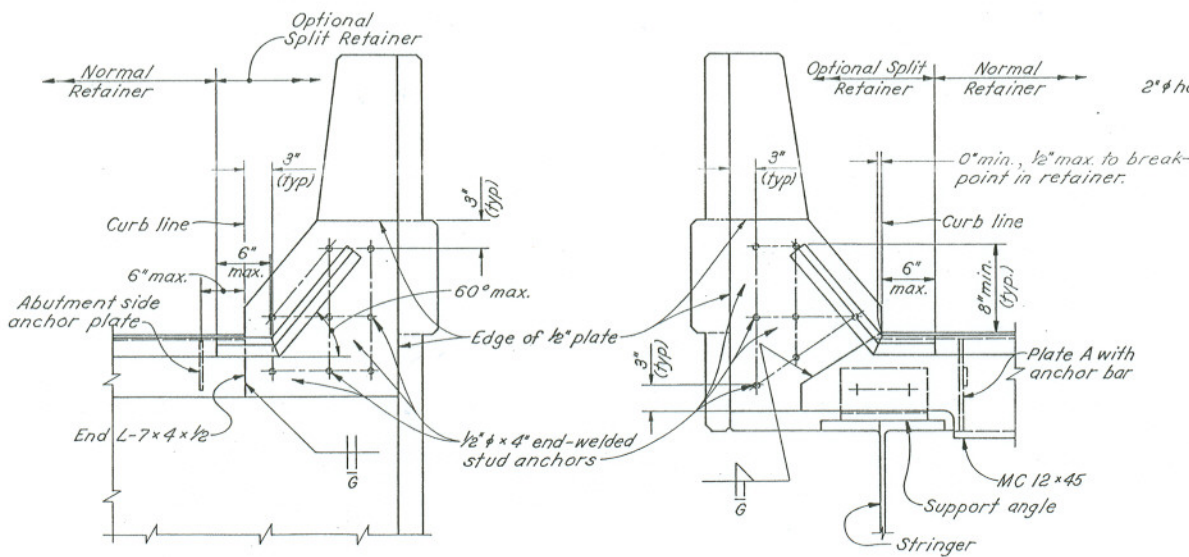
PROJECT PLANS shall list Dimension "A" for temperatures between 30°F and 90°F in 10 degree increments.

JOINT SEAL GLANDS at fixed bearings shall be the same size as at the expansion bearings with a Dimension "A" of 2" at any ambient temperature.

NOTE TO DESIGNER: Generally skew angle φ shall not be greater than 45°

THE MINIMUM LENGTH OF RETAINER shall be 6'-0" between joints unless otherwise shown.

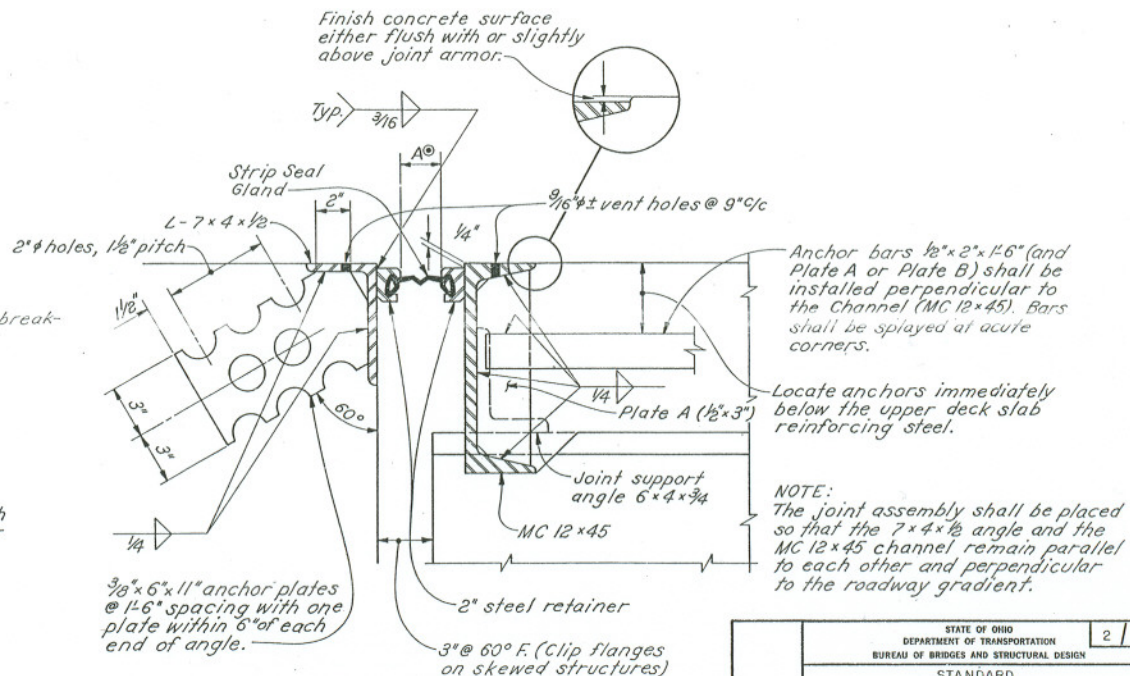
CONCRETE UNDER JOINT ARMOR shall be hand packed, if necessary, to achieve solid filling.



SECTION D-D Δ

SECTION E-E Δ

Δ-See SIDEWALK AND PARAPET JOINT ARMOR ANCHORS note on sheet 3/5.



SECTION X-X

⊙-Dimension "A" shall be determined from TABLE B, TABLE C, or TABLE D on sheet 5/5.

STATE OF OHIO DEPARTMENT OF TRANSPORTATION BUREAU OF BRIDGES AND STRUCTURAL DESIGN					2	5
STANDARD STRIP SEAL EXPANSION JOINTS AT ABUTMENTS FOR STEEL STRINGER STRUCTURES						
APPROVED: <i>R. D. H. [Signature]</i>						
DATE: 1-5-89						
DESIGNED: AJM						
DRAWN: AJM						
TRACED: —						
CHECKED: RLD						
REVIEWED: WTF						
DRAWING NO. EXJ-4-87						