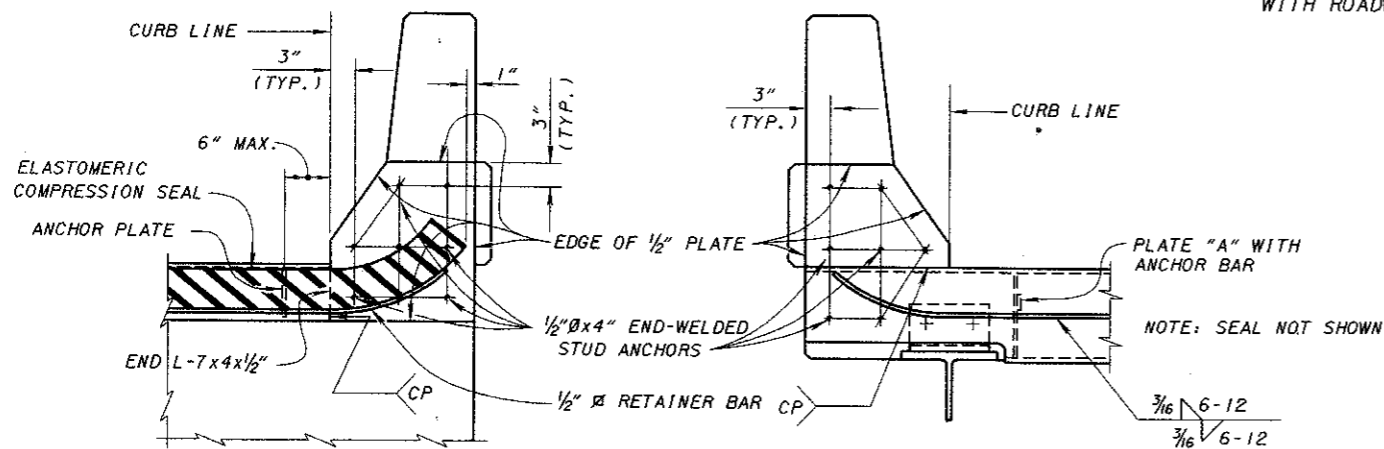


PART PLAN AT ABUTMENT
FOR BRIDGES WITH DEFLECTOR PARAPET RAILING

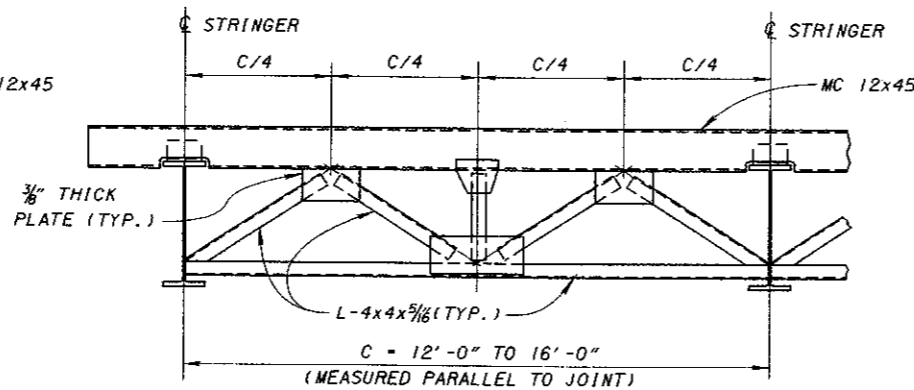
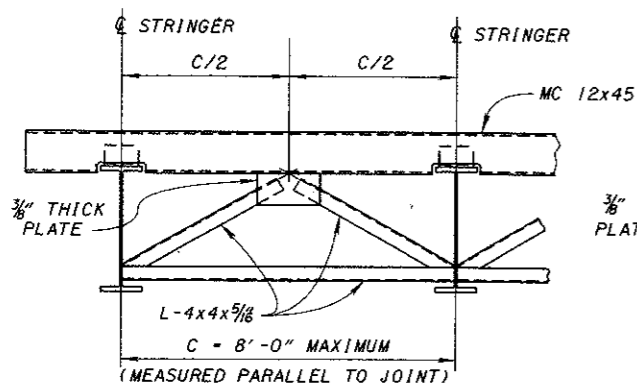
JOINTS IN END DAM ARMOR

TRANSVERSE JOINTS IN SUPERSTRUCTURE ANGLES OR CHANNEL SHALL HAVE COMPLETE PENETRATION BUTT WELDS. TRANSVERSE JOINTS IN ABUTMENT ANGLE SHALL BE CLOSELY BUTTED WITH A MINIMUM OF 6'-0" BETWEEN JOINTS. WELDS IN CONTACT WITH SEAL SHALL BE GROUND FLUSH.

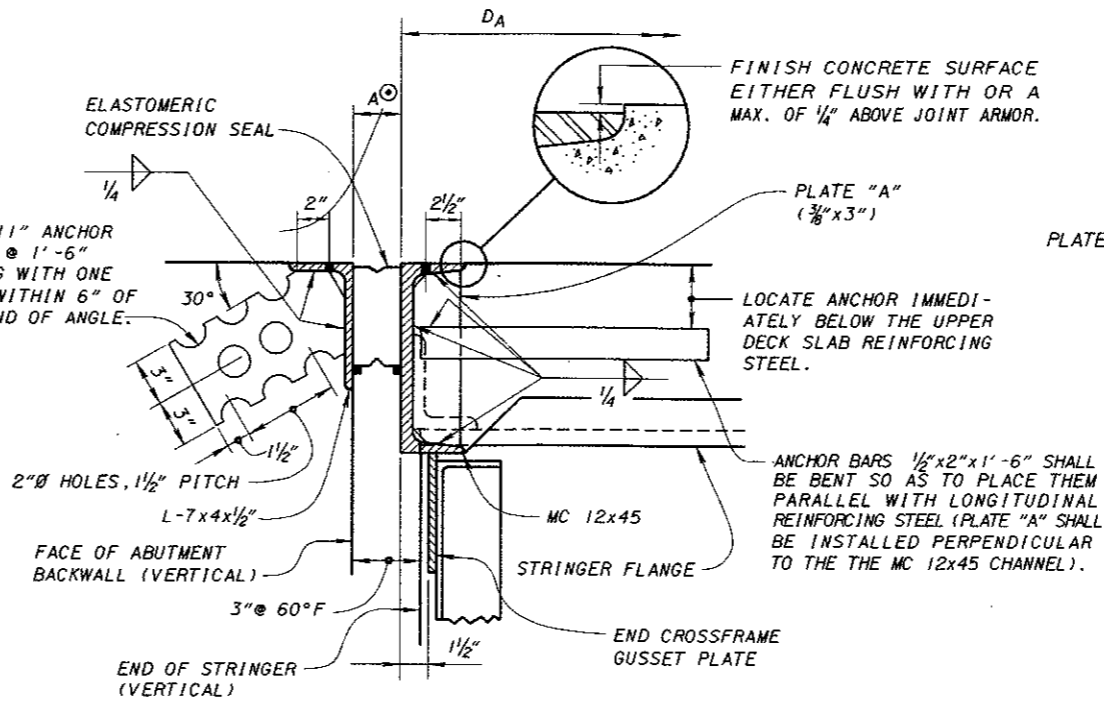


SECTION B-B

SECTION C-C
SEE SECTION B-B FOR ADDITIONAL DETAILS

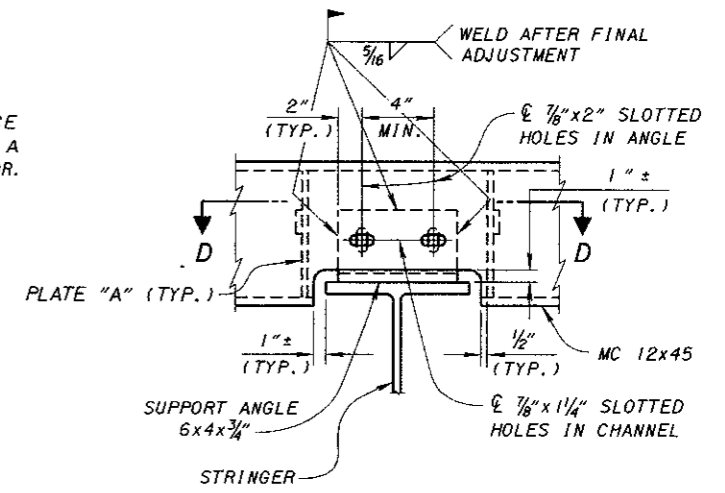


END CROSSFRAME DETAILS
STEEL RETAINERS ARE NOT SHOWN

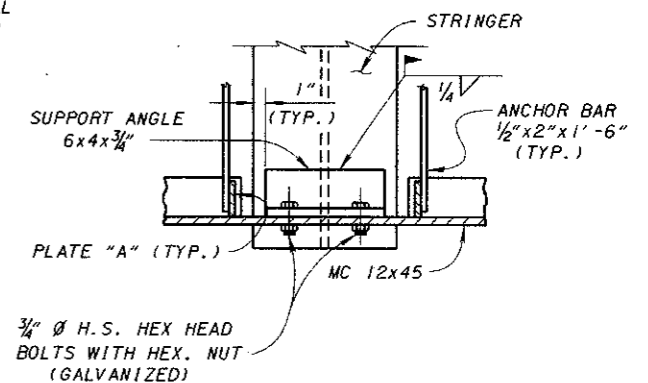


SECTION A-A
WITH ROADWAY GRADIENT OF 2% OR LESS SHOWN

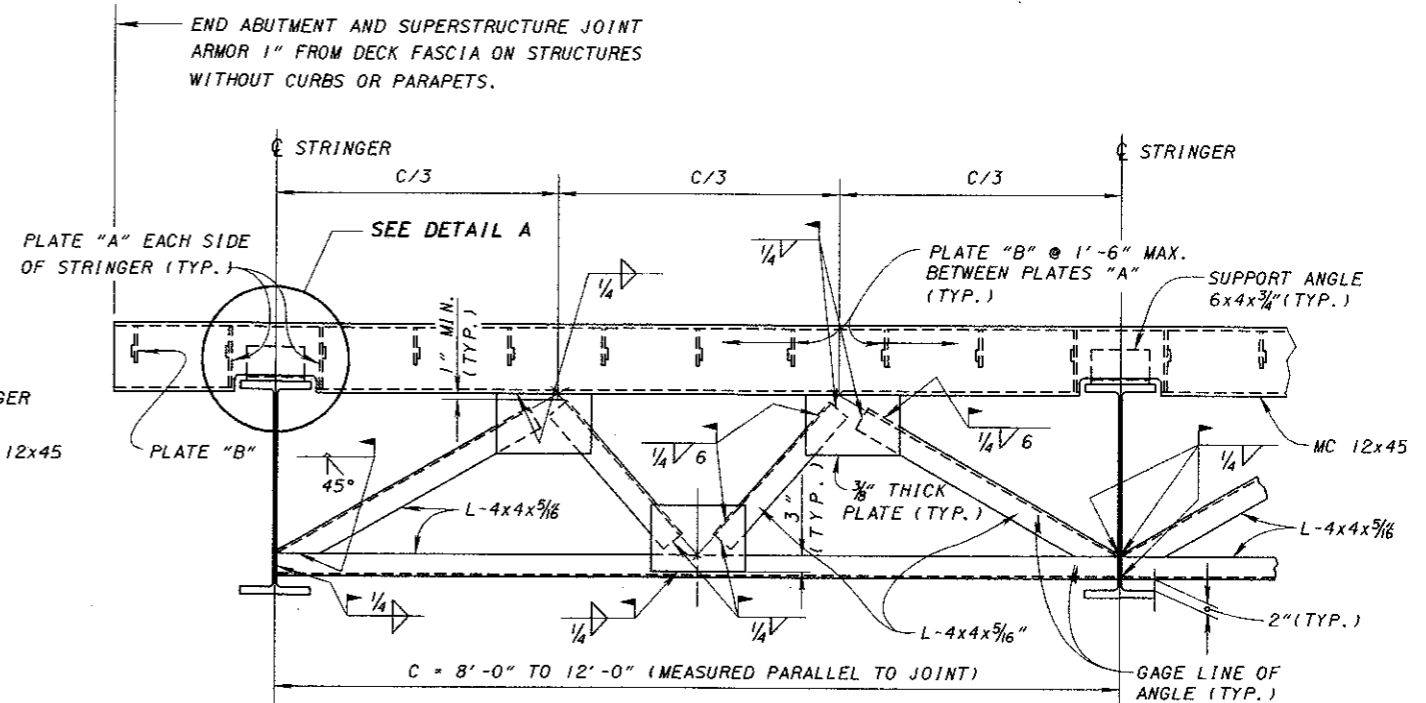
NOTE: FOR DIMENSIONS A[⊙], D_A, ADDITIONAL NOTES AND DETAILS SEE SHEETS 2/3 AND 3/3.



DETAIL A



SECTION D-D



NOTE: THE JOINT ARMOR SHOULD NOT BE PAINTED, EXCEPT FOR THE METALIZED SURFACES DAMAGED DURING CROSSFRAME INSTALLATION. THESE AREAS SHALL BE CLEANED AND PAINTED IN CONFORMANCE WITH THE STRUCTURE'S PAINT SYSTEM REQUIREMENTS. OVERSPRAY FROM PAINTING NEED NOT BE REMOVED. FOR REPAIR OF ALL OTHER METALIZED SURFACES SEE THE JOINT INSTALLATION NOTES ON SHEET 3/3.

NOTE: THE WELDING SYMBOLS SHOWN AT RIGHT ARE TYPICAL FOR ALL SIMILAR LOCATIONS OF THIS END CROSSFRAME. ALSO, THE WELDED ATTACHMENT DETAILS AND TYPICAL DIMENSIONS SHOWN ARE TYPICAL FOR THE CROSSFRAMES DETAILED ABOVE.

DESIGN AGENCY	BUREAU OF BRIDGES	AND STRUCTURAL DESIGN
STATE OF OHIO DEPARTMENT OF TRANSPORTATION	9-1-81	DATE
DESIGNED	MPB/AJM	DRN/AJM
CHECKED	JS/R/L/D	WTL/MPB
REVIEWED		
EXJ-2-81		
REVISIONS	4-2-84	2-14-97
STANDARD	COMPRESSION SEAL EXPANSION JOINTS AT ABUTMENTS FOR STEEL STRINGER STRUCTURES	
1	3	