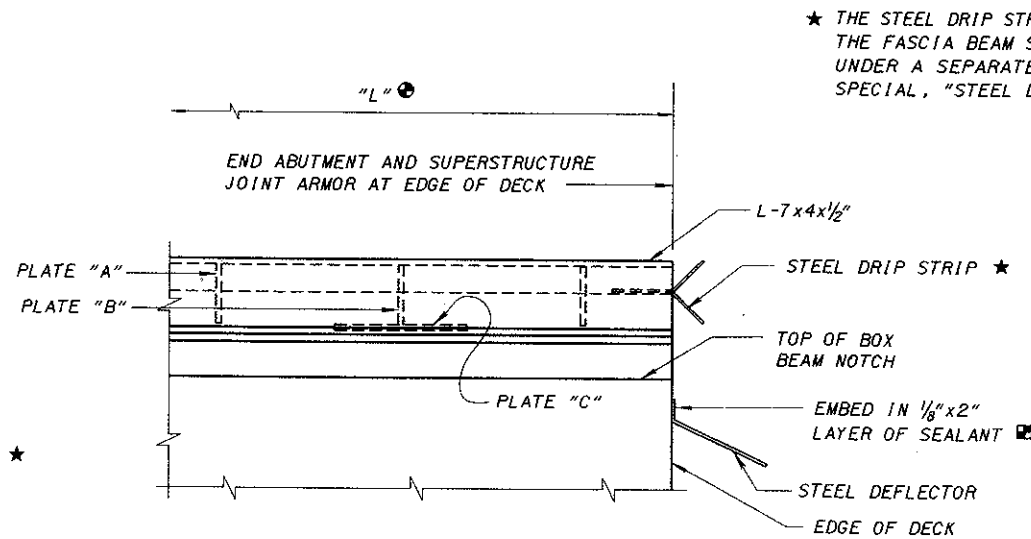


**PART PLAN AT ABUTMENT
FOR FULL WIDTH STRUCTURES**

(SEE SHEET 1 / 4 FOR SECTION A-A)



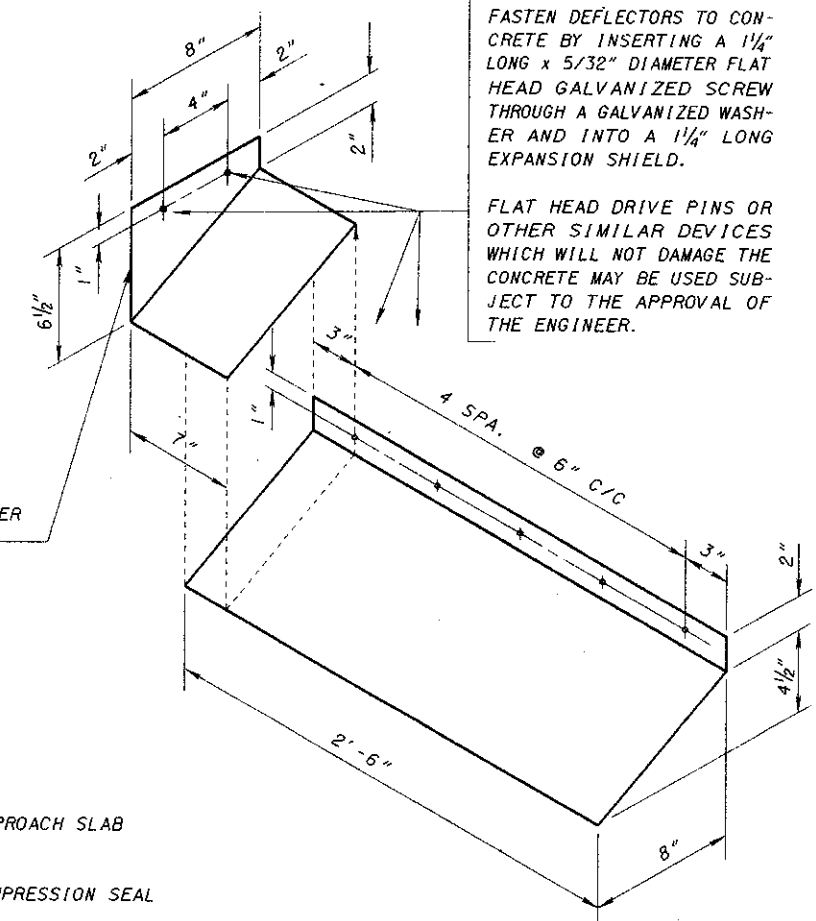
SECTION D-D

NOTES:

- ⊙ JOINT ARMOR SHALL BE OF SUFFICIENT LENGTH TO ALLOW FOR FIT-UP OF BEAMS. SEE FORMULA FOR LENGTH "L".
- ⊠ SEALANT SHALL MEET FEDERAL GOVERNMENT SPECIFICATION TT-S-0027E.

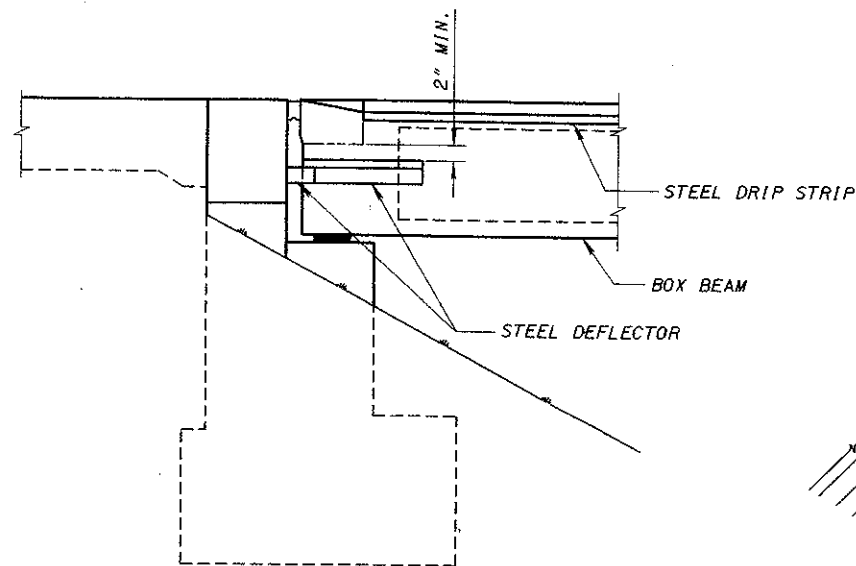
★ THE STEEL DRIP STRIP ON THE EDGE OF THE FASCIA BEAM SHALL BE PAID FOR UNDER A SEPARATE PAY ITEM, ITEM SPECIAL, "STEEL DRIP STRIP".

⊠ EMBED ENTIRE SURFACE OF THIS PLANE IN 1/8" LAYER OF SEALANT.

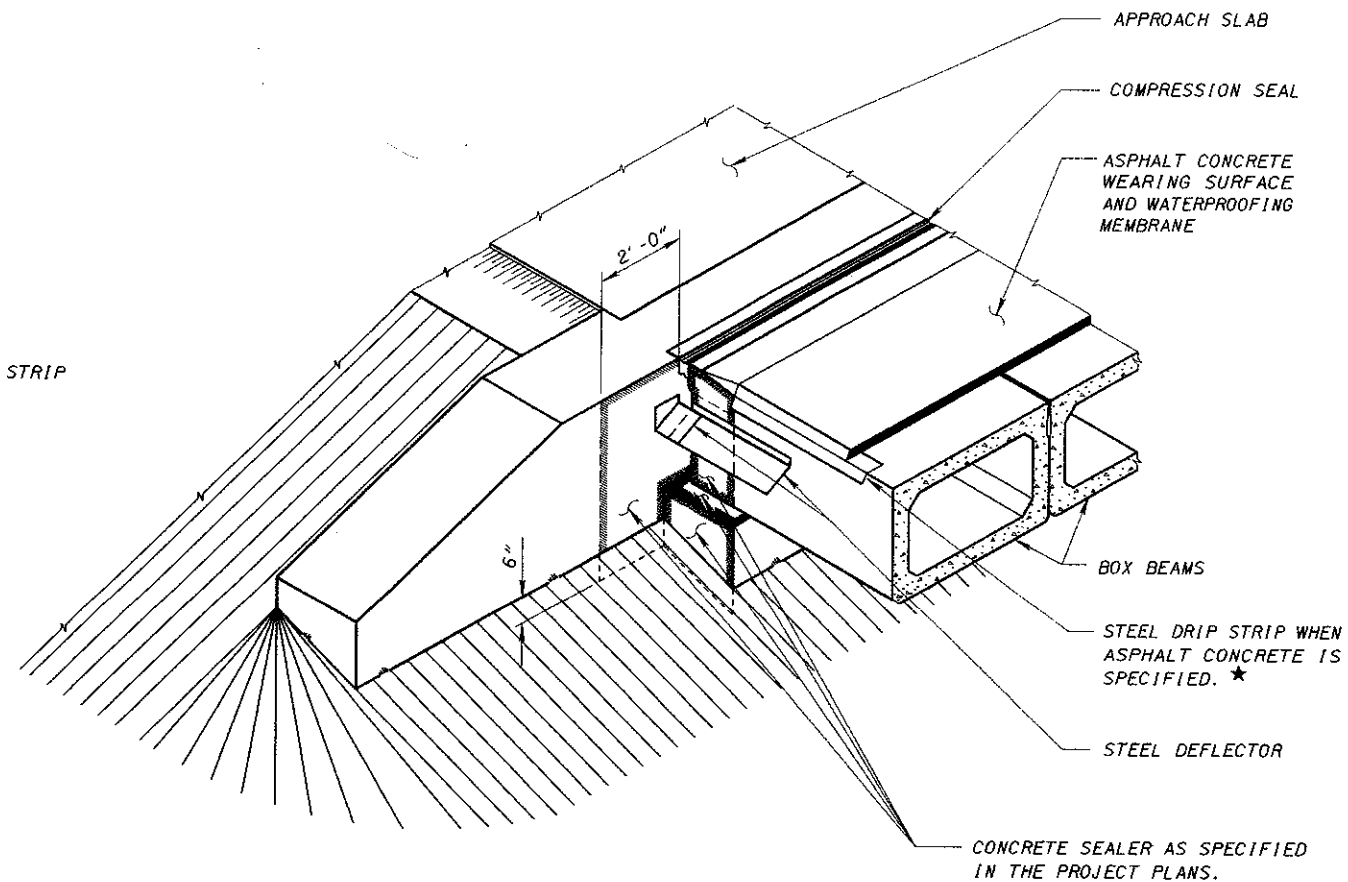


FASTEN DEFLECTORS TO CONCRETE BY INSERTING A 1/4" LONG x 5/32" DIAMETER FLAT HEAD GALVANIZED SCREW THROUGH A GALVANIZED WASHER AND INTO A 1/4" LONG EXPANSION SHIELD.

FLAT HEAD DRIVE PINS OR OTHER SIMILAR DEVICES WHICH WILL NOT DAMAGE THE CONCRETE MAY BE USED SUBJECT TO THE APPROVAL OF THE ENGINEER.



ELEVATION



DEFLECTOR DETAILS

DEFLECTORS SHALL BE MADE FROM MINIMUM 22 GAGE STAINLESS STEEL MEETING THE REQUIREMENTS OF ASTM 167, TYPE 304, WITH A MILL FINISH.

CONCRETE PROTECTION AS DETAILED ON THIS SHEET (STAINLESS STEEL DEFLECTORS AT ABUTMENTS AND CONCRETE SEALER ON DESIGNATED SURFACES) SHALL BE PROVIDED IF CALLED FOR ON THE PROJECT PLANS AND SHALL BE INCLUDED WITH ITEM 516 FOR PAYMENT. IN THIS CASE THE PAY ITEM SHALL BE "STRUCTURAL EXPANSION JOINTS INCLUDING ELASTOMERIC COMPRESSION SEALS AND CONCRETE PROTECTION".

DESIGN AGENCY	BUREAU OF BRIDGES
AND STRUCTURAL DESIGN	
STATE OF OHIO DEPARTMENT OF TRANSPORTATION	DATE
Robert B. Boyer	11-15-82
ENGINEER OF BRIDGES	
REVISIONS	DESIGNED
8-1-84	RLD/AJM
2-14-87	DRAW
	AJM
CHECKED	REVIEWED
JS/MPB	WTL/RLD
EX-1-3-82	
STANDARD	
COMPRESSION SEAL EXPANSION JOINTS AT ABUTMENTS FOR PRESTRESSED BOX BEAM STRUCTURES	
4	4