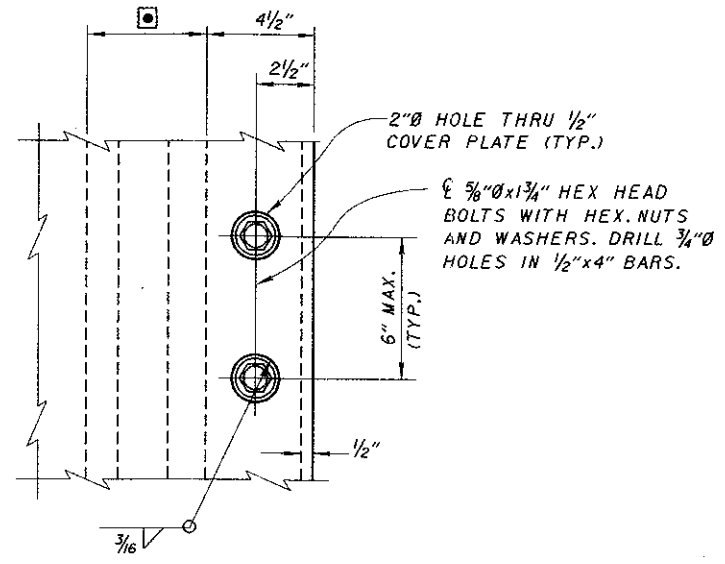
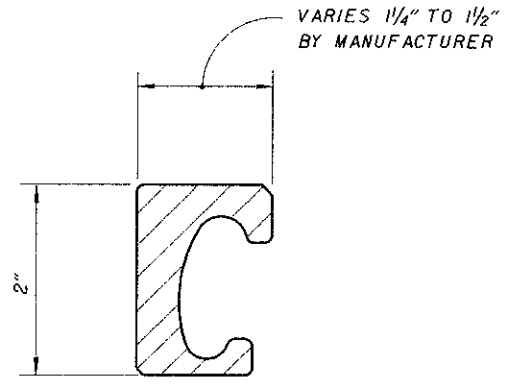


SECTION Y-Y



VIEW E-E



RETAINER DETAIL

**STEEL RETAINER REQUIREMENTS:**

AT JOINT UPTURNS, ESPECIALLY ON SKEWED BRIDGE DECKS, THE USE OF SPLIT RETAINERS MAY BE NECESSARY TO ENSURE GOOD SEAL GLAND INSTALLATION. WHEN THE SPLIT RETAINER IS USED, THE DESIGN SHALL BE SUBMITTED TO THE DIRECTOR FOR APPROVAL.

THE PROPOSED STEEL RETAINER SHALL CONFORM TO THE DIMENSIONS SHOWN ABOVE. THE RETAINERS SHALL BE PRODUCED AS A SOLID SHAPE EXTRUSION, A HOT ROLLED SOLID SHAPE OR SOLID SHAPE MACHINED FROM A SOLID BAR OF STEEL. STEEL RETAINERS MANUFACTURED BY THE BENDING OF A PLATE OR WELDING OF PIECES TOGETHER ARE NOT ACCEPTABLE. THE INTERNAL DIMENSIONS OF THE STEEL RETAINER SHALL MATCH THE MANUFACTURER'S REQUIREMENTS FOR POSITIVE ANCHORAGE FOR THE GLAND.

ANY DEFECTS IN THE STEEL RETAINER OR THE ACTUAL EXPANSION JOINT THAT COULD CAUSE DAMAGE TO THE GLAND SHALL BE CORRECTED BEFORE THE GLAND IS INSTALLED.

**TEMPORARY SUPPORTS**

TEMPORARY SUPPORTS SHALL BE INSTALLED THAT ARE CAPABLE OF SUPPORTING THE WEIGHT OF THE CONCRETE ON FORCES WITHOUT DAMAGE TO THE EXPANSION DEVICE. TEMPORARY SUPPORTS SHALL BE CAPABLE OF SUPPORTING THE EXPANSION DEVICE IN THE FIELD AND SHALL BE INSTALLED IN A FABRICATION SHOP AFTER FABRICATION AND COATING IS COMPLETE.

**CONSTRUCTION PROCEDURE**

1. ABUTMENT BACKWALL CONCRETE SHALL NOT BE PLACED UNTIL AFTER SUPERSTRUCTURE CONCRETE IN THE SPAN ADJACENT TO THE ABUTMENT HAS BEEN PLACED.
2. PLACE BACKWALL CONCRETE DURING STABLE OR RISING AMBIENT TEMPERATURES AND CONCLUDE PLACEMENT AT OR IMMEDIATELY BEFORE THE DAILY PEAK AMBIENT TEMPERATURE.

DESIGN AGENCY BUREAU OF BRIDGES AND STRUCTURAL DESIGN	STATE OF OHIO DEPARTMENT OF TRANSPORTATION <i>B. B. Shambaugh</i> ENGINEER OF BRIDGES	DATE 01-20-94
		EXJ-4-BT
DESIGNED AJM	CHECKED JS	REVIEWED WTL/LMW
REVISIONS 11-12-93 2-14-97	DRAWN GFJ/AJM	
JOINTS RES		