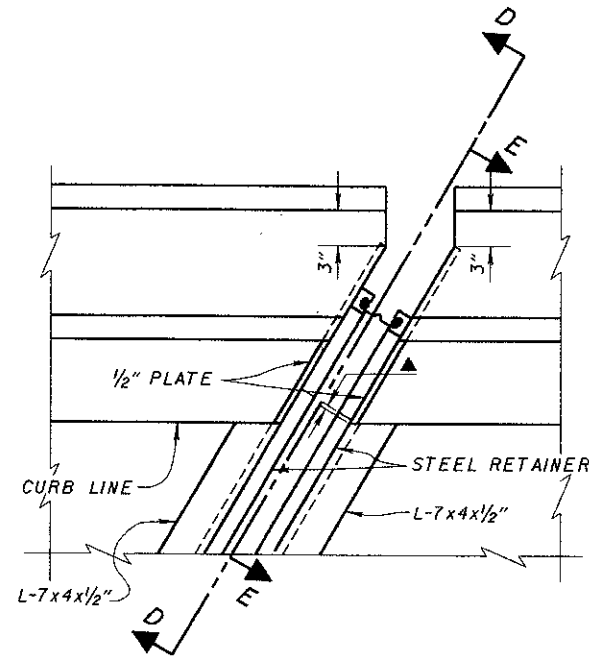


PLAN AT ABUTMENT
FOR SKEWED BRIDGES (OVER 15°)
WITH DEFLECTOR PARAPET RAILING



DETAIL B

JOINTS IN END DAM ARMOR: TRANSVERSE JOINTS IN ARMOR SHALL HAVE COMPLETE PENETRATION BUTT WELDS. BUTT WELDS IN CONTACT WITH THE STEEL RETAINERS SHALL BE GROUND FLUSH.

THE MINIMUM LENGTH OF RETAINER SHALL BE 6'-0" BETWEEN JOINTS UNLESS OTHERWISE SHOWN.

JOINTS IN RETAINERS SHALL HAVE WATERTIGHT, PARTIAL PENETRATION BUTT WELDS COMPLETELY AROUND THE OUTER PERIPHERY OF THE ABUTTING SURFACES. WELDS IN CONTACT WITH THE SEAL GLAND AND/OR JOINT ARMOR SHALL BE GROUND SMOOTH.

PROJECT PLANS SHALL LIST DIMENSION "A" FOR TEMPERATURES BETWEEN 30°F AND 90°F IN 10 DEGREE INCREMENTS.

JOINT SEAL GLANDS AT FIXED BEARINGS SHALL BE THE SAME SIZE AS THE EXPANSION BEARINGS WITH A DIMENSION "A" OF 2" AT ANY AMBIENT TEMPERATURE.

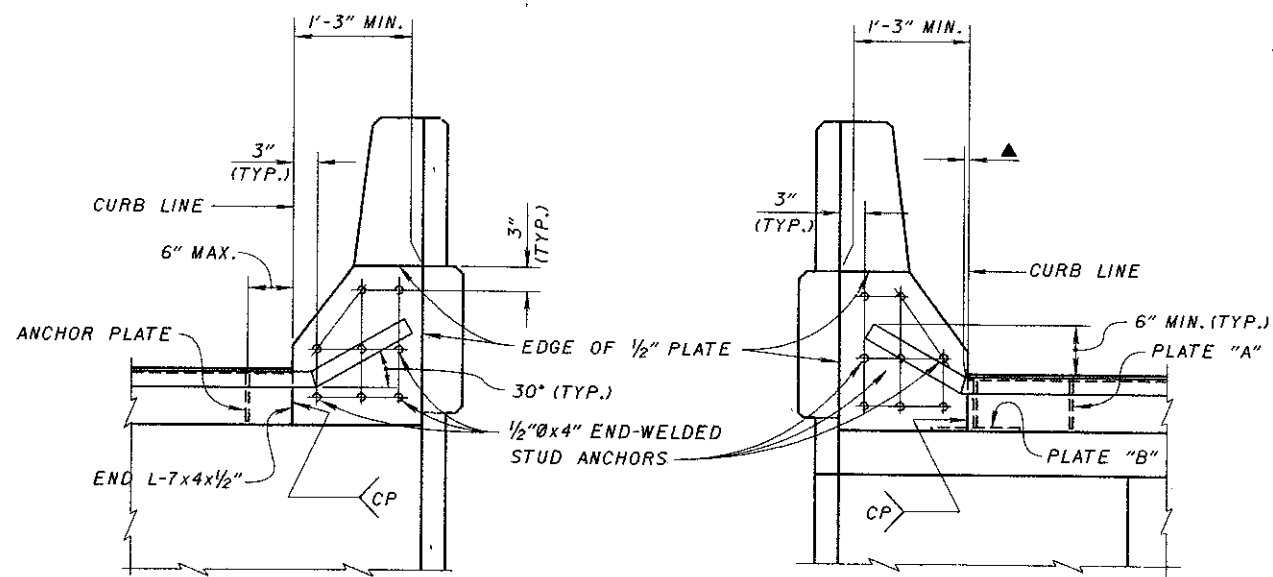
CONCRETE UNDER JOINT ARMOR SHALL BE HAND PLACED AND VIBRATED TO ACHIEVE SOLID FILLING.

PRESTRESSED CONCRETE BOX BEAMS SHALL BE MODIFIED AS FOLLOWS FOR STRIP SEAL INSTALLATION:

1. STIRRUP REINFORCING STEEL IN NOTCHED AREAS AT ENDS OF COMPOSITE BEAMS SHALL NOT PROJECT ABOVE THE TOP OF CONCRETE.
2. ENDS OF FASCIA BEAMS SHALL BE NOTCHED FULL WIDTH OF THE BEAMS.
3. HOLES FOR DOWEL BARS SHALL BE 2 1/2" IN DIAMETER.
4. BEAM ENDS FOR STRUCTURES ON GRADES OVER 2% SHALL BE MADE VERTICAL.

ABUTMENT DETAILS: THIS DESIGN IS INTENDED FOR STRUCTURES WITH A FREE STANDING ABUTMENT SIMILAR TO THE ABUTMENT DETAIL SHOWN ON SHEET 4/5.

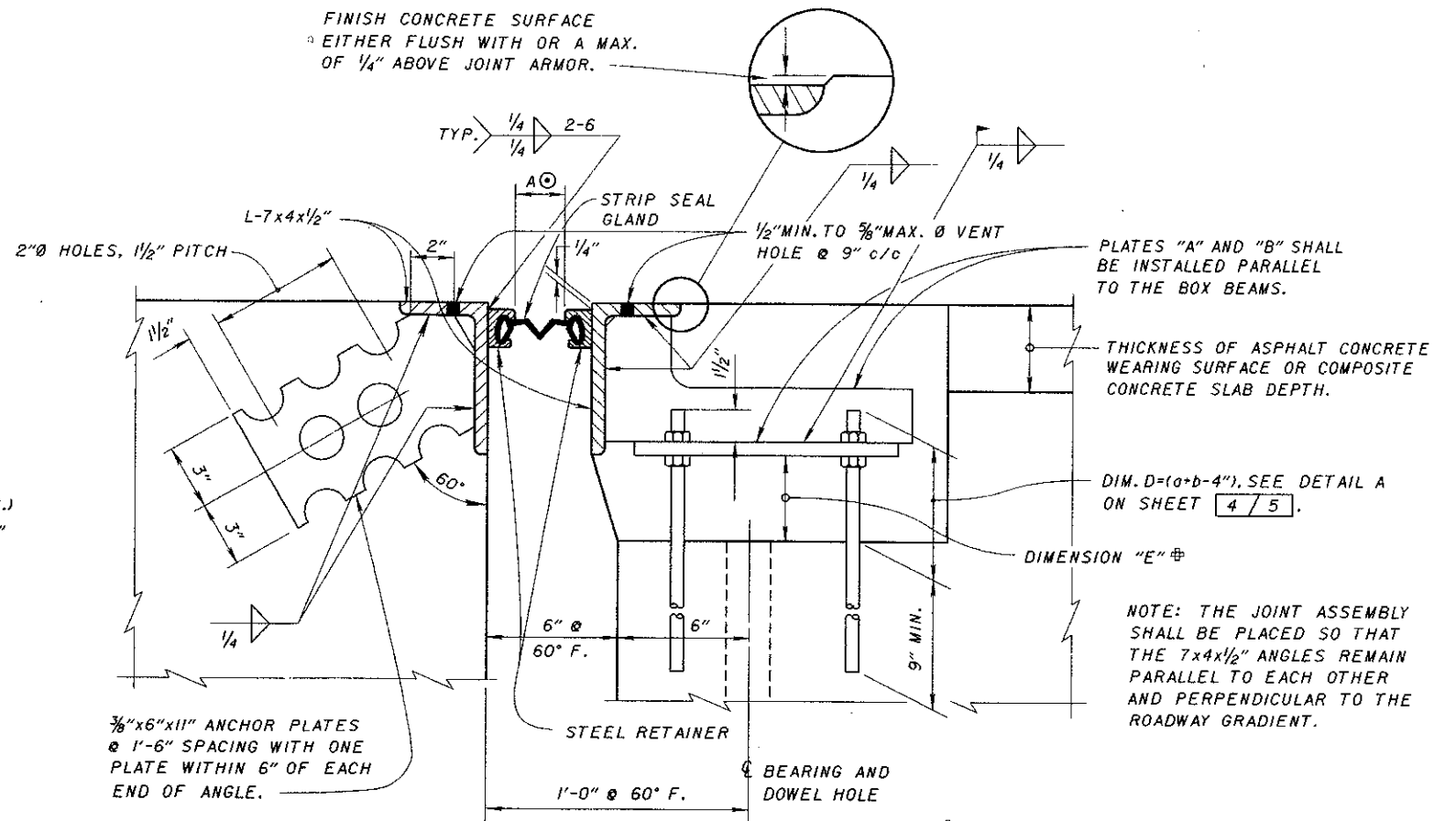
DOWEL BAR HOLES IN THE ABUTMENT SEATS SHALL BE 1/4" IN DIAMETER.



SECTION D-D

SECTION E-E

▲ - 0" MIN. TO 1/2" MAX. AT BREAKPOINT IN RETAINER FOR SQUARE BRIDGES. ON SKEWED BRIDGES THIS DIMENSION WILL ONLY APPLY TO THE SIDE OF JOINT ASSEMBLY WHICH IS NEAREST TO THE CURB LINE (SEE DETAIL "B" ABOVE).



SECTION X-X

⊙ - DIMENSION "A" SHALL BE DETERMINED FROM TABLE "B", TABLE "C" OR TABLE "D" ON SHEET 5/5.

⊕ - IF DIMENSION "E" IS LESS THAN 3" A BED OF NON-SHRINKING GROUT SHALL BE PLACED AND COMPACTED UNDER EACH PLATE B AFTER FINAL VERTICAL ADJUSTMENT.

DESIGN AGENCY	BUREAU OF BRIDGES AND STRUCTURAL DESIGN
STATE OF OHIO DEPARTMENT OF TRANSPORTATION	DATE 01-20-94
DESIGNED BY	ENGINEER OF BRIDGES
CHECKED BY	
DESIGNED BY	
REVISIONS	
2-14-97	
STANDARD	STRIP SEAL EXPANSION JOINTS CONCRETE BOX BEAM STRUCTURES
2	5