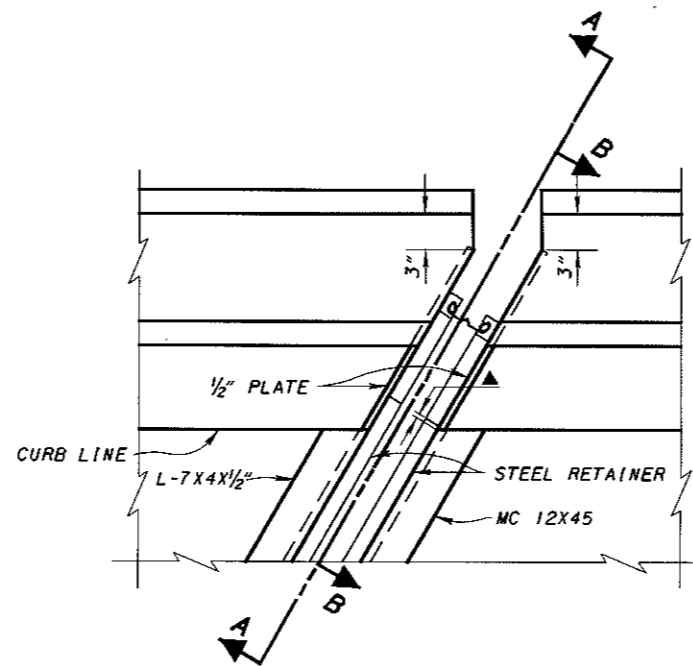


**PLAN AT ABUTMENT**

**FOR SKEWED BRIDGES (OVER 15°)  
WITH DEFLECTOR PARAPET RAILING**

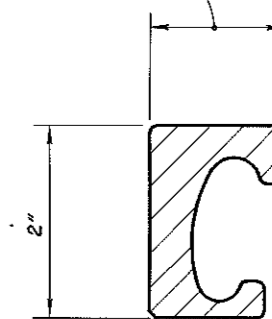
(BR-1 RAILING IS SHOWN, SBR-1-99 SHALL BE SIMILAR)



**DETAIL B**

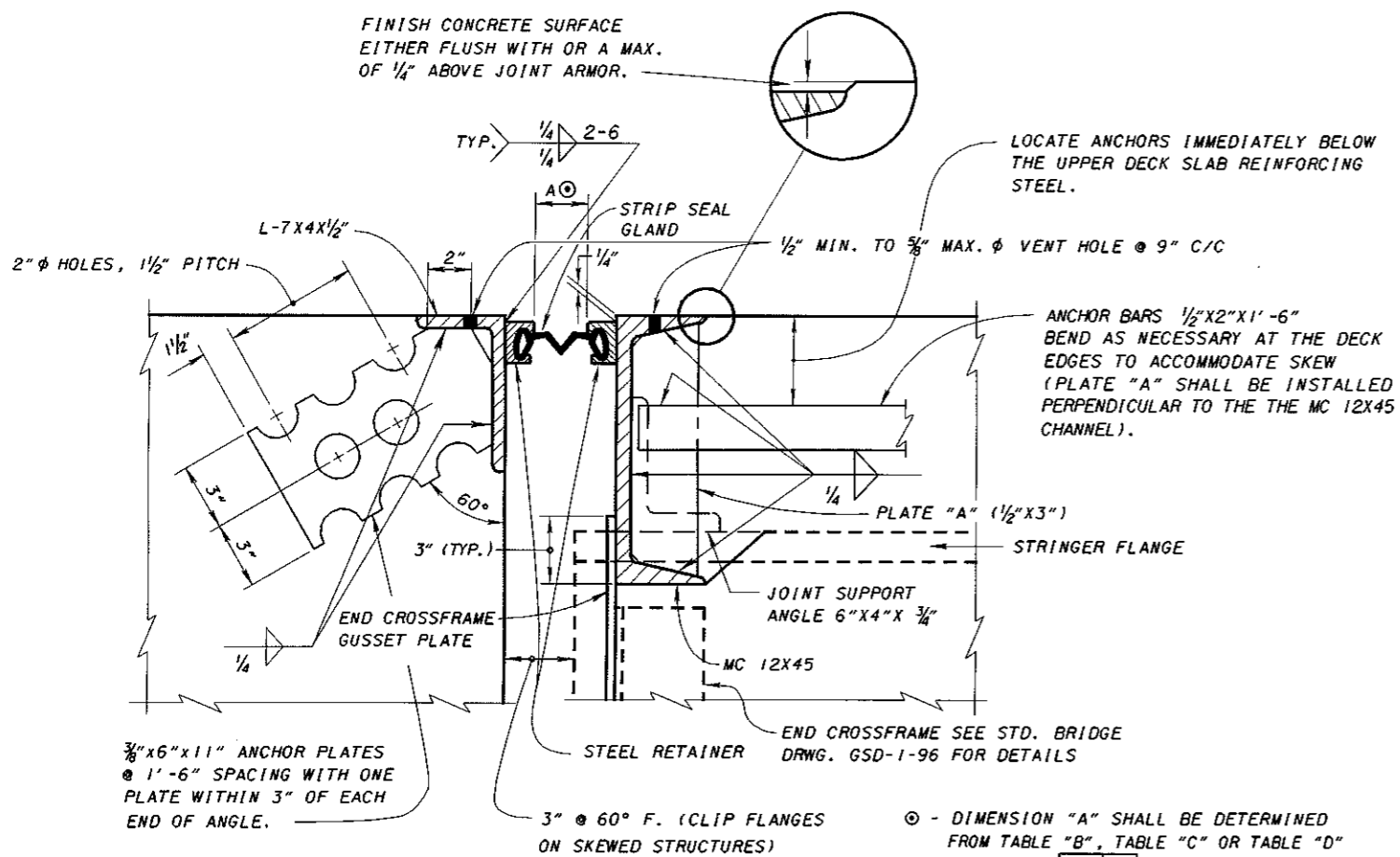
SEE SHEET **1/5** FOR DEFINITION OF "▲", SECTION A-A AND SECTION B-B. SECTION A-A AND SECTION B-B ARE SIMILAR FOR SQUARE AND SKEWED BRIDGES EXCEPT FOR THE CONCRETE FORMING AT THE EDGE OF THE PARAPET.

VARIES 1/4" TO 1 1/2"  
BY MANUFACTURER



**RETAINER DETAIL**

FINISH CONCRETE SURFACE  
EITHER FLUSH WITH OR A MAX.  
OF 1/4" ABOVE JOINT ARMOR.



LOCATE ANCHORS IMMEDIATELY BELOW  
THE UPPER DECK SLAB REINFORCING  
STEEL.

ANCHOR BARS 1/2"x2"x1'-6"  
BEND AS NECESSARY AT THE DECK  
EDGES TO ACCOMMODATE SKEW  
(PLATE "A" SHALL BE INSTALLED  
PERPENDICULAR TO THE MC 12X45  
CHANNEL).

⊙ - DIMENSION "A" SHALL BE DETERMINED  
FROM TABLE "B", TABLE "C" OR TABLE "D"  
ON SHEET **4/5**.

**SECTION X-X**

DESIGN AGENCY OFFICE OF STRUCTURAL ENGINEERING	STATE OF OHIO DEPARTMENT OF TRANSPORTATION DATE 01-20-94 ENGINEER OF BRIDGES DATE	REVISIONS 11-12-93 2-14-97 04-20-01	DESIGNED AJM DRAWN GFJ/AJM	CHECKED JS EXJ-4-87	REVISED WTL/LMW
<b>STRIP SEAL EXPANSION JOINTS STEEL STRINGER STRUCTURES</b>					
STANDARD					
2 / 5					