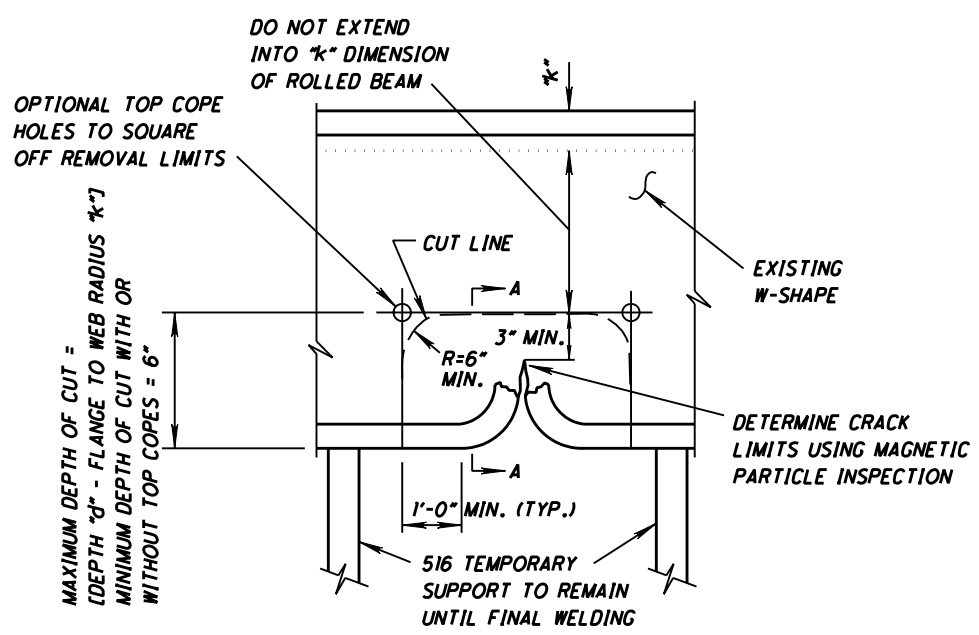
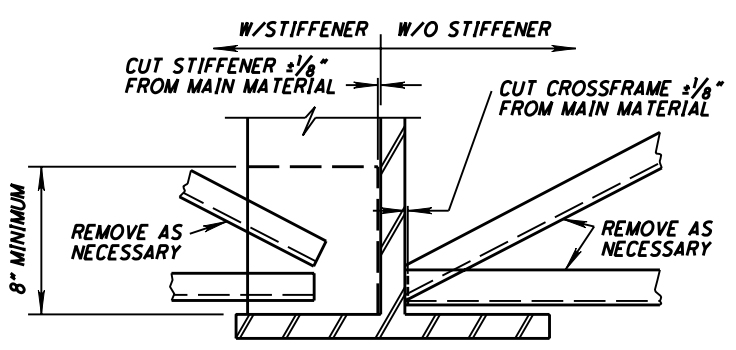


1. INSTALL TEMPORARY SUPPORT
2. REMOVE SECONDARY MEMBERS AS NECESSARY IF APPLICABLE
3. SAW OR FLAME CUT TO REMOVE DAMAGED BEAM USING A MECHANICAL GUIDE
4. PREPARE EXISTING BEAM FOR COMPLETE PENETRATION WELD BY EDGE BEVELING AND CREATING UNDERSIZED WEB COPE.
5. PREPARE NEW BEAM FOR COMPLETE PENETRATION WELD BY EDGE BEVELING AND CREATING UNDERSIZED WEB COPE.
6. ERECT NEW BEAM AND CHECK FIT UP, NO GAP EXCEEDING 1/16", TACK WELD BEAM INTO PLACE
7. PERFORM THE COMPLETE PENETRATION FLANGE WELDING ACCORDING TO CMS 513.21 BY ATTACHING RUN OFF TABS, PERFORM WELDS, REMOVING TABS AND GRINDING ALL WELD SURFACES SMOOTH ACCORDING TO ANSI B46.1 OF 250 MIL. COMPLETE NDT TESTING ACCORDING TO C&MS 513.25A
8. PERFORM COMPLETE PENETRATION WEB WELDS ACCORDING TO 513.21 BY PERFORMING WELDS, GRINDING COPE AND ALL WELDS SMOOTH ACCORDING TO ANSI B46.1 OF 250 mil. COMPLETE NDT TESTING ACCORDING TO C&MS 513.25A.
9. REPAIR SECONDARY MEMBERS IF APPLICABLE



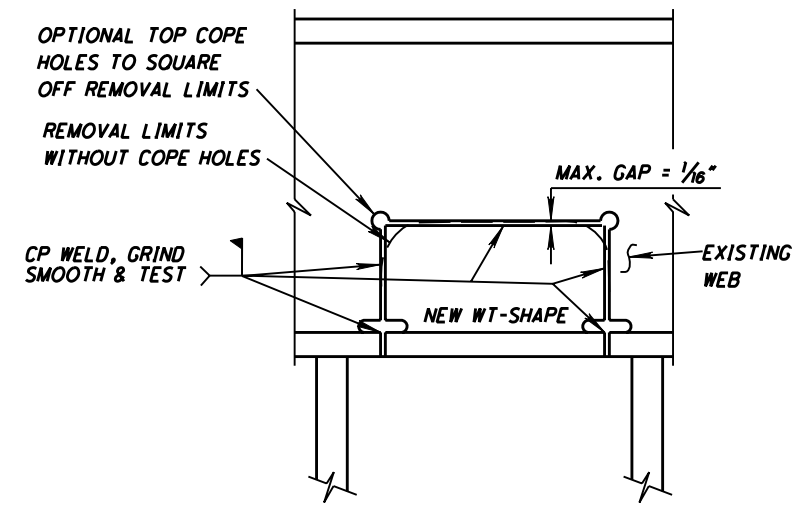
**PARTIAL BEAM REPLACEMENT BCI-1**  
SEE NOTE 1 THROUGH 3



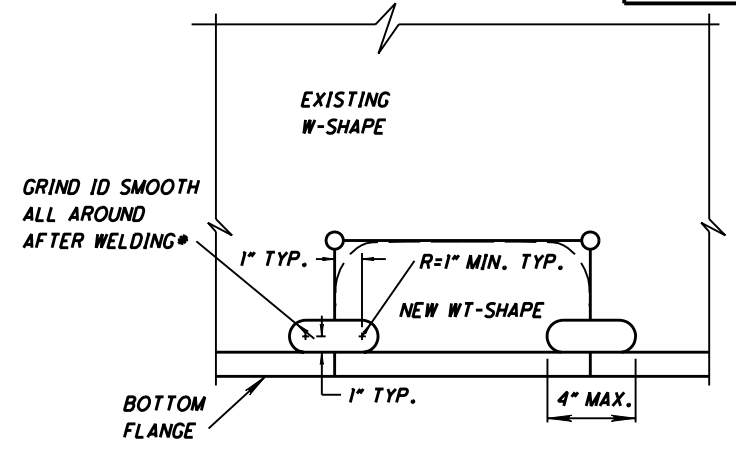
**SECTION A-A**  
SEE NOTE 2

TABLE #3 513 REPAIRS									
DAMAGED AREA No.	MEMBER LINE No. A	PIER OR ABUTMENT	DIM. C	REPAIR DETAIL TYPE	DRILLING HOLES (EACH)	COPE HOLES (EACH)	STEEL MEMBER LEVEL UP (POUNDS)	CP WELD (FEET)	FILLET WELD (FEET)
				BC1					

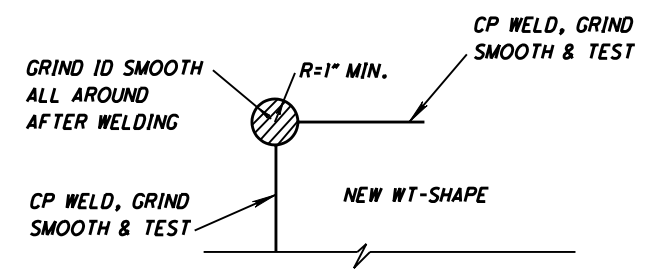
SEE PARTIAL FRAMING PLAN FOR DIMENSION C



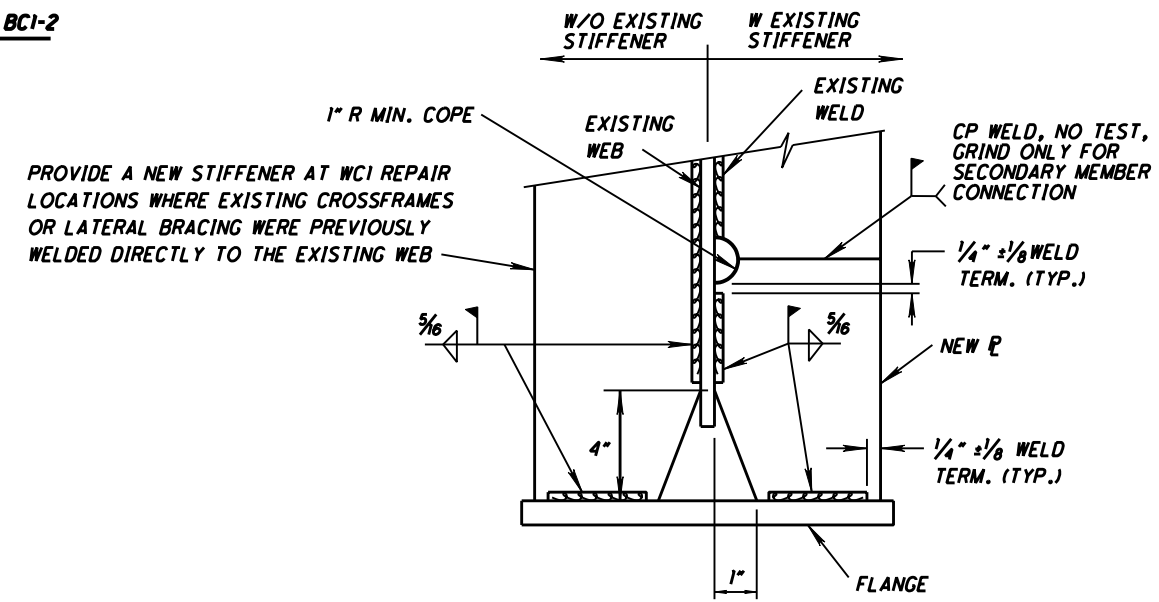
**PARTIAL BEAM REPLACEMENT BCI-2**  
SEE NOTE 3 THROUGH 8



**FIELD REPAIR BOTTOM COPE BCI-3**  
SEE NOTE 8



**FIELD REPAIR TOP COPE BCI-4**  
SEE NOTE 8



**FIELD REPAIR STIFFENER BCI-5**  
SEE NOTE 8 & 9