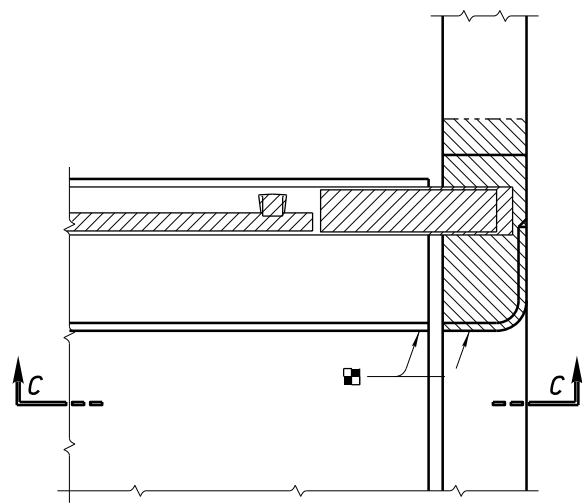


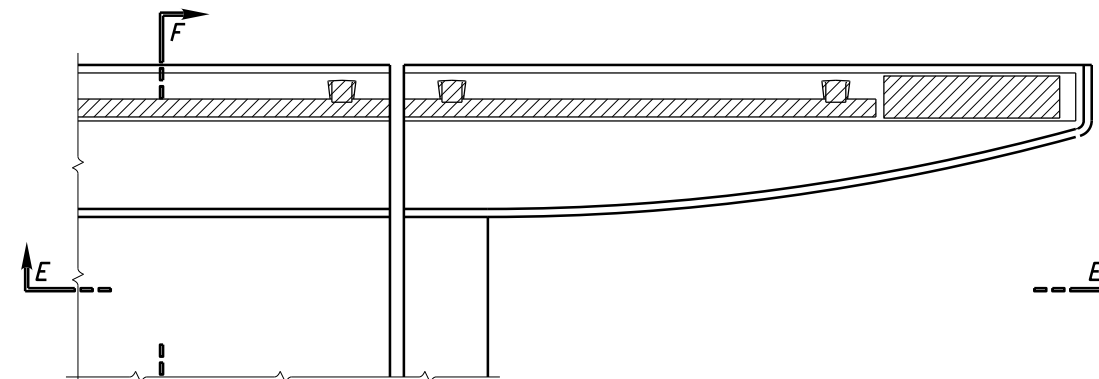
PART PLAN

(AR-1-57 RAILING ON ABUTMENT WITH STRAIGHT WINGWALLS)



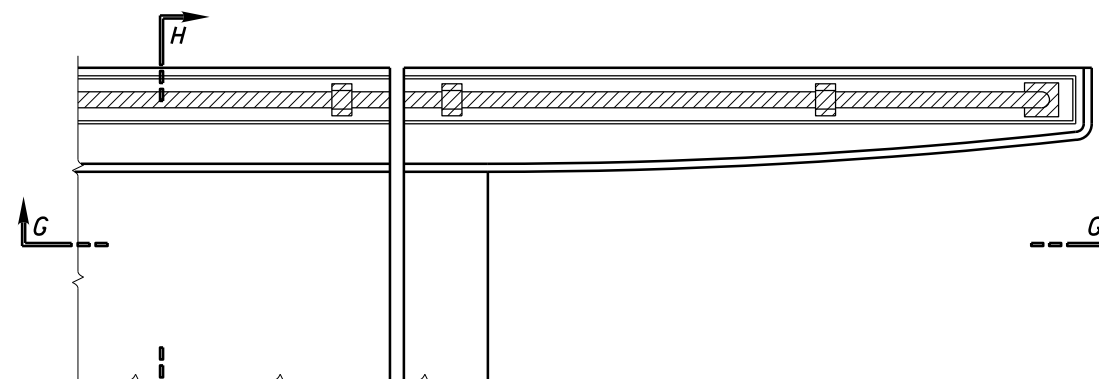
PART PLAN

(BR-1-65 RAILING ON ABUTMENT WITH STRAIGHT WINGWALLS)



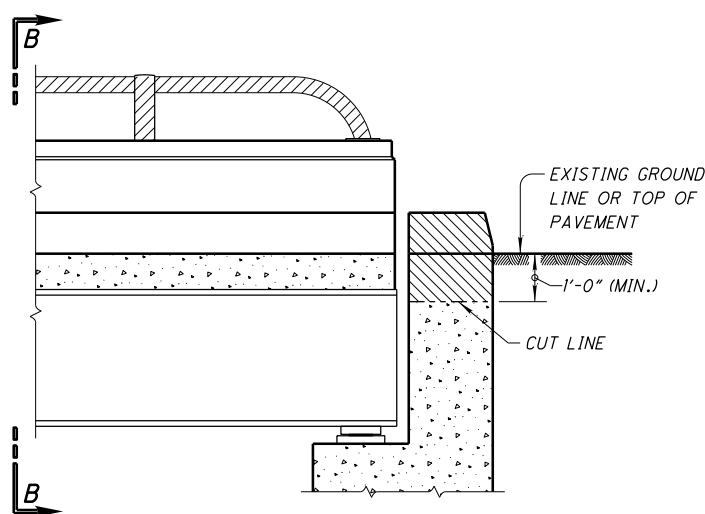
PART PLAN

(BR-1-65 RAILING ON ABUTMENT WITH TURNBACK WINGWALLS)

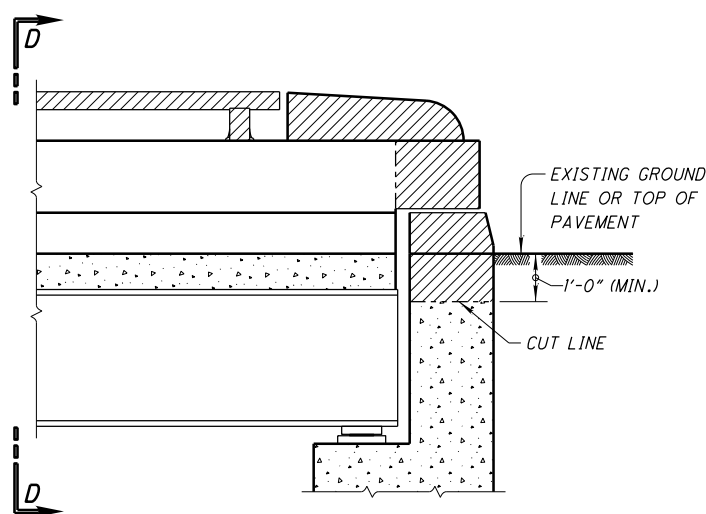


PART PLAN

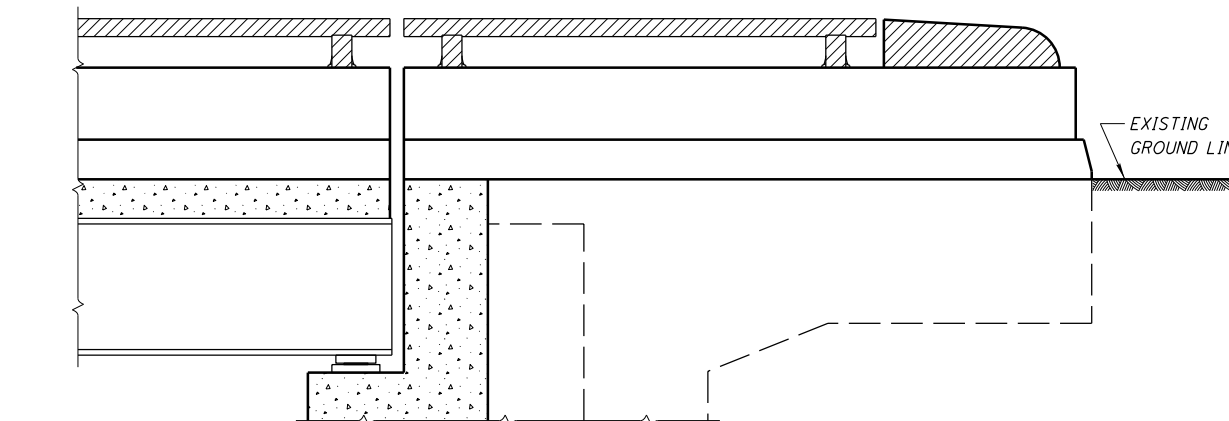
(AR-1-57 RAILING ON ABUTMENT WITH TURNBACK WINGWALLS)



SECTION A-A

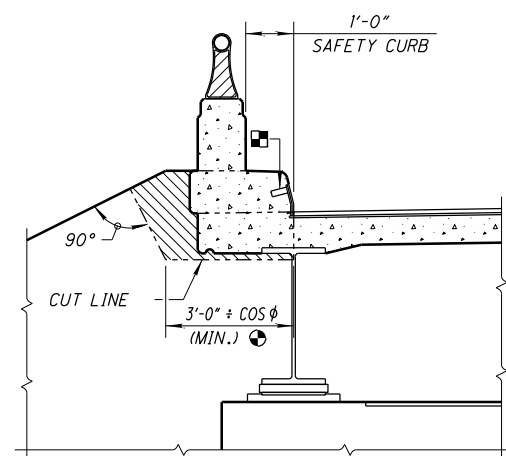


SECTION C-C



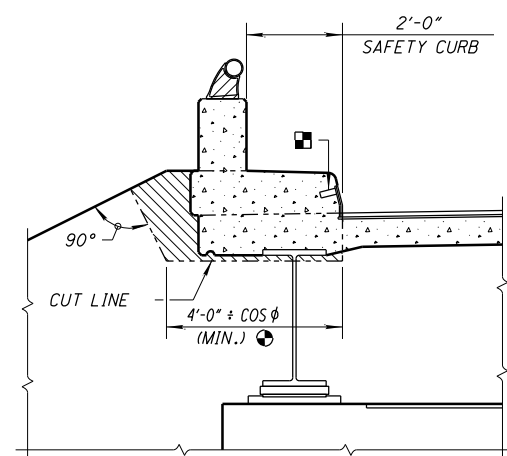
SECTION E-E

(SECTION G-G IS SIMILAR)



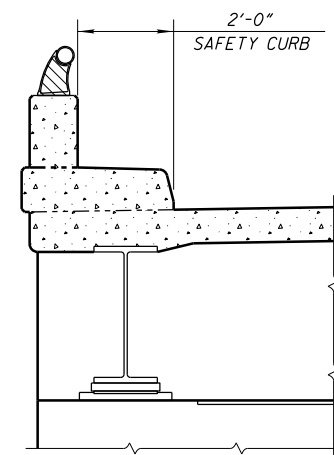
SECTION B-B

(2'-0" SAFETY CURB SIMILAR)



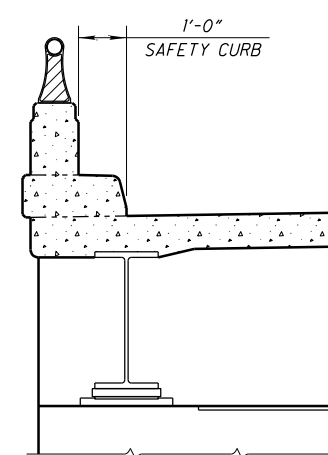
SECTION D-D

(1'-0" SAFETY CURB SIMILAR)



SECTION F-F

(1'-0" SAFETY CURB SIMILAR)



SECTION H-H

(2'-0" SAFETY CURB SIMILAR)

NOTE: HATCHED AREAS INDICATE REMOVALS IN ACCORDANCE WITH ITEM 202 - PORTIONS OF STRUCTURE REMOVED.

⊙ - MEASURED ALONG THE ABUTMENT

φ - SKEW ANGLE

■ - EXISTING EXPANSION JOINT ARMOR TO REMAIN. (SEE GENERAL NOTES SHEET 3 OF 3)