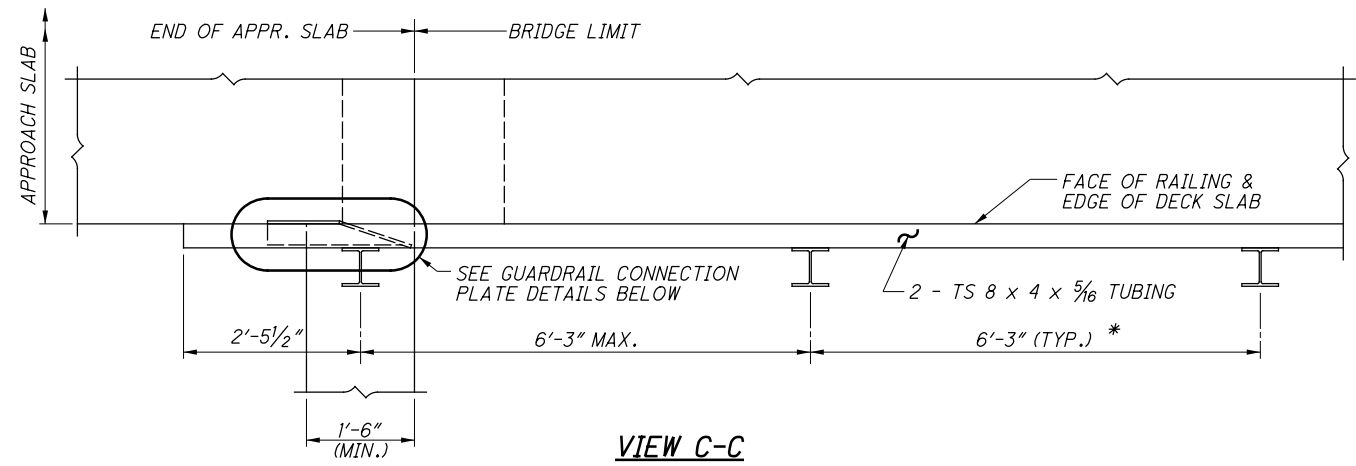
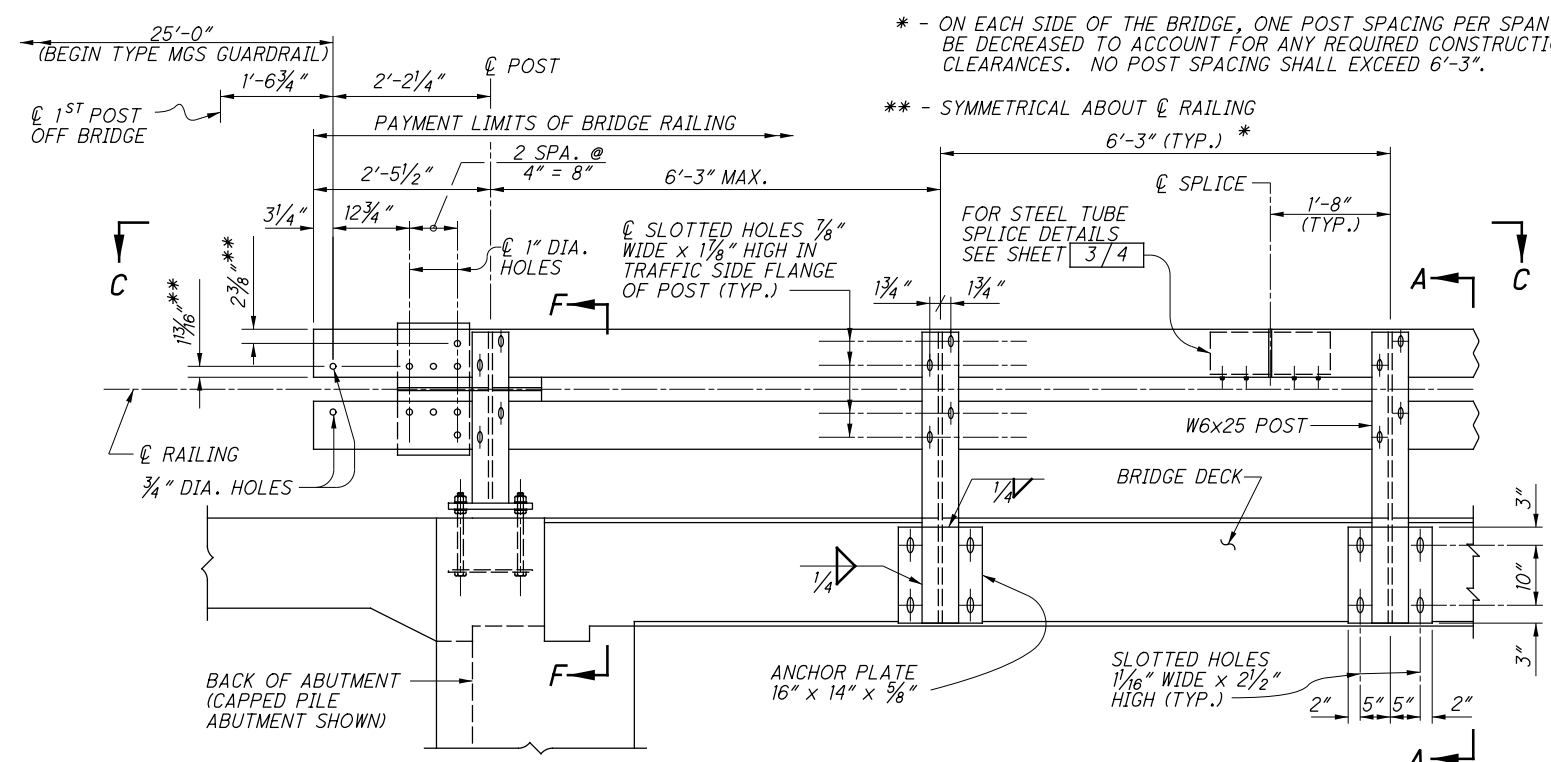


I:\br\bridstds\english\revisions\07-20-18\Final Drawings\TST-1-99\st199_07-20-18.dgn 6/21/2018 7:05:14 AM smeddies



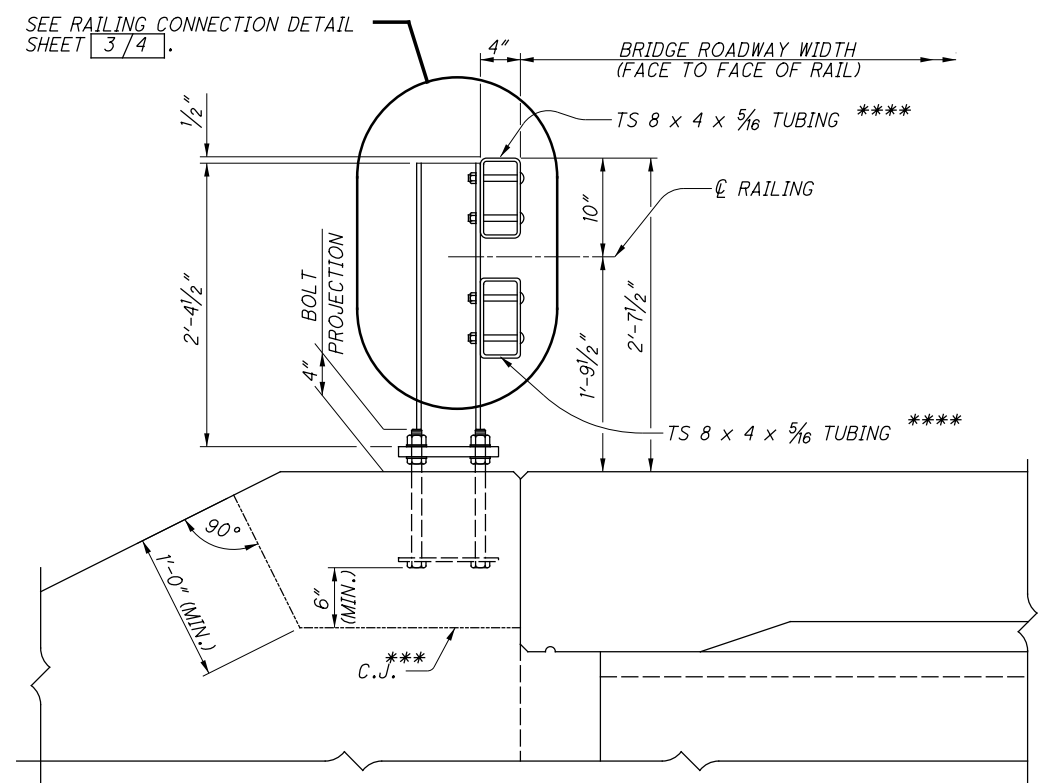
VIEW C-C



RAILING ELEVATION ON CONCRETE SLAB

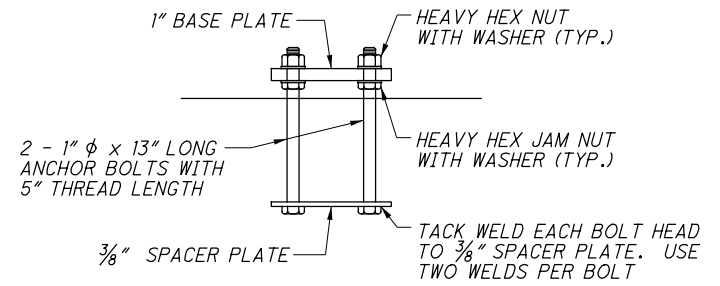
BRIDGE TERMINAL ASSEMBLY NOT SHOWN. REFER TO STANDARD CONSTRUCTION DRAWING MGS-3.1 FOR DETAILS.

FOR SECTION A-A SEE SHEET 2/4.



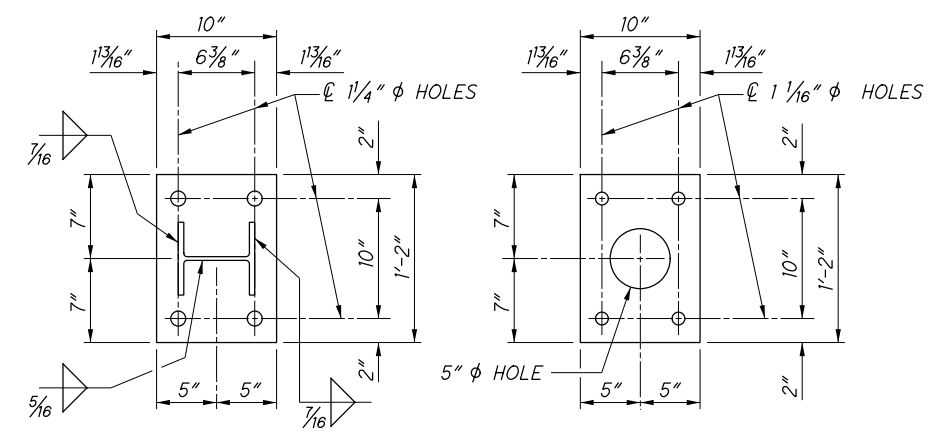
SECTION F-F

*** - PLACE THE CONCRETE ABOVE THE CONSTRUCTION JOINT AFTER INSTALLATION OF THE RAILING IS COMPLETE.
 **** - IN LIEU OF PROVIDING THE WINGWALL CONSTRUCTION JOINT, THE CONTRACTOR MAY FIELD DRILL HOLES IN THE TUBING FOR POST-TO-TUBE RAIL CONNECTIONS AT ALL FLUSH MOUNTED POST LOCATIONS. REPAIR GALVANIZING ACCORDING TO C&MS 711.02.



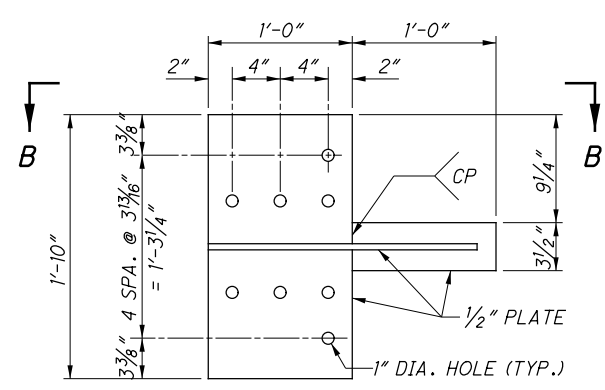
FLUSH MOUNTED POST ANCHOR DETAIL

(POST NOT SHOWN)

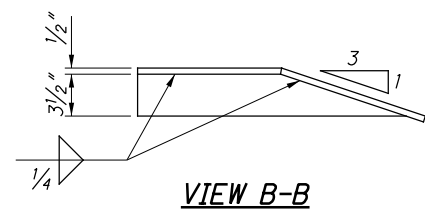


BASE PLATE
(1" PLATE)

SPACER PLATE
(3/8" PLATE)



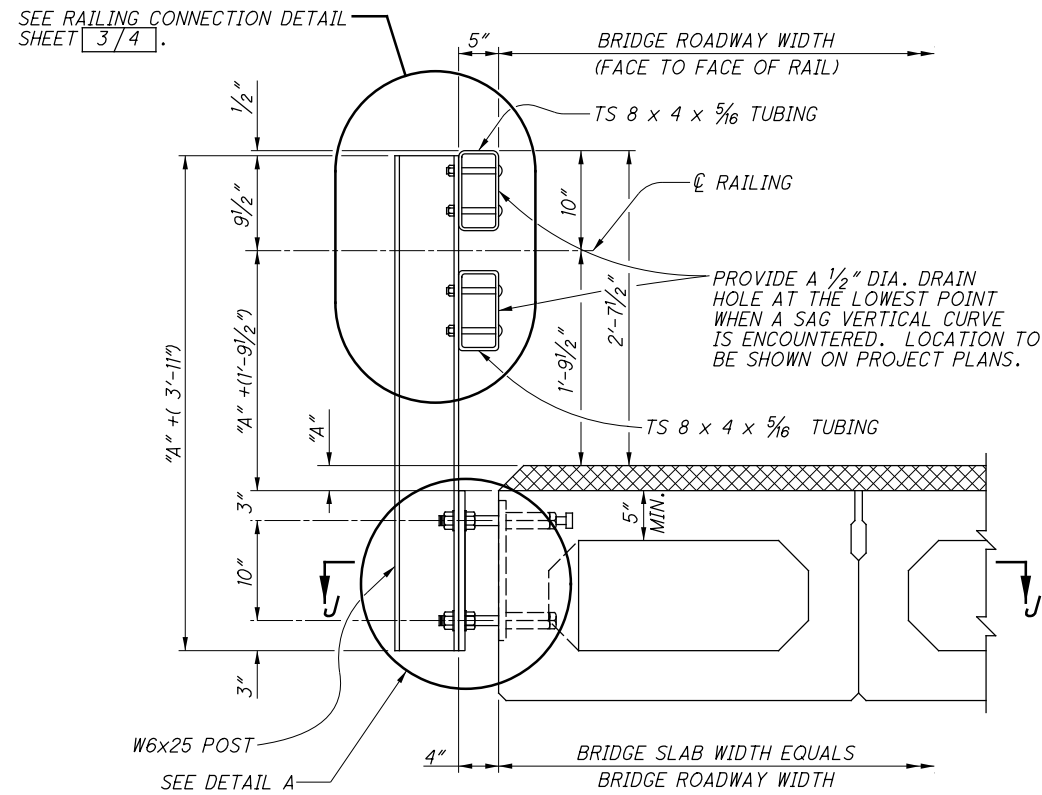
GUARDRAIL CONNECTION PLATE DETAILS



VIEW B-B

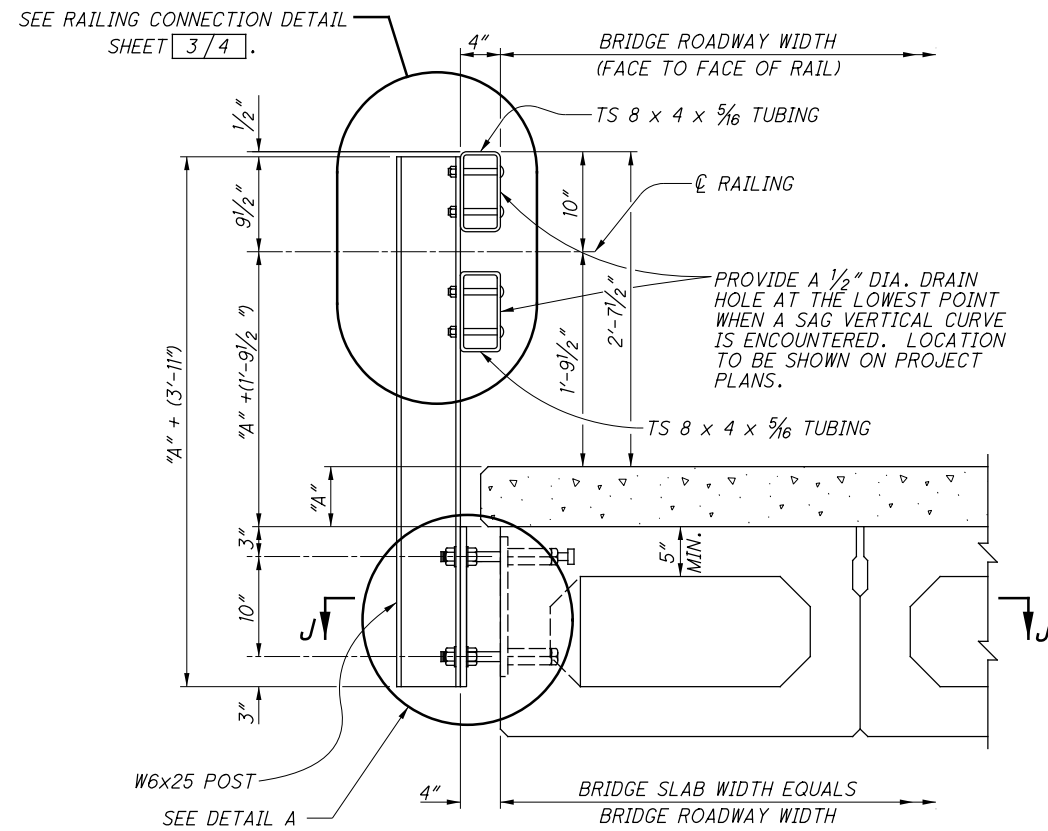
STATE OF OHIO DEPARTMENT OF TRANSPORTATION	DATE
ADMINISTRATOR	07-06-99
ADMINISTRATOR	Brad Fogwell
REVISIONS	
10-20-00	
07-19-02	
04-18-03	
10-17-03	
04-18-08	
01-17-14	
07-15-16	
07-20-18	
CHECKED	WTL
DESIGNED	SAM
DESIGNED	SAM
DESIGNED	SAM
OFFICE OF STRUCTURAL ENGINEERING	
STANDARD BRIDGE DRAWING	
TWIN STEEL TUBE BRIDGE RAILING	
SCD NUMBER	TST-1-99
1	4

I:\br\bridstds\english\revisions\07-20-18\Final Drawings\TST-1-99\st199_07-20-18.dgn 6/21/2018 7:05:48 AM smeddles



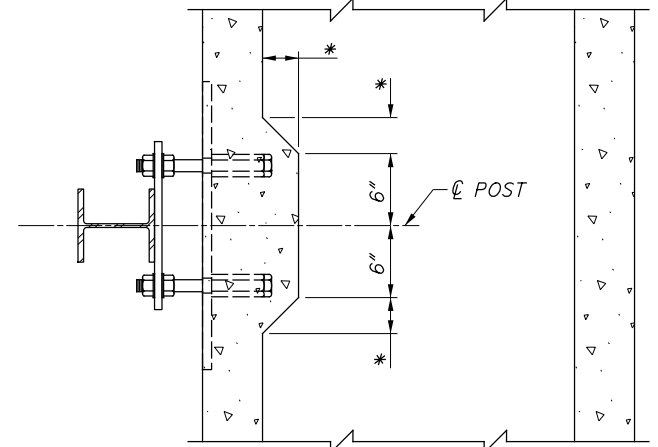
SECTION A-A

(FOR 17" AND DEEPER NONCOMPOSITE PRESTRESSED BOX BEAM BRIDGES)



SECTION A-A

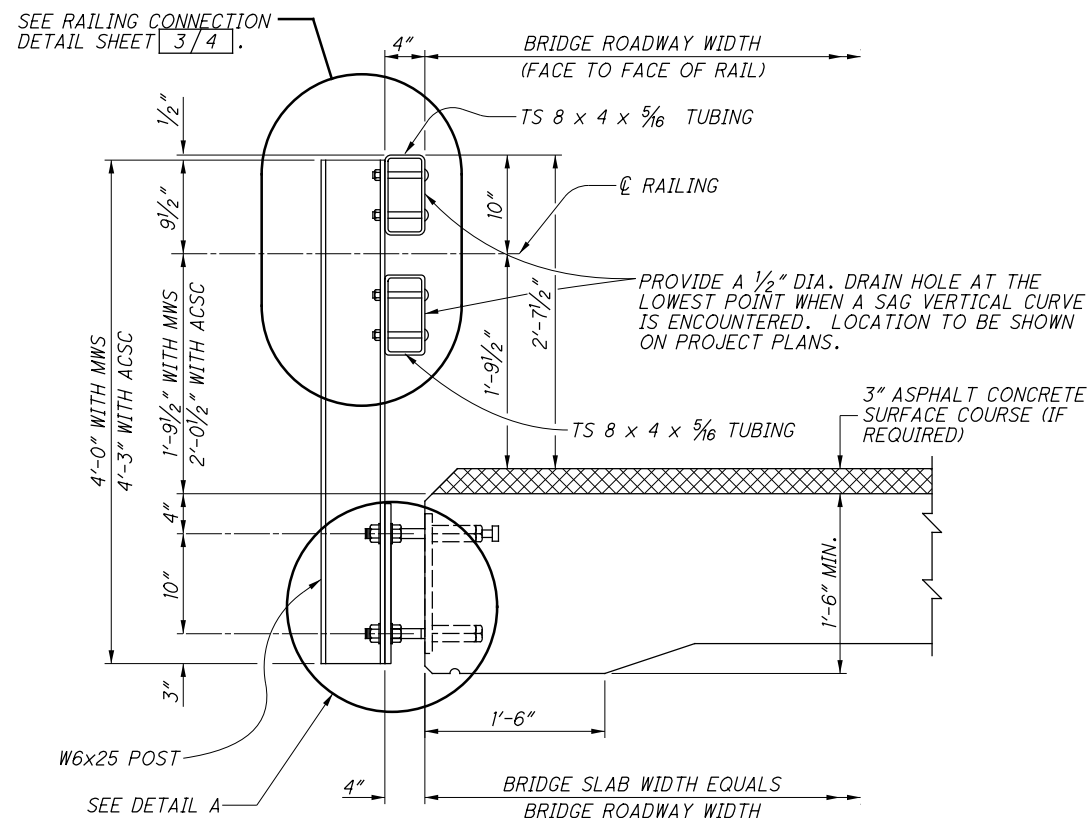
(FOR 17" AND DEEPER COMPOSITE PRESTRESSED BOX BEAM BRIDGES)



SECTION J-J

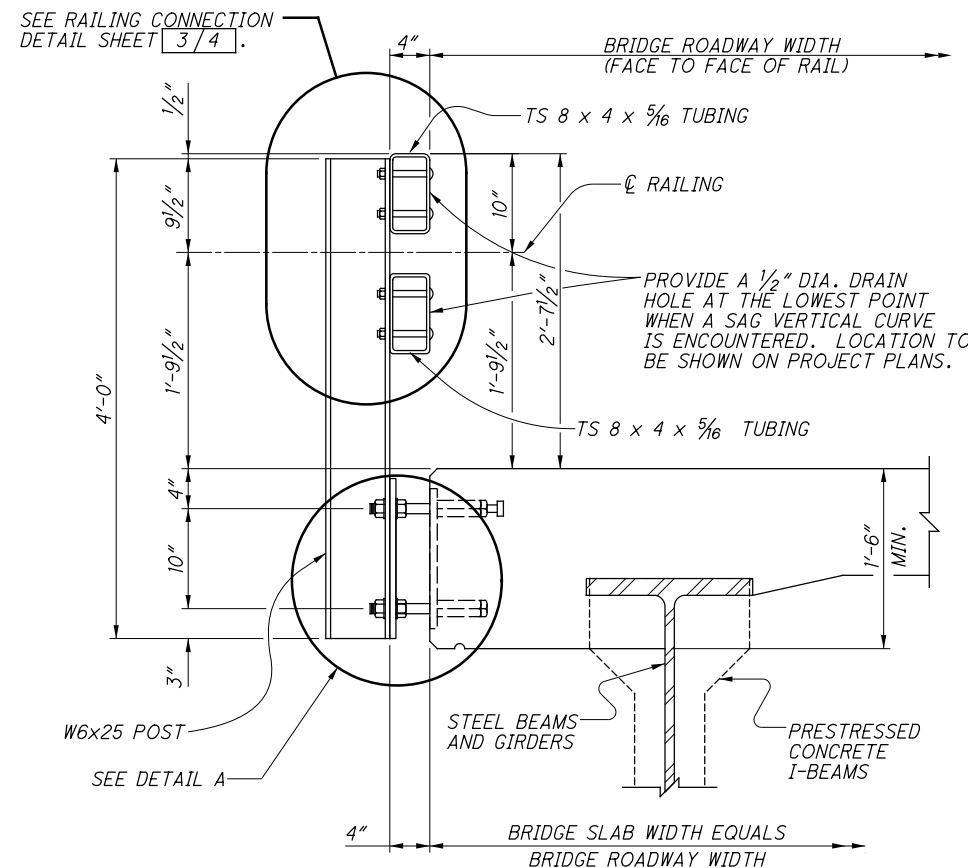
LEGEND

- MWS - MONOLITHIC WEARING SURFACE
- ACSC - ASPHALT CONCRETE SURFACE COURSE
- "A" - DECK OR OVERLAY THICKNESS, THIS DIMENSION VARIES ACROSS THE LENGTH OF THE BRIDGE.
- * - THIS DIMENSION IS THE SAME AS THE WIDTH OF FILLET IN THE BOX BEAMS'S VOID.



SECTION A-A

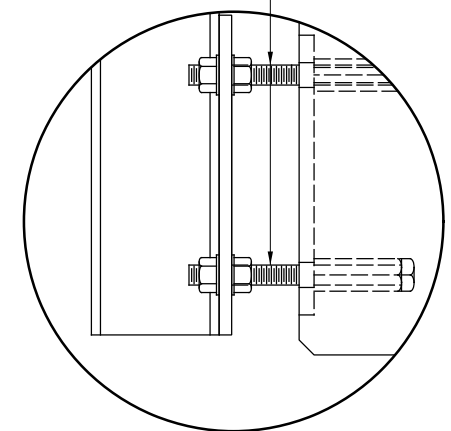
(FOR SLAB BRIDGES)



SECTION A-A

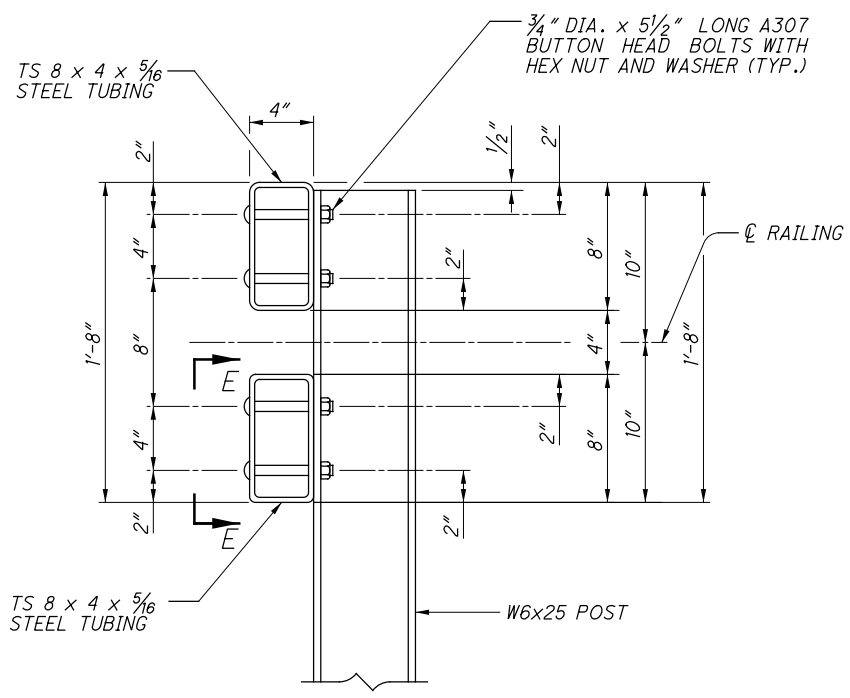
(FOR CONCRETE OR STEEL I-BEAM BRIDGES)

2 - 1" DIA. x 12" LONG ANCHOR BOLTS WITH MACHINE THREADS FULL LENGTH AND TWO HEX NUTS AND TWO 3" x 3" x 5/16" PLATE WASHERS PER BOLT.

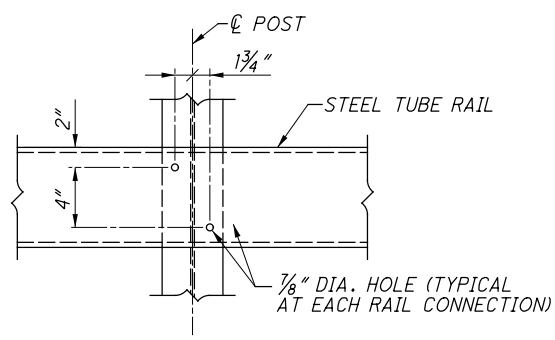


DETAIL A

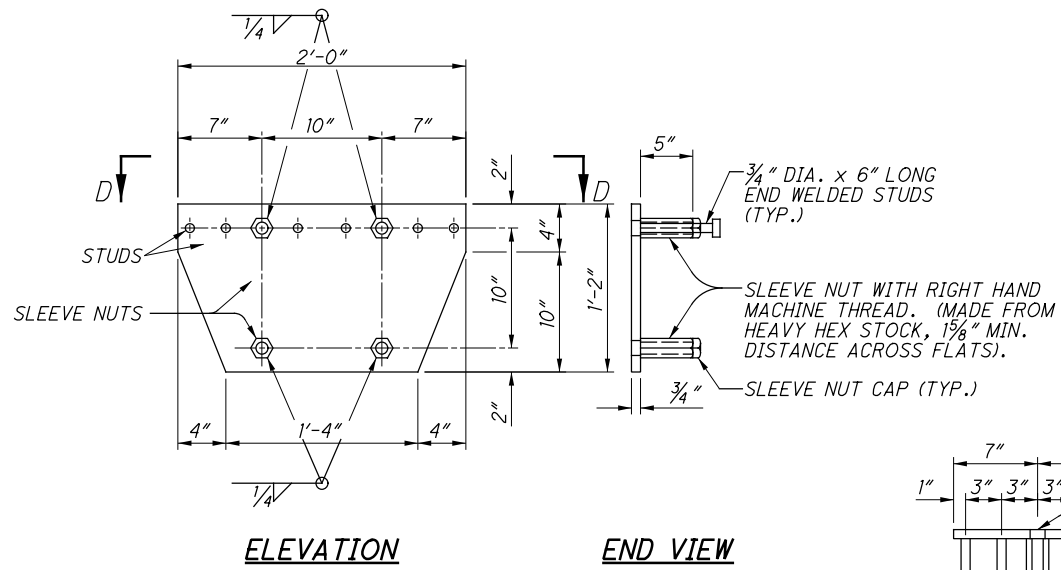
SCD NUMBER	TST-1-99	DATE	07-06-99
STANDARD BRIDGE DRAWING		ADMINISTRATOR	
OFFICE OF STRUCTURAL ENGINEERING		BRAD TAGGELL	
DESIGNED	CHECKED	REVIEWED	DATE
AUM/SAM	JS	WTL	07-06-99
DRAWN	REVIEWED	DATE	07-06-99
SAM	WTL	07-06-99	07-06-99
REVISIONS			
10-20-00			
07-19-02			
04-18-03			
10-17-03			
04-18-08			
01-17-14			
07-15-16			
07-20-18			
2 / 4			



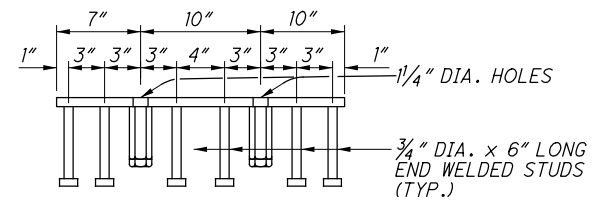
RAILING CONNECTION DETAIL



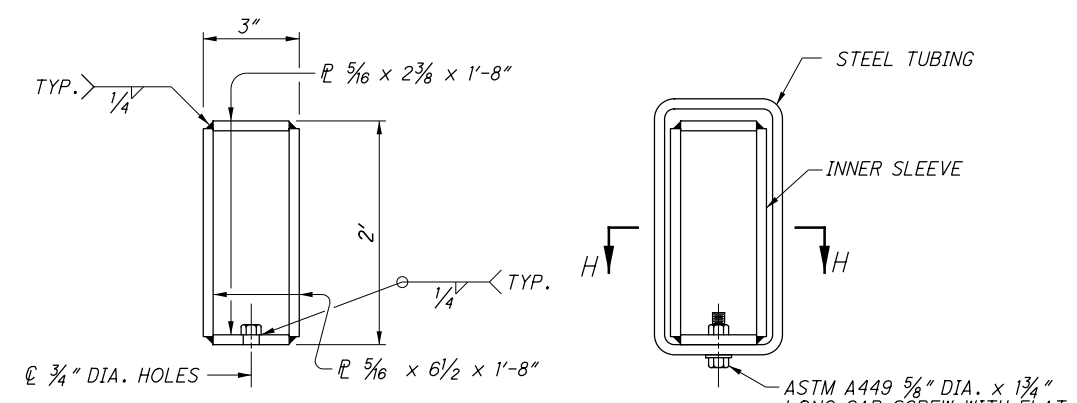
VIEW E-E



POST ANCHOR DEVICE

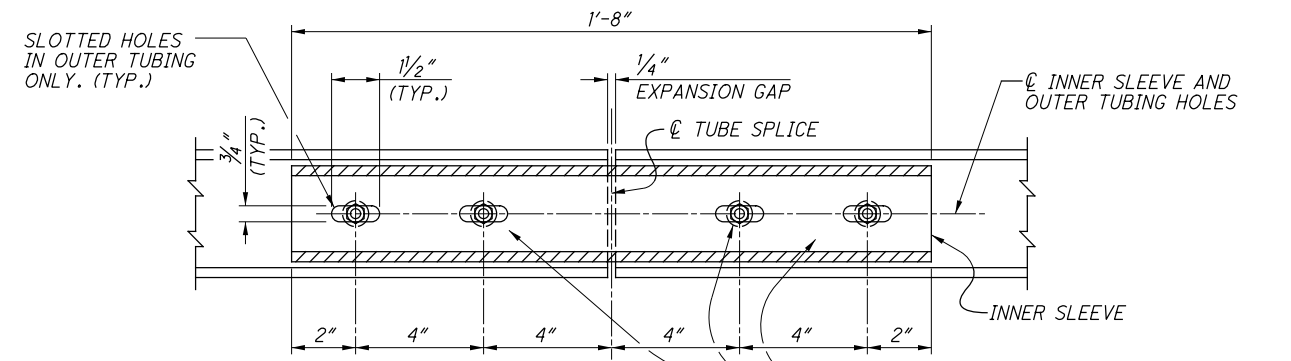


VIEW D-D



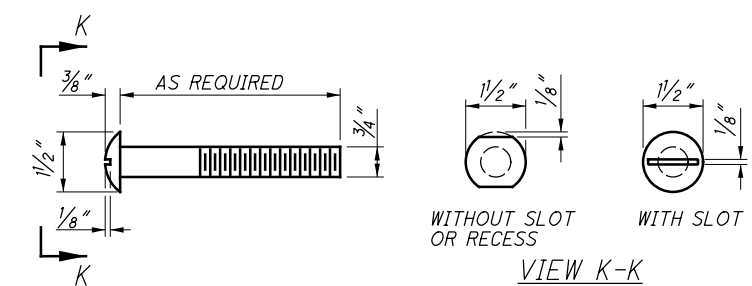
FINISHED DIMENSIONS OF INNER SLEEVE

SECTION THRU SPLICE

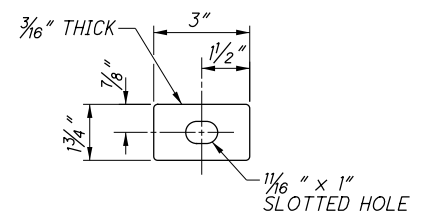


**SECTION H-H
STEEL TUBE SPLICE DETAILS**

BOLTS IN SLOTTED HOLES SHALL NOT BE DRAWN UP SO TIGHT AS TO PREVENT SLIDING BETWEEN THE OUTER TUBE AND THE INNER SPLICE.



DETAIL OF 3/4" DIA. ROUND HEAD BOLT



SPECIAL WASHER
PLACE WASHER BETWEEN BOLT HEAD AND FACE OF THRIE BEAM RAIL.

STATE OF OHIO DEPARTMENT OF TRANSPORTATION		DATE
ADMINISTRATOR		07-06-99
Brad Fogwell		
REVISIONS	CHECKED	DATE
10-20-00	JS	
07-19-02	WTL	
04-18-03		
10-17-03		
04-18-08		
01-17-14		
07-15-16		
07-20-18		
DESIGNED	REVIEWED	DATE
AJM/SAM	WTL	
DRAWN		
SAM		
OFFICE OF STRUCTURAL ENGINEERING		
STANDARD BRIDGE DRAWING		
TWIN STEEL TUBE BRIDGE RAILING		
SCD NUMBER	DATE	
TST-1-99		
3 / 4		

I:\br\bridstds\english\revisions\07-20-18\Final Drawings\TST-1-99\st199_07-20-18.dgn 6/21/2018 7:06:15 AM smeedies

TST-1-99 GENERAL NOTES:

GENERAL: THIS DRAWING PROVIDES DESIGN AND CONSTRUCTION DETAILS. THE PROJECT PLANS FOR EACH STRUCTURE SHALL PROVIDE NECESSARY ADDITIONAL RAILING DIMENSIONS INCLUDING RAILING LENGTHS, POST SPACINGS, POST LENGTHS AND ANY OTHER PERTINENT INFORMATION INCLUDING SPECIAL NOTES AND DETAILS. FOR ADDITIONAL GUARDRAIL DETAILS, SEE STD. CONSTR. DWGS. MGS-1.1, MGS-2.1 AND OTHER DRAWINGS PERTAINING TO DESIGN OF SPECIFIC GUARDRAIL TYPES.

APPLICATION: THIS RAILING SYSTEM HAS BEEN ACCEPTED TO THE TL-4 CRITERIA OF NCHRP REPORT 350. THE TWIN STEEL TUBE RAILING SHALL BE USED ON STRUCTURES DESIGNED TO DRAIN SURFACE WATER OVER THE SIDES OF THE STRUCTURE. THIS RAILING IS NOT APPLICABLE TO COMPOSITE BOX BEAM BRIDGES WITH DESIGN OVERHANGS GREATER THAN 2" OR TOP FLANGE THICKNESSES LESS THAN 5".

CONNECT THE APPROACH AND TRAILING ENDS OF THE TWIN STEEL TUBE RAILING TO THE BRIDGE TERMINAL ASSEMBLY DETAILED IN STANDARD CONSTRUCTION DRAWING MGS-3.1. THE FIRST POST AT THE APPROACH END AND THE LAST POST AT THE TRAILING END OF THE BRIDGE RAILING SHALL BE FLUSH MOUNTED AS SHOWN ON SHEET 1 OF 4.

DESIGN DATA:

REINFORCING STEEL - MINIMUM YIELD STRENGTH = 60,000 PSI
 STEEL TUBING - MINIMUM YIELD STRENGTH = 46,000 PSI
 ALL OTHER STEEL - MINIMUM YIELD STRENGTH = 50,000 PSI

MATERIALS: FURNISH SHAPED STRUCTURAL TUBING ACCORDING TO 707.10 (ASTM A500, GRADE B). IN LIEU OF THE "DROP WEIGHT TEAR TEST" (ASTM E436), THE MANUFACTURER MAY CHOOSE TO SUPPLY TUBING THAT MEETS IMPACT TOUGHNESS ACCORDING TO AASHTO T266, "NOTCHED BAR IMPACT TESTING OF METALLIC MATERIALS (CVN)". THE CVN IMPACT REQUIREMENTS SHALL BE 15 FT-LBS AT 0°F. FOR EACH HEAT SUPPLIED, THE MANUFACTURER SHALL FURNISH ONE 2" x 18" SPECIMEN, MARKED WITH ITS HEAT NUMBER, FOR IMPACT TESTING.

FURNISH STRUCTURAL STEEL SHAPES, PLATES AND PLATE WASHERS ACCORDING TO 711.01.

GALVANIZING: GALVANIZE ALL SHAPED STRUCTURAL TUBES, POSTS, PLATES, HARDWARE AND ACCESSORIES IN ACCORDANCE WITH 711.02. PRIOR TO GALVANIZING, ROUND ALL STRUCTURAL TUBING ENDS AND REMOVE BURRS FROM ALL STEEL TUBING, SHAPES AND PLATES.

HORIZONTAL CURVATURE: THIS STANDARD IS APPLICABLE TO STRUCTURES HAVING A RAILING CURVATURE RADIUS OF 20 FEET OR MORE. FOR A RADIUS OF LESS THAN 20 FEET, THE DESIGN SHALL BE SPECIAL. FOR ALL CURVED STRUCTURES, HEAT CURVE THE HORIZONTAL RAIL ELEMENTS ACCORDING TO THE AASHTO LRFD BRIDGE CONSTRUCTION SPECIFICATIONS.

TUBE SPLICES: LOCATE SPLICES SO THAT EACH TUBE SEGMENT IS CONNECTED TO NOT LESS THAN TWO POSTS. STAGGER SPLICES IN THE TOP AND BOTTOM TUBES TO AVOID OCCURRENCES IN THE SAME PANEL.

FASTENERS: FURNISH MATERIAL CONFORMING TO THE FOLLOWING:

ALL ANCHOR BOLTS, SLEEVE NUTS, NUTS AND WASHERS SHALL CONFORM TO ASTM A 449.

END WELDED STUDS SHALL CONFORM TO ASTM A108.

THE TUBE RAIL TO POST CONNECTION BOLTS AND HEX NUTS SHALL CONFORM TO 711.10 (ASTM A307). REFER TO STANDARD CONSTRUCTION DRAWING MGS-3.1 FOR THE BRIDGE TERMINAL ASSEMBLY CONNECTION HARDWARE.

THE HEX CAP SCREWS (BOLTS), HEX NUTS AND WASHERS SHALL CONFORM TO ASTM A 449.

BOX BEAMS: THE DISTANCE FROM THE CENTERLINE OF A GUARDRAIL POST TO THE ABUTMENT END OF THE BEAM OR TO THE CENTERLINE OF A TIE ROD SHALL NOT BE LESS THAN 1'-8". THE DISTANCE FROM THE CENTERLINE OF A GUARDRAIL POST TO THE PIER END OF THE BEAM SHALL NOT BE LESS THAN 2'-10". THE LOCATION OF THE HORIZONTAL TIE RODS MAY NEED TO BE ADJUSTED IN ORDER TO ACCOMMODATE EACH POST ANCHOR DEVICE.

METHOD OF MEASUREMENT: THE DEPARTMENT WILL MEASURE TWIN STEEL TUBE BRIDGE RAILING BY THE NUMBER OF FEET. THE DEPARTMENT WILL MEASURE THE LENGTH OF RAILING AS THE DISTANCE BETWEEN THE CENTERS OF THE FLUSH MOUNTED POSTS AT THE APPROACH AND TRAILING ENDS PLUS 4'-11".

BASIS OF PAYMENT: THE DEPARTMENT WILL CONSIDER THE COSTS ASSOCIATED WITH FURNISHING AND INSTALLING STEEL TUBING, STEEL POSTS, POST ANCHOR DEVICES, ANCHOR PLATES, TUBE SPLICE PLATES, STEEL SHIM PLATES, GUARDRAIL CONNECTION PLATES, ANCHOR BOLTS, 3/4" ROUND HEAD BOLTS, SLEEVE NUTS, NUTS, CAP SCREWS, WASHERS AND OTHER HARDWARE TO BE INCLUDED WITH THE TWIN STEEL TUBE RAILING. THE DEPARTMENT WILL PAY FOR ACCEPTED QUANTITIES AT THE CONTRACT PRICE FOR ITEM 517, RAILING (TWIN STEEL TUBE).

THE DEPARTMENT WILL PAY FOR BRIDGE TERMINAL ASSEMBLY HARDWARE SEPARATELY.

I:\br\bridstds\english\revisions\07-20-18\Final Drawings\TST-1-99\Tst199_07-20-18.dgn 6/21/2018 7:06:41 AM smeedies

SCD NUMBER TST-1-99	STANDARD BRIDGE DRAWING TWIN STEEL TUBE BRIDGE RAILING	OFFICE OF STRUCTURAL ENGINEERING	STATE OF OHIO DEPARTMENT OF TRANSPORTATION <i>Brad Fogwell</i> ADMINISTRATOR													
4 / 4			DATE 07-06-99													
			<table border="1" style="width:100%; border-collapse: collapse;"> <tr> <th style="text-align: left;">REVISIONS</th> </tr> <tr> <td>10-20-00</td> </tr> <tr> <td>07-19-02</td> </tr> <tr> <td>04-18-03</td> </tr> <tr> <td>10-17-03</td> </tr> <tr> <td>04-18-08</td> </tr> <tr> <td>01-17-14</td> </tr> <tr> <td>07-15-16</td> </tr> <tr> <td>07-20-18</td> </tr> </table> <table border="1" style="width:100%; border-collapse: collapse;"> <tr> <td style="text-align: center;">CHECKED JS</td> <td style="text-align: center;">REVIEWED WTL</td> </tr> <tr> <td style="text-align: center;">DESIGNED AJM/SAM</td> <td style="text-align: center;">DRAWN SAM</td> </tr> </table>	REVISIONS	10-20-00	07-19-02	04-18-03	10-17-03	04-18-08	01-17-14	07-15-16	07-20-18	CHECKED JS	REVIEWED WTL	DESIGNED AJM/SAM	DRAWN SAM
REVISIONS																
10-20-00																
07-19-02																
04-18-03																
10-17-03																
04-18-08																
01-17-14																
07-15-16																
07-20-18																
CHECKED JS	REVIEWED WTL															
DESIGNED AJM/SAM	DRAWN SAM															