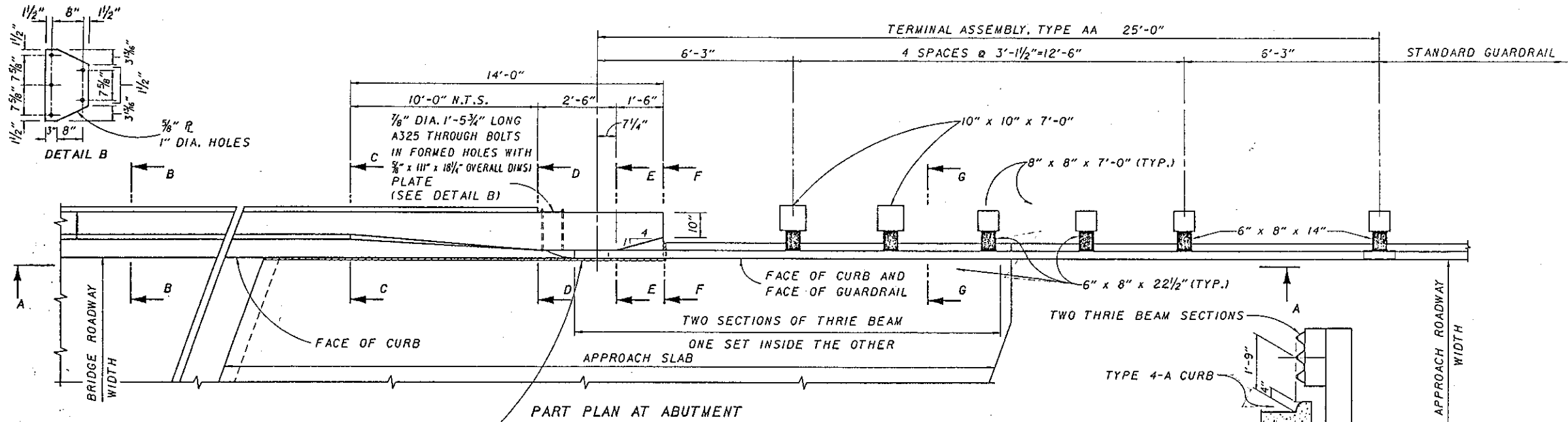


FED. RD. DIVISION	STATE	PROJECT	TYPE FUNDS
5	OHIO		



GENERAL NOTES
 DESIGN SPECIFICATIONS: "STANDARD SPECIFICATIONS FOR HIGHWAY BRIDGES" ADOPTED BY AASHTO, 1989, INCLUDING THE OHIO "SUPPLEMENT" TO THESE SPECIFICATIONS.

DESIGN DATA: CONCRETE CLASS S $f_c=4500$ P.S.I., $f_t=1500$ P.S.I. REINFORCING STEEL ASTM A615, A616 OR A617 GRADE 60 $f_s=24,000$ P.S.I.

PERFORMED EXPANSION JOINT FILLER IN THE PARAPET DEFLECTION JOINTS MAY BE EITHER 1/4" GRAY SPONGE RUBBER OR 1/4" GRAY CELLULAR POLYVINYL CHLORIDE (PVC) SPONGE. SPONGE RUBBER FILLER SHALL CONFORM TO AASHTO M-153, TYPE I. DENSITY OF PVC SPONGE NOT BE LESS THAN 20 LBS. PER CU. FT.

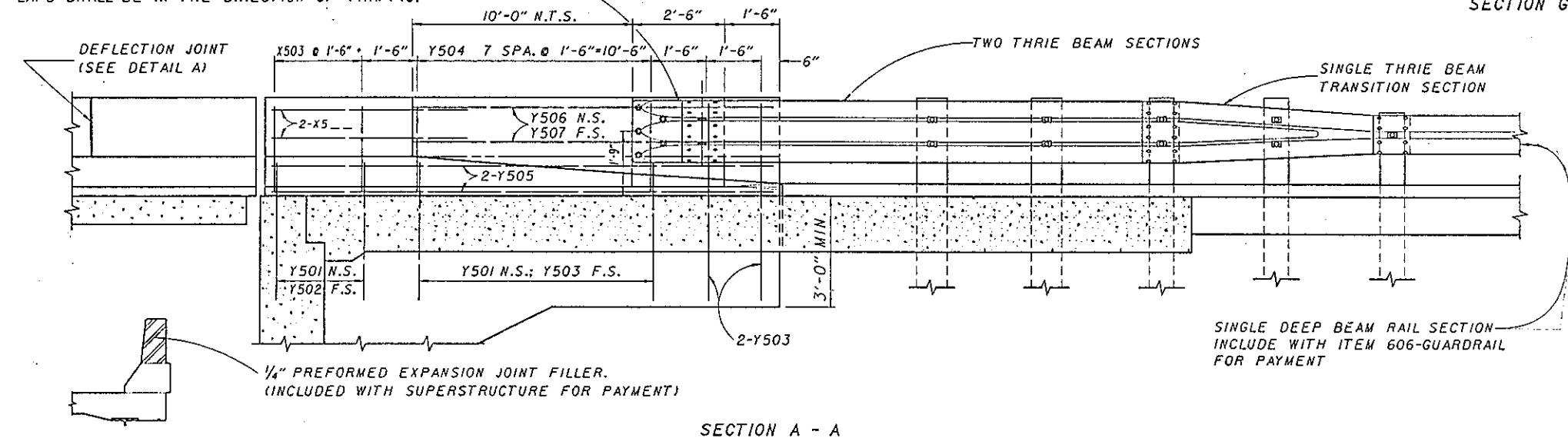
DEFLECTION JOINTS SHALL BE SPACED AT 16'-0" CENTERS, MAX., EXCEPT THAT FOR CONTINUOUS STRUCTURES THE PANELS SHALL BE FURTHER SUBDIVIDED IN THE NEGATIVE MOMENT REGION (OVER THE PIERS) INTO LENGTHS OF NOT LESS THAN 5'-0" NOR MORE THAN 7'-6". REINFORCING BARS SHALL NOT EXTEND THROUGH DEFLECTION JOINTS.

CONCRETE PARAPETS ABOVE UPPER CONSTRUCTION JOINT SHALL BE PLACED IN ALTERNATE SECTIONS BY THE USE OF BULKHEADS. CLOSING SECTIONS SHALL BE PLACED AFTER REMOVAL OF BULKHEADS AND AFTER PLACEMENT OF EXPANSION JOINT FILLER. EXPOSED EDGES OF THE FILLER SHALL BE FLUSH WITH THE SURFACE OF CONCRETE AND SHALL BE FREE OF MORTAR.

PAYMENT: ADDITIONAL GUARDRAIL COST IN EXCESS OF NORMAL GUARDRAIL COST, SUCH AS: TERMINAL CONNECTOR, STEEL PLATE, BOLTS, NUTS, PLATE WASHERS AND OTHER HARDWARE SHALL BE INCLUDED WITH BRIDGE TERMINAL ASSEMBLY FOR PAYMENT. QUANTITIES OF CONCRETE AND REINFORCING STEEL FOR PARAPET ARE INCLUDED WITH THEIR APPROPRIATE ITEM UNDER EITHER ABUTMENTS OR SUPERSTRUCTURE FOR PAYMENT.

POSTS SHALL BE SQUARE-SAWED PRESSURE TREATED WOOD AS PER 710.14. POSTS SHALL BE FABRICATED WITH SQUARE ENDS. BOLT HOLES SHALL BE BORED AND TOPS OF POSTS TRIMMED, IF REQUIRED, AFTER POSTS ARE SET. POSTS MAY BE SET IN DRILLED HOLES OR DRIVEN TO GRADE. STEEL POSTS AND BLOCKOUTS MAY BE FURNISHED AS AN ALTERNATE, PROVIDED THAT THE STRENGTH EQUALS OR EXCEEDS THE STRENGTH OF WOOD POSTS AND BLOCKOUTS.

NOTE: THE THRIE BEAM TERMINAL CONNECTOR SHALL FIT UNDER THE STANDARD GUARDRAIL SECTION AT THE APPROACH END. ALL LAPS SHALL BE IN THE DIRECTION OF TRAFFIC.

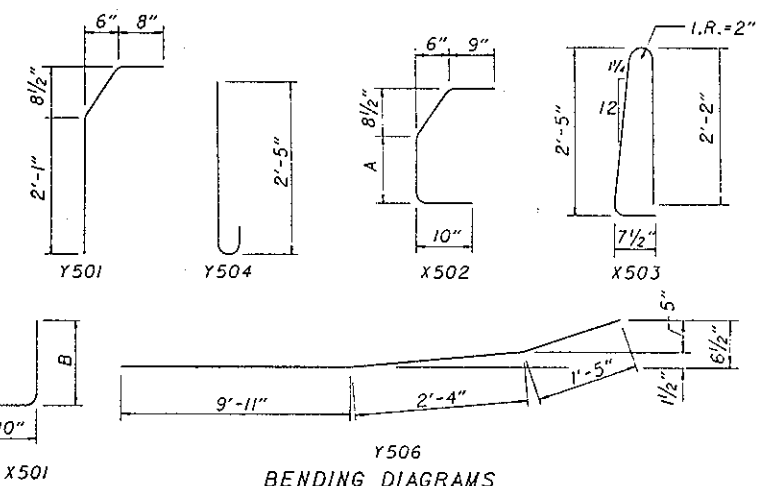
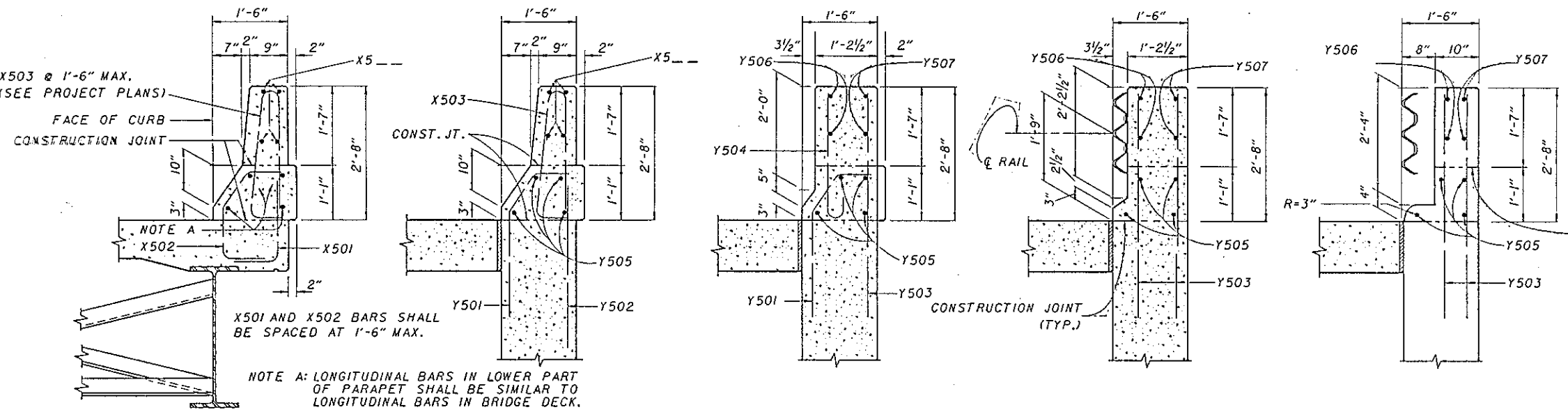


REINFORCING BAR LIST

MARK	LENGTH	SHP.
X501	8'-8 1/2"	BT.
X502	A-2'-3"	BT.
X503	5'-3"	BT.
X5	Ø	STR.
Y501	3'-7"	BT.
Y502	2'-9"	STR.
Y503	4'-4"	STR.
Y504	3'-0"	BT.
Y505	AS REQ.	STR.
Y506	13'-8"	BT.
Y507	13'-8"	STR.

Ø SEE PROJECT PLANS ALL REINFORCING BARS SHALL BE EPOXY COATED

DETAIL A SECTION THROUGH DEFLECTION JOINT



STATE OF OHIO
 DEPARTMENT OF TRANSPORTATION
 BUREAU OF BRIDGES AND STRUCTURAL DESIGN

**BRIDGE RAILING
 DEFLECTOR PARAPET TYPE**

DESIGNED	DRAWN	TRACED	CHECKED	REVIEWED	DATE	REVISED
FFE	JC			WTF	10-25-89	1-23-90 4-3-90