

DESIGN SPECIFICATIONS: "STANDARD SPECIFICATIONS FOR HIGHWAY BRIDGES" ADOPTED BY AASHTO, 1992, INCLUDING THE 1993 INTERIM SPECIFICATION.

DESIGN DATA: CONCRETE CLASS S f'c = 31 MPa, REINFORCING STEEL ASTM A615, A617 GRADE 400 fy = 400 MPa.

CONTROL JOINTS FOR CONCRETE PARAPETS: THE JOINTS SHALL BE CONSTRUCTED BY SAWING 25 mm DEEP ALONG PERIMETER OF THE PARAPET AS SOON AS THE SAW CAN BE OPERATED WITH OUT DAMAGING THE CONCRETE.

THE USE OF AN EDGE GUIDE, FENCE, OR JIG IS REQUIRED TO INSURE THAT THE CUT JOINT IS STRAIGHT, TRUE, AND ALIGNED ON ALL FACES OF THE PARAPET. THE JOINT WIDTH SHALL BE THE WIDTH OF THE SAW BLADE, A NOMINAL WIDTH OF 6 mm.

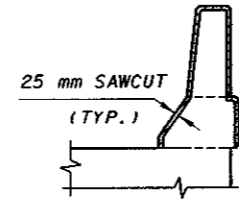
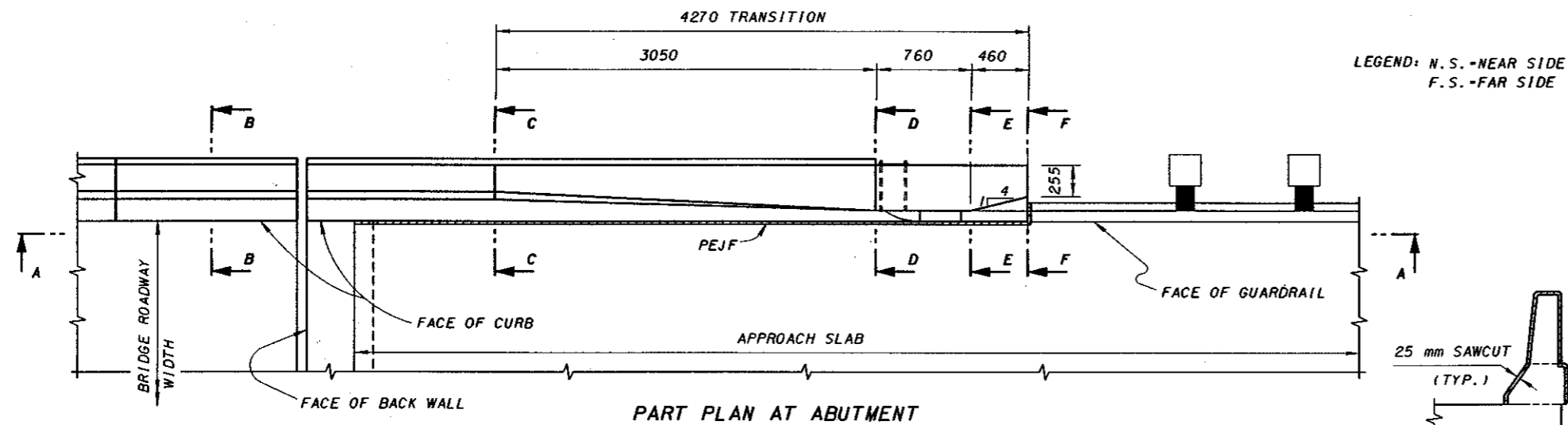
THE PERIMETER OF THE DEFLECTION CONTROL JOINT SHALL BE SEALED WITH A CAULKING MATERIAL TO A MINIMUM DEPTH OF 25 mm CONFORMING TO FEDERAL SPECIFICATION TT-S-00227E. THE BOTTOM 13 mm OF BOTH THE INSIDE AND OUTSIDE FACES OF THE PARAPET SHOULD BE LEFT UNSEALED TO ALLOW ANY WATER WHICH MAY ENTER THE JOINT TO ESCAPE.

SAWCUT SHALL BE PLACED AT A MINIMUM OF 1800 mm AND MAXIMUM OF 3050 mm CENTERS.

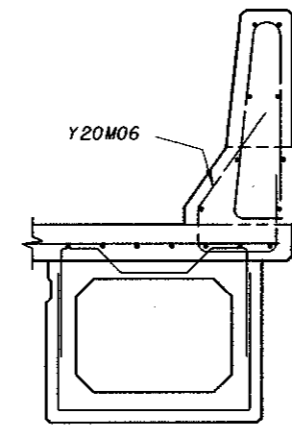
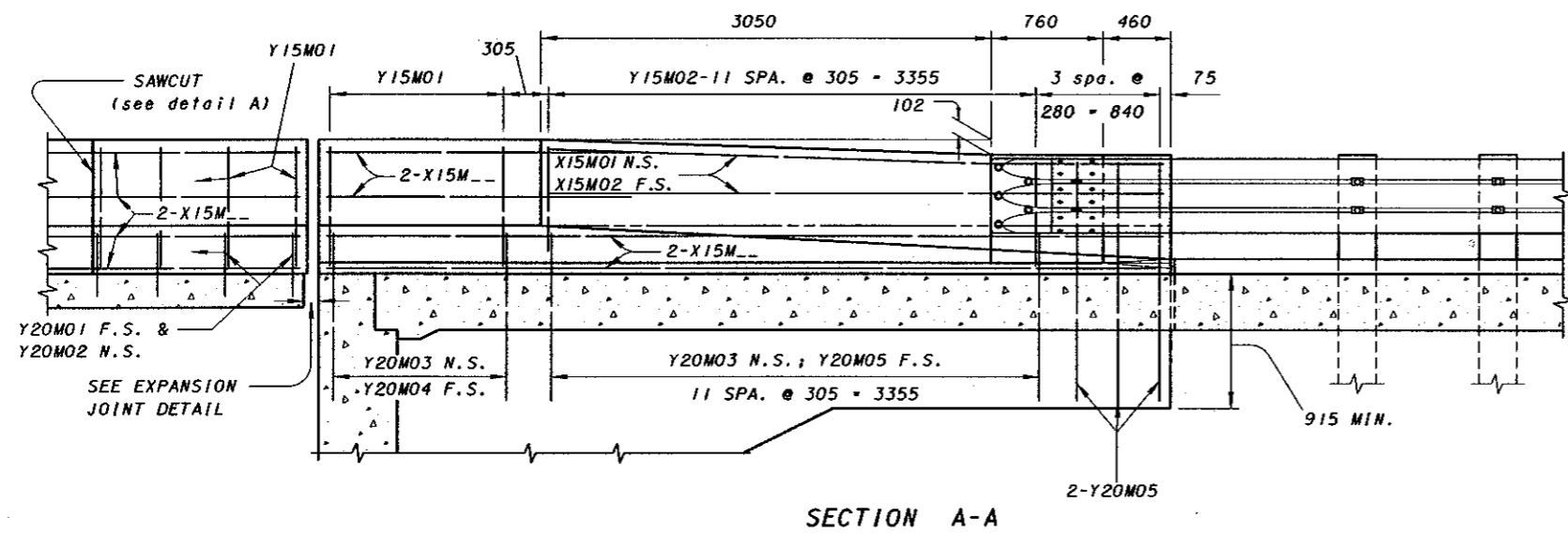
QUANTITIES OF CONCRETE, REINFORCING STEEL, DEFLECTION JOINT SAWCUT AND CAULKING MATERIAL FOR PARAPET ARE INCLUDED WITH APPROPRIATE ITEM UNDER EITHER ABUTMENTS OR SUPERSTRUCTURE FOR PAYMENTS.

FOR BRIDGE TERMINAL ASSEMBLY SEE STANDARD CONSTRUCTION DRAWING GR-3.1M AND GR-3.2M.

LEGEND: N.S.-NEAR SIDE
F.S.-FAR SIDE

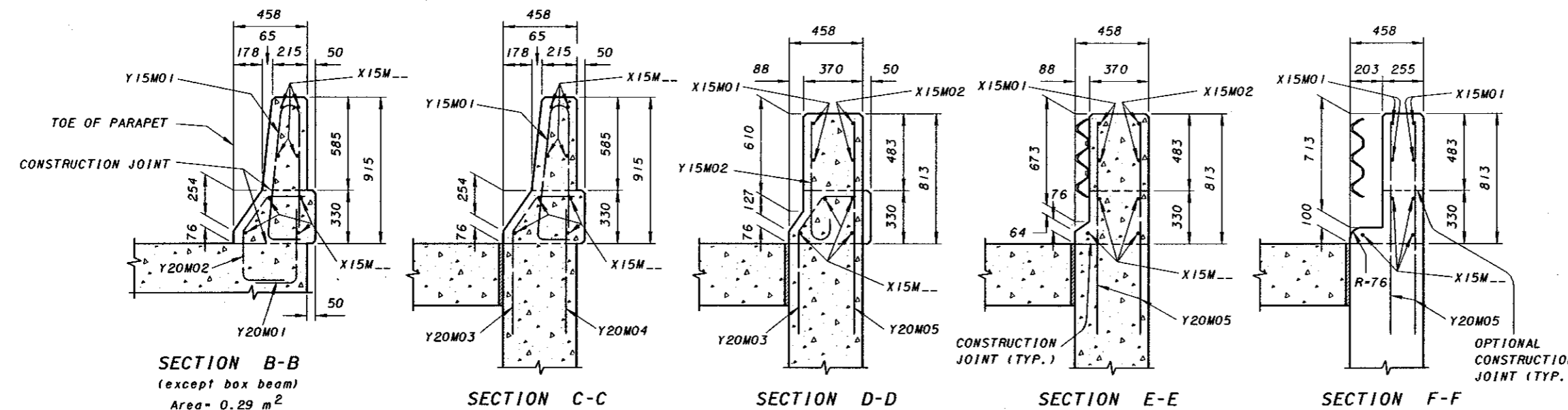


DETAIL A
(section through sawcut)
Sawcut Perimeter = 2160 mm



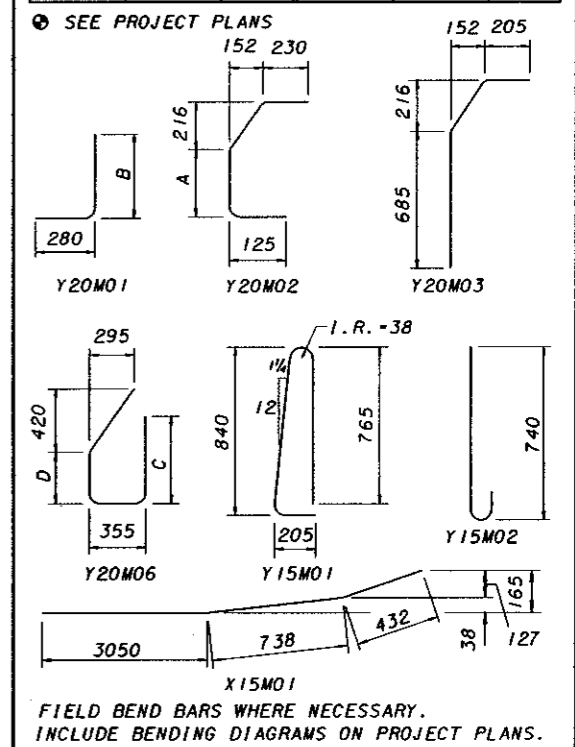
BOX BEAM REINFORCING DETAIL
(composite deck)

VERTICAL BARS SHALL BE SPACED AT 305 mm MAXIMUM.
(see project plans)



Volume of 4270 mm transition section is 1.3 m³

REINFORCING BAR LIST					
MARK	LENGTH	SHP.	MARK	LENGTH	SHP.
X15M01	4220	BT.	Y20M01	B+230	BT.
X15M02	4220	STR.	Y20M02	A+550	BT.
			Y20M03	1135	BT.
X15M	⊕	STR.	Y20M04	865	STR.
			Y20M05	1375	STR.
Y15M01	1825	BT.	Y20M06	C+0.760	BT.
Y15M02	920	BT.			



FIELD BEND BARS WHERE NECESSARY.
INCLUDE BENDING DIAGRAMS ON PROJECT PLANS.

DESIGN AGENCY
BUREAU OF BRIDGES
AND
STRUCTURAL DESIGN

STATE OF OHIO DEPARTMENT OF TRANSPORTATION
12-15-94
DATE
Richard L. Engel
ENGINEER OF BRIDGES

CHECKED J.S.
REVIEWED L.M.W.
BR-1M

STANDARD
BRIDGE RAILING
DEFLECTOR PARAPET TYPE
915 mm