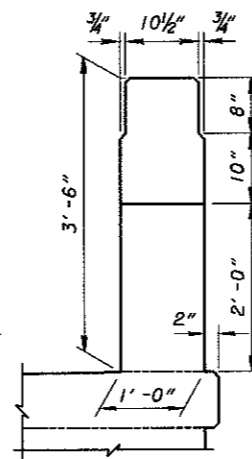
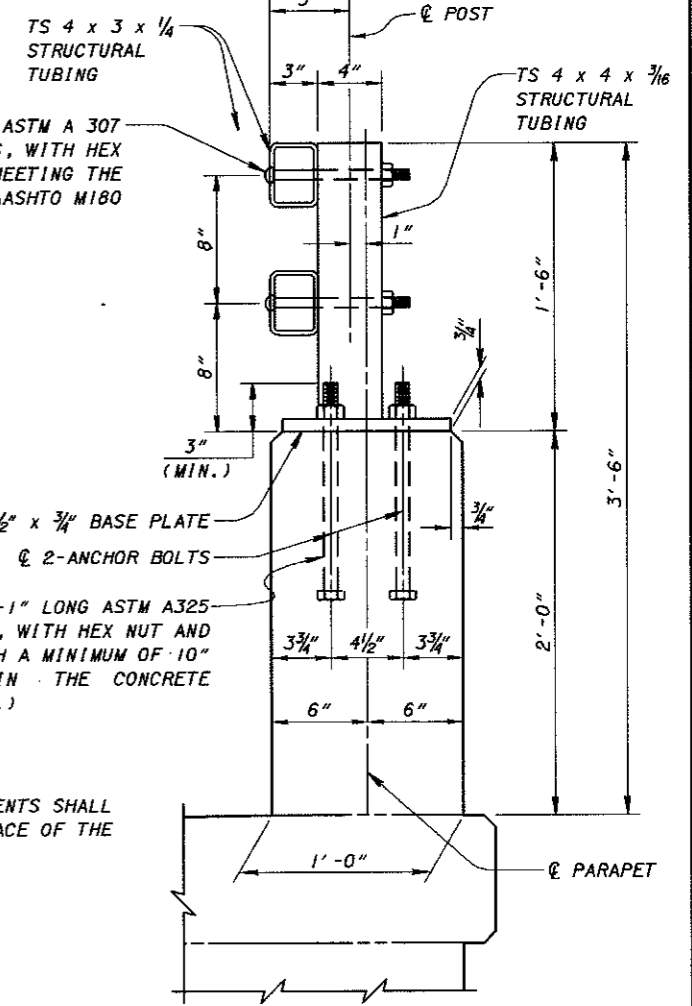


BRIDGE SIDEWALK RAILING WITH NO APPROACH RAILING



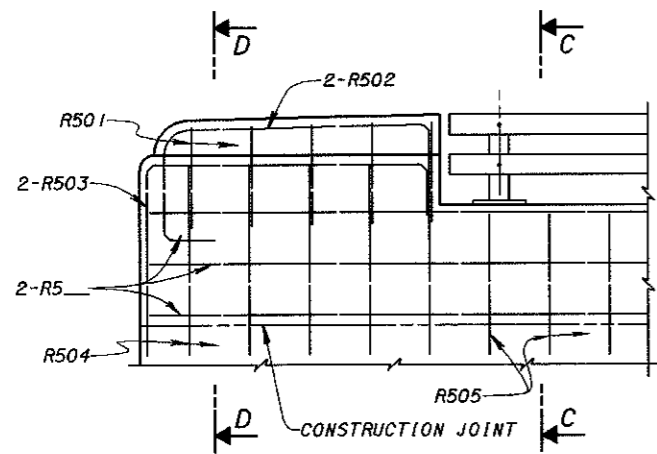
SECTION B-B

5/8" DIA. x 8 1/2" LONG ASTM A 307 BUTTON HEAD BOLTS, WITH HEX NUT AND WASHER, MEETING THE REQUIREMENTS OF AASHTO M180 (TYP.)



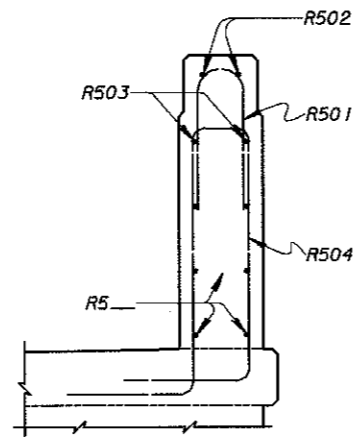
SECTION A-A

NOTE: THE HORIZONTAL RAILING ELEMENTS SHALL BE PLACED FLUSH WITH THE FACE OF THE PARAPET WALL.

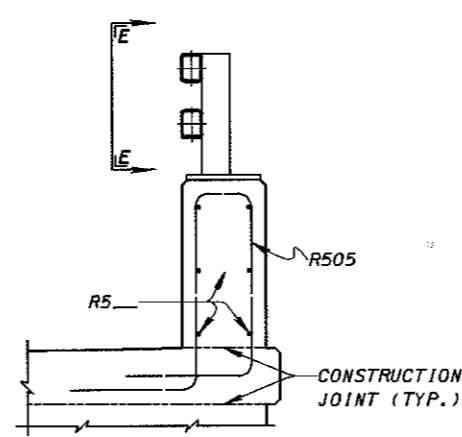


ELEVATION

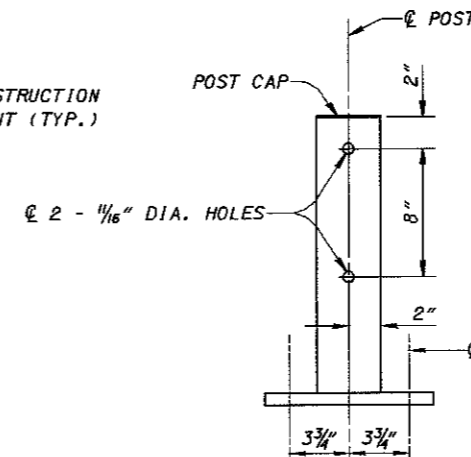
VERTICAL BARS SHALL BE SPACED AT 1'-0" MAXIMUM. (see project plans)



SECTION D-D

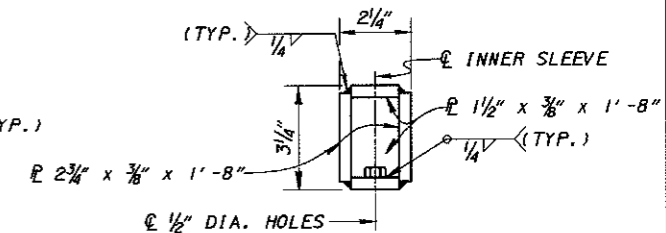


SECTION C-C

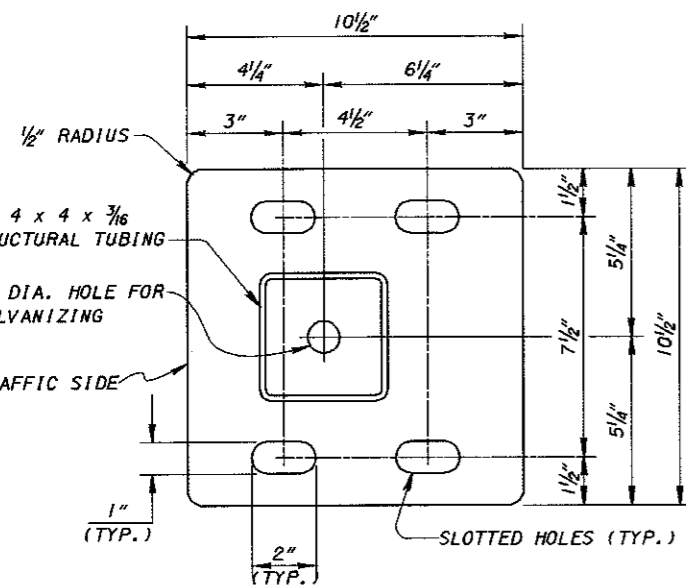


VIEW E-E

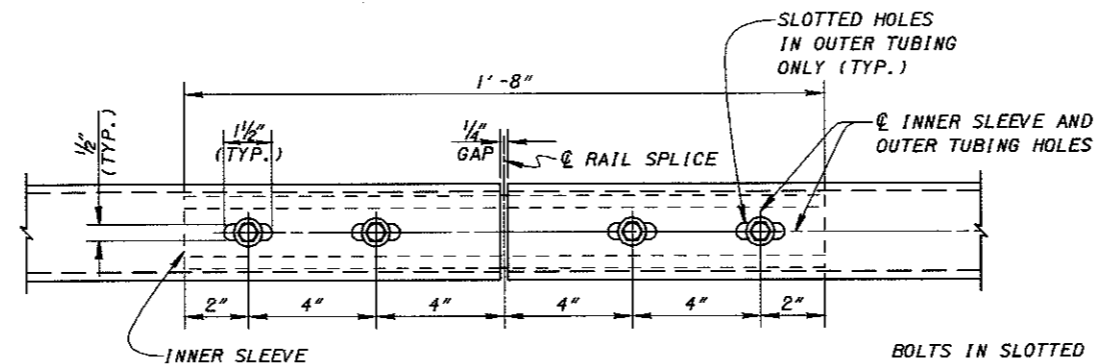
(Tube rail not shown for clarity) (SEE SHEET 2/3 FOR POST CAP DETAILS)



INNER SLEEVE

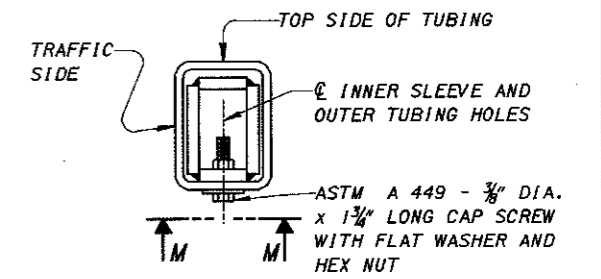


BASE PLATE DETAIL



VIEW M-M

BOLTS IN SLOTTED HOLES SHALL NOT BE DRAWN UP SO TIGHT AS TO PREVENT SLIDING BETWEEN THE OUTER TUBE AND THE INNER SLEEVE.



RAIL SPLICE DETAILS

DESIGN AGENCY	OFFICE OF	STRUCTURAL ENGINEERING
STATE OF OHIO DEPARTMENT OF TRANSPORTATION	12-29-98	DATE
ADMINISTRATOR	Brad Fogwell	
REVIEWED	WTL	BR-2-98
CHECKED	SDS	
DESIGNED	J.S.	
DRAWN	SAM	
STANDARD	BRIDGE SIDEWALK RAILING WITH CONCRETE PARAPETS	
	1/3	