

LEGEND: N.S. - NEAR SIDE
F.S. - FAR SIDE

DESIGN SPECIFICATIONS: "STANDARD SPECIFICATIONS FOR HIGHWAY BRIDGES" ADOPTED BY AASHTO, 1996, AND THE ODOT BRIDGE DESIGN MANUAL.

DESIGN DATA: CONCRETE CLASS S $f'_c = 4500$ PSI, REINFORCING STEEL ASTM A615, A616 OR A617 GRADE 60 $f_y = 60,000$ PSI.

CONTROL JOINTS FOR CONCRETE PARAPETS: THE JOINTS SHALL BE CONSTRUCTED BY SAWING 1/4 INCH DEEP ALONG THE PERIMETER OF THE PARAPET AS SOON AS THE SAW CAN BE OPERATED WITHOUT DAMAGING THE CONCRETE.

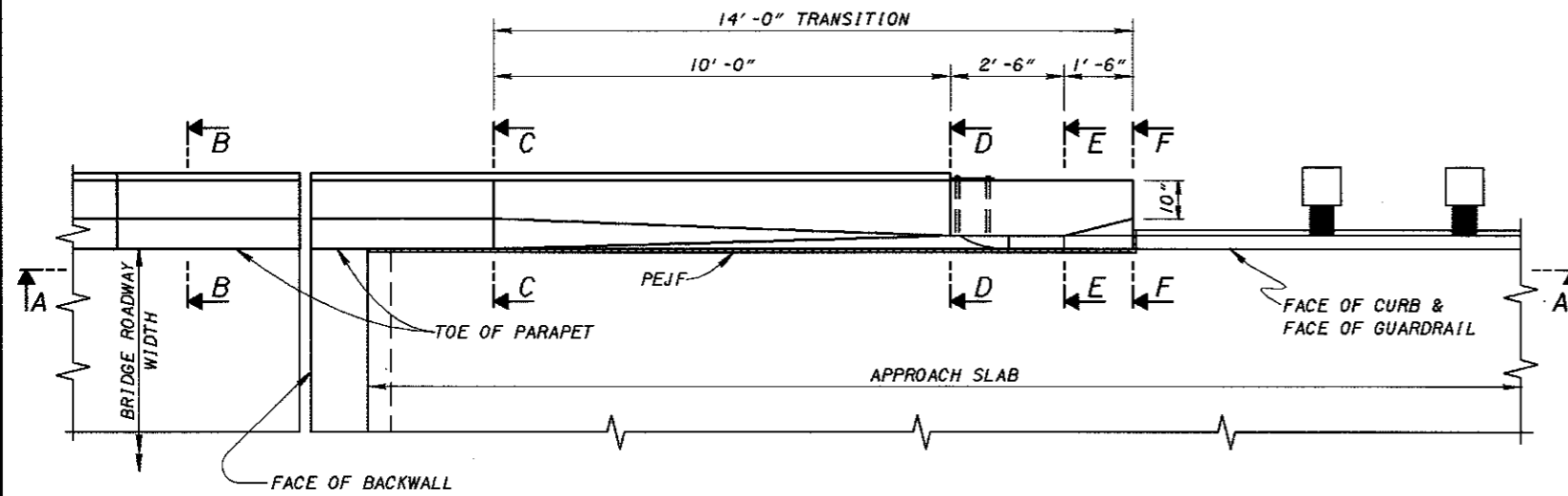
THE USE OF AN EDGE GUIDE, FENCE, OR JIG IS REQUIRED TO ENSURE THAT THE CUT JOINT IS STRAIGHT, TRUE, AND ALIGNED ON ALL FACES OF THE PARAPET. THE JOINT WIDTH SHALL BE THE WIDTH OF THE SAW BLADE, A NOMINAL WIDTH OF 1/4 INCH.

THE PERIMETER OF THE DEFLECTION CONTROL JOINT SHALL BE SEALED WITH A CAULKING MATERIAL TO A MINIMUM DEPTH OF ONE INCH CONFORMING TO FEDERAL SPECIFICATION TT-S-00227E. THE BOTTOM ONE-HALF INCH OF THE OUTSIDE FACE OF THE PARAPET SHOULD BE LEFT UNSEALED TO ALLOW ANY WATER WHICH MAY ENTER THE JOINT TO ESCAPE.

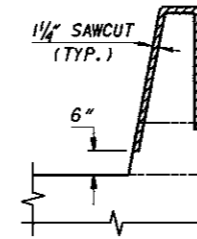
SAWCUTS SHALL BE PLACED AT A MINIMUM OF 6'-0" AND A MAXIMUM OF 10'-0" ON CENTER.

QUANTITIES OF CONCRETE, REINFORCING STEEL, DEFLECTION JOINT SAWCUT AND CAULKING MATERIAL FOR PARAPET ARE INCLUDED WITH APPROPRIATE ITEM UNDER EITHER ABUTMENTS OR SUPERSTRUCTURE FOR PAYMENTS.

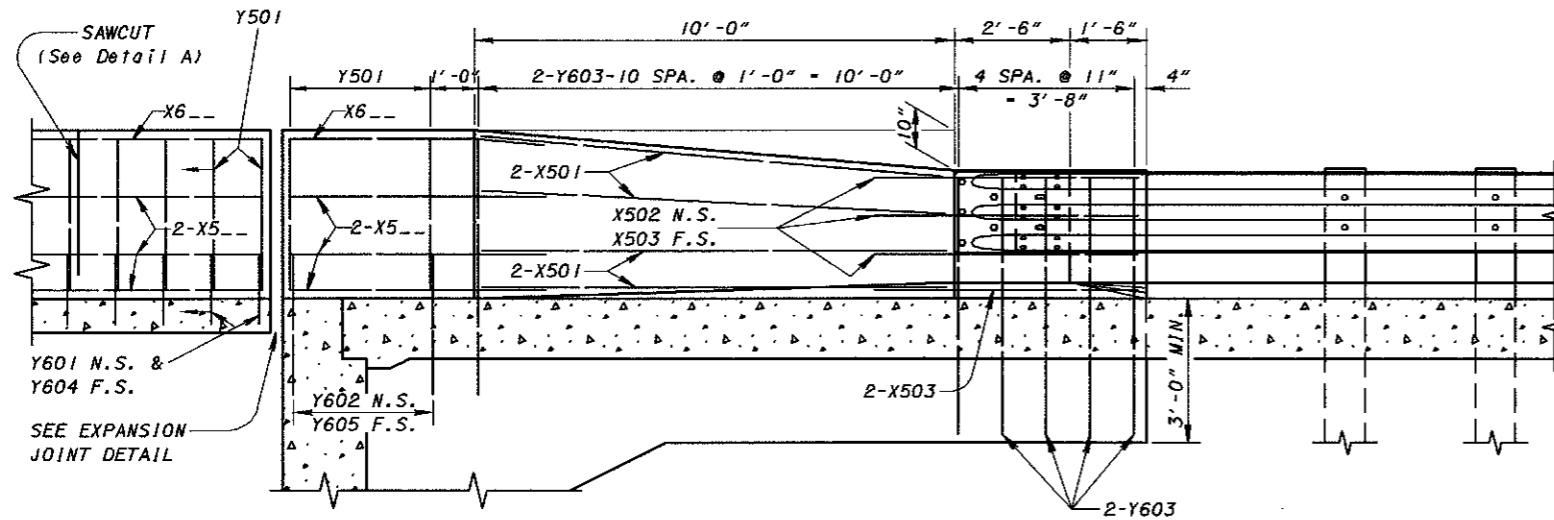
FOR BRIDGE TERMINAL ASSEMBLY SEE STANDARD CONSTRUCTION DRAWING GR-3.1 AND GR-3.2.



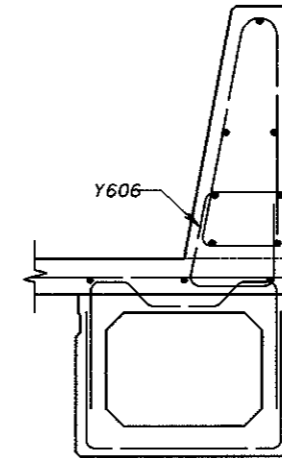
PART PLAN AT ABUTMENT



DETAIL A
(Section through sawcut)
Sawcut Perimeter = 7'-6"



SECTION A-A



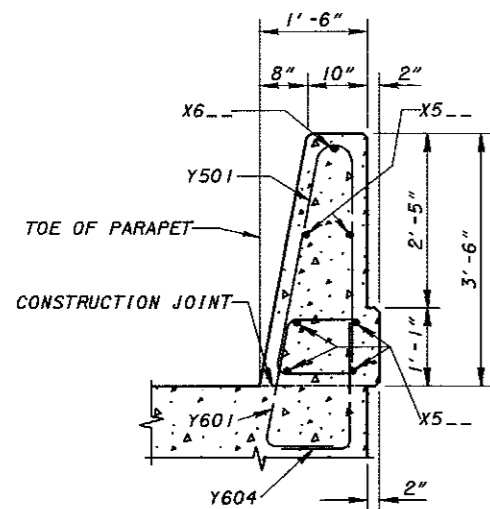
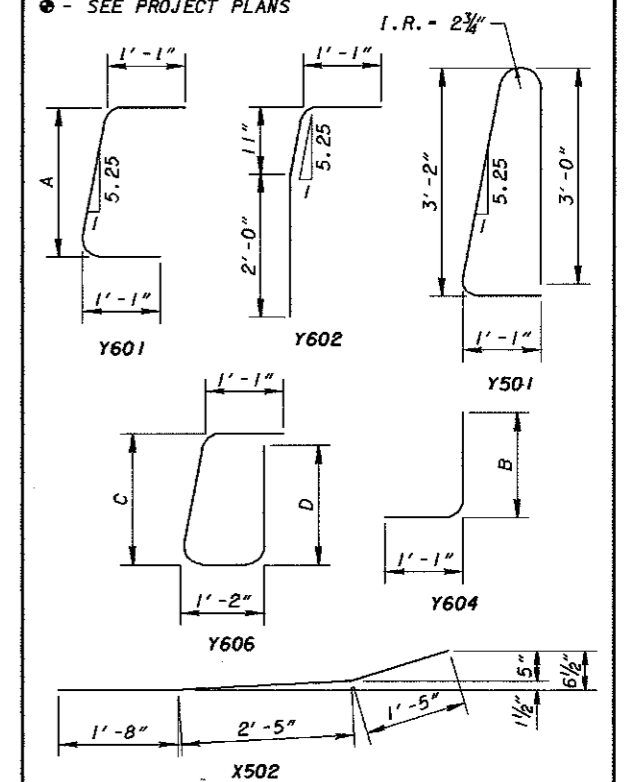
BOX BEAM REINFORCING DETAIL
(Composite Deck)

VERTICAL BARS SHALL BE SPACED AT 1'-0" MAXIMUM.
(See Project Plans)

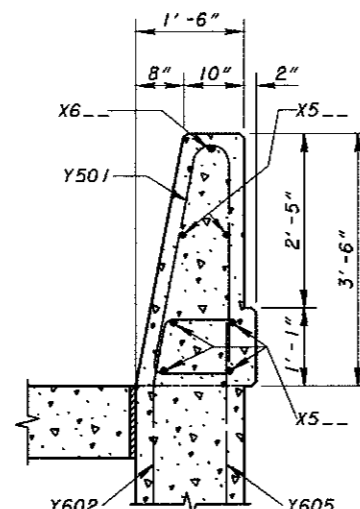
Volume of 14'-0" transition section is 1.89 yd³

REINFORCING BAR LIST					
MARK	LENGTH	SHP.	MARK	LENGTH	SHP.
X501	10'-0"	STR.	Y501	7'-5"	BT.
X502	5'-6"	BT.	Y601	A*2'-0"	BT.
X503	5'-6"	STR.	Y602	3'-11"	BT.
X5--		STR.	Y603	5'-4"	STR.
X6--		STR.	Y604	B*11"	BT.
			Y605	2'-11"	STR.
			Y606	C*D*2'-0"	BT.

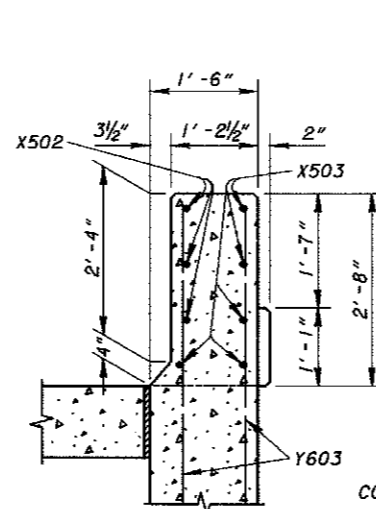
* - SEE PROJECT PLANS



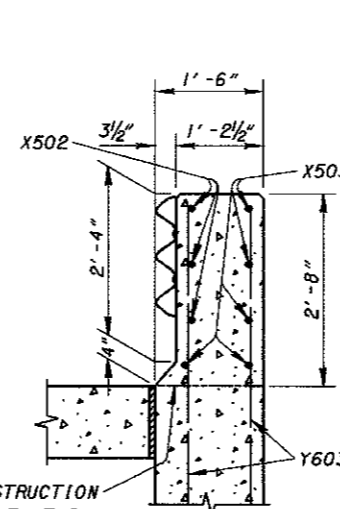
SECTION B-B
(except box beam)
Area = 4.26 ft²



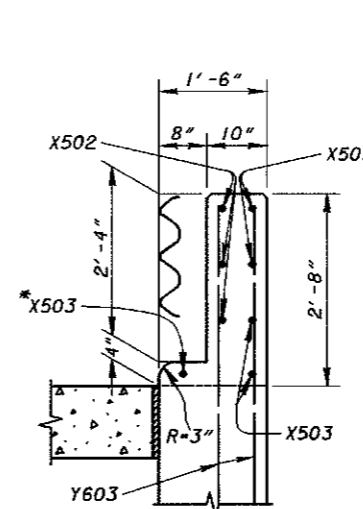
SECTION C-C



SECTION D-D



SECTION E-E



SECTION F-F

* FIELD BEND IF NECESSARY

DESIGN AGENCY
OFFICE OF
STRUCTURAL ENGINEERING

STATE OF OHIO DEPARTMENT OF TRANSPORTATION
01-12-99
DATE
Brad Fogell
ADMINISTRATOR

REVISIONS
DESIGNED
RZ/SAM
DRAWN
RZ/SAM
CHECKED
J.S.
REVIEWED
WTL
SBR-1-99

STANDARD
BRIDGE RAILING
BRIDGE FACE DEFLECTOR PARAPET TYPE
42"