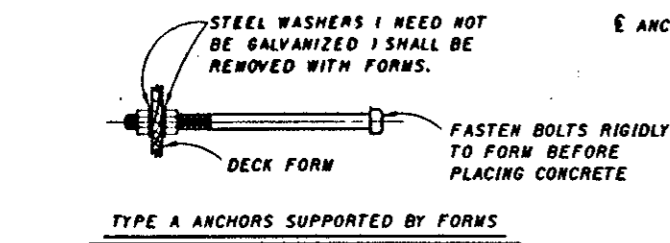
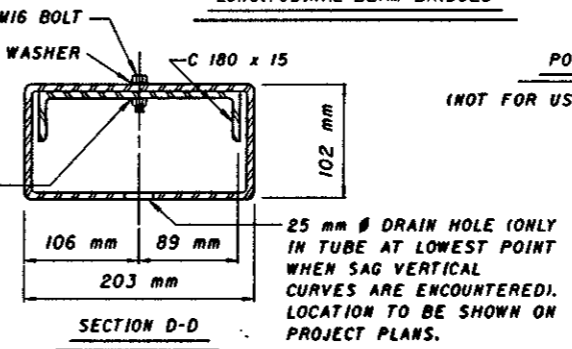
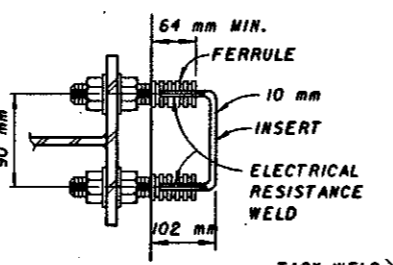
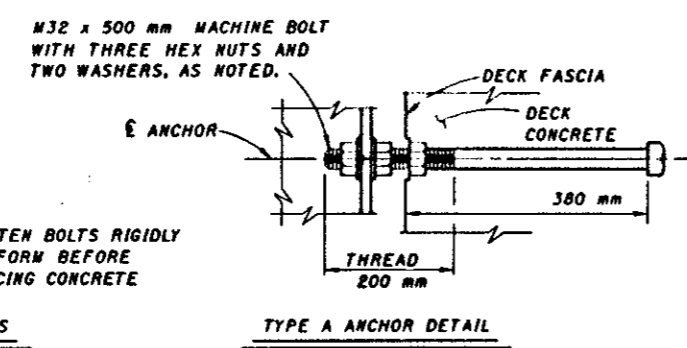
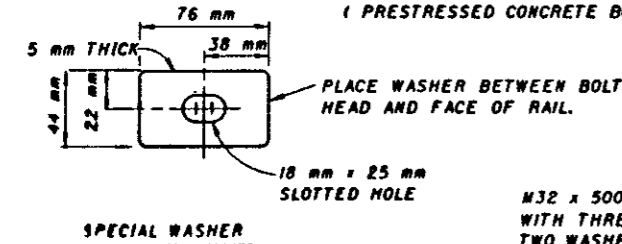
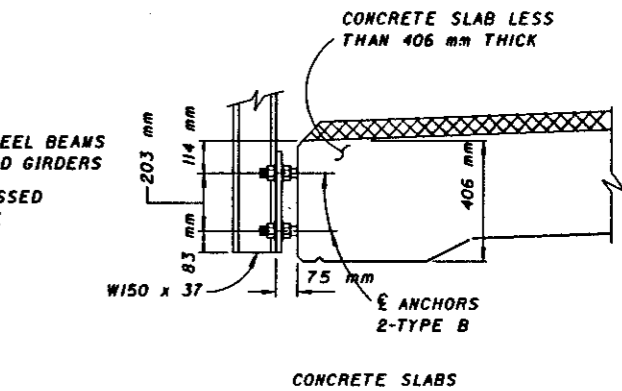
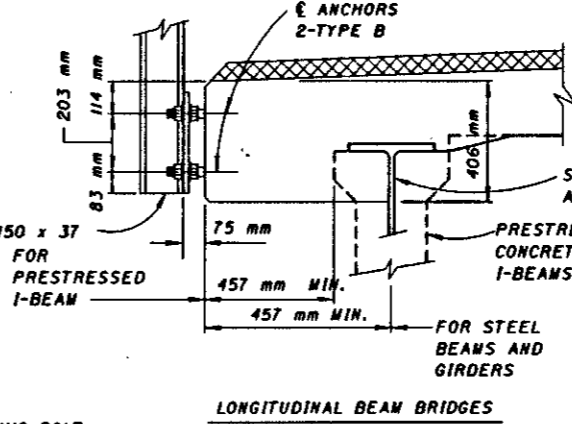
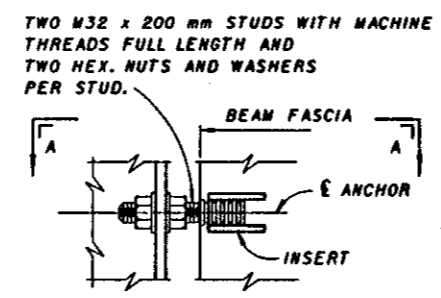
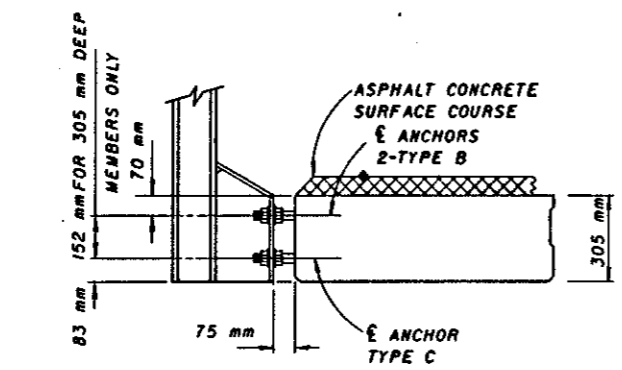
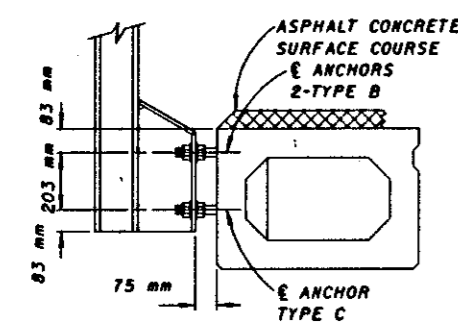


DIMENSION ① IS 152 mm OR 203 mm DEPENDING ON BOX BEAM DEPTH. SEE PROJECT PLANS AND POST ANCHORAGE DETAILS, PRESTRESSED CONCRETE BOX BEAMS. FOR DIMENSION ② SEE PROJECT PLANS. (FOR USE WITH PRESTRESSED CONCRETE BOX BEAMS)

ACSC INDICATES ASPHALT CONCRETE SURFACE COURSE. MWS INDICATES MONOLITHIC WEARING SURFACE.



TYPE A ANCHORS SHOULD ONLY BE USED ON PROJECTS WHERE THE ORIGINAL ANCHORS WERE TYPE A AND ALL ANCHORS ON ANY SINGLE STRUCTURE ARE NOT BEING REMOVED OR REPLACED

W32 x 200 mm STUD WITH MACHINE THREADS FULL LENGTH AND TWO HEX. NUTS AND WASHERS PER STUD.

W32 x 500 mm MACHINE BOLT WITH THREE HEX NUTS AND TWO WASHERS, AS NOTED.

W32 x 200 mm STUD WITH MACHINE THREADS FULL LENGTH AND TWO HEX. NUTS AND WASHERS PER STUD.

W32 x 305 mm MIN. MACHINE BOLT THREADED LENGTH 75 mm MIN.

MATERIAL: ALL NUTS SHALL CONFORM TO THE PHYSICAL PROPERTIES OF ASTM-A325M. THE CHEMICAL PROPERTIES ARE WAIVED FOR ALL BOLTS, ANCHOR BOLTS, NUTS AND STUDS.

M16 BOLTS SHALL BE ASTM-A325M. W32 ANCHOR BOLTS AND STUDS SHALL CONFORM TO THE FOLLOWING PHYSICAL PROPERTIES:

- A) ELONGATION SHALL BE 10%
- B) THREAD PITCH IS 3.6mm
- C) STRESS AREA IS 643mm²
- D) PROOF LOAD LENGTH MEASUREMENT METHOD IS 385kN
- E) PROOF LOAD YIELD STRENGTH METHOD IS 424kN
- F) MINIMUM TENSILE STRENGTH IS 534kN
- G) PRODUCT HARDNESS IS ROCKWELL C23 MINIMUM AND C34 MAXIMUM.

STEEL TUBING SHALL BE AS PER ITEM 707.10. ALL GUARDRAIL POSTS SHALL BE ASTM A36M.

GALVANIZING: ALL GUARDRAIL POSTS, TUBES, HARDWARE AND ACCESSORIES SHALL BE GALVANIZED IN ACCORDANCE WITH ASTM A123 OR ASTM A153, EXCEPT AS OTHERWISE NOTED.

TYPE C ANCHOR INSERTS OF A DIFFERENT TYPE MAY BE PROVIDED IF APPROVED BY THE DIRECTOR.