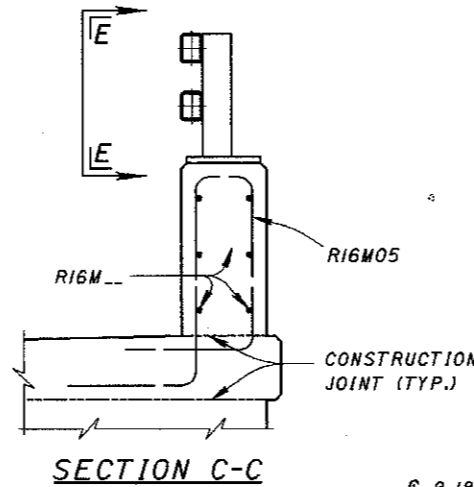
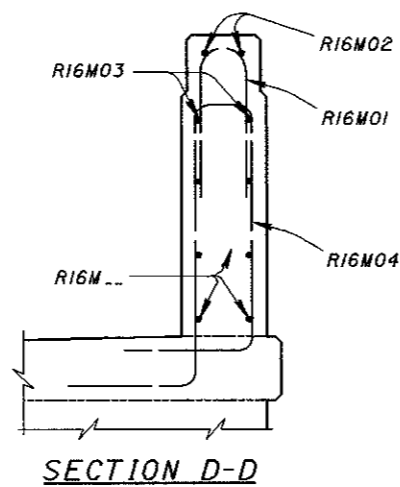
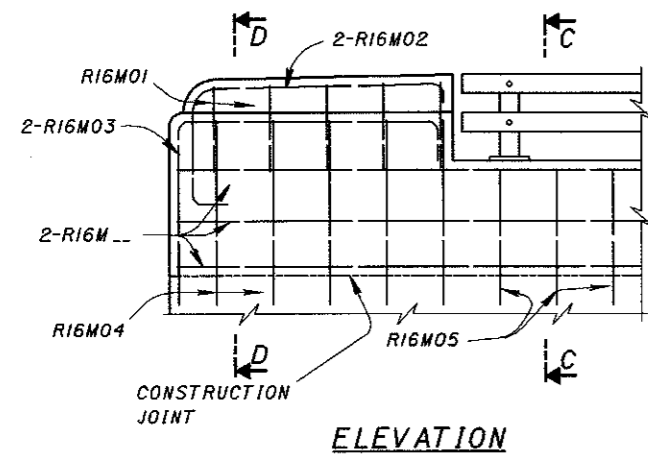
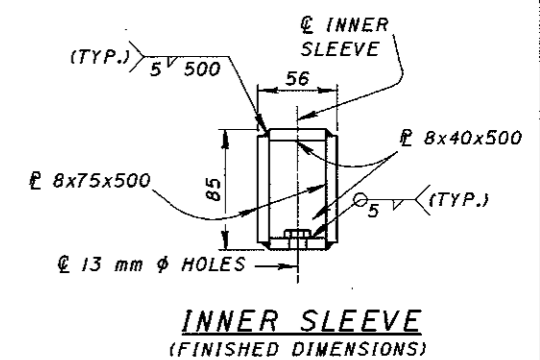
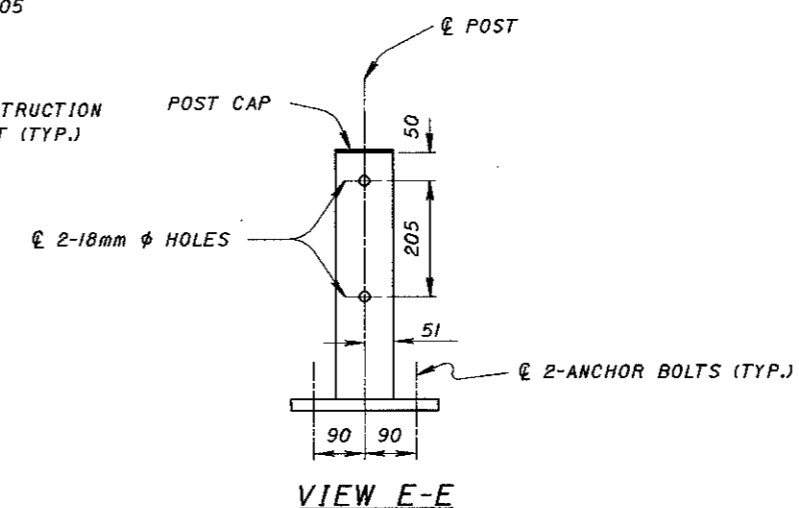


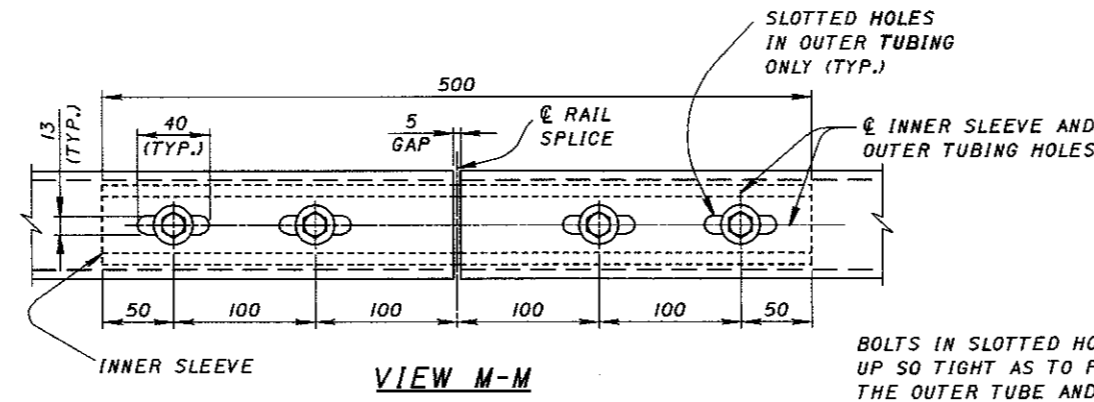
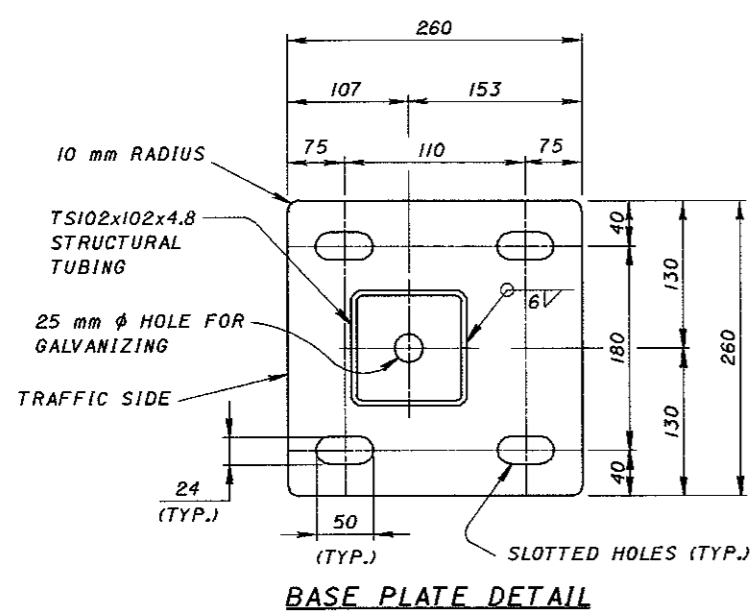
**BRIDGE SIDEWALK RAILING WITH NO APPROACH RAILING**



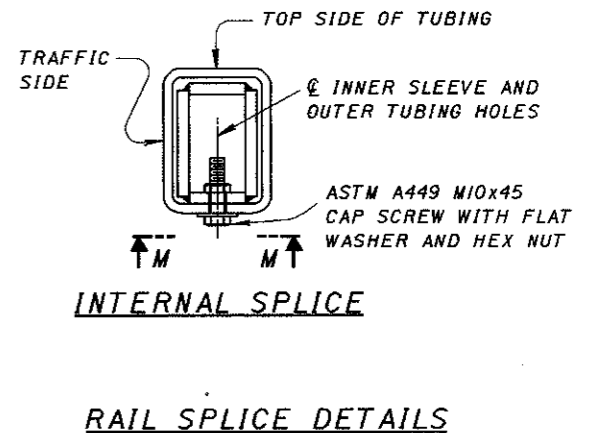
NOTE: THE HORIZONTAL RAILING ELEMENTS SHALL BE PLACED FLUSH WITH THE FACE OF THE PARAPET WALL.



VERTICAL BARS SHALL BE SPACED AT 300 mm MAXIMUM. (see project plans)



VIEW E-E (tube rail not shown for clarity) (SEE SHEET 2/3 FOR POST CAP DETAILS)



BOLTS IN SLOTTED HOLES SHALL NOT BE DRAWN UP SO TIGHT AS TO PREVENT SLIDING BETWEEN THE OUTER TUBE AND THE INNER SLEEVE.

DESIGN AGENCY	OFFICE OF	STRUCTURAL ENGINEERING
STATE OF OHIO DEPARTMENT OF TRANSPORTATION	12-29-98	DATE
BRAD FOGGELL	ADMINISTRATOR	
REVIEWED	WTL	
CHECKED	SDS	BR-2-98M
DESIGNED	JS	DRAWN
	JS/RZ	
STANDARD SIDEWALK RAILING WITH CONCRETE PARAPETS		
		1/3