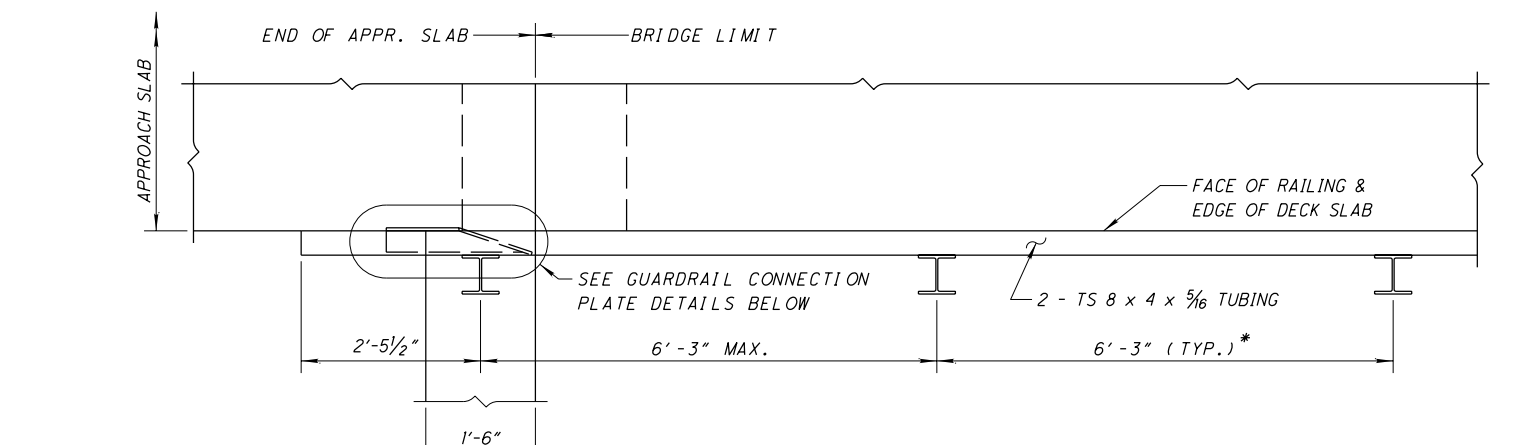
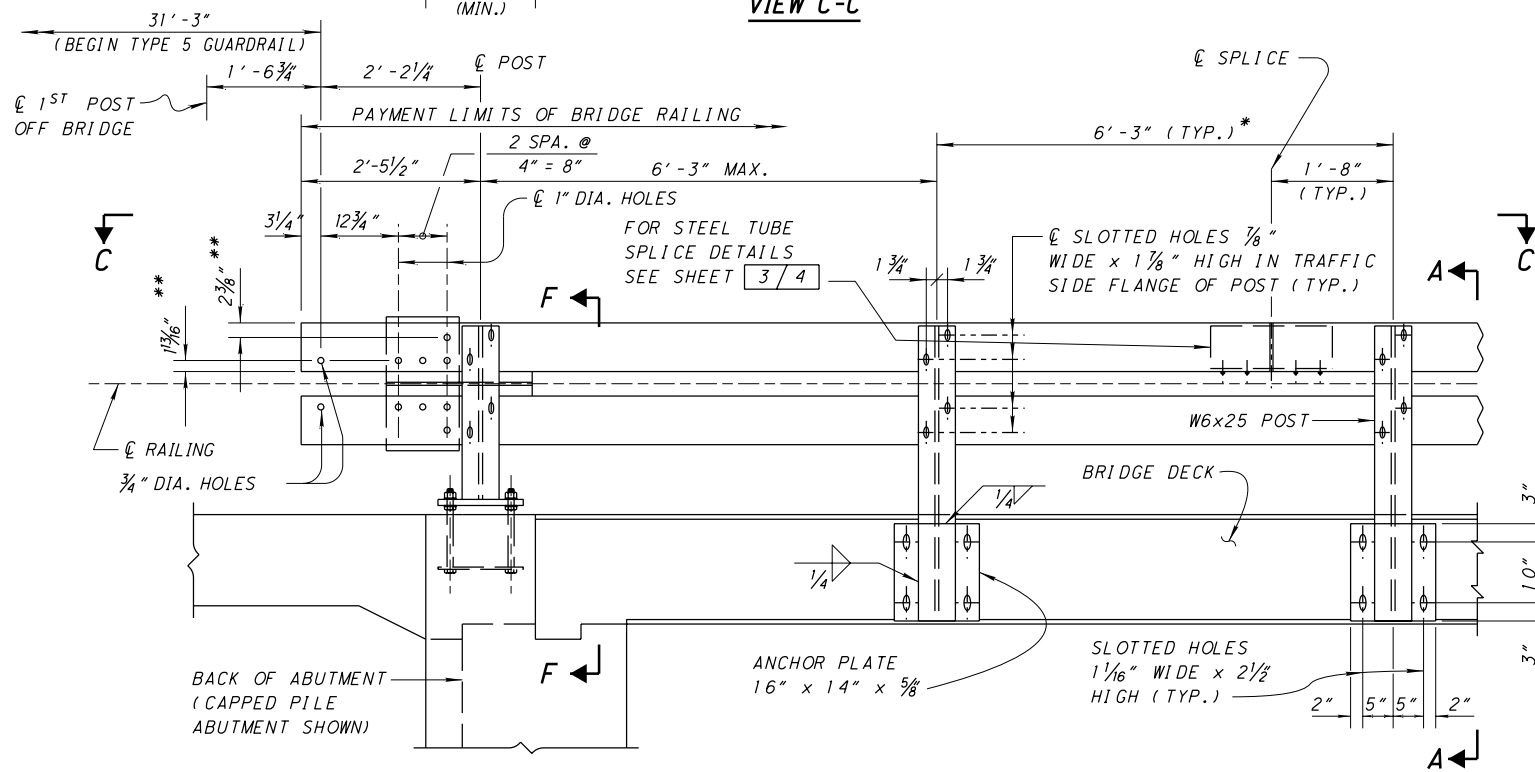


REVIEWED	WTL
CHECKED	JS
DESIGNED	AJM/SAM
DRAWN	SAM

REVISIONS	04-18-08	04-18-03
10-20-00	07-19-02	10-17-03



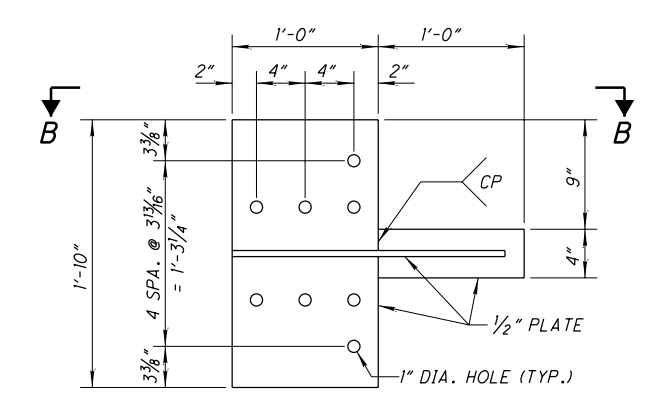
VIEW C-C



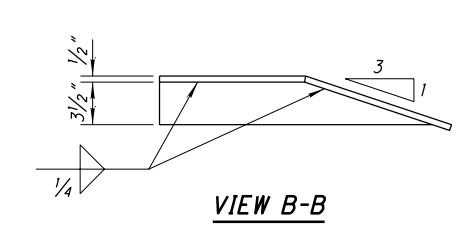
RAILING ELEVATION ON CONCRETE SLAB

BRIDGE TERMINAL ASSEMBLY NOT SHOWN. REFER TO STANDARD CONSTRUCTION DRAWING GR-3.6 FOR DETAILS.

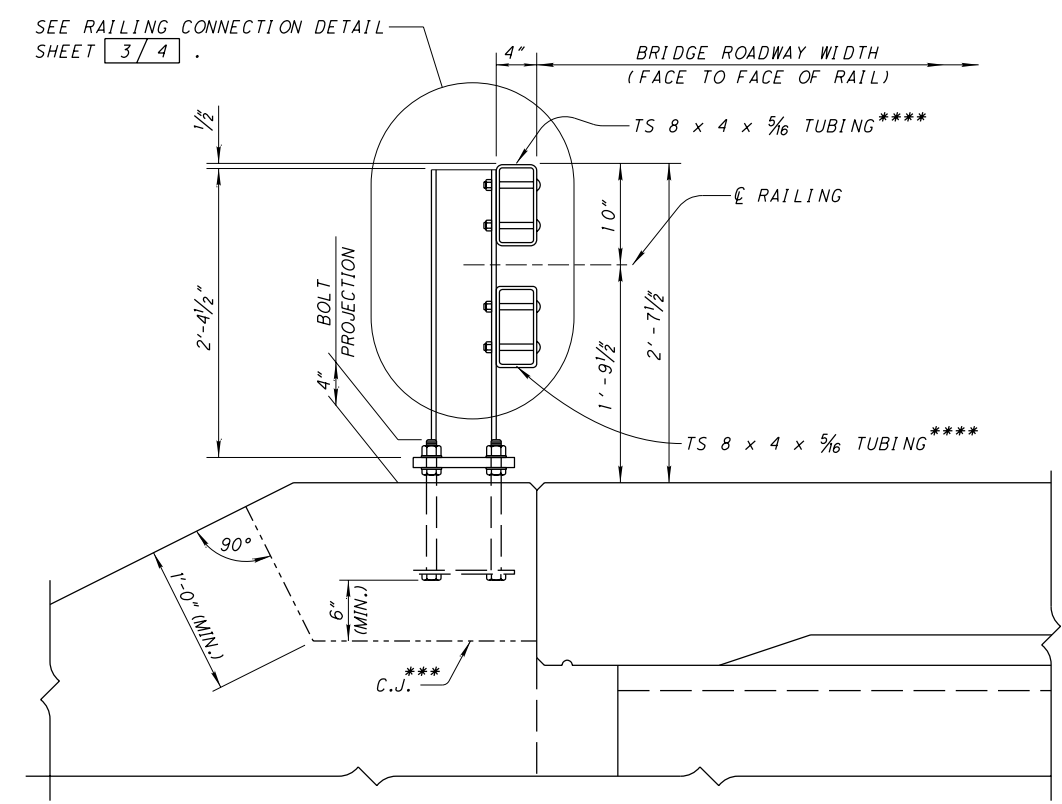
- * - ON EACH SIDE OF THE BRIDGE, ONE POST SPACING PER SPAN MAY BE DECREASED TO ACCOUNT FOR ANY REQUIRED CONSTRUCTION CLEARANCES. NO POST SPACING SHALL EXCEED 6'-3".
- ** - SYMMETRICAL ABOUT \bar{C} RAILING



GUARDRAIL CONNECTION PLATE DETAILS

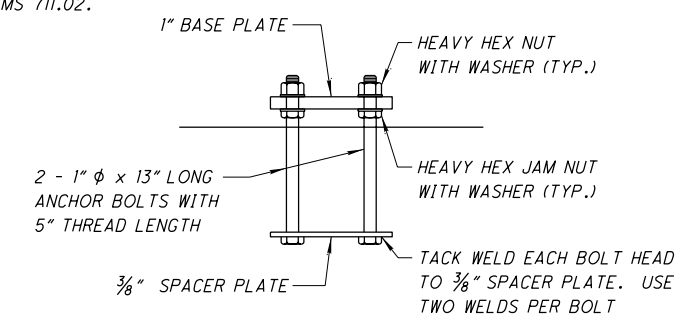


VIEW B-B



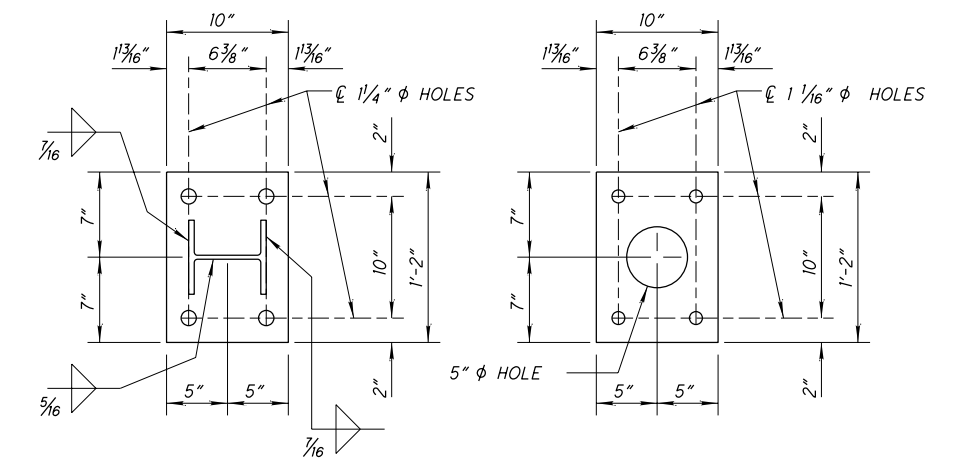
SECTION F-F

- *** - PLACE THE CONCRETE ABOVE THE CONSTRUCTION JOINT AFTER INSTALLATION OF THE RAILING IS COMPLETE.
- **** - IN LIEU OF PROVIDING THE WINGWALL CONSTRUCTION JOINT, THE CONTRACTOR MAY FIELD DRILL HOLES IN THE TUBING FOR POST-TO-TUBE RAIL CONNECTIONS AT ALL FLUSH MOUNTED POST LOCATIONS. REPAIR GALVANIZING ACCORDING TO C&MS 711.02.



FLUSH MOUNTED POST ANCHOR DETAIL

(POST NOT SHOWN)



BASE PLATE
(1" PLATE)

SPACER PLATE
(3/8" PLATE)