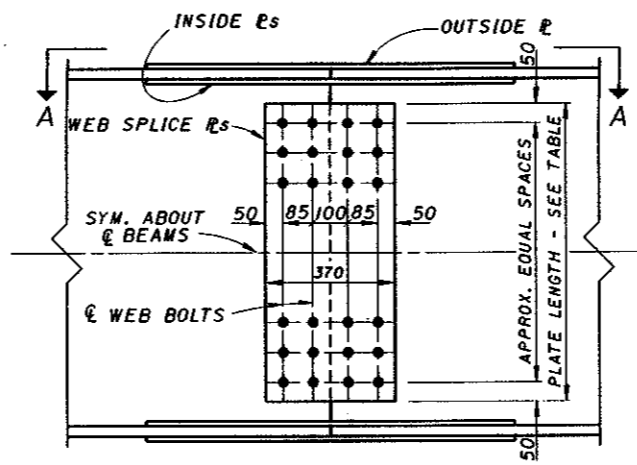
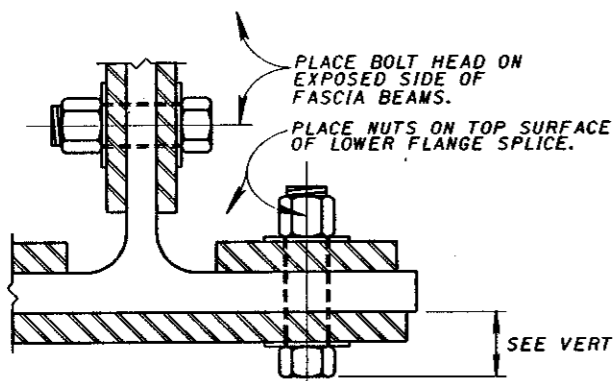


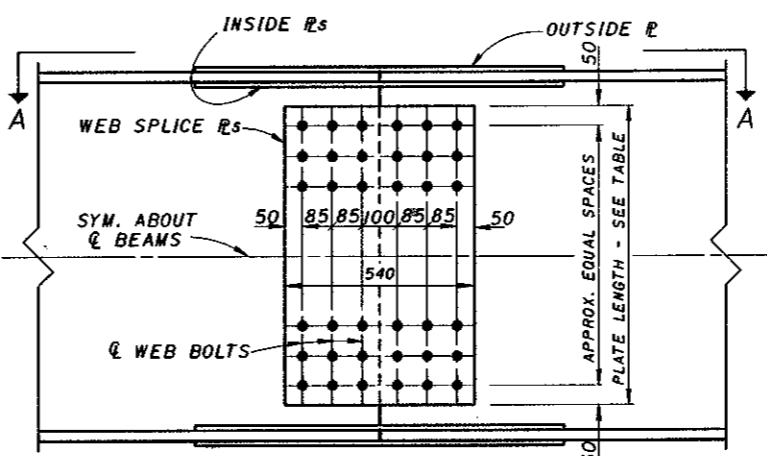
BEAM SPLICE DETAILS

BEAM	TYPE	FLANGE PLATES		FLANGE BOLTS			WEB SPLICE		WT. OF SPLICE MAT'RL kg #				
		OUTSIDE 2 REQ'D	Inside 4 REQ'D	NUM.	N SPA.	PITCH	A	B		C	TYPE	WEB PLATES 2 REQ'D	WEB BOLTS NO.
W1000X399	B	440X16X1390	180X16X1390	64	7	85	55	80	180	B	820X16X540	54	460
W1000X371	B	390X16X1390	150X16X1390	64	7	85	60	50	160	B	820X16X540	54	425
W1000X363	B	440X14X1390	180X14X1390	64	7	85	55	80	180	B	820X16X540	54	425
W1000X328	B	440X12X1050	180X12X1050	48	5	85	55	80	180	B	820X16X540	54	330
W1000X321	B	390X14X1050	150X14X1050	48	5	85	60	50	160	B	820X14X540	54	320
W1000X296	B	390X14X1050	150X14X1050	48	5	85	60	50	160	B	820X14X540	54	320
W1000X286	B	440X10X1050	180X10X1050	48	5	85	55	80	180	B	820X16X540	54	305
W1000X272	A	290X16X710	100X16X710	32	3	85	60	-	180	B	820X16X540	54	235
W1000X249	A	290X14X710	100X14X710	32	3	85	60	-	180	B	820X14X540	54	225
W1000X222	A	290X12X540	100X12X540	24	2	85	60	-	180	B	820X14X540	54	195
W920X446	B	410X20X1390	160X20X1390	64	7	85	60	60	183	C	780X22X710	72	595
W920X417	B	410X18X1390	160X18X1390	64	7	85	60	60	182	B	780X18X540	54	475
W920X387	B	410X16X1390	160X16X1390	64	7	85	60	60	180	B	780X18X540	54	445
W920X365	B	410X16X1390	160X16X1390	64	7	85	60	60	179	B	780X18X540	54	445
W920X342	B	410X14X1050	160X14X1050	48	5	85	60	60	178	B	780X16X540	54	335
W920X313	A	300X16X880	110X16X880	40	4	85	60	-	189	B	780X18X540	54	290
W920X289	A	300X16X880	110X16X880	40	4	85	60	-	188	B	780X16X540	54	280
W920X271	A	300X14X710	110X14X710	32	3	85	60	-	187	B	780X16X540	54	240
W920X253	A	300X14X710	110X14X710	32	3	85	60	-	186	B	780X16X540	54	240
W920X238	A	300X12X710	110X12X710	32	3	85	60	-	185	B	780X14X540	54	215
W920X223	A	300X12X710	110X12X710	32	3	85	60	-	184	A	780X12X370	36	165
W920X201	A	300X10X540	110X10X540	24	2	85	60	-	184	A	780X12X370	36	135
W840X392	B	390X18X1390	160X18X1390	64	7	85	60	60	161	C	730X20X710	64	520
W840X359	B	390X16X1390	160X16X1390	64	7	85	60	60	163	B	730X18X540	48	425
W840X329	B	390X14X1050	160X14X1050	48	5	85	60	60	161	B	730X16X540	48	320
W840X299	B	390X14X1050	160X14X1050	48	5	85	60	60	160	B	730X16X540	48	320
W840X226	A	285X12X710	110X12X710	32	3	85	60	-	174	A	730X14X540	48	205
W840X210	A	285X12X540	110X12X540	24	2	85	60	-	173	A	730X12X370	32	135
W840X193	A	285X10X540	110X10X540	24	2	85	60	-	172	A	730X12X370	32	130
W840X176	A	285X10X540	110X10X540	24	2	85	60	-	172	A	730X12X370	32	130
W760X314	B	370X14X1050	155X14X1050	48	5	85	55	55	164	B	640X18X540	42	310
W760X284	B	370X14X1050	155X14X1050	48	5	85	55	55	162	B	640X16X540	42	300
W760X257	B	370X12X1050	155X12X1050	48	5	85	55	55	161	B	640X16X540	42	275
W760X196	A	255X12X540	100X12X540	24	2	85	55	-	158	B	640X14X540	42	160
W760X185	A	255X12X540	100X12X540	24	2	85	55	-	157	B	640X14X540	42	160
W760X173	A	255X10X540	100X10X540	24	2	85	55	-	157	A	640X12X370	28	115
W760X161	A	255X10X540	100X10X540	24	2	85	55	-	156	A	640X12X370	28	115
W760X147	A	255X8X540	100X8X540	24	2	85	55	-	155	A	640X12X370	28	105
W760X134	A	255X8X540	100X8X540	24	2	85	55	-	154	A	640X10X370	28	100
W690X289	A	345X16X880	145X16X880	40	4	85	75	-	206	C	550X22X710	48	330
W690X265	A	345X14X880	145X14X880	40	4	85	75	-	208	C	550X22X710	48	310
W690X240	A	345X12X880	145X12X880	40	4	85	75	-	206	B	550X18X540	36	235
W690X217	A	345X12X710	145X12X710	32	3	85	75	-	205	B	550X16X540	36	200
W690X170	A	245X12X540	95X12X540	24	2	85	55	-	146	B	550X16X540	36	155
W690X152	A	245X10X540	95X10X540	24	2	85	55	-	144	A	550X12X370	24	105
W690X140	A	245X10X540	95X10X540	24	2	85	55	-	144	A	550X12X370	24	105
W690X125	A	245X8X540	95X8X540	24	2	85	55	-	143	A	550X12X370	24	95
W610X241	A	315X14X880	125X14X880	40	4	85	65	-	199	B	525X16X540	36	225
W610X217	A	315X12X710	125X12X710	32	3	85	65	-	198	B	525X16X540	36	190
W610X195	A	315X12X710	125X12X710	32	3	85	65	-	197	B	525X16X540	36	190
W610X174	A	315X10X540	125X10X540	24	2	85	65	-	195	A	525X12X370	24	115
W610X155	A	315X10X540	125X10X540	24	2	85	65	-	194	A	525X12X370	24	115

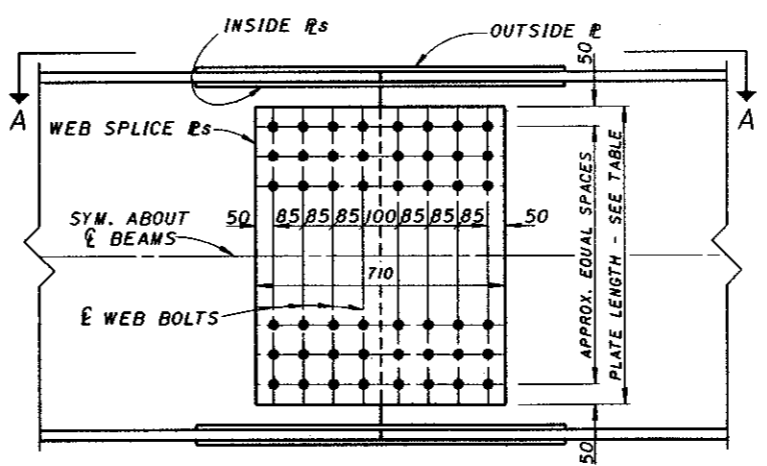
\* TABULATED WEIGHTS ARE APPROXIMATE AND ARE FOR ESTIMATING PURPOSES ONLY. THEY INCLUDE AN ALLOWANCE FOR WEIGHT OF BOLTS AND WASHERS.



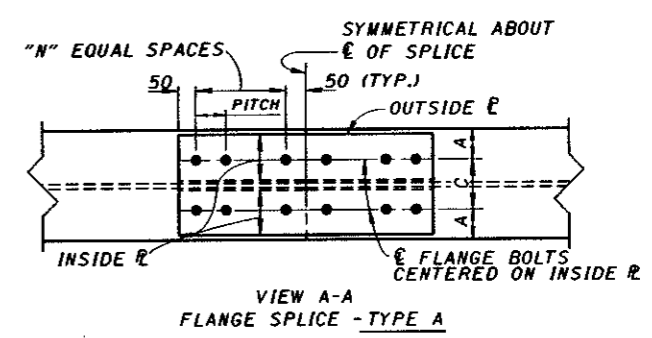
BEAM SPLICE DETAIL WEB SPLICE - TYPE A



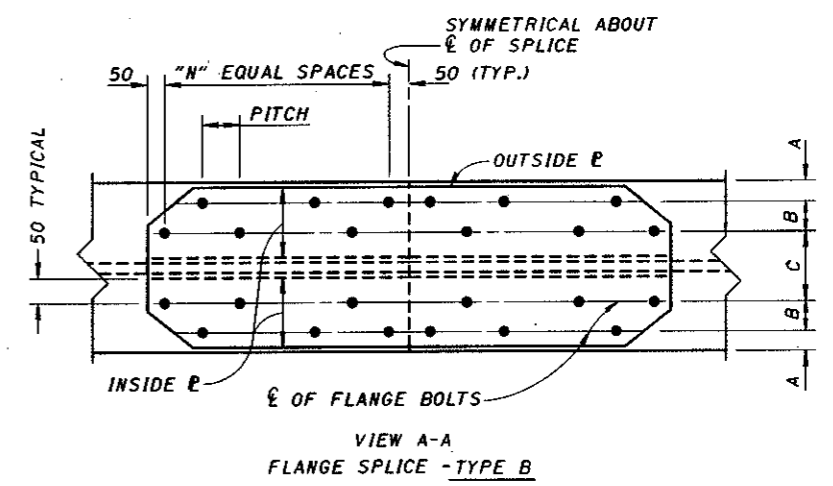
BEAM SPLICE DETAIL WEB SPLICE - TYPE B



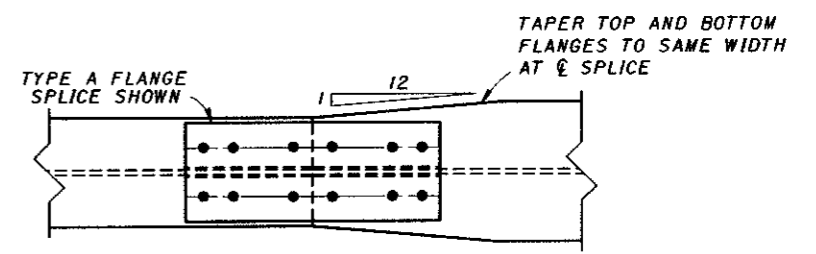
BEAM SPLICE DETAIL WEB SPLICE - TYPE C



VIEW A-A FLANGE SPLICE - TYPE A



VIEW A-A FLANGE SPLICE - TYPE B



VIEW A-A SPLICE DETAIL FOR BEAMS HAVING DIFFERENT FLANGE WIDTHS

NOTE: ALL SHAPES AND PLATES SHALL BE DESIGNATED (CVN), AND SHALL MEET SPECIFIED MINIMUM NOTCH TOUGHNESS REQUIREMENTS AS SPECIFIED IN 711.01 OF CMS.  
NOTE: ALL FASTENERS ARE 27 mm DIAMETER HIGH STRENGTH BOLTS, ASTM A-325M.