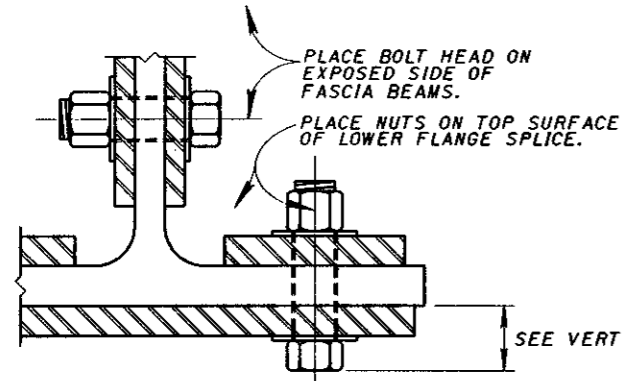


BEAM SPLICE DETAILS

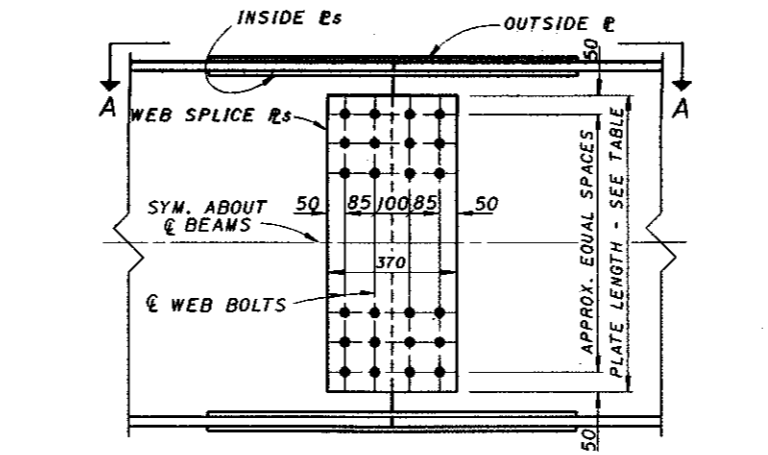
| BEAM | TYPE | FLANGE PLATES | | FLANGE BOLTS | | | WEB SPLICE | | WT. OF SPLICE MAT'L RL kg # | | | | |
|-----------|------|--------------------|-------------------|--------------|--------|-------|------------|----|--------------------------------|---|------------|-----------------------|------------------|
| | | OUTSIDE 2 REQ'D | Inside 4 REQ'D | NUM. | N SPA. | PITCH | A | B | | C | TYPE | WEB PLATES 2 REQ'D | WEB BOLTS NO. |
| W1000X399 | B | 440X16X1730 | 180X16X1730 | 80 | 9 | 85 | 55 | 80 | 180 | C | 820X18X740 | 72 | 610 |
| W1000X371 | B | 390X16X1730 | 150X16X1730 | 80 | 9 | 85 | 60 | 50 | 160 | C | 820X18X740 | 72 | 565 |
| W1000X363 | B | 440X14X1730 | 180X14X1730 | 80 | 9 | 85 | 55 | 80 | 180 | C | 820X18X740 | 72 | 570 |
| W1000X328 | B | 440X12X1390 | 180X12X1390 | 64 | 7 | 85 | 55 | 80 | 180 | C | 820X18X740 | 72 | 465 |
| W1000X321 | B | 390X14X1390 | 150X14X1390 | 64 | 7 | 85 | 60 | 50 | 160 | C | 820X16X740 | 72 | 445 |
| W1000X296 | B | 390X14X1390 | 150X14X1390 | 64 | 7 | 85 | 60 | 50 | 160 | C | 820X16X740 | 72 | 445 |
| W1000X286 | B | 440X10X1050 | 180X10X1050 | 48 | 5 | 85 | 55 | 80 | 180 | C | 820X18X740 | 72 | 375 |
| W1000X272 | A | 290X16X1050 | 100X16X1050 | 48 | 5 | 85 | 60 | - | 180 | C | 820X16X740 | 72 | 355 |
| W1000X249 | A | 290X14X880 | 100X14X880 | 40 | 4 | 85 | 60 | - | 180 | C | 820X16X740 | 72 | 315 |
| W1000X222 | A | 290X12X710 | 100X12X710 | 32 | 3 | 85 | 60 | - | 180 | C | 820X16X740 | 72 | 280 |
| W920X446 | B | 410X20X2070 | 160X20X2070 | 96 | 11 | 85 | 60 | 60 | 183 | C | 780X22X710 | 72 | 770 |
| W920X417 | B | 410X18X1730 | 160X18X1730 | 80 | 9 | 85 | 60 | 60 | 182 | C | 780X20X710 | 72 | 625 |
| W920X387 | B | 410X16X1730 | 160X16X1730 | 80 | 9 | 85 | 60 | 60 | 180 | C | 780X20X710 | 72 | 585 |
| W920X365 | B | 410X16X1730 | 160X16X1730 | 80 | 9 | 85 | 60 | 60 | 179 | C | 780X18X710 | 72 | 565 |
| W920X342 | B | 410X14X1390 | 160X14X1390 | 64 | 7 | 85 | 60 | 60 | 178 | C | 780X18X710 | 72 | 460 |
| W920X313 | A | 300X16X1220 | 110X16X1220 | 56 | 6 | 85 | 60 | - | 189 | C | 780X20X710 | 72 | 410 |
| W920X289 | A | 300X16X1050 | 110X16X1050 | 48 | 5 | 85 | 60 | - | 188 | C | 780X18X710 | 72 | 365 |
| W920X271 | A | 300X14X1050 | 110X14X1050 | 48 | 5 | 85 | 60 | - | 187 | C | 780X18X710 | 72 | 350 |
| W920X253 | A | 300X14X880 | 110X14X880 | 40 | 4 | 85 | 60 | - | 186 | C | 780X16X710 | 72 | 310 |
| W920X238 | A | 300X12X880 | 110X12X880 | 40 | 4 | 85 | 60 | - | 185 | C | 780X16X710 | 72 | 295 |
| W920X223 | A | 300X12X880 | 110X12X880 | 40 | 4 | 85 | 60 | - | 184 | C | 780X16X710 | 72 | 295 |
| W920X201 | A | 300X10X710 | 110X10X710 | 32 | 3 | 85 | 60 | - | 184 | B | 780X14X540 | 54 | 205 |
| W840X392 | B | 390X18X1730 | 160X18X1730 | 80 | 9 | 85 | 60 | 60 | 161 | C | 730X20X710 | 64 | 595 |
| W840X359 | B | 390X16X1730 | 160X16X1730 | 80 | 9 | 85 | 60 | 60 | 163 | C | 730X20X710 | 64 | 560 |
| W840X329 | B | 390X14X1390 | 160X14X1390 | 64 | 7 | 85 | 60 | 60 | 161 | C | 730X18X710 | 64 | 440 |
| W840X299 | B | 390X14X1390 | 160X14X1390 | 64 | 7 | 85 | 60 | 60 | 160 | C | 730X18X710 | 64 | 440 |
| W840X226 | A | 285X12X880 | 110X12X880 | 40 | 4 | 85 | 60 | - | 174 | C | 730X16X710 | 64 | 275 |
| W840X210 | A | 285X12X880 | 110X12X880 | 40 | 4 | 85 | 60 | - | 173 | C | 730X16X710 | 64 | 275 |
| W840X193 | A | 285X10X710 | 110X10X710 | 32 | 3 | 85 | 60 | - | 172 | B | 730X12X540 | 48 | 180 |
| W840X176 | A | 285X10X710 | 110X10X710 | 32 | 3 | 85 | 60 | - | 172 | B | 730X12X540 | 48 | 180 |
| W760X314 | B | 370X14X1390 | 155X14X1390 | 64 | 7 | 85 | 55 | 55 | 164 | C | 640X20X740 | 56 | 430 |
| W760X284 | B | 370X14X1390 | 155X14X1390 | 64 | 7 | 85 | 55 | 55 | 162 | C | 640X18X740 | 56 | 415 |
| W760X257 | B | 370X12X1390 | 155X12X1390 | 64 | 7 | 85 | 55 | 55 | 161 | C | 640X18X740 | 56 | 385 |
| W760X196 | A | 255X12X710 | 100X12X710 | 32 | 3 | 85 | 55 | - | 158 | C | 640X16X740 | 56 | 235 |
| W760X185 | A | 255X12X710 | 100X12X710 | 32 | 3 | 85 | 55 | - | 157 | C | 640X16X740 | 56 | 235 |
| W760X173 | A | 255X10X710 | 100X10X710 | 32 | 3 | 85 | 55 | - | 157 | C | 640X16X740 | 56 | 225 |
| W760X161 | A | 255X10X540 | 100X10X540 | 24 | 2 | 85 | 55 | - | 156 | B | 640X14X540 | 42 | 155 |
| W760X147 | A | 255X8X540 | 100X8X540 | 24 | 2 | 85 | 55 | - | 155 | B | 640X12X540 | 42 | 135 |
| W760X134 | A | 255X8X540 | 100X8X540 | 24 | 2 | 85 | 55 | - | 154 | B | 640X12X540 | 42 | 135 |
| W690X289 | A | 345X16X1220 | 145X16X1220 | 56 | 6 | 85 | 75 | - | 206 | C | 550X22X740 | 48 | 400 |
| W690X265 | A | 345X14X1220 | 145X14X1220 | 56 | 6 | 85 | 75 | - | 208 | C | 550X22X740 | 48 | 375 |
| W690X240 | A | 345X12X1050 | 145X12X1050 | 48 | 5 | 85 | 75 | - | 206 | C | 550X20X740 | 48 | 310 |
| W690X217 | A | 345X12X1050 | 145X12X1050 | 48 | 5 | 85 | 75 | - | 205 | C | 550X18X740 | 48 | 300 |
| W690X170 | A | 245X12X710 | 95X12X710 | 32 | 3 | 85 | 55 | - | 146 | C | 550X18X740 | 48 | 220 |
| W690X152 | A | 245X10X540 | 95X10X540 | 24 | 2 | 85 | 55 | - | 144 | C | 550X16X740 | 48 | 185 |
| W690X140 | A | 245X10X540 | 95X10X540 | 24 | 2 | 85 | 55 | - | 144 | B | 550X14X540 | 36 | 140 |
| W690X125 | A | 245X8X540 | 95X8X540 | 24 | 2 | 85 | 55 | - | 143 | B | 550X12X540 | 36 | 120 |
| W610X241 | A | 315X14X1050 | 125X14X1050 | 48 | 5 | 85 | 65 | - | 199 | C | 525X20X710 | 48 | 305 |
| W610X217 | A | 315X12X1050 | 125X12X1050 | 48 | 5 | 85 | 65 | - | 198 | C | 525X18X710 | 48 | 275 |
| W610X195 | A | 315X12X880 | 125X12X880 | 40 | 4 | 85 | 65 | - | 197 | C | 525X18X710 | 48 | 250 |
| W610X174 | A | 315X10X710 | 125X10X710 | 32 | 3 | 85 | 65 | - | 195 | B | 525X14X540 | 36 | 165 |
| W610X155 | A | 315X10X710 | 125X10X710 | 32 | 3 | 85 | 65 | - | 194 | B | 525X12X540 | 36 | 160 |

* TABULATED WEIGHTS ARE APPROXIMATE AND ARE FOR ESTIMATING PURPOSES ONLY. THEY INCLUDE AN ALLOWANCE FOR WEIGHT OF BOLTS AND WASHERS.

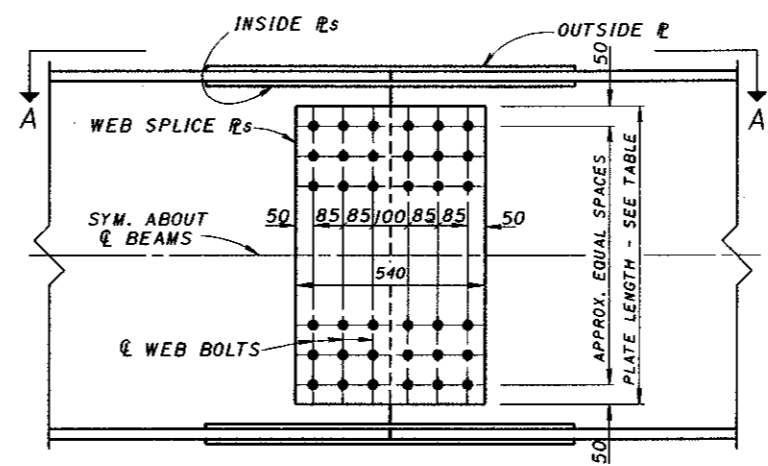


PARTIAL SECTION (AT & OF BEAM SPLICE)

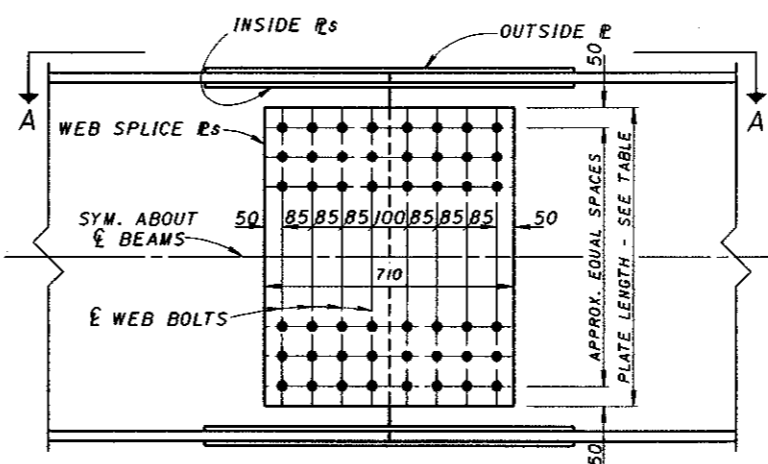
SEE VERTICAL CLEARANCE NOTE



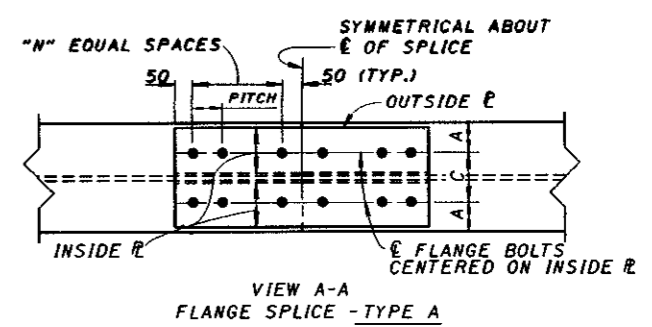
BEAM SPLICE DETAIL WEB SPLICE - TYPE A



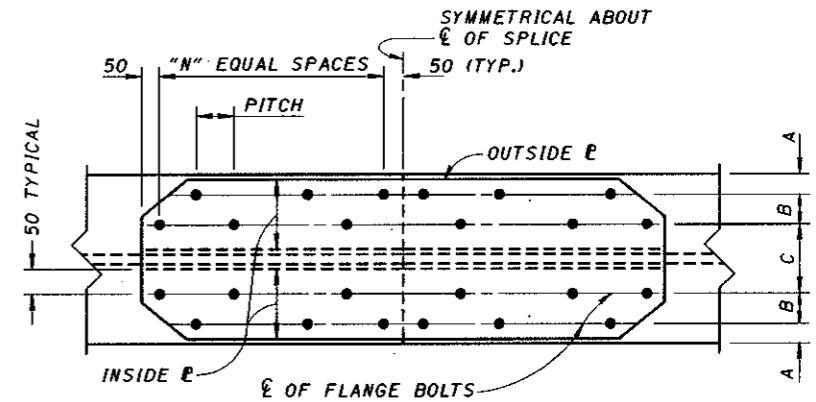
BEAM SPLICE DETAIL WEB SPLICE - TYPE B



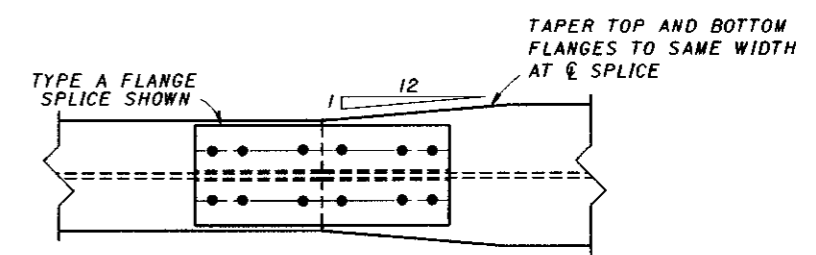
BEAM SPLICE DETAIL WEB SPLICE - TYPE C



VIEW A-A FLANGE SPLICE - TYPE A



VIEW A-A FLANGE SPLICE - TYPE B



VIEW A-A SPLICE DETAIL FOR BEAMS HAVING DIFFERENT FLANGE WIDTHS

NOTE: ALL SHAPES AND PLATES SHALL BE DESIGNATED (CVN), AND SHALL MEET SPECIFIED MINIMUM NOTCH TOUGHNESS REQUIREMENTS AS SPECIFIED IN 711.01 OF CMS.

NOTE: ALL FASTENERS ARE 27 mm DIAMETER HIGH STRENGTH BOLTS, ASTM A-325M.