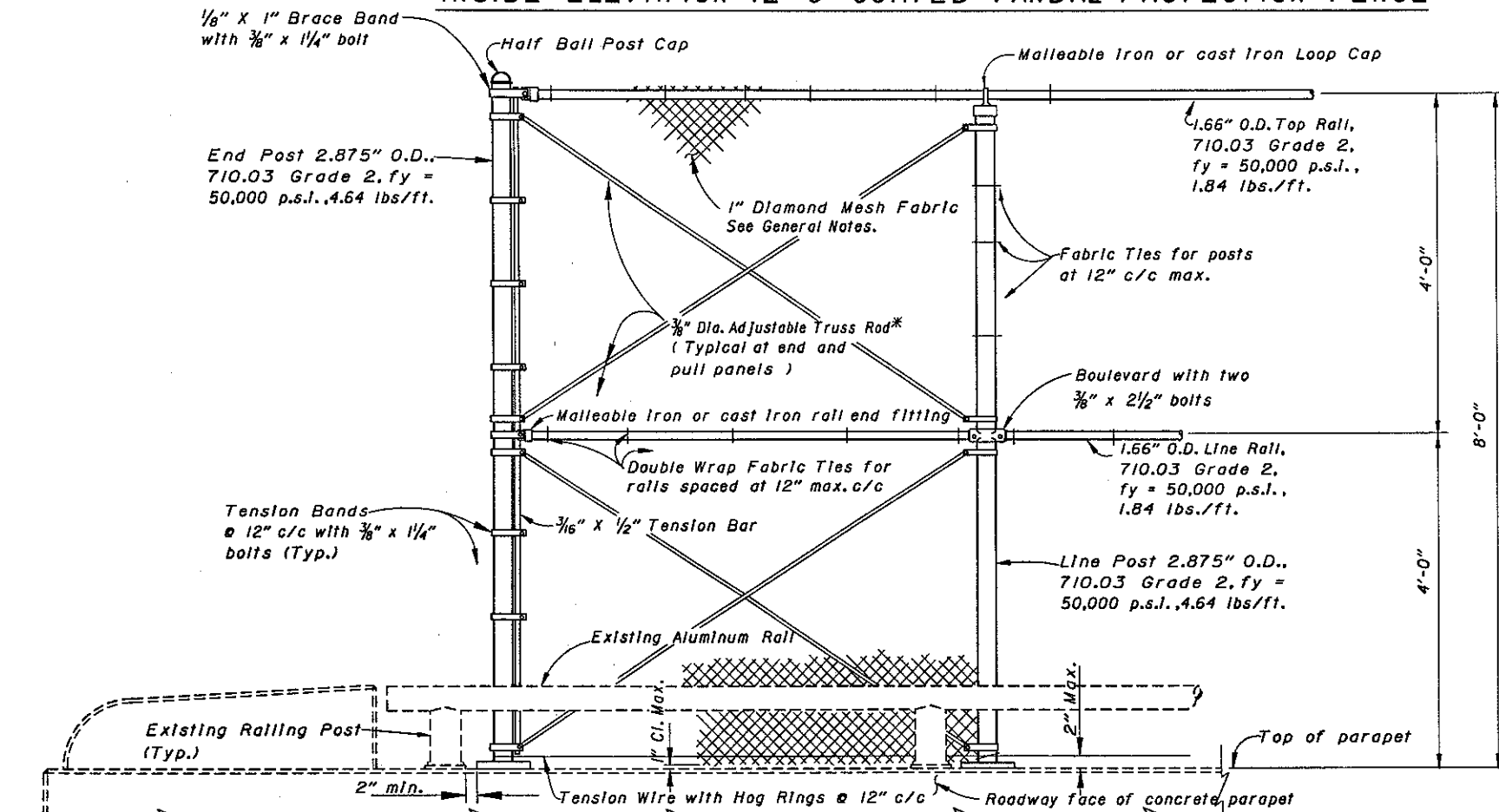
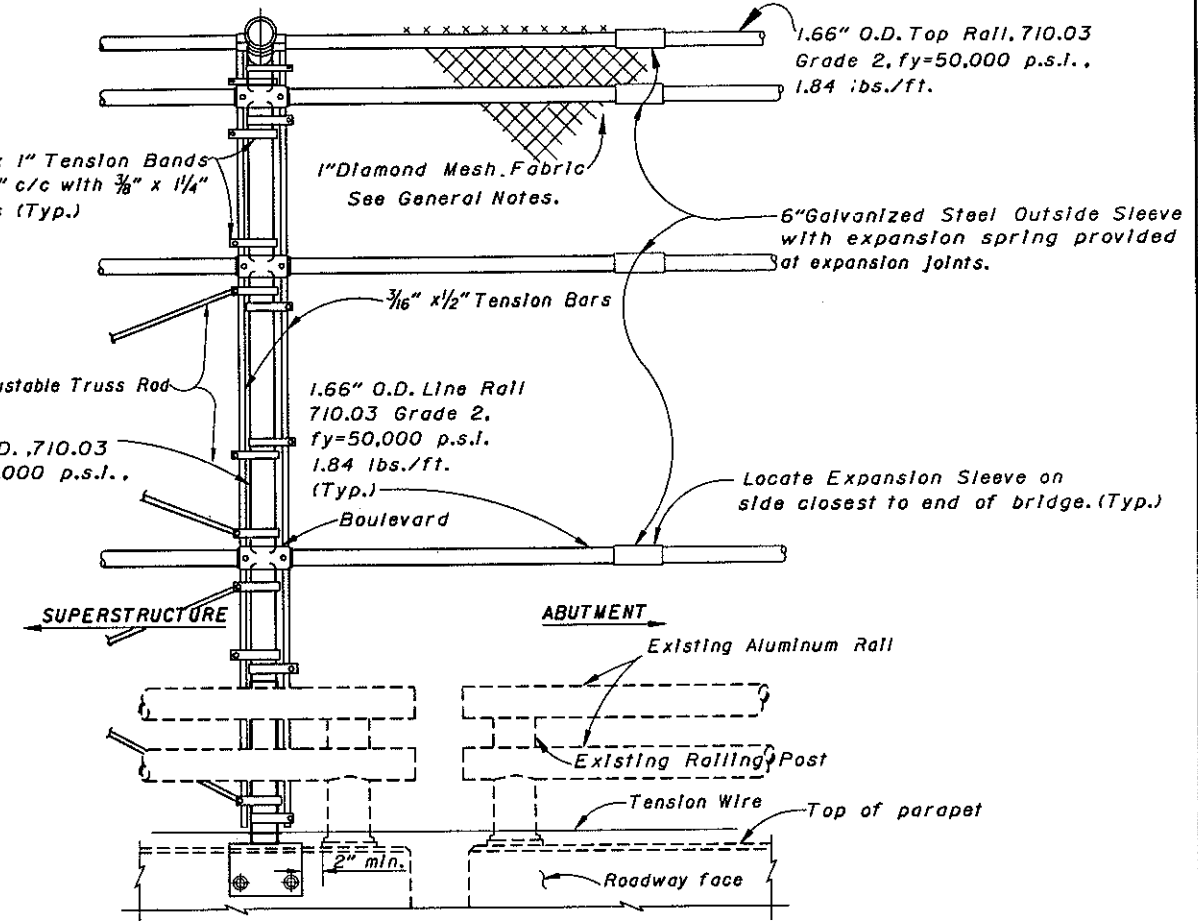


INSIDE ELEVATION~12'-0" CURVED VANDAL PROTECTION FENCE



INSIDE ELEVATION~8'-0" STRAIGHT VANDAL PROTECTION FENCE



**INSIDE ELEVATION~10'-0" CURVED FENCE AT EXPANSION JOINT
12'-0" CURVED FENCE~SIMILAR**

NOTES

- 8'-0" straight fence & 12'-0" curved fence shown;
- 6'-0" straight fence & 10'-0" curved fence are similar.
- Base plates shall clear parapet deflection joints by 2" minimum as shown.
- * Truss rods in end and pull panels shall not be installed unless required by the plans.

REVISIONS REV. E-1-92	STATE OF OHIO DEPARTMENT OF TRANSPORTATION BUREAU OF BRIDGES AND STRUCTURAL DESIGN			
STANDARD VANDAL PROTECTION FENCE ELEVATIONS AND DETAILS				
APPROVED: DATE: 19-26-90	ENGINEER OF BRIDGES			DRAWING NO. VPF-1-90
PREPARED JCR	DRAWN GFJ	CHECKED RLD	REVIEWED WTF	SHEET NO. 5 OF 6 SHEETS