

Deduct 20'-0" from concrete barrier; All costs for concrete barrier and inlet are included in CMS 611

**NOTES**

**GENERAL:** For details of Single Slope Concrete Barriers, see SCD RM-4.3.

**WALLS:** The walls between the bottom slab and the upper permissible construction joint may be built of brick, concrete, concrete block, or cast-in-place concrete, 8" nominal thickness for depths of 12" or less. Precast walls have a minimum thickness of 6" and are reinforced sufficiently to permit shipping and handling without damage. The unit above the permissible construction joint may be precast or cast-in-place.

**CONCRETE:** Provide 4000 psi compressive strength concrete for cast-in-place structures. All precast concrete must meet the requirements of CMS 706.13. Mark the inlet number on the structure. Seal the exposed concrete surfaces of the barrier per Item 512 when specified in the plans.

**REINFORCING STEEL:** Provide epoxy coated reinforcing steel in accordance with CMS 509.09.

**FOOTING JOINTS:** Provide a sealed joint with the vertical walls between the barrier footing and a concrete pavement or concrete base as detailed on SCD RM-4.3.

**CASTINGS:** The minimum weight of frame and cover is 540 lbs. See Sheet 2 for casting details.

Lighter weight frames and grates that meet the requirements of CMS 711.14 may also be provided. Grate openings and dimensions may not differ from those shown unless otherwise shown in the plans.

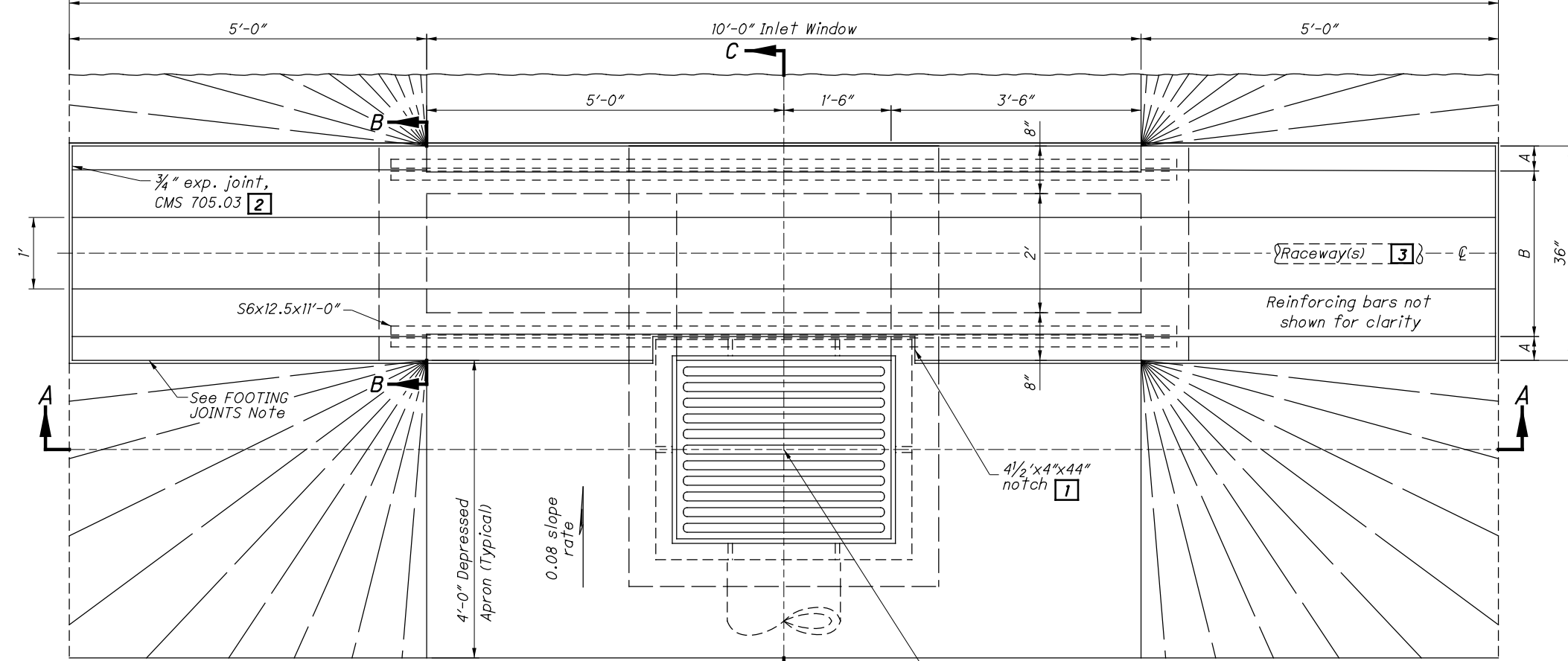
**STEPS:** Provide steps according to SCD MH-1

**INLETS OVER 12 FEET IN DEPTH:** Provide precast or cast-in-place concrete for inlets over 12 feet in depth. Reinforce with #4 bars on 12" centers both vertically and horizontally with 2" clearance from the inside wall face.

**OPENINGS:** Ensure pipe openings are the outside diameter of the pipe being supplied plus 2" when fabricated or field cut. Fill any voids per C&MS 611.

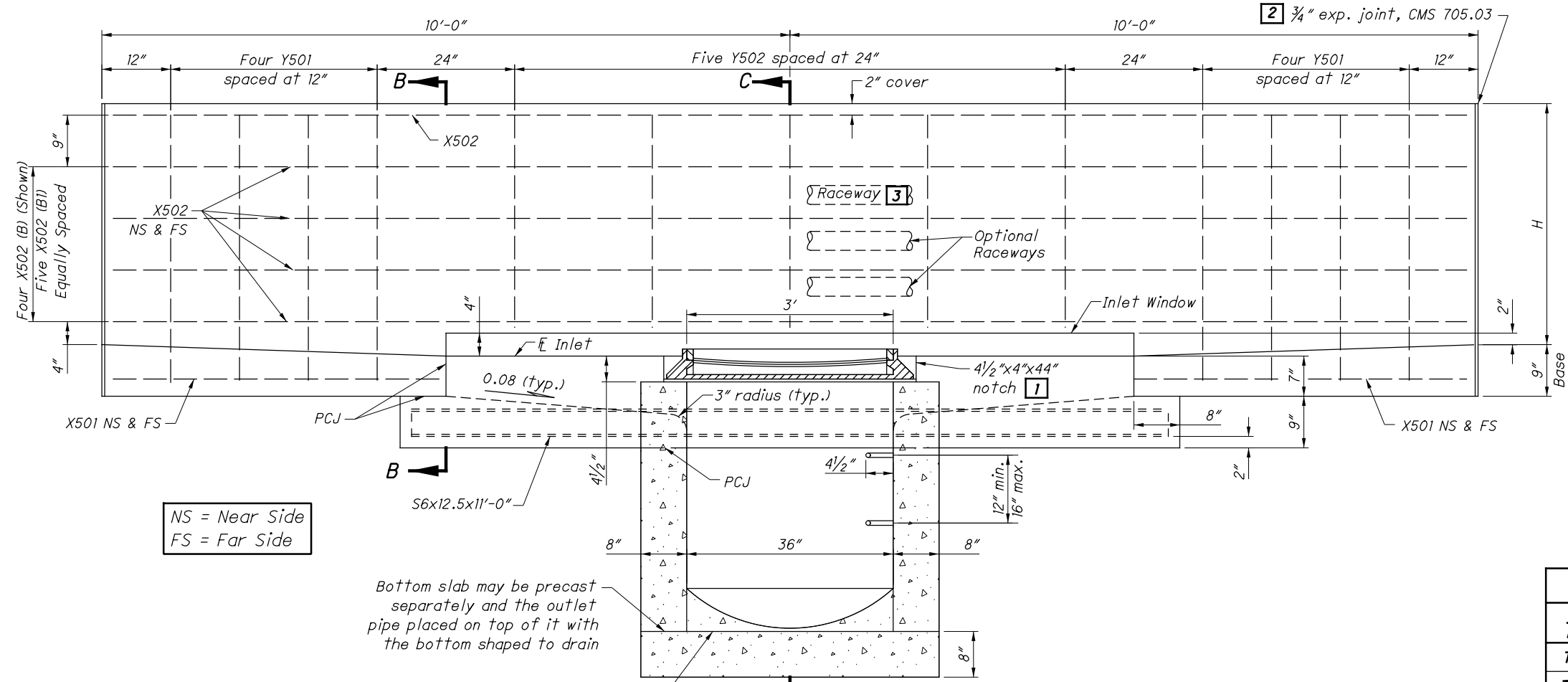
**PCJ:** Permissible construction joint

**PAYMENT:** Payment will be made at the unit price bid per Each for Item 611 - Inlet, No. 3 for Single Slope Barrier, Type (B or BI) and includes all materials, reinforcing steel, castings, raceways, wiring and labor required to construct the inlet as shown. Sealing of exposed concrete and sealing of the barrier will be paid for under Item 512 when specified in the plans.



**PLAN VIEW**

Reference Station and Offset is midpoint of barrier inlet



**SECTION A-A**

NS = Near Side  
FS = Far Side

Bottom slab may be precast separately and the outlet pipe placed on top of it with the bottom shaped to drain

**LEGEND**

- 1 After casting is placed, fill notch with 4000 psi compressive strength concrete.
- 2 Provide a 1/2" minimum exp. joint in concrete pavement or concrete shoulders.
- 3 4" electrical raceway. See Sheet 2 for RACEWAY PLACEMENT Details.

**STANDARD INLET TYPES**

INLET No. 3	H	A	B	C	D
Type B	42"	4"	28"	4 3/8"	27 1/4"
Type BI	57"	1 1/8"	33 3/4"	1 1/2"	33"

STATE OF OHIO DEPARTMENT OF TRANSPORTATION HYDRAULIC ENGINEER  
Jeffery E. Syar

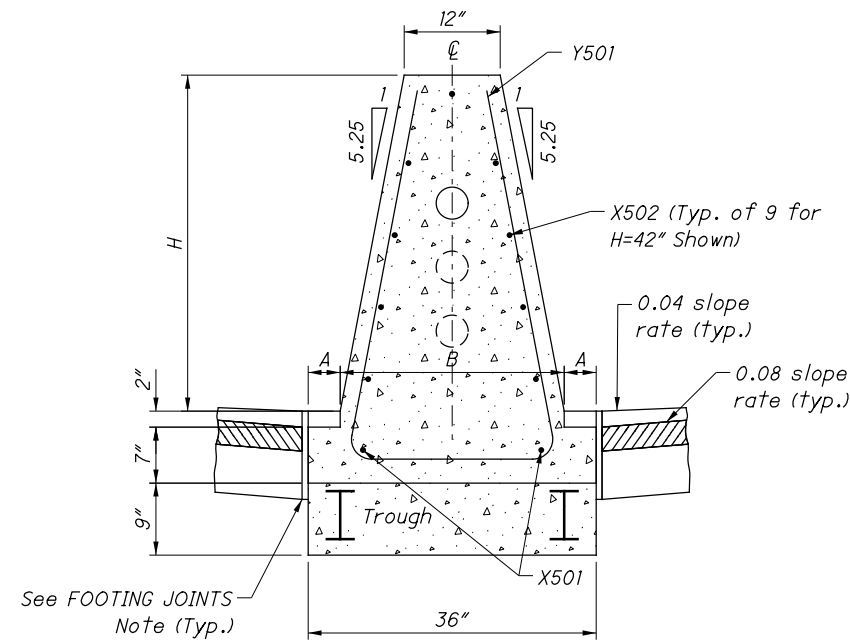
REVISIONS  
10-21-11  
7-20-12  
1-18-13  
1-17-14  
1-16-15  
1-15-16  
7-16-21

ROADWAY HYDRAULIC ENGINEER  
M. Cozzoli

OFFICE OF HYDRAULICS ENGINEERING

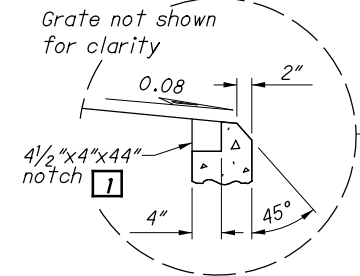
STANDARD HYDRAULIC CONSTRUCTION DRAWING  
INLET No. 3 FOR SINGLE SLOPE BARRIER, TYPES B, BI

DRAWING  
I-3B, 3B1

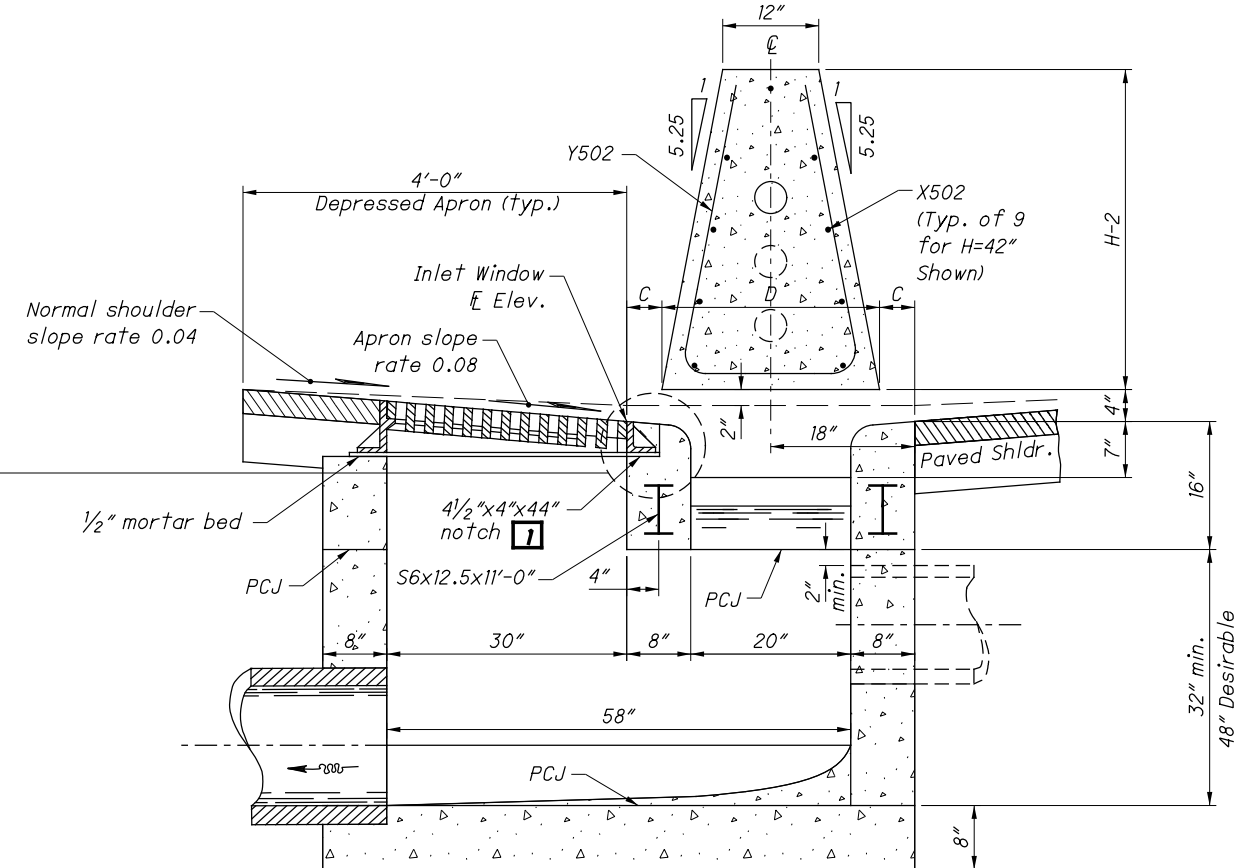


**SECTION B-B**  
See Sheet 1

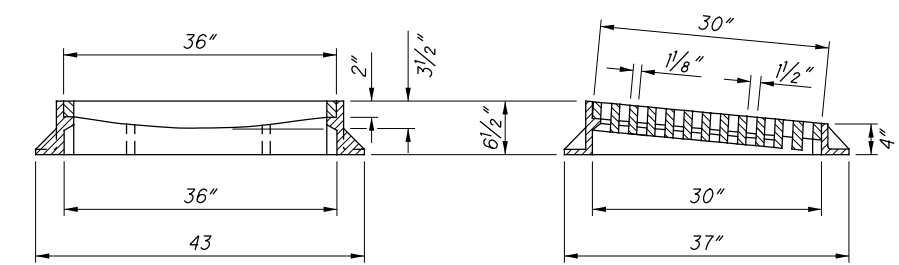
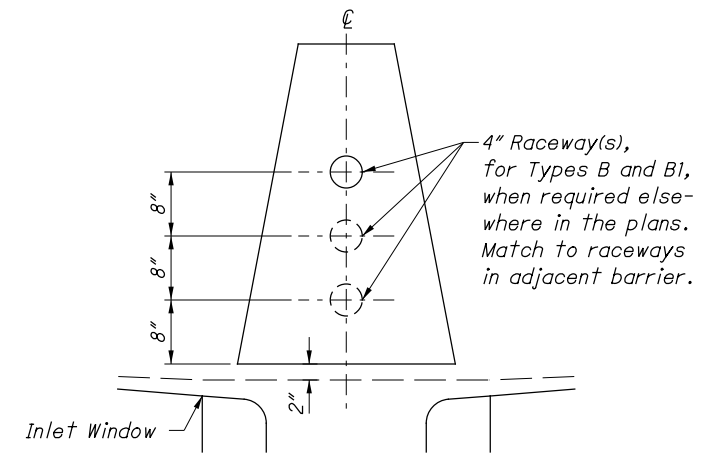
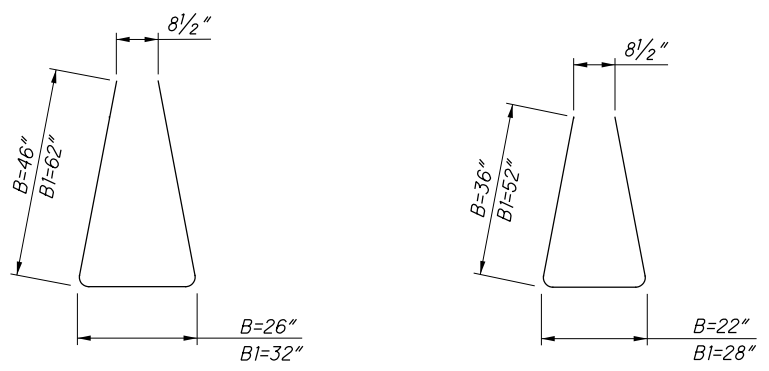
See FOOTING JOINTS Note (Typ.)



**ALTERNATE SPILLWAY DETAIL**



**SECTION C-C**  
See Sheet 1



**CASTING DETAILS**

STEEL LIST (For Estimating Purposes Only)										
INLET NO. 3	X501		X502		Y501		Y502		S6x12.5	
	Straight		Straight		Bent		Bent			
	No.	Length	No.	Length	No.	Length	No.	Length	No.	Length
Type B	4	4'-8"	9	19'-8"	8	9'-9"	5	7'-9"	2	11'-0"
Type B1	4	4'-8"	11	19'-8"	8	12'-9"	5	10'-9"	2	11'-0"

For Standard Inlet Types, NOTES, LEGEND, Plan and Section A-A, see Sheet 1.