

PICTORIAL VIEW

NOTES

GENERAL: For details of Single Slope Concrete Barriers, see SCD RM-4.3.

WALLS: The walls between the bottom slab and the upper permissible construction joint may be built of brick, concrete block or cast-in-place concrete, 8" nominal thickness for depths of 12' or less. Precast walls have a minimum thickness of 6" and are reinforced sufficiently to permit shipping and handling without damage.

CONCRETE: Provide 4000 psi compressive strength concrete when cast-in-place. When precast, provide concrete that meets the requirements of CMS 706.13. Mark the Inlet number on the structure. Seal the exposed concrete surfaces of the barrier per Item 512 when specified in the plans.

REINFORCING STEEL: Provide epoxy coated reinforcing steel in accordance with CMS 509.09.

FOOTING JOINTS: Provide a sealed joint with the vertical walls between the barrier footing and a concrete pavement or concrete base as detailed on SCD RM-4.3.

STEPS: Provide steps in accordance with SCD MH-1.

INLETS OVER 12 FEET IN DEPTH: Precast or cast-in-place inlets over 12 feet in depth. Reinforce with #5 bars on 12" centers both vertically and horizontally, with 2" clearance from the inside wall face.

OPENINGS: Ensure pipe openings are the outside diameter of the pipe being supplied plus 2" when fabricated or field cut. Fill any voids per C&MS 611.

ACCESS DOOR: Provide galvanized steel for the door, frame and all inserts. Provide stainless steel hex head bolts.

DEPRESSED APRON: Slope the aprons on both sides of the inlet toward windows and fill with 4000 psi compressive strength concrete. On superelevated sections, slope the aprons as shown in Section C-C.

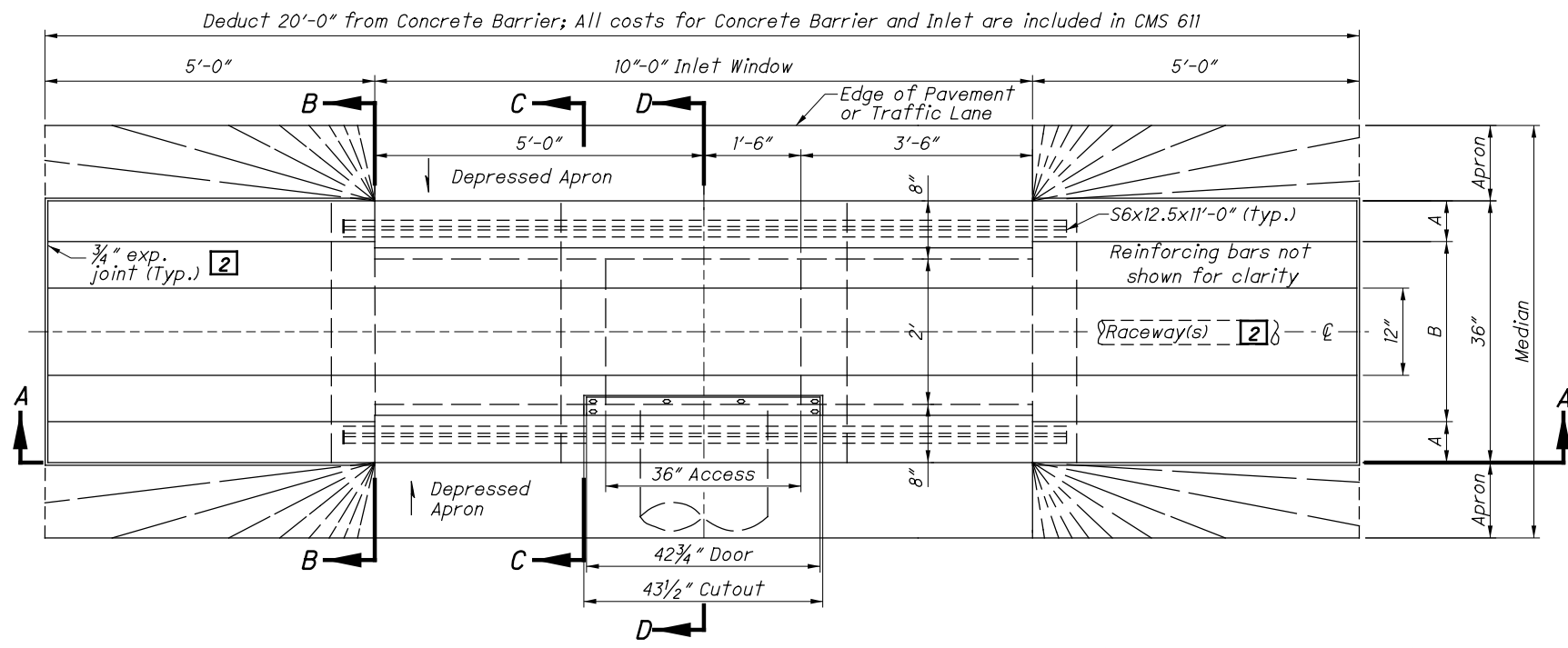
PCJ: Permissible construction joint.

PAYMENT: Payment will be made at the unit price bid per Each for Item 611 - Inlet, No. 4 for Single Slope Barrier, Type ____ (B or B1) and includes all materials, reinforcing steel, inlets, raceways, wiring, labor and incidentals required to construct the inlet, as shown. Sealing of exposed concrete and sealing of the barrier will be paid for under Item 512 when specified in the plans.

LEGEND

- 1 Provide a 1 1/2" minimum exp. joint in concrete pavement or concrete shoulders.
- 2 4" electrical raceway, if required elsewhere in the plans. See RACEWAY PLACEMENT Details on Sheet 3.

STANDARD INLET TYPES					
INLET NO. 3	H	A	B	C	D
Type B	42"	4"	28"	4 3/8"	27 1/4"
Type B1	57"	1 1/8"	33 3/4"	1 1/2"	33"

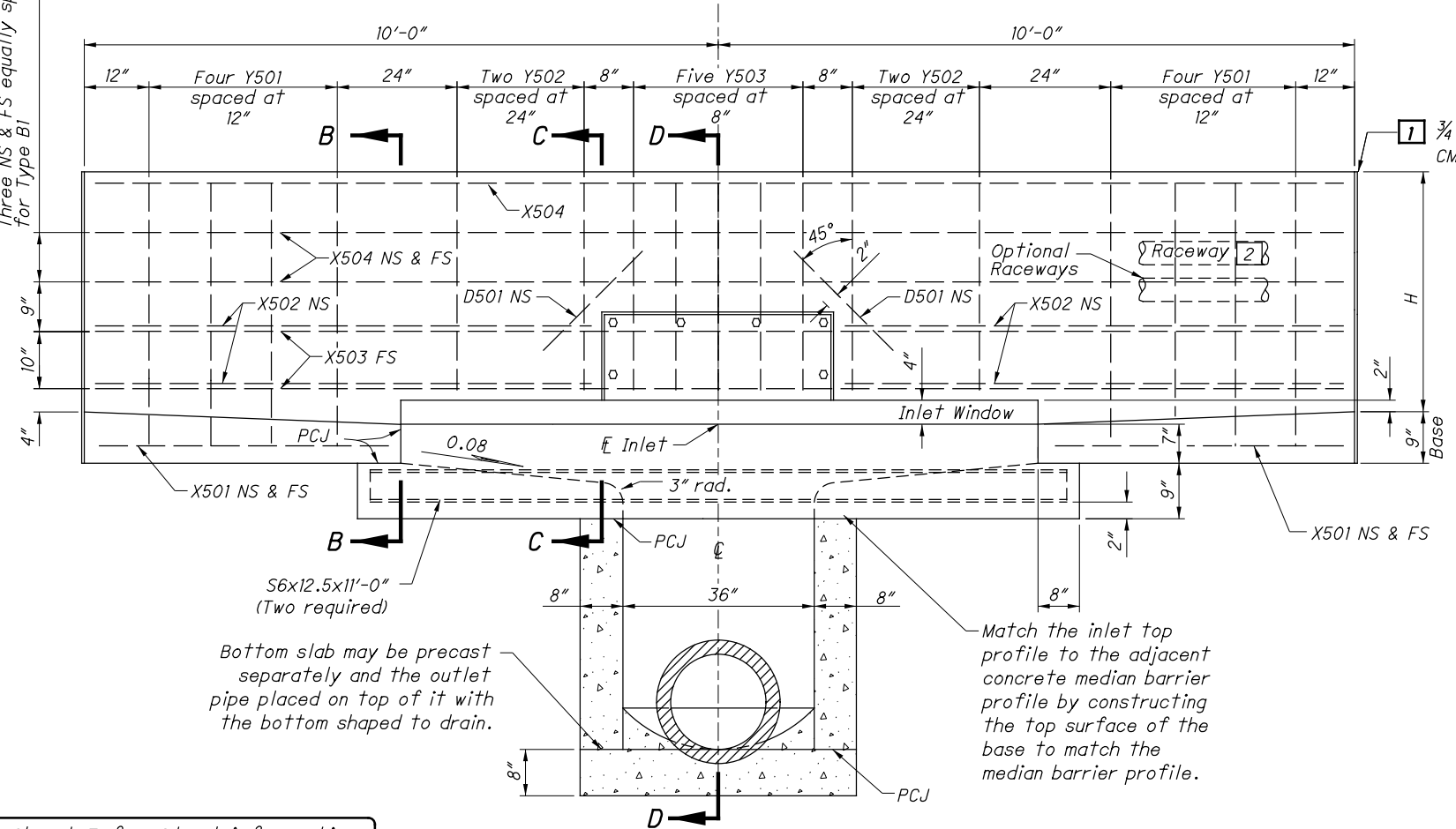


PLAN VIEW
NOT TO SCALE

For Dimensions H, A and B,
see Standard Inlet Types
on Sheet 1.

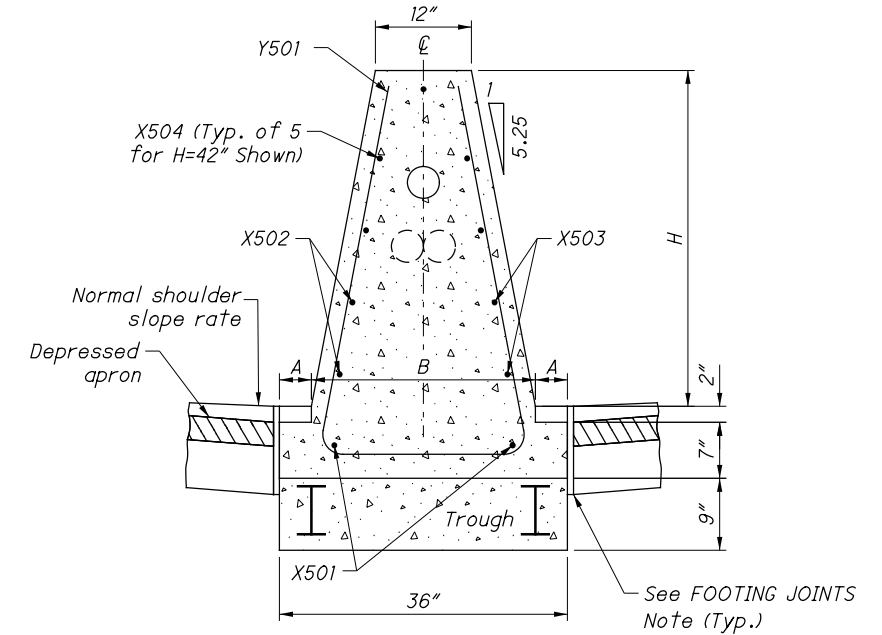
NS = Near Side
FS = Far Side

X504
Two NS & FS equally spaced
for Type B (shown), or
Three NS & FS equally spaced
for Type B1

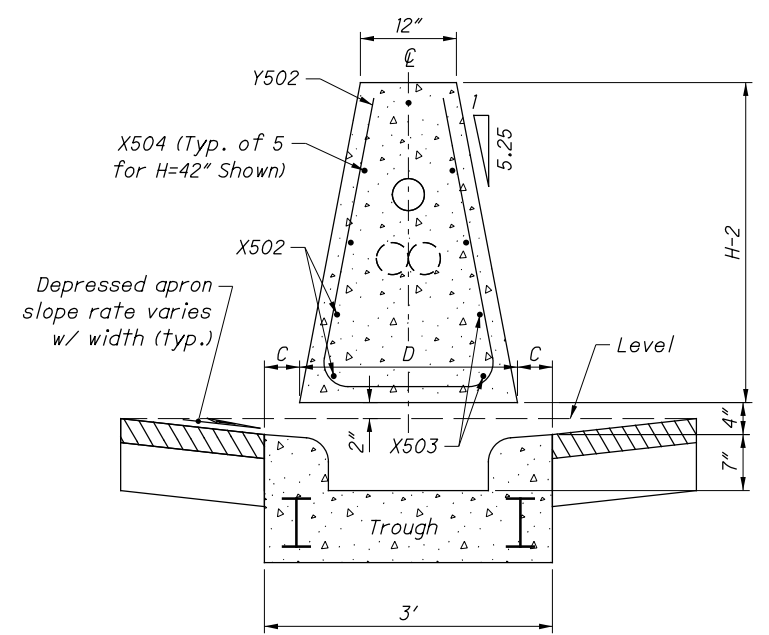


SECTION A-A
NOT TO SCALE

See Sheet 3 for Steel information,
Bending Diagrams, and Access
Door details.

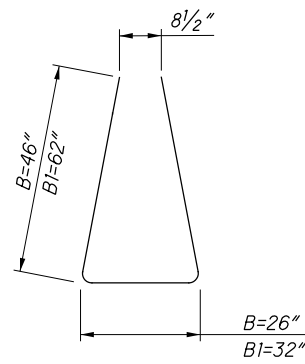


SECTION B-B

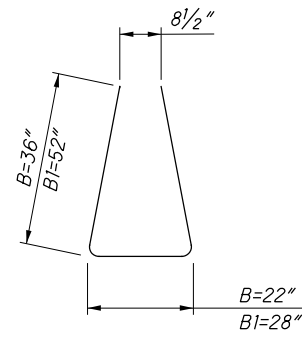


SECTION C-C

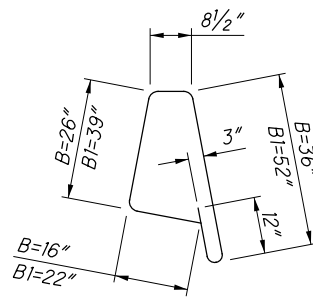
STATE OF OHIO DEPARTMENT OF TRANSPORTATION HYDRAULIC ENGINEER	Jeffery E. Syar
REVISIONS	
7-15-05	
10-21-11	
7-20-12	
1-18-13	
1-17-14	
1-15-16	
7-16-21	
ROADWAY HYDRAULIC ENGINEER	M. Cozzoli
OFFICE OF HYDRAULICS ENGINEERING	
STANDARD HYDRAULIC CONSTRUCTION DRAWING	INLET No. 4 FOR SINGLE SLOPE BARRIER, TYPES B, B1
SCD NUMBER	1-4B, 4B1
	2 / 3



Y501

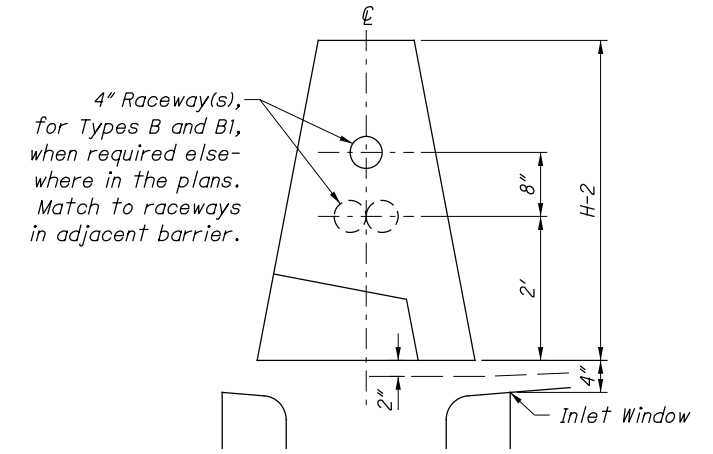


Y502



Y503

BENDING DIAGRAMS

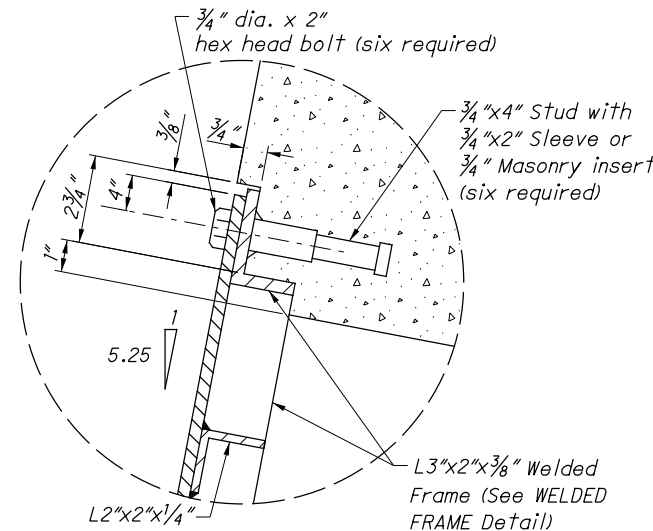


4" Raceway(s),
for Types B and BI,
when required else-
where in the plans.
Match to raceways
in adjacent barrier.

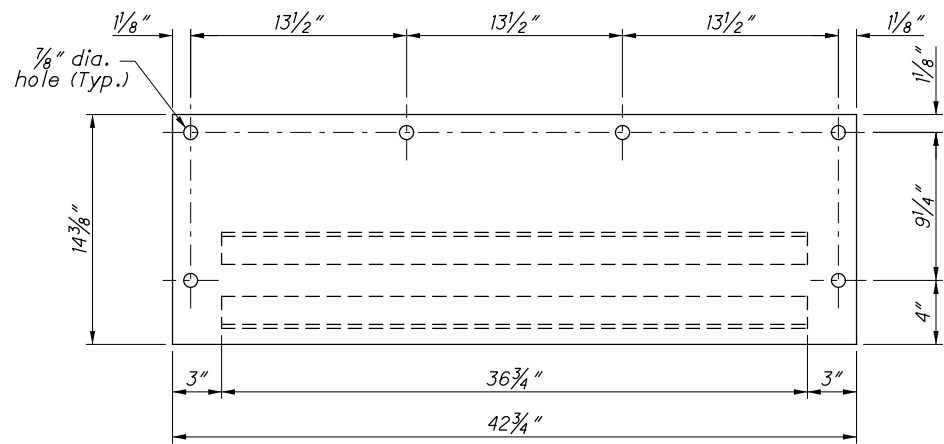
RACEWAY PLACEMENT
(Over Access Cutout)

STEEL LIST (For Estimating Purposes Only)

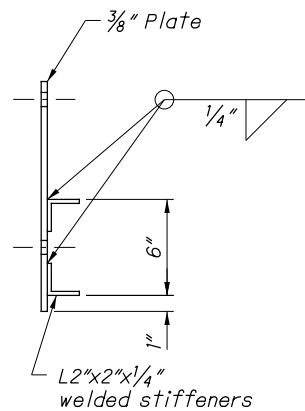
INLET NO. 4	X501	X502	X503	X504	Y501	Y502	Y503	D501	S6x12.5
	#5 bar	#5 bar	#5 bar	#5 bar	#5 bar	#5 bar	#5 bar	#5 bar	
	Straight	Straight	Straight	Straight	Bent	Bent	Straight	Straight	
	No. Length	No. Length	No. Length	No. Length	No. Length	No. Length	No. Length	No. Length	No. Length
Type B	4 4'-8"	4 7'-10"	2 19'-8"	5 19'-8"	8 9'-9"	4 7'-9"	5 7'-6"	2 2'-0"	2 11'-0"
Type BI	4 4'-8"	4 7'-10"	2 19'-8"	7 19'-8"	8 12'-9"	4 10'-9"	5 10'-5"	2 2'-0"	2 11'-0"



DETAIL A

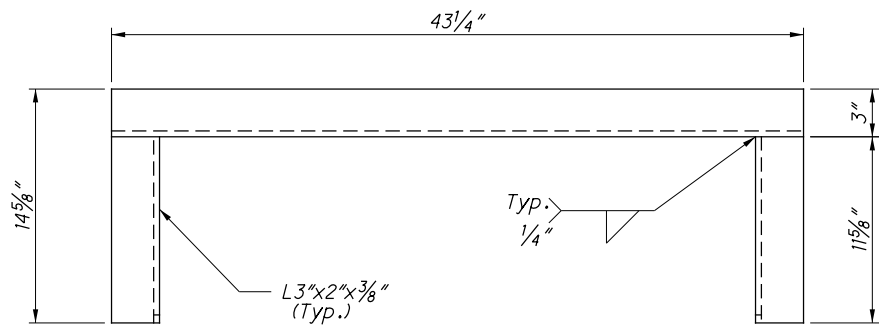


FRONT

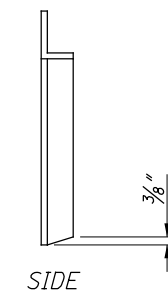


SIDE

ACCESS DOOR DETAILS



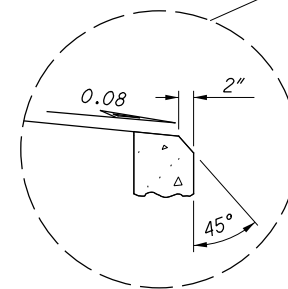
FRONT



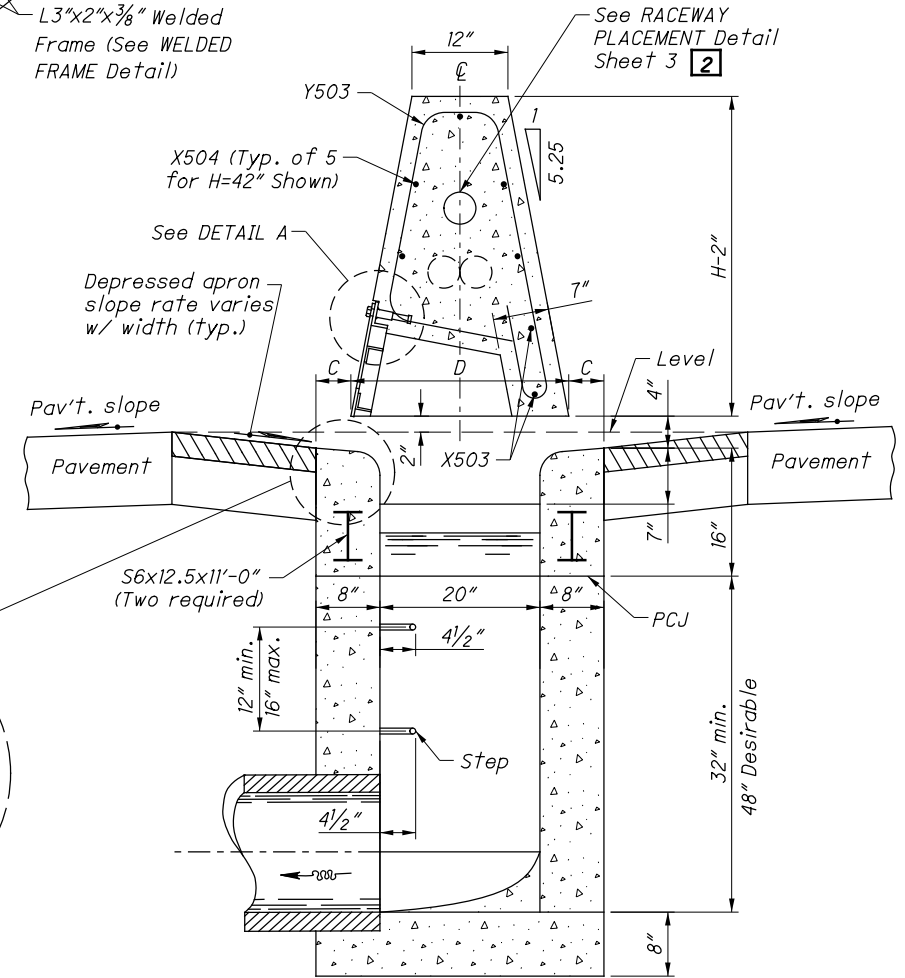
SIDE

WELDED FRAME DETAIL

See Sheet 1 for NOTES and LEGEND. See Sheet 2 for Plan, Elevation, and Section Views.



ALTERNATE SPILLWAY DETAIL



SECTION D-D
See Sheet 2