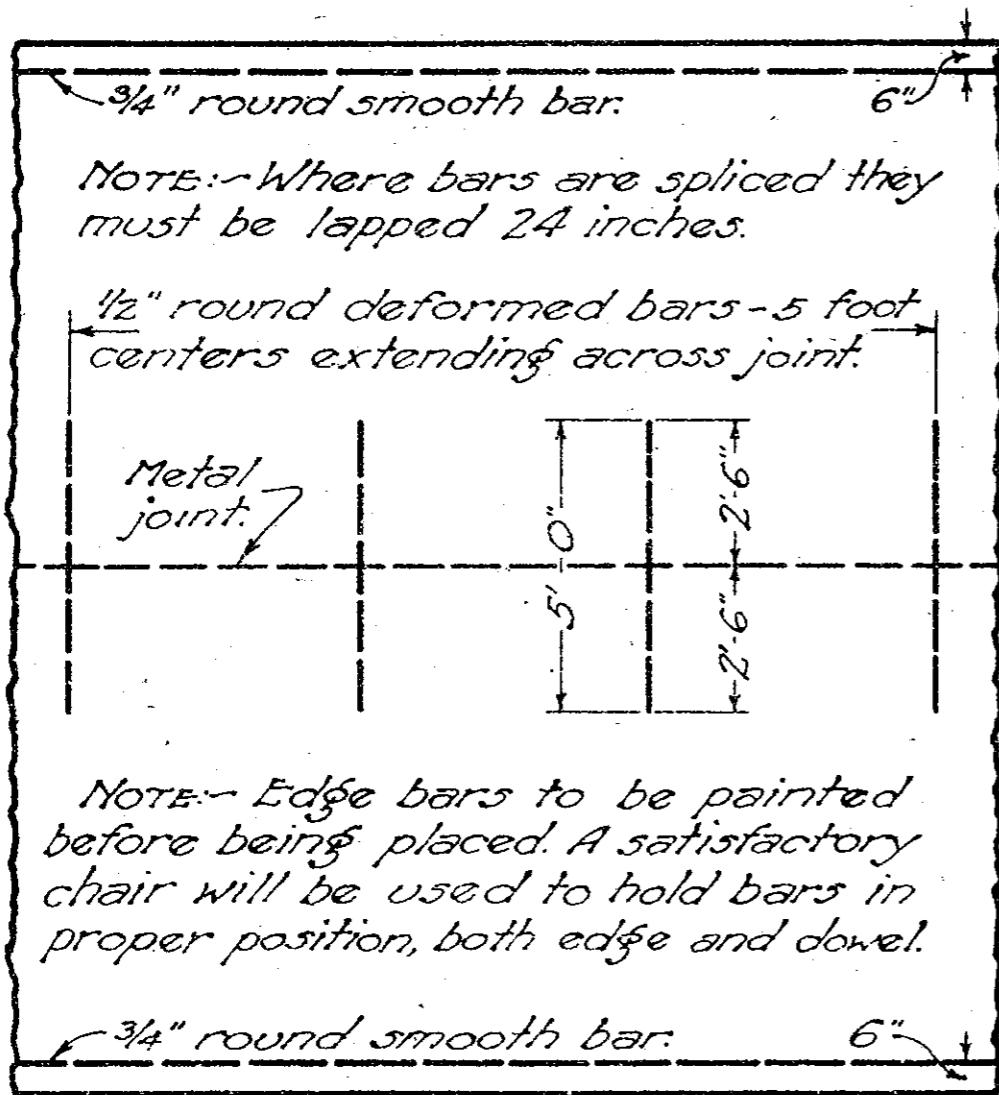
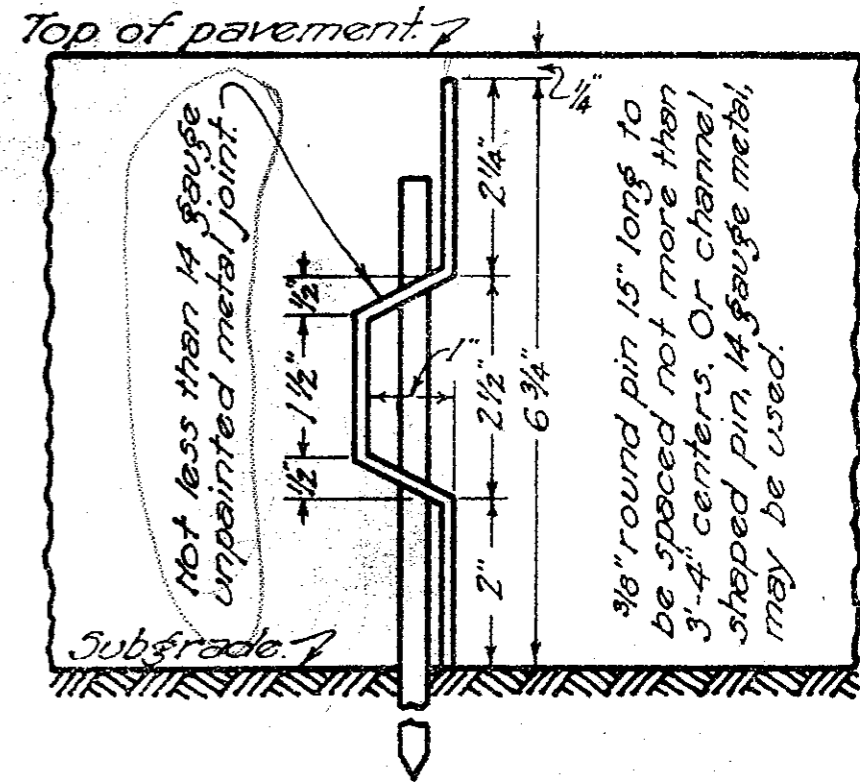


CROSS-SECTION



PLAN

NOTE:- This joint is designed for 7" pavement. When a greater or less thickness is used the joint shall be proportionally designed to extend within 1/4" of the surface of the pavement. (Other deformations may be used if approved by the engineer.)



DETAIL OF JOINT

BUREAU OF CONSTRUCTION
OHIO
DEPARTMENT OF HIGHWAYS

REVISED
8-12-30

**CONCRETE PAVEMENT
WITH METAL CENTERJOINT**

STANDARD
CONSTRUCTION DRAWING **100**
JAN. 2, 1930

APPROVED: *HPC* CHIEF ENGR. CONST.